

Pelvic Floor Dialogues

So I pee a little when I laugh. That's normal right?

How has my body changed "down there" since I had my baby?

Everyone talks about Kegels. Do they really work? How much is enough?

11.2015 | ISSUE 13

FOLLOW US: www.facebook.com/voicesforpfd [@voicesforpfd](https://twitter.com/voicesforpfd)

PFD Awareness

In this issue

- Bladder Health Week
- PFD Risk Factors Quiz
- Do Nuns Get UI, Too?
- What's Your Incontinence Nutrition Knowledge?
- FDA Approves New Non-prescription Device
- You May Need More than Fiber and Fluids

Bladder Health Week—November 9-13



Go ahead, do it. Do it now. Register today for a "Break Free from PFDs" event! Together with AUGS, the PFD Alliance and national health institutions, local hosts are offering special educational events across the country during Bladder Health Week, November 9-13, 2015.

Register today!

- Find a 2015 Bladder Health Week event in your area on www.voicesforpfd.org/bladderhealthweek
- Learn about prolapse, the dropping of the pelvic organs caused by the loss of normal support of the vagina.
- Gather info on incontinence, the unintentional leakage of urine or feces.
- Up your know-how on pelvic floor disorders, a group of conditions that affect the pelvic floor.
- Build confidence about discussing pelvic health issues with your doctor.

American Urogynecologic Society
1100 Wayne Ave, Suite 825| Silver Spring, MD 20910

P: 301 273 0570 | F: 301 273 0778 | info@augus.org
Accredited © 2015 American Urogynecologic Society

 **AUGS**
Advancing Female Pelvic Medicine and Reconstructive Surgery

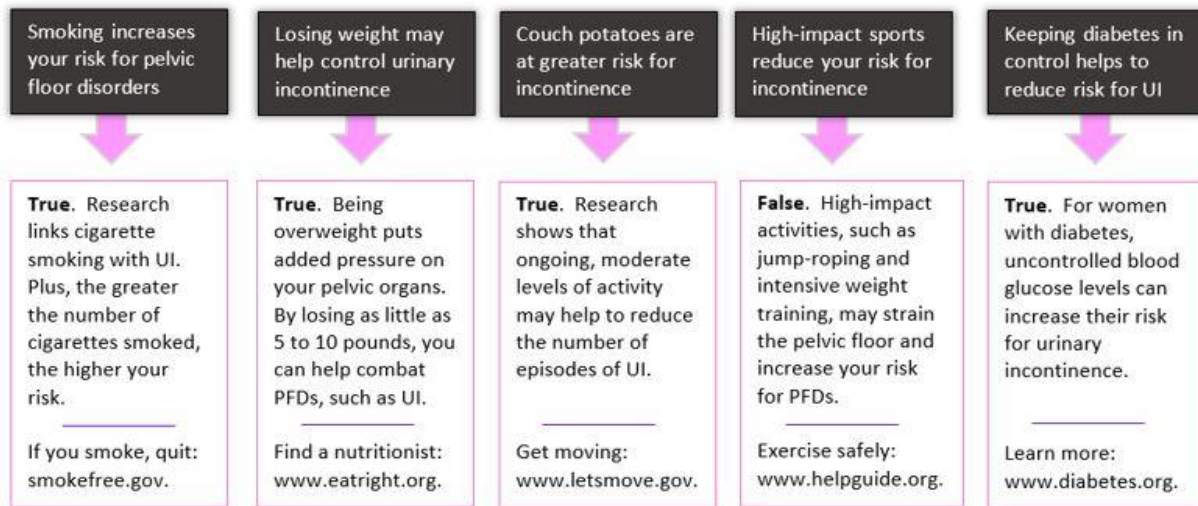
Voices for **PFD**

Check out these helpful resources available online at www.voicesforpfd.org:

- Watch—the 2014 Bladder Health Week webinar with Drs. Amy Park and Cheryl Iglesia.
- Download—a factsheet providing an overview of pelvic floor disorders.
- Read—five tips to start a conversation and Break Free From PFDs!

PFD Risk Factors Quiz—True or False

How aware are you about your risk for pelvic floor disorders? Test your knowledge about lifestyle choices that may reduce your risk.



Do Nuns Get UI, Too?

For many women, childbirth prompts the onset of urinary incontinence. So, what about women who do not have kids? Are they at a lower risk for developing UI? To answer that question, a group of researchers from the University of Rochester looked at the medical histories of 149 nuns. The average age of these sisters was 68 years. Nearly all of them were postmenopausal.

Indeed, many of the nuns had UI:

- **33%** had stress urinary incontinence (SUI), leakage of urine with physical activity or motions such as laughing, coughing, lifting, or with exercise.
- **24%** had urinary urge incontinence (UUI), leakage of urine accompanied by a sudden sense of needing to get to the bathroom to urinate.
- **5%** had mixed urinary incontinence (MUI), a condition where both stress and urge urinary incontinence exist.

Thus, even though they did not experience childbirth, this group of celibate women also struggled with UI. In fact, the number with incontinence was similar to a group of their peers who had given birth!

What's Your Incontinence Nutrition Knowledge?

In four separate studies, researchers in the US and United Kingdom asked women about foods and beverages that appear to trigger urinary incontinence symptoms. Here's what women on both sides of the Atlantic said!

POTENTIAL TRIGGER FOOD OR DRINK	
Stress Urinary Incontinence (SUI)	<ul style="list-style-type: none"> • CARBONATED DRINKS • CAFFEINE (TEA AND SODA) • HIGH INTAKES OF SATURATED FATS
Urge Urinary Incontinence (UUI) a.k.a. Overactive Bladder (OAB)	<ul style="list-style-type: none"> • ALCOHOL • CAFFEINE (COFFEE, TEA, COLA) • VITAMIN C SUPPLEMENTS (IF EATING LOTS OF FOODS HIGH IN VITAMIN C) • CALCIUM SUPPLEMENTS (IF EATING LOTS OF FOODS HIGH IN CALCIUM) • EXCESSIVE FLUID INTAKE
Nocturia (waking up twice or more at night to pee)	<ul style="list-style-type: none"> • ALCOHOL • CAFFEINE • NIGHT TIME FLUIDS, ESPECIALLY IF YOU ALSO HAVE SEVERE UUI • HIGH PROTEIN DIETS

The research on diet and UI is very limited. There is still much research needed in this field. At this time, we do not have strong evidence on the relationship between foods and drinks and UI symptoms. So, yes, here's our disclaimer: Exactly which foods or beverages and how much of these items may affect UI symptoms, may vary from woman to woman.

FDA Approves New Non-prescription Device to Help Ease UI

It's a tampon. It's a pessary. It's an Impressa! The FDA recently approved a new device to help women control UI symptoms. Like a tampon, a woman inserts the Impressa into her vagina with an applicator and it has a string for easy removal. And, like a pessary, the Impressa supports the bladder and applies pressure on the urethra. The Impressa is a disposable device worn for up to eight hours. It has a flexible core with support poles and a sling.

Constipation—When You May Need More than Fiber and Fluids Approves New Non-prescription Device to Help Ease UI

Increase fluids and fiber. That's what you need to do to relieve constipation, difficulty passing bowel movements or the need to strain for bowel movements—right? Actually, for women with PFDs, these strategies may be helpful, but may not be enough.

Women who take pain medicines, such as opioids, and have a PFD and irregularity, may need constipation medicines, too. Plus, some women have a type of constipation called a motility problem. They may also need medicine to promote regularity. Laxatives are the drugs used for constipation. Your doctor may prescribe a laxative or suggest buying a product at a local drug store.

And, don't be surprised if your doctor recommends you see a physical therapist (PT). If you have abnormal pelvic floor tone, physical therapy can be helpful. PTs use pelvic floor massage techniques to improve the tone. This can also relieve constipation.

The Rest of the Story

- Buchsbaum G, Chin M, Glants C, et al. Prevalence of Urinary Incontinence and Associated Risk Factors in a Cohort of Nuns. *Obstetrics & Gynecology* 2002 Aug;100(2):226-229.
- Dallosso HLM, McGrother CW, Matthews RJ, et al. The association of diet and other lifestyle factors with overactive bladder and stress incontinence: a longitudinal study in women. *BJU Int* 2003;92(1):69-77.
- Gleason JL, Richter HE, Redden DT, et al. Caffeine and urinary incontinence in US women. *Int Urogynecol J* 2013 Feb 24(2); 295-302.
- Leung L, Riutta T, Kotecha J, et al. Chronic constipation: an evidence-based review. *J Am Board Fam Med* 2011 Jul-Aug;24(4):436-451.
- Maserejian NN, Giovannucci EL, McVary KT, et al. Dietary macronutrient and energy intake and urinary incontinence in women. *Am J Epidemiol* 2010 May15;171(10):1116-1125.
- Maserejian NN, Wager CG, Giovannucci EL, et al. Intake of caffeinated, carbonated, or citrus beverage types and development of urinary tract symptoms in men and women. *Am J Epidemiol* 2013;177(12):1399-1410.
- Müller-Lissner S, Kamm M, Scarpignato C, Wald A. Myths and misconceptions about chronic constipation. *Am J Gastroenterol* 2005;100:232-242.
- Overson E, Allen A, Allen S, et al. Severity of incontinence symptoms in smokers and the role of tobacco exposure and respiratory symptoms [poster]. HealthPartners in Bloomington. March 8.
- Unger CA, Goldman HB, Jelovsek JE. Fecal incontinence: the role of the urologist. *Curr Urol Rep.* 2014 Mar;15(3):388.
- Wang R, Lefevre R, Hacker MR, Golen TH. Diabetes, Glycemic Control, and Urinary Incontinence in Women. *Female Pelvic Med Reconstr Surg.* 2015 Sep-Oct;21(5):293-7.
- Wing RR, Creasman JM, West SM, et al. Improving urinary incontinence in overweight and obese women through modest weight loss. *Obstet Gynecol* 2010 Aug;116(2 Pt 1):284-292. *Curr Urol Rep.* 2014 Mar;15(3):388.
- Yi J. Female Triathletes at risk for pelvic floor disorders. AUGS/IUGA 2014 Scientific Meeting. Goldstick O, Constantini N. Urinary incontinence in physically active women and female athletes. *Br J Sports Med.* 2014 Feb;48(4):296-8.
- Unger CA, Goldman HB, Jelovsek JE. Fecal incontinence: the role of the urologist. *Curr Urol Rep.* 2014 Mar;15(3):388.