

Conference Program



PFDWEEK2016

COLORADO CONVENTION CENTER | DENVER, COLORADO

AUGS 37TH ANNUAL SCIENTIFIC MEETING **SEP 27 - OCT 1, 2016**





Proud to be a
Platinum Sponsor
for PFD WEEK 2016

Please join us for an Allergan-sponsored
Industry Expert Theater Lunch Program

Bringing Nocturia Into the Forefront: Heightening Awareness of a Common Condition

Thursday, September 29th
1:15pm – 2:15pm

Room 107/109
Colorado Convention Center

Please visit us at the Allergan Booth
Meet the Experts

Weds 9/28	5:30 PM - 6:30 PM	Rebecca McCrery, MD
Weds 9/28	6:30 PM - 7:30 PM	Michael Kennelly, MD
Thurs 9/29	10:00 AM - 10:30 AM	Vincent Lucente, MD, MBA
Thurs 9/29	5:00 PM - 6:00 PM	Michael Kennelly, MD
Fri 9/30	9:30 AM - 10:00 AM	Vincent Lucente, MD, MBA
Fri 9/30	1:00 PM - 2:00 PM	Rebecca McCrery, MD

***We wish to sincerely thank the Urogynecologist
community for the continued support***

PFD WEEK PROGRAM COMMITTEE

David "Ike" Rahn, MD
Chair

Cheryl B. Iglesia, MD
Vice Chair

Patrick J. Culligan, MD
Board Liaison

Peter Rosenblatt, MD
Workshop Chair

Eric Sokol, MD
Workshop Vice Chair

Members

Jan Baker, MS, APRN
Kathleen Connell, MD
Elizabeth Geller, MD
Jonathan Gleason, MD
John Occhino, MD, MS
Sally O'Neill, PhD
Minita Patel, MD
Heather van Raalte, MD

ABSTRACT REVIEW COMMITTEE

Marianna Alperin, MD, MS
Mallika Anand, MD
Matthew Barker, MD
Nina Bhatia, MD
Sarah Collins, MD
Sybil Dessie, MD
Alexis Dieter, MD
Gena Dunivan, MD
Keisha Dyer, MD
Eman Elkadry, MD
Elizabeth Evans, MD
Matthew Fraser, PhD
Betsy Greenleaf, MD
Cara Grimes, MD
Marsha Guess, MD
Barbara Henley, MD
Lekha Hota, MD
Padma Kandadai, MD
Amie Kawasaki, MD
Michael Kennelly, MD
Felicia Lane, MD
Joseph Maccarone, MD
Shazia Malik, MD
Gina Northington, MD, PhD
Amy O'Boyle, MD
Amy Park, MD
Lee Richter, MD
Beri Ridgeway, MD
Megan Schimpf, MD
Ruchira Singh, MD
Carmen Sultana, MD
Amanda White, MD
Ann Word, MD

PFD WEEK 2016

Dear Colleagues,

Welcome to Pelvic Floor Disorders (PFD) Week 2016, AUGS 37th Annual Scientific Meeting! PFD Week is the go-to meeting for healthcare professionals interested in or actively practicing Female Pelvic Medicine and Reconstructive Surgery. We are excited to kickoff meeting festivities in Denver, Colorado!

The 2016 Program Committee has created a scientific schedule filled with two days of clinically-focused workshops and two and a half days of presentations, highlighting groundbreaking research and advancements in technology. You will have the opportunity to connect with experts in the field as you access top-notch education in our scientific program.

13 VIDEOS

62 PAPERS

72 ORAL POSTERS

28 ROUNDTABLE DISCUSSIONS

3 LIVE SURGERY PROCEDURES

Remember to take some time to relax during PFD Week! Our networking events and dedicated Exhibit Hall times will allow you to connect with exhibitors and share lessons learned and best practices with industry peers. Friday night's AUGSOME: Taste of Denver block party is the perfect opportunity to have a fun night with your family and friends. We are excited to see the creativity during this year's karaoke!

I hope you enjoy your time at PFD Week 2016!



David "Ike" Rahn, MD



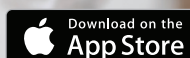
TABLE OF CONTENTS

Important Meeting Information	5	Meet the Experts Educational Roundtables.....	27
Continuing Education	7	Scientific Program.....	29-45
Networking Events	8	Industry Supported Education Sessions	51
Non-Educational Industry Supporters.....	11	Exhibit Hall Floor Plan.....	52
Schedule at-a-Glance.....	12-13	Exhibitor Listing	53
Concurrent Schedule at-a-Glance	14-19	Exhibitor Descriptions.....	54-58
General Sessions	21	Award Recipients	60
Special Interest Group Activities	23	AUGS Leadership	64-66
Workshop Schedule	24-25		
Fellows' Research Day	26		

AUGS NOW delivers valuable resources directly to your mobile device. Download AUGS NOW and stay connected with AUGS by utilizing the following features:

- **Question of the Day** – Test your knowledge with a daily FPMRS question
- **Risk Calculator** – Calculate the risk of de novo postoperative stress urinary incontinence after surgery for pelvic organ prolapse
- **News** – Read the latest articles from FPMRS News, the FPMRS Journal, and the AUGS President's Blog
- **Guidelines and Position Statements** – Review current clinical practice guidelines, committee opinions, and position statements
- **Events** – Learn more about upcoming AUGS events
- **Membership Directory** – Connect and network with colleagues
- **Career Center** – Find or post open positions in the field of urogynecology
- **Social Media** – Stay connected with AUGS on Facebook, Twitter, LinkedIn, and YouTube

Search for "AUGS NOW" in the Apple store to download to your Apple IOS iphone or ipad.



IMPORTANT MEETING INFORMATION

ATTENDEE SERVICES DESK HOURS

Tuesday, September 27

7:00 a.m. – 5:00 p.m.

Wednesday, September 28

7:00 a.m. – 6:00 p.m.

Thursday, September 29

6:15 a.m. – 5:00 p.m.

Friday, September 30

6:15 a.m. – 5:30 p.m.

Saturday, October 1

8:00 a.m. – 12:00 p.m.

SPEAKER READY ROOM

Room 101

AUGS provides a room for all speakers to review and submit their presentations before their session. To better serve you, this process must be completed at least three hours prior to your session.

Tuesday, September 27

6:30 a.m. – 6:30 p.m.

Wednesday, September 28

6:30 a.m. – 6:30 p.m.

Thursday, September 29

6:30 a.m. – 4:30 p.m.

Friday, September 30

6:30 a.m. – 6:00 p.m.

Saturday, October 1

7:30 a.m. – 10:00 a.m.

EXHIBIT HALL HOURS

Wednesday, September 28 | 5:30 p.m. – 7:30 p.m.

5:30 p.m. – 7:30 p.m.

Welcome Reception in Exhibit Hall

Thursday, September 29 | 10:30 a.m. – 6:00 p.m.

10:00 a.m. – 10:30 a.m.

Break in Exhibit Hall

12:45 p.m. – 2:30 p.m.

Lunch in Exhibit Hall

5:00 p.m. – 6:00 p.m.

Exhibit Hall Happy Hour

Friday, September 30 | 9:30 a.m. – 2:00 p.m.

9:30 a.m. – 10:00 a.m.

Break in Exhibit Hall

12:15 p.m. – 2:00 p.m.

Lunch in Exhibit Hall

MISSING: MR. POTATO HEAD



Nicescene / Shutterstock.com

Mr. Potato Head is missing and needs to find his way back to Providence, Rhode Island (home of Hasbro). Search for Mr. Potato Head in the Exhibit Hall and your reward could be free registration for PFD Week 2017 taking place in Providence, Rhode Island.

ENHANCE YOUR MEETING EXPERIENCE WITH THE PFD WEEK MOBILE APP

Connect with fellow attendees and access program details all through your mobile device. Search “AUGS PFD Week” in the Apple App Store or Google Play Store to download the app.

- Quickly reference meeting logistics including times and locations
- Search the meeting schedule and build your personal agenda
- Find your favorite speakers and view all the sessions he/she is presenting
- Access the 2016 exhibitor list and navigate the Exhibit Hall



Stop by Booth #101 to discover all that AUGS offers

**Grab a special treat at the Welcome Reception on
Wednesday, 5:30 p.m. – 7:30 p.m.!**

Join or Renew Your Membership, or Just Stop In to Learn More About:

- **NOW AVAILABLE!** The POP-Q Interactive Assessment Tool, formerly from Bard, has been updated and is now provided by AUGS
- **NEW!** Patient Fact Sheets and see other resources for your patients
- How you can participate in the PFD Registry
- **NEWLY DEVELOPED!** AUGS Urogyn Quality Registry (AQUIRE) – Your tool for PQRS and MIPS
- Your AUGS membership benefits or how to become a member



CONTINUING EDUCATION

WHO SHOULD ATTEND

PFD Week is for physicians, nurses, physical therapists, students, researchers, educators, and other healthcare professionals interested in Female Pelvic Medicine and Reconstructive Surgery. New treatment techniques and developments in both surgical and non-surgical settings will be shared through a variety of educational formats designed to encourage interactive discussion. Scientific material will be presented through lectures, posters, videos, live surgeries, and tips and tricks presentations.

EDUCATIONAL GOALS AND OBJECTIVES

- Describe and discuss the pathophysiology of pelvic floor disorders, including pelvic organ prolapse, urinary incontinence, fecal incontinence, and sexual dysfunction
- Identify risk factors and the epidemiology of pelvic floor disorders
- Delineate the impact of pelvic floor disorders on the quality of life for women who suffer from these conditions
- Review and discuss the standard and new tools to assess and quantify pelvic floor disorders
- Explain non-surgical and surgical treatments used to manage pelvic floor disorders

EDUCATION CREDITS

Creighton University designates this live activity for a maximum of 33.50 *AMA PRA Category 1 Credit(s)*[™]. Physicians should claim only the credit commensurate with the extent of their participation in the activity. (9/27=7.50 credits; 9/28=8.0 credits; 9/29=6.25 credits; 9/30=7.75 credits; 10/1=4.0 credits)

AAPA accepts AMA category 1 credit for the PRA from organizations accredited by ACCME.

Nurses CE

Creighton University Health Sciences Continuing Education designates this activity for up to 33.50 contact hour(s) for nurses. Nurses should claim only the credit commensurate with the extent of their participation in the activity. (9/27=7.50 credits; 9/28=8.0 credits; 9/29=6.25 credits; 9/30=7.75 credits; 10/1=4.0 credits)

Nurses licensed in Iowa and California: This activity was planned and developed in accordance with the continuing education standards of the American Nurses Credentialing Center (ANCC). The Iowa Board of Nursing and the California Board of Nursing will honor ANCC continuing education credits for face-to-face programs held outside Iowa and California, or for ANCC-approved online recorded courses taken in a self-study format.

Physical Therapy

This activity has not been pre-approved by the Federal Physical Therapy Board, however, for those who attend pre-conference workshops related to physical therapy (The Complicated Bladder: New Frontiers in Research, Assessment and Treatment of Urinary Tract Infection and Urinary Incontinence/Overactive Bladder; Current Topics in Pregnancy and Childbirth-Related Pelvic Health and Rehabilitation; and Physical Therapy and Allied Health Treatment of Bowel Disorders), all necessary information will be provided to each attendee to submit to their own state board for approval. Certificates of attendance with all of the required elements will be provided to all attendees via email following these workshops. Each professional is responsible for obtaining their own certification using this information.

The following States require pre-approval for physical therapy credit: California, Florida, Louisiana, Nevada, Ohio, and Texas.

Accreditation Statement

This activity has been planned and implemented by Creighton University Health Sciences Continuing Education (HSCE) and the American Urogynecologic Society (AUGS) for the advancement of patient care. Creighton University Health Sciences Continuing Education is accredited by the American Nurses Credentialing Center (ANCC), the Accreditation Council for Pharmacy Education (ACPE), and the Accreditation Council for Continuing Medical Education (ACCME) to provide continuing education for the healthcare team.



JOINTLY ACCREDITED PROVIDER[®]
INTERPROFESSIONAL CONTINUING EDUCATION

NETWORKING EVENTS

SPECIAL INTEREST GROUP (SIG) BUSINESS MEETINGS

Tuesday, September 27

5:30 p.m. – 7:30 p.m.

Are you a member of one of the many AUGS SIGs? If not, would you like to be? All attendees are welcome to join the SIG meetings to learn more about each SIG's activities and become involved with AUGS. The SIGs below will be meeting to discuss their goals and projects for the upcoming year.

Advanced Practice, Physical Therapy and Allied Health SIG

Chair: Ingrid Harm-Ernandes, PT, WCS, BCB-PMD

Vice Chair: Jan Baker, MS, APRN

Four Seasons 1

Basic Science SIG

Chair: Matthew Fraser, PhD

Vice Chair: Marianna Alperin, MD, MS

Room 102

Electronic Medical Record SIG

Chair: Adam Holzberg, DO, FACOG

Vice Chair: Audrey E. Curtis, MD

Room 612

Global Health SIG

Chair: Joan Blomquist, MD

Vice Chair: Felicia Lane, MS, MD

Four Seasons 4

Mesh/Graft Use in Pelvic Reconstructive Surgery SIG

Chair: Vincent Lucente, MD, FACOG

Vice Chair: Andrew Cassidenti, MD

Room 103

Private Practice SIG

Chair: Richard Mooney, MD

Vice Chair: Jorge Peacher, MD

Four Seasons 2

AUGS MEMBER VOLUNTEER APPRECIATION LUNCHEON *(Invitation only)*

Wednesday, September 28

12:00 p.m. – 1:00 p.m. | *Room 605*

AUGS would like to thank all of our volunteers for their support and time throughout the past year. Please join us for a lunch in your honor, as we celebrate the great work you have achieved in 2016.

PFD WEEK WELCOME RECEPTION

Wednesday, September 28

5:30 p.m. – 7:30 p.m. | *Hall A*

Join us in the Exhibit Hall for the Welcome Reception to kick off PFD Week 2016! Check out our industry exhibitors and catch up with colleagues as you enjoy light refreshments.

PFD RESEARCH FOUNDATION BOWLING FOR DOLLARS *(Silent auction winners and invited guests only)*

Wednesday, September 28

8:00 p.m. – 10:00 p.m. | *Denver Athletic Club*

Don your bowling shirt and shoes and join the PFD Research Foundation at the Denver Athletic Club for a night of friendly competition and fundraising. Teams will compete to take home prizes such as Best Team Performance and Best Team Spirit.

EXHIBIT HALL HAPPY HOUR

Thursday, September 29

5:00 p.m. – 6:00 p.m. | *Hall A*

Join AUGS in the Exhibit Hall for a happy hour celebration of PFD Week. While you mingle with colleagues and make new connections, be sure to visit the 2016 exhibitors and stop by the AUGS booth, # 101.

AUGSOME: TASTE OF DENVER

Friday, September 30

7:00 p.m. – 11:00 p.m. | *1417 California Street Denver, Colorado (Lot on the corner of 14th and California)*

Tickets can be purchased at Attendee Services for \$75 for physicians and \$35 for students.

Join AUGS for an old fashioned block party, complete with multiple music stages, brews from local Denver breweries, food trucks, and lots more. As always, the AUGSOME event is home to the Karaoke Challenge — sign up now in the AUGS booth! The whole family will enjoy our oversized games, donut wall, and even the chance to be a rockstar. All ticket sales benefit the PFD Research Foundation.



Change doesn't take commitment,
leadership, or collaboration...

It takes all three.

As leaders in Urology, we relentlessly pursue new science to make a difference in patients' lives. We make it our priority to stay on the cutting edge of urologic research to address unmet clinical and patient needs. And our commitment extends beyond product development. We seek to support the Urology community and to improve the lives of patients with urologic disease.

Changing tomorrow together, today.



Now Available from AUGS, the Bard POP-Q Pelvic Organ Prolapse Interactive Assessment Tool

You can now use the POP-Q Interactive Assessment Tool as a flexible application to show pelvic floor exam results to your patients.

- Enter POP-Q Scores
- Visually Demonstrate Captured Patient Measurements
- Educate Patients Before and After Surgery
- Option to Print Patient-Specific Results
- App coming in 2017!

▶ Now Available at
www.augs.org/POP-Q



NON-EDUCATIONAL INDUSTRY SUPPORTERS

THANK YOU TO THE 2016 PFD WEEK SPONSORS

PLATINUM LEVEL SPONSORS

Allergan

Boston Scientific

Coloplast

Medtronic, Inc.

GOLD LEVEL SPONSORS

Astellas

BRONZE LEVEL SPONSORS

Caldera Medical

Cogentix Medical

CooperSurgical

Neomedic International

The Prometheus Group

COPPER LEVEL SPONSORS

Pelvalon

Syneron Candela

Universal Triumph



PFDWEEK2016

SCHEDULE AT-A-GLANCE

TUESDAY, SEPTEMBER 27

7:00 a.m. – 5:00 p.m.	Registration Open — <i>A Lobby</i>
8:00 a.m. – 12:00 p.m.	Pre-Conference Workshops — <i>Room 102, 107, 111</i>
8:00 a.m. – 4:00 p.m.	Program Directors' Workshop — <i>Room 103</i>
1:00 p.m. – 5:00 p.m.	Pre-Conference Workshops — <i>Room 111, 102, 106</i>
5:30 p.m. – 7:30 p.m.	AUGS Special Interest Group Meetings — <i>Four Seasons 1-2, & 4, Room 102, 103, 612</i> * See page 23 for more information

WEDNESDAY, SEPTEMBER 28

7:00 a.m. – 6:00 p.m.	Registration Open — <i>A Lobby</i>
7:30 a.m. – 3:30 p.m.	Fellows' Research Day — <i>Four Season 2</i>
8:00 a.m. – 12:00 p.m.	Pre-Conference Workshops — <i>Room 102, 103, 107, 110, 111, 607</i>
11:30 a.m. – 12:30 p.m.	Navigating Patients Along the OAB Pathway to Effective Treatment Supported by Allergan — <i>Four Seasons 2-3</i>
12:00 p.m. – 1:00 p.m.	AUGS Volunteer Appreciation Luncheon (<i>Invitation Only</i>) — <i>Room 605</i>
1:00 p.m. – 5:00 p.m.	Pre-Conference Workshops — <i>Room 102, 103, 107, 110, 111</i>
3:30 p.m. – 5:30 p.m.	Bonus Session: Social Media and Apps to Improve Practice — <i>Room 607</i>
5:30 p.m. – 7:30 p.m.	Welcome Reception in Exhibit Hall — <i>Hall A</i>
8:00 p.m. – 10:00 p.m.	PFD Research Foundation Bowling for Dollars (<i>pre-registration required</i>) — <i>Denver Athletic Club</i>

THURSDAY, SEPTEMBER 29

6:15 a.m. – 5:30 p.m.	Registration Open — <i>A Lobby</i>
6:30 a.m. – 7:30 a.m.	Industry-Supported Education Sessions — <i>Room 201, 205</i>
6:45 a.m. – 7:45 a.m.	Meet the Experts Educational Roundtables — <i>Room 201</i>
8:00 a.m. – 9:00 a.m.	General Scientific Session — <i>Hall A</i>
9:00 a.m. – 9:45 a.m.	Presidential Address — <i>Hall A</i>
9:45 a.m. – 10:15 a.m.	Business Meeting and Awards — <i>Hall A</i>
10:15 a.m. – 10:45 a.m.	Break in the Exhibit Hall — <i>Hall A</i>
10:45 a.m. – 11:45 a.m.	Concurrent Sessions 1-3 — <i>Four Seasons 1-4</i> * See page 15 for more information
12:00 p.m. – 1:00 p.m.	Concurrent Sessions 4-6 — <i>Four Seasons 1-4</i> * See page 15 for more information
1:00 p.m. – 2:45 p.m.	Lunch in the Exhibit Hall — <i>Hall A</i>
1:15 p.m. – 2:15 p.m.	PFD Research Foundation Luncheon (<i>Invitation Only</i>) — <i>Room 103</i>
1:15 p.m. – 2:15 p.m.	Brining Nocturia into the Forefront: Heightening Awareness of a Common Condition Supported by Allergan <i>Room 201</i>
1:15 p.m. – 2:15 p.m.	Brining Nocturia into the Forefront: Heightening Awareness of a Common Condition Supported by Allergan <i>Room 107, 109</i>
2:45 p.m. – 4:00 p.m.	General Scientific Session — <i>Hall A</i>
4:00 p.m. – 5:00 p.m.	Mesh on Trial: Defendant and Plaintiff Perspectives — <i>Four Seasons 1</i>

THURSDAY, SEPTEMBER 29 *(continued)*

5:00 p.m. – 6:00 p.m.	Exhibit Hall Happy Hour — <i>Hall A</i>
7:00 p.m. – 9:00 p.m.	President's Reception <i>(Invitation Only)</i> — <i>Wynkoop Brewery</i>

FRIDAY, SEPTEMBER 30

6:15 a.m. – 5:30 p.m.	Registration Open — <i>A Lobby</i>
6:45 a.m. – 7:45 a.m.	Meet the Experts Educational Roundtables — <i>Room 201</i>
8:00 a.m. – 8:30 a.m.	General Scientific Session — <i>Hall A</i>
8:30 a.m. – 9:00 a.m.	Debate: Refractory Overactive Bladder Treatment: Onabotulinum Toxin Bladder Injection vs. Interstim Direct Sacral Nerve Stimulation — <i>Hall A</i>
9:00 a.m. – 9:30 a.m.	Raymond A. Lee Lecture: Mark D. Walters, MD — <i>Hall A</i>
9:30 a.m. – 10:00 a.m.	Break in the Exhibit Hall — <i>Hall A</i>
10:00 a.m. – 11:00 a.m.	Concurrent Sessions 7-9 — <i>Four Seasons 1-4</i> * See page 17 for more information
11:15 a.m. – 12:15 p.m.	Concurrent Sessions 10-12 — <i>Four Seasons 1-4</i> * See page 18 for more information
12:15 p.m. – 2:00 p.m.	Lunch in the Exhibit Hall — <i>Hall A</i>
12:30 p.m. – 1:30 p.m.	Transitioning from a Transobturator (TO) to a Single Incision Sling (SIS) Supported by Coloplast — <i>Room 205, 207</i>
12:45 p.m. – 1:45 p.m.	Evidence-Based Medicine — Patient-based Care Supported by Medtronic — <i>Room 201, 203</i>
12:30 p.m. – 2:00 p.m.	Past Presidents Luncheon <i>(Invitation Only)</i> — <i>Room 103</i>
2:00 p.m. – 3:00 p.m.	J. Marion Sims Panel: Best Evidence and Biggest Challenges of Global Urogynecologic Registries — <i>Hall A</i>
3:15 p.m. – 4:30 p.m.	Concurrent Sessions 13-15 — <i>Four Seasons 1-4</i> * See page 19 for more information
7:00 p.m. – 11:00 p.m.	AUGSOME: Taste of Denver — <i>1417 California Street Denver, Colorado (Lot on the corner of 14th and California)</i>

SATURDAY, OCTOBER 1

8:00 a.m. – 12:00 p.m.	Registration Open — <i>A Lobby</i>
9:00 a.m. – 10:00 a.m.	General Scientific Session — <i>Hall A</i>
10:00 a.m. – 1:00 p.m.	Live Surgery — <i>Hall A</i>
1:00 p.m.	Adjourn

CONCURRENT SESSIONS

THURSDAY, SEPTEMBER 29

10:45 a.m. – 11:45 a.m.	TIME	SCIENTIFIC CONCURRENT SESSION 1 — SURGERY AND SURGICAL PAIN FOUR SEASONS 2-3	TIME	SCIENTIFIC CONCURRENT SESSION 2 — BASIC SCIENCE FOUR SEASONS 1	SCIENTIFIC CONCURRENT SESSION 3 — EDUCATION AND QUESTIONNAIRE DEVELOPMENT FOUR SEASONS 4
	10:45 a.m. – 10:55 a.m.	Paper 6 — USE OF KETOROLAC FOLLOWING OUTPATIENT UROGYNECOLOGIC SURGERY: A RANDOMIZED CONTROL TRIAL	10:45 a.m. – 10:55 a.m.	Paper 11 — LYSYL OXIDASE LIKE 1 PLAYS A ROLE IN REGULATION OF BIOMECHANICAL PROPERTIES OF THE VAGINA DURING THE PERIPARTUM PERIOD	Paper 16 — A RANDOMIZED CONTROLLED TRIAL TESTING THE EFFICACY OF A VALIDATED E-LEARNING MODULE TO TEACH CORE URINARY INCONTINENCE OBJECTIVES
	10:55 a.m. – 11:05 a.m.	Paper 7 — MINIMALLY INVASIVE PROLAPSE SURGERY: IS THERE A DIFFERENCE IN PAIN AND RECOVERY BETWEEN VAGINAL RECONSTRUCTION AND ROBOTIC SACROCOLPOPEXY?	10:55 a.m. – 11:05 a.m.	Paper 12 — PREGNANCY AND PARTURITION NEGATIVELY IMPACT VAGINAL ANGLE	Paper 17 — THE EFFECTIVENESS OF A RANDOMIZED CONTROLLED TRIAL OF BLADDER HEALTH EDUCATION TO PREVENT URINARY INCONTINENCE
	11:05 a.m. – 11:15 a.m.	Paper 8 — SURGICAL PAIN AFTER TRANSOBTURATOR VERSUS RETROPUBIC MIDURETHRAL SLING—A SECONDARY ANALYSIS OF THE TOMUS TRIAL	11:05 a.m. – 11:15 a.m.	Paper 13 — PELVIC FLOOR MUSCLE RESPONSE TO MECHANICAL STRAINS ASSOCIATED WITH BIRTH INJURY	Paper 18 — COGNITIVE LOAD AND THE RETROPUBIC MIDURETHRAL SLING: A COGNITIVE TASK ANALYSIS
	11:15 a.m. – 11:25 a.m.	Paper 9 — A RANDOMIZED TRIAL OF URETHRAL LENGTH MEASUREMENT AND RETROPUBIC TVT POSITION	11:15 a.m. – 11:25 a.m.	Paper 14 — PHYTOESTROGEN DIET AND ESTRADIOL RESCUE OXYTOCIN RECEPTOR EXPRESSION IN UTEROSACRAL LIGAMENTS	Paper 19 — DEVELOPMENT OF A NEW PATIENT REPORTED OUTCOMES (PRO) MEASURE ON THE IMPACT OF NIGHTTIME URINATION (INTU) IN PATIENTS WITH NOCTURIA — PSYCHOMETRIC EVALUATION
	11:25 a.m. – 11:35 a.m.	Paper 10 — A PROSPECTIVE CASE SERIES EVALUATING OUTCOMES AND PATIENT SATISFACTION FOLLOWING USE OF DELAYED ABSORBABLE SUTURES IN LAPAROSCOPIC SACROCOLPOPEXY	11:25 a.m. – 11:35 a.m.	Paper 15 — LONGITUDINAL INVESTIGATION OF VAGINAL ATP SIGNALING IN AN ANIMAL MODEL OF MENOPAUSE	Paper 20 — VALIDATION OF AN INSTRUMENT TO ASSESS BARRIERS TO CARE-SEEKING FOR ACCIDENTAL BOWEL LEAKAGE
	11:35 a.m. – 11:47 a.m.	Video 2 — CERCLAGE SACROHYSTEROPEXY: A NOVEL TECHNIQUE FOR UTEROVAGINAL PROLAPSE	11:35 a.m. – 11:47 a.m.	Video 3 — AUTOLOGOUS SUBURETHRAL SLING USING THE TENSOR FASCIA LATA	Video 4 — LEFORT COLPOCLEISIS: A SPLIT SCREEN SIMULATION MODEL

12:00 p.m. – 1:00 p.m.	TIME	SCIENTIFIC CONCURRENT SESSION 4 — POST OPERATIVE RECOVERY FOUR SEASONS 4	TIME	SCIENTIFIC CONCURRENT SESSION 5 — BASIC SCIENCE, EMERGING TECHNOLOGIES AND THERAPIES FOUR SEASONS 1	SCIENTIFIC CONCURRENT SESSION 6 — SURGERY-RELATED EPIDEMIOLOGY FOUR SEASONS 2-3
	12:00 p.m. – 12:10 p.m.	Paper 25 — EVALUATING A PERIOPERATIVE CARE PROCESS BUNDLE FOR HYSTERECTOMY AND POSTOPERATIVE COMPLICATIONS IN MICHIGAN	12:00 p.m. – 12:04 p.m.	Oral Poster 1 — A DIVERSE, VIABLE FUNGAL COMMUNITY (“MYCOBIOME”) EXISTS IN THE URINE OF HEALTHY ASYMPTOMATIC FEMALES	Oral Poster 13 — SURGICAL INTERVENTION FOR PELVIC FLOOR DISORDERS DOES NOT INCREASE COMPLICATION RATES IN WOMEN UNDERGOING SURGERY FOR GYNECOLOGIC MALIGNANCIES
			12:04 p.m. – 12:08 p.m.	Oral Poster 2 — FEASIBILITY OF MEASURING BLADDER URINE OXYGEN TENSION	Oral Poster 14 — MID-URETHRAL SLING PROCEDURES IN THE UNITED STATES: READMISSION, REOPERATION, AND COMPLICATIONS
	12:10 p.m. – 12:20 p.m.	Paper 22 — THE PROMISE OF PROMIS IN PELVIC ORGAN PROLAPSE	12:08 p.m. – 12:12 p.m.	Oral Poster 3 — QUANTITATIVE MEASUREMENT OF CEREBRAL BLOOD FLOW CHANGES IN THE LIMBIC SYSTEM IN WOMEN WITH OVERACTIVE BLADDER	Oral Poster 15 — IMPACT OF PERFORMANCE OF PROPOSED QUALITY MEASURES ON COMPLICATIONS AND REOPERATION FOLLOWING HYSTERECTOMY FOR PROLAPSE
			12:12 p.m. – 12:16 p.m.	Oral Poster 4 — FIBROTIC RESPONSE TO SYNTHETIC MIDURETHRAL SLING MESH IN WOMEN WITH COMPLICATIONS	Oral Poster 16 — REPEAT MIDURETHRAL SLING MORE SUCCESSFUL THAN PERIURETHRAL BULKING FOR RECURRENT STRESS URINARY INCONTINENCE FOLLOWING FAILED MIDURETHRAL SLING
			12:16 p.m. – 12:20 p.m.	Questions for Oral Posters 1 – 4	Questions for Oral Posters 13 – 16

CONCURRENT SESSIONS *(CONTINUED)*

THURSDAY, SEPTEMBER 29

12:00 p.m. – 1:00 p.m.	TIME	SCIENTIFIC CONCURRENT SESSION 4 — POST OPERATIVE RECOVERY FOUR SEASONS 4	TIME	SCIENTIFIC CONCURRENT SESSION 5 — BASIC SCIENCE, EMERGING TECHNOLOGIES AND THERAPIES FOUR SEASONS 1	SCIENTIFIC CONCURRENT SESSION 6 — SURGERY-RELATED EPIDEMIOLOGY FOUR SEASONS 2-3
	12:20 p.m. – 12:30 p.m.	Paper 23 — ENHANCED RECOVERY AFTER UROGYNECOLOGIC SURGERY: A PROSPECTIVE ANALYSIS	12:20 p.m. – 12:24 p.m.	Oral Poster 5 — RISK FOR PELVIC ORGAN PROLAPSE IS SIGNIFICANTLY INCREASED WITH SUCCESSIVE INCREASES IN PARITY IN BOTH MICE AND WOMEN	Oral Poster 17 — NATURAL HISTORY OF OVERACTIVE BLADDER SYMPTOMS AT THE TIME OF MIDURETHRAL SLING PLACEMENT
			12:24 p.m. – 12:28 p.m.	Oral Poster 6 — HISTOMORPHOLOGICAL PROPERTIES OF PELVIC FLOOR MUSCLES IN THE ABSENCE AND PRESENCE OF PELVIC ORGAN PROLAPSE	Oral Poster 18 — DOES GENITAL HIATUS SIZE DECREASE AFTER APICAL SUPPORT ALONE: DO WE REALLY NEED A POSTERIOR REPAIR OR PERINEORRHAPHY?
	12:30 p.m. – 12:40 p.m.	Paper 24 — PSYCHOMETRICS OF THE PSR-13 FOR MEASUREMENT OF POSTOPERATIVE RECOVERY AFTER PELVIC RECONSTRUCTIVE SURGERY	12:28 p.m. – 12:32 p.m.	Oral Poster 7 — 12 AND 24 MONTH FOLLOWUP OF PATIENTS IN THE SOLECT TRIAL FOR SUI	Oral Poster 19 — SAME-DAY DISCHARGE AFTER ROBOTIC-ASSISTED SACROCOLPOPEXY
			12:32 p.m. – 12:36 p.m.	Oral Poster 8 — RESTING MAXIMUM URETHRAL CLOSURE PRESSURES MEASURED BY HIGH-RESOLUTION MANOMETRY INCREASE AFTER URETHRAL BULKING INJECTION	Oral Poster 20 — ASSOCIATION BETWEEN OBESITY AND PERIOPERATIVE MORBIDITY IN OPEN VERSUS LAPAROSCOPIC SACROCOLPOPEXY
			12:36 p.m. – 12:40 p.m.	Questions for Oral Posters 5 – 8	Questions for Oral Posters 17 – 20
	12:40 p.m. – 12:50 p.m.	Paper 21 — RESTRICTED CONVALESCENCE; OUTCOMES FOLLOWING UROGYNECOLOGIC PROCEDURES (RECOUP)	12:40 p.m. – 12:44 p.m.	Oral Poster 9 — INVESTIGATING THE KILLING POTENTIAL OF LACTOBACILLI AND T24 UROTHELIAL CELLS IN A CO-CULTURE MODEL	Oral Poster 21 — TRENDS IN THE 2012-13 MEDICARE SERVICES PROVIDER USE DATABASE FOR UROGYNECOLOGIC PROCEDURES
			12:44 p.m. – 12:48 p.m.	Oral Poster 10 — UNDERSTANDING THE INFLUENCE OF LACTOBACILLI ON HOST IMMUNITY IN WOMEN WITH URINARY TRACT INFECTIONS: ARE LACTOBACILLI THE KEY TO UTI PREVENTION?	Oral Poster 22 — THE EFFECT OF THE 2011 FDA SAFETY COMMUNICATION ON SURGICAL TREATMENT OF PELVIC ORGAN PROLAPSE AMONG COMMERCIALY INSURED WOMEN IN THE UNITED STATES
	12:50 p.m. – 12:58 p.m.	Video 5 — UTERINE-SPARING UTEROSACRAL LIGAMENT SUSPENSION	12:48 p.m. – 12:52 p.m.	Oral Poster 11 — APPLICATION OF A NOVEL PELVIC FLOOR DILATOR DURING ACTIVE LABOR TO PREVENT PELVIC FLOOR INJURIES	Oral Poster 23 — DID THE 2011 FDA ADVISORY ON TRANSVAGINAL MESH FOR PROLAPSE IMPACT UTILIZATION OF SLINGS FOR TREATMENT OF URINARY INCONTINENCE?
			12:52 p.m. – 12:56 p.m.	Oral Poster 12 — CHANGE IN ANAL SPHINCTER COMPLEX MEASUREMENTS FROM PRE-PREGNANCY TO POSTPARTUM ON DYNAMIC MAGNETIC RESONANCE IMAGING OF PRIMIPAROUS WOMEN	Oral Poster 24 — HYSTERECTOMY, FRIEND OR FOE WHEN COMBINED WITH LAPAROSCOPIC COLPOPEXY?
			12:56 p.m. – 1:00 p.m.	Questions for Oral Posters 9 – 12	Questions for Oral Posters 21 – 24

Voices for PFD

So I pee a little
when I laugh. That's
normal right?

Everyone talks about
Kegels. Do they really work?
How much is enough?

SHARE

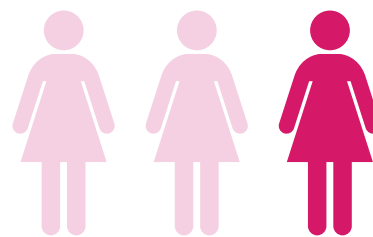
COMPREHENSIVE FPMRS RESOURCES WITH YOUR PATIENTS

Visit www.VoicesforPFD.org



Features of our online community include the following:

- Discussion forums on pelvic organ prolapse, bladder control and bowel control problems
- Ask the Experts: Have a question about pelvic floor disorders? Our physician experts are here to help.
- Educational content and downloadable resources about pelvic floor disorders



..... As many as

1 IN 3 WOMEN

experience pelvic floor disorders.

Our online community, Voices for PFD, is an outlet for women to share their stories, get support from other women, and ask experts about disorders impacting the pelvic floor, such as incontinence and prolapse.



Patient Fact Sheets - NEW!

Patients can utilize fact sheets to better understand diagnoses and treatment options. A total of 24 topics will be provided, including topics that are now available: Pelvic Organ Prolapse, Mid-Urethral Sling for Stress Incontinence, Overactive Bladder/VOUI, and Stress Urinary Incontinence.



Pelvic Floor Dialogues

Patients can subscribe to our free bi-monthly e-newsletter to learn and keep up-to-date on the latest advancements on pelvic floor disorders.



Voices for PFD Mobile App

Patients and caregivers can stay informed with urogynecologist-approved resources and FAQs on pelvic floor disorders.



Voices for PFD YouTube Channel

Women with pelvic disorders can subscribe to the Voices for PFD YouTube Channel to hear from leading physicians about pelvic floor disorder symptoms, treatment options, and resources. New videos are added throughout the year.



Patient educational resources are sponsored by AUGS and supported in part through educational grants from:



CONCURRENT SESSIONS *(CONTINUED)*

FRIDAY, SEPTEMBER 30

	TIME	SCIENTIFIC CONCURRENT SESSION 7 — OVERACTIVE BLADDER (OAB) FOUR SEASONS 1	TIME	SCIENTIFIC CONCURRENT SESSION 8 — CLINIC-BASED UROGYNECOLOGY, IMAGING TECHNOLOGY FOUR SEASONS 4	SCIENTIFIC CONCURRENT SESSION 9 — SURGERY FOUR SEASONS 2-3
10:00 a.m. – 11:00 a.m.	10:00 a.m. – 10:10 a.m.	Paper 36 — COST-EFFECTIVENESS OF ONABOTULINUMTOXINA VS. BEST SUPPORTIVE CARE, ORAL THERAPIES, PERCUTANEOUS TIBIAL NERVE STIMULATION, AND SACRAL NERVE STIMULATION FOR THE TREATMENT OF OVERACTIVE BLADDER FROM THE US PAYER PERSPECTIVE	10:00 a.m. – 10:04 a.m.	Oral Poster 25 — IS RECTOVAGINAL SEPTUM DEFECT ASSOCIATED WITH THE DEVELOPMENT OF POSTERIOR COMPARTMENT PROLAPSE? 2D AND 3D ENDOVAGINAL ULTRASOUND ASSESSMENT	Oral Poster 37 — IMPACT OF FUNCTIONAL STATUS AND COGNITION IN PATIENTS UNDERGOING PELVIC FLOOR RECONSTRUCTIVE SURGERY
			10:04 a.m. – 10:08 a.m.	Oral Poster 26 — IN VIVO ULTRASOUND CHARACTERISTICS OF VAGINAL MESH KIT COMPLICATIONS	Oral Poster 38 — RECOVERY TRAJECTORY FOLLOWING LAPAROSCOPIC SACROCOLPOPEXY FOR THE IDENTIFICATION OF MODIFIABLE BEHAVIORS IN WOMEN WITH PELVIC ORGAN PROLAPSE
	10:10 a.m. – 10:20 a.m.	Paper 37 — THE EFFECT OF PHARMACOLOGIC TREATMENT OF URGENCY URINARY INCONTINENCE ON SLEEP QUALITY AND DAYTIME SLEEPINESS	10:08 a.m. – 10:12 a.m.	Oral Poster 27 — WHAT CHANGES IN POSTPARTUM PELVIC FLOOR FUNCTION AND APPEARANCE ARE ATTRIBUTABLE TO LEVATOR ANI INJURY?	Oral Poster 39 — COMPARING ANTERIOR PROLAPSE REPAIR WITH AND WITHOUT ALLOGRAFT USE: A RANDOMIZED CONTROL TRIAL WITH LONG TERM FOLLOW UP
			10:12 a.m. – 10:16 a.m.	Oral Poster 28 — IS URETHRAL HYPERMOBILITY IN PATIENTS WITH SUI ASSOCIATED WITH LEVATOR ANI MUSCLE SUBDIVISION DEFECTS? 3 DIMENSIONAL ENDOVAGINAL ULTRASOUND ASSESSMENT	Oral Poster 40 — OUTCOMES OF RECTOVAGINAL FISTULA REPAIR
			10:16 a.m. – 10:20 a.m.	Questions for Oral Posters 25 – 28	Questions for Oral Posters 37 – 40
	10:20 a.m. – 10:30 a.m.	Paper 38 — HEALTH-RELATED QUALITY OF LIFE FOR ADULT WOMEN BY URINARY INCONTINENCE TYPE AND DEMOGRAPHIC CHARACTERISTICS	10:20 a.m. – 10:24 a.m.	Oral Poster 29 — LONG-TERM SAFETY AND SATISFACTION OF A NOVEL VAGINAL BOWEL CONTROL SYSTEM FOR THE TREATMENT OF ACCIDENTAL BOWEL LEAKAGE IN ADULT WOMEN	Oral Poster 41 — COMPARISON IN OUTCOMES BETWEEN OBSTETRIC AND NON-OBSTETRIC RECTOVAGINAL FISTULA REPAIRS
			10:24 a.m. – 10:28 a.m.	Oral Poster 30 — OPTIMAL PESSARY CARE: A MODIFIED DELPHI CONSENSUS STUDY	Oral Poster 42 — SURGEON TRAINING AND REOPERATION FOLLOWING HYSTERECTOMY FOR PELVIC ORGAN PROLAPSE
	10:30 a.m. – 10:40 a.m.	Paper 39 — LONG-TERM ONABOTULINUMTOXINA TREATMENT RESULTS IN CONSISTENT, DURABLE IMPROVEMENTS IN HEALTH-RELATED QUALITY OF LIFE IN PATIENTS WITH OVERACTIVE BLADDER	10:28 a.m. – 10:32 a.m.	Oral Poster 31 — MEASURES OF PELVIC FLOOR STRENGTH BY AGE AND PARITY USING THE ELVIE DEVICE	Oral Poster 43 — EFFECT OF POPQ STAGE ON SUCCESS OF SACROCOLPOPEXY COMPARED TO UTEROSACRAL LIGAMENT SUSPENSION
			10:32 a.m. – 10:36 a.m.	Oral Poster 32 — THE EFFECT OF COMMONLY PERFORMED EXERCISES ON THE AREA OF THE LEVATOR HIATUS AND THE LENGTH AND STRENGTH OF THE PELVIC FLOOR MUSCLES IN POSTPARTUM WOMEN	Oral Poster 44 — SURGICAL SITE INFECTION OF CLASS I WOUNDS IN GYNECOLOGIC SURGERY: IDENTIFYING INCIDENCE AND RISK FACTORS
			10:36 a.m. – 10:40 a.m.	Questions for Oral Posters 29 – 32	Questions for Oral Posters 41 – 44
	10:40 a.m. – 10:50 a.m.	Paper 40 — MICRORNAS AS POTENTIAL BIOMARKERS TO PREDICT RISK OF URINARY RETENTION FOLLOWING INTRADETRUSOR ONABOTULINUMTOXIN-A INJECTION	10:40 a.m. – 10:44 a.m.	Oral Poster 33 — DEVELOPMENT OF A FIDELITY INSTRUMENT FOR PELVIC FLOOR THERAPY FOR FEMALE PELVIC PAIN: A PSYCHOMETRIC VALIDATION STUDY	Oral Poster 45 — LEVATOR ANI MUSCLE DEFECTS IN PATIENTS WITH SURGICAL FAILURE
			10:44 a.m. – 10:48 a.m.	Oral Poster 34 — IS POPQ C-D AN ACCURATE ESTIMATE OF CERVICAL LENGTH? AN EXPLORATORY ANALYSIS	Oral Poster 46 — IMPLEMENTATION OF A NEW PROCEDURE: SINGLE PORT ACCESS ROBOTIC-ASSISTED LAPAROSCOPIC SACROCOLPOPEXY VERSUS MULTI-PORT ROBOTIC ACCESS
	10:50 a.m. – 11:00 a.m.	Video 7 — BLADDER AUGMENT WITH BLADDER NECK CLOSURE AND CONTINENT STOMA	10:48 a.m. – 10:52 a.m.	Oral Poster 35 — PUTTING POP-Q TO THE TEST: DOES C-D = CERVICAL LENGTH?	Oral Poster 47 — PATIENT REPORTED URINARY SYMPTOMS FOLLOWING REPEAT MIDURETHRAL SLING FOR THE TREATMENT OF RECURRENT STRESS INCONTINENCE: DOES PRIMARY SLING EXCISION MATTER?
			10:52 a.m. – 10:56 a.m.	Oral Poster 36 — PUTTING POP-Q TO THE TEST: DOES C-D = CERVICAL LENGTH?	Oral Poster 48 — OUTCOMES IN PELVIC ORGAN PROLAPSE SURGERY IN WOMEN USING ANTITHROMBOTIC THERAPY
			10:56 a.m. – 11:00 a.m.	Questions for Oral Posters 33 – 36	Questions for Oral Posters 45 – 48

CONCURRENT SESSIONS *(CONTINUED)*

FRIDAY, SEPTEMBER 30

11:15 a.m. – 12:15 p.m.	TIME	SCIENTIFIC CONCURRENT SESSION 10 — EMERGING SCIENCE AND NOVEL TECHNOLOGY USE FOUR SEASONS 1	TIME	SCIENTIFIC CONCURRENT SESSION 11 — CLINIC-BASED UROGYNECOLOGY FOUR SEASONS 2-3	SCIENTIFIC CONCURRENT SESSION 12 — PATIENT/TRAINEE EDUCATION & KNOWLEDGE FOUR SEASONS 4
	11:15 a.m. – 11:25 a.m.	Paper 41 — EVALUATION OF THE URINARY MICROBIOME OF WOMEN WITH UNCOMPLICATED STRESS URINARY INCONTINENCE	11:15 a.m. – 11:19 a.m.	Oral Poster 49 — VIVEVE I: VIVEVE TREATMENT OF THE VAGINAL INTROITUS TO EVALUATE EFFECTIVENESS: RESULTS FROM A RANDOMIZED CLINICAL TRIAL	Oral Poster 61 — RANDOMIZED TRIAL OF AN ENHANCED VISUAL CONSULTATION AND STANDARD CONSULTATION FOR PROLAPSE: IMPACT ON PATIENT SATISFACTION, KNOWLEDGE AND TREATMENT DECISION
			11:19 a.m. – 11:23 a.m.	Oral Poster 50 — USE OF A NOVEL FRACTIONAL CO ₂ LASER FOR THE TREATMENT OF GENTOURINARY SYNDROME OF MENOPAUSE: 1-YEAR OUTCOMES	Oral Poster 62 — EVALUATION OF PATIENT PREPAREDNESS FOR SURGERY: A SINGLE BLIND RANDOMIZED CONTROLLED TRIAL
	11:25 a.m. – 11:35 a.m.	Paper 42 — DIFFERENCES IN THE FEMALE URINARY MICROBIOTA BY CONTINENCE STATUS	11:23 a.m. – 11:27 a.m.	Oral Poster 51 — DELAY IN SEEKING CARE FOR PELVIC FLOOR DISORDERS AMONG CAREGIVERS	Oral Poster 63 — THE INFLUENCE OF SUPPLEMENTAL PATIENT EDUCATION VIDEO ON OVERWEIGHT AND OBESE WOMEN WITH PELVIC FLOOR DISORDERS
			11:27 a.m. – 11:31 a.m.	Oral Poster 52 — EFFECT OF AN ANTICHOLINERGIC ON COGNITIVE FUNCTION IN POSTMENOPAUSAL WOMEN: A RANDOMIZED TRIAL	Oral Poster 64 — VALIDATION OF A VAGINAL HYSTERECTOMY TASK TRAINER: USING STANDARDIZED ASSESSMENT TOOLS FOR EVERY LEVEL OF EXPERIENCE
			11:31 a.m. – 11:35 a.m.	Questions for Oral Posters 49 – 52	Questions for Oral Posters 61 – 64
	11:35 a.m. – 11:45 a.m.	Paper 43 — MODELING THE BIFURCATION OF THE GREAT VESSELS IN WOMEN RELATIVE TO THE SACRAL PROMONTORY: IMPACT OF AGE	11:35 a.m. – 11:39 a.m.	Oral Poster 53 — SUCCESS OF A REPEATED TINED LEAD TRIAL IN A REFRACTORY OAB POPULATION	Oral Poster 65 — A URINARY TRACT INJURY REPAIR SIMULATION MODEL
			11:39 a.m. – 11:43 a.m.	Oral Poster 54 — WHAT IS THE TRUE RATE OF URINARY RETENTION REQUIRING CATHETERIZATION AFTER BOTOX INJECTION	Oral Poster 66 — SELF-PERCEPTION OF SURGICAL APTITUDE DOES NOT ALIGN WITH ACTUAL TECHNICAL ABILITY: A ROLE FOR SURGICAL APTITUDE TESTING USING SIMULATION
	11:45 a.m. – 11:55 a.m.	Paper 44 — NGAL SERVES AS A NOVEL BIOMARKER FOR URINARY TRACT INFECTIONS	11:43 a.m. – 11:47 a.m.	Oral Poster 55 — PROSPECTIVE OBSERVATIONS OF PREVALENCE OF PERIPARTUM INCONTINENCE IN NULLIPARAS	Oral Poster 67 — PELVIC FLOOR DISORDER KNOWLEDGE IN WOMEN INVOLVED IN HIGH-INTENSITY INTERVAL TRAINING AND WEIGHT TRAINING EXERCISE
			11:47 a.m. – 11:51 p.m.	Oral Poster 56 — ONE AND THE SAME? NOCTURNAL ENURESIS AND OVERACTIVE BLADDER IN THE FEMALE VETERAN POPULATION	Oral Poster 68 — RESIDENT EDUCATION IN FEMALE PELVIC MEDICINE AND RECONSTRUCTIVE SURGERY
			11:51 a.m. – 11:55 a.m.	Questions for Oral Posters 52 – 55	Questions for Oral Posters 65 – 68
	11:55 a.m. – 12:05 p.m.	Paper 45 — LEVATOR ANI DEFECT DETECTION COMPARING 3D ULTRASOUND TO 3D MRI	11:55 a.m. – 11:59 a.m.	Oral Poster 57 — THE PROLAPSE INCONTINENCE SEXUAL QUESTIONNAIRE-IUGA REVISED (PISQ-IR); A NEW SUMMARY SCORE	Oral Poster 69 — PATIENTS' KNOWLEDGE OF AND ATTITUDE TOWARDS ROBOTIC SURGERY FOR PELVIC ORGAN PROLAPSE: A FELLOWS' PELVIC RESEARCH NETWORK MULTICENTER STUDY
			11:59 a.m. – 12:03 p.m.	Oral Poster 58 — THE RELATIONSHIP BETWEEN PELVIC ORGAN PROLAPSE AND PAP SMEAR ABNORMALITIES	Oral Poster 70 — INFLUENCE OF LOWER URINARY TRACT SYMPTOMS ON PROFICIENCY OF URINARY INCONTINENCE KNOWLEDGE
	12:05 p.m. – 12:13 p.m.	Video 8 — CYSTOSURE: A NOVEL TECHNIQUE TO MAKE CYSTOSCOPY SAFER, SIMPLER, AND MORE STANDARDIZED	12:03 p.m. – 12:07 p.m.	Oral Poster 59 — IS TESTING FOR OCCULT STRESS URINARY INCONTINENCE (OSUI) PREDICTIVE OF POST-OPERATIVE STRESS URINARY INCONTINENCE IN PATIENTS WITH PELVIC ORGAN PROLAPSE? A LONG TERM (UP TO 10 YEARS) CROSS-SECTIONAL SURVEY	Oral Poster 71 — DOES ANXIETY PREDICT SUBJECTIVE SHORT-TERM OUTCOME OF PROLAPSE REPAIR SURGERY?
			12:07 p.m. – 12:11 p.m.	Oral Poster 60 — COUGH HARDER: THE IMPORTANCE OF PATIENT COUGH EFFORT IN URODYNAMIC TESTING FOR STRESS INCONTINENCE	Oral Poster 72 — PRIMARY CARE PROVIDERS' EXPERIENCE, MANAGEMENT, AND REFERRAL PATTERNS REGARDING PELVIC FLOOR DISORDERS; A NATIONAL SURVEY
			12:11 p.m. – 12:15 p.m.	Questions for Oral Posters 57 – 60	Questions for Oral Posters 69 – 72

CONCURRENT SESSIONS *(CONTINUED)*

FRIDAY, SEPTEMBER 30

3:15 p.m. – 4:30 p.m.	TIME	SCIENTIFIC CONCURRENT SESSION 13 — BASIC SCIENCE & RELATED CLINICAL FOUR SEASONS 1	TIME	SCIENTIFIC CONCURRENT SESSION 14 — EPIDEMIOLOGY AND “BIG DATA” FOUR SEASONS 4	SCIENTIFIC CONCURRENT SESSION 15 — GENERAL CLINICAL & SURGICAL CARE FOUR SEASONS 2-3
	3:15 p.m. – 3:25 p.m.	Paper 47 — STRUCTURE-FUNCTION RELATIONSHIP OF HUMAN EXTERNAL ANAL SPHINCTER	3:15 p.m. – 3:25 p.m.	Paper 52 — ROLE OF OBESITY ON ROUTE OF HYSTERECTOMY IN A NATIONWIDE SAMPLE	Video 12 — SURGICAL TECHNIQUES FOR URETHRAL RECONSTRUCTION USING A VAGINAL FLAP
	3:25 p.m. – 3:35 p.m.	Paper 48 — THE EFFECT OF CESAREAN DELIVERY ON HIATAL DIMENSION IN SQUIRREL MONKEYS Paper 49 — THE ASSOCIATIONS OF PELVIC ORGAN PROLAPSE, AGE AND PARITY WITH HIATAL DIMENSIONS IN SQUIRREL MONKEYS	3:25 p.m. – 3:35 p.m.	Paper 53 — UTILIZATION OF APICAL VAGINAL SUPPORT PROCEDURES AT TIME OF HYSTERECTOMY PERFORMED FOR UTEROVAGINAL PROLAPSE: A NATIONAL ESTIMATE	Paper 58 — OBSTETRICAL ANAL SPHINCTER INJURIES (OASIS): DOES OBSTETRICAL CARE PROVIDER MATTER? A QUALITY ASSURANCE STUDY IN ONTARIO
	3:35 p.m. – 3:48 p.m.	Paper 50 — THE MYTH: IN VIVO DEGRADATION OF POLYPROPYLENE MESHES	3:35 p.m. – 3:45 p.m.	Paper 54 — READMISSION AND REOPERATION AFTER SURGERY FOR PELVIC ORGAN PROLAPSE	Paper 59 — PRE-OPERATIVE OBESITY IS A RISK FACTOR FOR FAILURE OF MID-URETHRAL SLING SURGERY AT 5 YEARS
	3:48 p.m. – 3:58 p.m.	Paper 51 — PREVENTING MESH PORE COLLAPSE THROUGH AUXETIC GEOMETRIES: A COMPREHENSIVE EVALUATION VIA COMPUTATIONAL MODELING	3:45 p.m. – 3:55 p.m.	Paper 55 — TEMPORAL RELATIONSHIP BETWEEN RECTOCELE AND DEFECATORY SYMPTOMS	Paper 60 — FEMALE SEXUAL DYSFUNCTION: A SYSTEMATIC REVIEW OF OUTCOMES ACROSS VARIOUS TREATMENT MODALITIES
	3:58 p.m. – 4:07 p.m.	Video 9 — 12 MONTH IN-DWELLING INTRAVESICAL AIR-FILLED BALLOON REMOVAL FOLLOWED BY NEW BALLOON REPLACEMENT PER THE SUCCESS CLINICAL TRIAL PROTOCOL	3:55 p.m. – 4:05 p.m.	Paper 56 — OBESITY AND PERIOPERATIVE COMPLICATIONS IN PELVIC RECONSTRUCTIVE SURGERY IN 2013: ANALYSIS OF THE NATIONAL INPATIENT SAMPLE	Paper 61 — PATIENT SATISFACTION AND INFORMED CONSENT FOR SURGERY
			4:05 p.m. – 4:11 p.m.	Tip and Trick 1 — SALINE INFUSION VAGINOGRAPHY IS AN ACCURATE NOVEL METHOD FOR DETECTION OF URETEROVAGINAL FISTULA	Paper 62 — PROSPECTIVE OUTCOMES OF A PELVIC FLOOR REHABILITATION PROGRAM INCLUDING VAGINAL ELECTROGALVANIC STIMULATION FOR URINARY, DEFECATORY AND PELVIC PAIN SYMPTOMS
			4:11 p.m. – 4:20 p.m.	Video 10 — REVISION OF INTRAVESICAL MESH	Tip and Trick 2 — AN INEXPENSIVE ANATOMICALLY-BASED MODEL FOR SACROCOLPOPEXY TRAINING SIMULATION
			4:20 p.m. – 4:33 p.m.	Video 11 — ROBOTIC EXCISION OF A MID- URETHRAL SLING EROSION IN THE SUPERIOR ASPECT OF THE URETHRA	Video 13 — SMALL BOWEL OBSTRUCTION FOLLOWING INTERNAL HERNIATION THROUGH PERITONEAL DEFECT: A RARE COMPLICATION OF LAPAROSCOPIC SACROCOLPOPEXY

KEYNOTE SPEAKERS

RAYMOND A. LEE LECTURE

Friday, September 30

9:00 a.m. – 9:30 a.m.

Hall A

The Raymond A. Lee Endowment is a named lectureship created by AUGS to honor one person annually who contributed to the development and surgical advancement of urogynecology and to further advance the knowledge and teaching of gynecologic surgery through ongoing AUGS educational programs.

THE MAKING OF A GREAT SURGEON: LESSONS FROM RAY



Mark D. Walters, MD

Mark D. Walters, MD is Professor and Vice-Chair of Gynecology in the Obstetrics, Gynecology, and Women's Health Institute at Cleveland Clinic. He is a renowned surgical educator and author. Dr.

Walters has authored or co-authored more than 140 publications, 75 book chapters, and five books, including four editions of Urogynecology and Reconstructive Pelvic Surgery which has been translated into Spanish, Chinese, and Italian. He was fellowship director in Urogynecology and FPMRS for 17 years and trained over 35 fellows, two-thirds of which are in academic or leadership positions in our specialty. Dr. Walters earned his MD at the Ohio State University College of Medicine and completed his internship and residency in obstetrics and gynecology at Tufts-New England Medical Center. He is board certified in obstetrics and gynecology and FPMRS. He is a past president of the Society of Gynecologic Surgeons and a fellow of the American College of Obstetrics and Gynecologists, and a member of the American Urogynecologic Society, Society of Gynecologic Surgeons, IUGA, and Cleveland Society of Obstetrics and Gynecology.

J. MARION SIMS PANEL

Friday, September 30

2:00 p.m. – 3:00 p.m.

Hall A

The J. Marion Sims Lecture is presented annually at PFD Week to continue to educate today's gynecological surgeon about the importance of supporting and encouraging innovation within women's health.

Endorsed by generous support of ABOG.

BEST EVIDENCE AND BIGGEST CHALLENGES OF GLOBAL UROGYNECOLOGIC REGISTRIES

Drs. Paul Riss and Cate Bradley will co-moderate a panel of engaging international speakers that join together to share the achievements, milestones, and challenges of their registries from Scandinavia (Dr. Gunnar Lose), Austria (Dr. Karl Tamussino), and Great Britain (Dr. Phil Tooze-Hobson). Dr. Bradley will also share updates on the Pelvic Floor Disorders Registry.



Cate Bradley, MD, MSCE



Gunnar Lose, MD DMSc



Paul Riss, MD



Karl Tamussino, MD



Philip Tooze-Hobson, MBBS, ASM, FRCOG, MD

GENERAL SESSIONS

MESH ON TRIAL: DEFENDANT AND PLAINTIFF PERSPECTIVES

How and why are transvaginal mesh lawsuits being won and lost? This unique live debate will feature both medical and legal experts explaining plaintiff perspectives and arguments about mesh use and industry's defense.

Pam Moalli, MD, PhD
Miles Murphy, MD, MSPH
Donald Ostergard, MD
Janna Nugent, JD
Derek Potts, JD
Dennis Miller, MD

DEBATE: REFRACTORY OVERACTIVE BLADDER TREATMENT: ONABOTULINUM TOXIN BLADDER INJECTION VS. INTERSTIM DIRECT SACRAL NERVE STIMULATION

How do we best manage refractory overactive bladder? Dr. Cindy Amundsen will moderate as Drs. Tony Visco and Karen Noblett debate the evidence for onabotulinum toxin versus sacral nerve stimulation.

Cindy Amundsen, MD
Karen Noblett, MD
Anthony Visco, MD

The Potts Law Firm

Derek Potts is the founder and national managing partner for The Potts Law Firm located in Houston, Texas. He focuses his casework on complex litigation and trials, including mass torts, pharmaceutical products, and medical device cases. He has served as a national leader in the development and resolution of vaginal mesh litigations.

Greenberg Traurig, LLP

Janna S. Nugent is an experienced litigator, focusing her practice on complex commercial litigation and business disputes, products liability, employment matters, and tort defense. Her experience extends to both state and federal courts in Florida and Georgia, and includes representing pharmaceutical companies and medical device manufacturers in products liability cases and multi-district litigation.

LIVE SURGERY

Saturday, October 1

10:00 a.m. – 1:30 p.m.

Observe and learn from expert reconstructive pelvic surgeons as AUGS broadcasts live surgeries from hospitals across the country. Dr. Roger Goldberg will exhibit transvaginal mesh placement (Uphold™ LITE) for apical prolapse repair, and Dr. Tristi Muir will demonstrate a native tissue transvaginal apical suspension using the uterosacral ligaments. Interspersed, Dr. Paul Magtibay will teach about relevant and important surgical anatomy in cadavers using laparoscopic and open approaches. Finally, Dr. Vincent Lucente will showcase a midurethral sling placement using only local anesthesia*, and Dr. Dionysios Veronikis will coach on best techniques for removal of a midurethral sling*.

* video case in real time

Tristi W. Muir, MD, assisted by R. Keith Huffaker, MD, MBA, FACOG., Uterosacral Ligament Suspension

Paul M. Magtibay, MD, assisted by Johnny Yi, M.D., FACOG, Cadaveric Dissection, Endoscopic Anatomy

Roger Goldberg, MD, MPH, assisted by Svjetlana Lozo, MD, Uphold Suspension Procedure

Video Surgical Procedure

Dionysios Veronikis, MD, Mesh Removal Procedure

Vincent Lucente, MD, FACOG, Midurethral Slings Under Local Anesthesia

WORKSHOP SCHEDULE

Attendees must pre-register in order to participate in a workshop.

TUESDAY, SEPTEMBER 27

8:00 a.m. – 12:00 p.m.

ADVANCES IN LAPAROSCOPY AND ROBOTIC RECONSTRUCTIVE PELVIC SURGERY

Kevin J. Stepp, MD; Janet S. Nugent, JD; Derek Potts, JD; Charlie Khamis, MBA; Geoffrey W. Cundiff, MD, FACOG, FACS, FRCSC

This workshop is presented by AAGL.

Room: 107

EVALUATION AND MANAGEMENT OF COMMON FEMALE UROLOGICAL CONCERNS

Suzette E. Sutherland, MD, MS; Una Lee, MD; Jane L. Miller, MD; Claire Yang, MD

Room: 102

THE COMPLICATED BLADDER: NEW FRONTIERS IN RESEARCH, ASSESSMENT AND TREATMENT OF URINARY TRACT INFECTION AND URINARY INCONTINENCE/OVERACTIVE BLADDER

Ingrid Harm-Ernandes, PT, WCS, BCB-PMD; Jan Baker, MS, APRN; Elizabeth Mueller, MD, MSME; Dee Hartman, PT; Colleen Mellen, MS, CNS, APRN; Michael J. Kennelly, MD, FPMRS, FACS; Diane K. Newman, DNP, FAAN, BCB-PMO; Johnny Yi, MD; Jenni Gablesburg, PT, DPT, MSc, MTC, WCS, BCB-PMD

Room: 111

8:00 a.m. – 4:00 p.m.

MANAGING YOUR FELLOWSHIP: FROM FELLOWS TO FACULTY

Members from ABOG, ACGME, and the AUGS Education Council
This workshop provides specific education for Program Directors.

Room: 103

1:00 p.m. – 5:00 p.m.

SOLVING YOUR TOUGH CASES: ESSENTIAL MUSCULOSKELETAL ASSESSMENT FOR PHYSICIANS, NURSES, AND PHYSICIAN ASSISTANTS

Ingrid Harm-Ernandes, PT, WCS, BCB-PMD; Dee Hartman, PT; Alexandra D. Hill, PT, DPT, CLT

Room: 111

BENCH-TO-BEDSIDE: HOW BASIC SCIENCE DISCOVERIES CAN IMPROVE PATIENT CARE

Matthew Fraser, PhD; Marianna Alperin, MD, MS; Kathleen Connell, MDC; Matthew Barber, MD, MHS; Linda Brubaker, MD, MS; John DeLancey, MD; Raffaella De Vita, PhD; Ann Lowry, MD; Anna Malykhina, MSc, PhD; Anthony Visco, MD; Sean Ward, PhD; Milena Weinstein, MD; R. Ann Word, MD; and various other panel moderators.

Room: 102

STUDY DESIGN AND STATISTICS: A HANDS-ON APPROACH

Jennifer Wu, MD, MPH; Nazema Siddiqui, MD, MHSC

Room: 107

WEDNESDAY, SEPTEMBER 28

8:00 a.m. – 12:00 p.m.

CODING FOR FEMALE PELVIC MEDICINE: BASIC TO ADVANCED SKILLS REVIEW

Marc Togliola, MD, FACOG; Brad Hart, MBA, MS, CMPE, CPC, CPMA, COBGC; Mitchell W. Schuster, MD, FACOG, FACS

Room: 103

GLOBAL HEALTH: COMPONENTS OF ETHICAL WORK

Joan Blomquist, MD; Grace Chen, MD; Lewis Wall, MD, DPhil

Room: 111

PHYSICAL THERAPY AND ALLIED HEALTH TREATMENT OF BOWEL DISORDERS

Carina Siracusa, PT, DPT, WCS

This session is presented by Section on Women's Health of the American Physical Therapy Association (APTA).

Room: 102

PRACTICAL APPLICATIONS FOR PELVIC FLOOR ULTRASOUND: HANDS-ON APPROACH

S. Abbas Shobeiri, MD; Lieschen H. Quiroz, MD; Ghazaleh Rostaminia, MD

Room: 107

QUALITY IMPROVEMENT AND REPORTING: HOW YOU CAN START TO THINK OF MEETING THE CHANGES COMING WITH MACRA

Samantha Pulliam, MD; Daniel Morgan, MD; Robert Flora, MD, MBA, MPH; Jill Rathbun

Room: 110

SURGICAL TECHNIQUES TO OPTIMIZE OUTCOMES FOR TRANSABDOMINAL AND TRANSVAGINAL MESH AUGMENTED POP REPAIRS

Andrew Cassidenti, MD; Patrick Culligan, MD, FACOG, FACS; Vincent Lucente, MD, FACOG

Room: 607

1:00 p.m. – 5:00 p.m.

**CODING FOR THE FEMALE PELVIC MEDICINE SPECIALIST:
BEYOND THE BASICS**

*Marc Toglia, MD, FACOG; Brad Hart, MBA, MS, CMPE, CPC, CPMA, COBGC;
Mitchell W. Schuster, MD, FACOG, FACS*

Room: 103

**CURRENT STATUS AND FUTURE POTENTIAL FOR THE USE OF
MESH AND SLINGS IN PELVIC RECONSTRUCTIVE SURGERY**

*Dennis Miller, MD; IJanet S. Nugent, JD; Derek Potts, JD; Charlie Khamis,
MBA; Geoffrey W. Cundiff, MD, FACOG, FACS, FRCSC*

Room: 111

**CURRENT TOPICS IN PREGNANCY AND CHILDBIRTH-RELATED
PELVIC HEALTH AND REHABILITATION**

*Jessica McKinney, PT, MS; Susan Clinton, PT, DSc, MHS, OCS, WCS, COMT,
FAAOMT; Lisa Kone Low, PhD, CNM, FACNM; Carolyn W. Swenson, MD*

Room: 102

**INSIGHTS INTO CAREER DEVELOPMENT AWARDS AND
GRANTS FOR EARLY STAGE INVESTIGATORS**

*Jennifer Wu, MD, MPH; Alayne Markland, DO, MSc; Jennifer Anger, MD,
MPH; Nazema Siddiqui, MD, MHSc; Vivian Sung, MD, MPH*

Room: 107

**LAPAROSCOPIC SACROCOLPOPEXY WITH AND WITHOUT THE
ROBOT: TIPS AND TRICKS FOR SUCCESS, AND WAYS TO AVOID
OR MANAGE COMPLICATIONS**

*Patrick Culligan, MD, FACOG, FACS; Charles Rardin, MD; Peter Rosenblatt,
MD, FACOG, FACS*

Room: 110

FELLOWS' RESEARCH DAY

We are pleased to provide complimentary education to fellows during PFD Week. Pre-registration is required. Visit the Attendee Services desk for more information. **All events are taking place in Four Seasons 2.**

WEDNESDAY, SEPTEMBER 28

BREAKFAST

7:30 a.m. – 8:00 a.m.

FELLOWS' FORUM

8:00 a.m. – 10:30 a.m.

The fellows' forum offers an opportunity for OB/GYN and Urology Fellows from across the country to meet one another and present their scientific work in a fellows-only podium session. Abstracts must be submitted in advance.

NAVIGATING THE JOB SEARCH

10:30 a.m. – 11:30 a.m.

From searching for available positions to avoiding pitfalls, listen as an informative panel describes lessons learned when searching for a first job or making a career switch.

NAVIGATING PATIENTS ALONG THE OAB PATHWAY TO EFFECTIVE TREATMENT

11:30 a.m. – 12:30 p.m.

Benjamin Brucker, MD, Assistant Professor, New York University

Supported by Allergan

AUGS-SGS FELLOWS' PELVIC RESEARCH NETWORK

12:30 p.m. – 3:30 p.m.

The Fellows' Pelvic Research Network (FPRN) will host an in-person meeting during Fellows' Day. The network enables fellows to work together cooperatively and conduct multi-center pelvic floor research projects. This network is open to all fellows in Female Pelvic Medicine and Reconstructive Surgery. Interested fellows from accredited and non-accredited programs across the United States and Canada are welcome to attend this meeting. All members of the network will have the opportunity to be actively involved in developing, implementing, conducting, and publishing research studies.

Prolapse Consensus Conference

November 10 – 11, 2016

Baltimore, MD

www.augs.org/ProlapseConsensus

Join us for a conference bringing together private and public stakeholders engaged in prolapse treatment working to identify an evidence-based, comprehensive strategy for improving treatment and reducing the impact of prolapse on women's lives.

Hear the unique perspectives of:

- AUGS Investigators/Researchers
- Funding Agencies
- Industry Partners
- Patient Representatives and Advocacy Groups



MEET THE EXPERTS EDUCATIONAL ROUNDTABLES

Roundtable discussions provide an informal, small-group setting for clinicians to present cases and discuss solutions with respected authorities in the field. Roundtables have limited availability; pre-registration is required. **All roundtables are taking place in Room 201.**

THURSDAY, SEPTEMBER 29

6:45 a.m. – 7:45 a.m.

Complications after Apical Vaginal Prolapse Surgeries (Robotic, Laparoscopic, Vaginal)

Samuel S. Badalian, MD, PhD

Mindfulness for Urinary Urge Incontinence

Jan Baker, MS, APRN

Neuromodulation: Common Challenges and Solutions

Kevin Benson, MD, MS

Persistent Postoperative Pain: Risk Factors and Prevention

Charles W. Butrick, MD

Utilization of Integrative Medicine in Urogynecology in the Perioperative Period

Karolynn Echols, MD, FACOG, FPMRS, FBOIM

Getting to “Yes”: Negotiation Skills for Your First Job

Caroline Foust-Wright, MD, MBA; Samantha Pulliam, MD

Pelvic Pain and Interstitial Cystitis: Strategies for Effective and Efficient Treatment

Bruce S. Kahn, MD, FACOG

Neurourology for the Urogynecologist

Michael J. Kennelly, MD, FACS

How to Incorporate Pelvic Floor Ultrasonography into Your Practice

S. Abbas Shobeiri, MD

Sling Revision: When, Why, and How

Mary Grey Maher, MD

How To Successfully Incorporate Dynamic Pelvic MRI into your Practice: A Clinician’s Journey and Perspective

Amy L. O’Boyle, MD, FACOG, FACS; Darcy Wolfman, MD

Procedural and E/M Reimbursements: How to Fill Out a RUC Survey

Cedric K. Olivera, MD, MS, FACOG, FACS, FPMRS

Monday Morning Quarterbacking Surgery: Videos in Education and Quality Improvement

Daniel Gruber, MS, MD, FACOG, FPMRS

The Role of 2D Dynamic and 3D Multicompartment Sonographic Imaging of the Pelvic Floor in the Management of Patients who Have Undergone Sling Surgery for Stress Urinary Incontinence

Aparna Hegde, MD, MS

Actively Managing Academic Mentorship Relationships: Methods for Mentees

Vivian W. Sung, MD, MPH

FRIDAY, SEPTEMBER 30

6:45 a.m. – 7:45 a.m.

Neurodiagnostics at Time of Sacral Nerve Stimulation

Charles W. Butrick, MD

Beyond Mesh Erosions: Managing “Vaginal Awareness” and Caring for the Difficult...

Mary Anna Denman, MD, MCR, FACOG, FACS

Risk Management in FPMRS: What a Mesh!

Jonathan L. Gleason, MD

How to Create an Award Winning Pelvic Floor Center

S. Abbas Shobeiri, MD

The Collaborative Research in Pelvic Surgery Consortium (CoRPS): How We Did It, and How You Can Join!

Cara Grimes, MD, MAS

Realizing the Promise of the Electronic Medical Record: Maximizing the Benefits to Patient Safety and Quality While Minimizing the Risks of Implementation and Use

Abraham Morse, MD, MBA

Treating Women with Congenital Genitourinary Anomalies: The Role for a Transitions Clinic

Maggie Mueller, MD, FACOG

UTIs: Evaluation, Evidence, and Experience

Deborah L. Myers, MD

The Patient Experience: CGCAHPS and Physician Communication

Adam S. Holzberg, DO, FACOG

Implementing a Multidisciplinary Surgical Site Infection Prevention Program

S. Renee Edwards, MD, MBA

Temperature Controlled Radiofrequency Treatments for Feminine Health

Red M. Alinsod, Jr., MD, FACOG, FACS, ACCE

Rethinking Vaginal Prolapse Surgery: Introducing Tissue Guided Regenerative Surgery

Andri Nieuwoudt, FCOG (SA) MMed (OCG)

Integrating a Nurse Practitioner into Your Practice

Leah Moynihan, RNC, MSN

AUGSOME

Taste of DENVER

Join Us for an Old Fashioned Block Party

FUN FOR EVERYONE! BRING THE FAMILY!

MUSIC STAGES | KARAOKE | DENVER BREWERIES | FOOD TRUCKS | DONUT WALL | OVERSIZE GAMES

FRIDAY, SEPTEMBER 30TH

7:00PM - 11:00PM

TICKET SALES

In Advance

Adults \$50; Fellows \$35; Under 18 \$10

Day Of:

Adults \$75; Fellows \$35; Under 18 \$10



Ticket sales
support the
2017 Research
Grants Program



INDUSTRY SUPPORTED EDUCATION

WEDNESDAY, SEPTEMBER 28

11:30 p.m. – 12:30 p.m.

NAVIGATING PATIENTS ALONG THE OAB PATHWAY TO EFFECTIVE TREATMENT — *Four Seasons 2-3*

Benjamin Brucker, MD, Assistant Professor, New York University

Supported by Allergan

THURSDAY, SEPTEMBER 29

1:15 p.m. – 2:15 p.m.

BRINING NOCTURIA INTO THE FOREFRONT: HEIGHTENING AWARENESS OF A COMMON CONDITION — *Room 107, 109*

Supported by Allergan

INDUSTRY SUPPORTED EDUCATION — *Room 201*

Supported by Boston Scientific

FRIDAY, SEPTEMBER 30

12:30 p.m. – 1:30 p.m.

TRANSITIONING FROM A TRANSOBTURATOR (TO) TO A SINGLE INCISION SLING (SIS) — *Rooms 205, 207*

Mickey Karram, MD; Costas Apostolis, MD

Noted physician educators share their experiences using transobturator and single incision slings. Learn what to take into account when transitioning to an SIS, including placement comparisons, technique differences, and product considerations.

Supported by Coloplast

12:45 p.m. – 1:45 p.m.

EVIDENCE-BASED MEDICINE –PATIENT-BASED CARE — *Room 201, 203*

Faculty: Kevin Benson, MD, Associate Clinical Professor, University of South Dakota Medical School; Dennis Miller, MD, Assistant and Clinical Professor, Medical College of Wisconsin

This course will highlight 36 month institute data, care pathways, patient case studies, and stories.

Supported by Medtronic

SCIENTIFIC PROGRAM

TUESDAY, SEPTEMBER 27

5:30 p.m. – 7:30 p.m.

AUGS Special Interest Group Meetings

See page 23.

WEDNESDAY, SEPTEMBER 28

7:30 a.m. – 3:30 p.m.

Fellows' Research Day — *Four Season 2*

11:30 p.m. – 12:30 p.m.

Navigating Patients Along the OAB

Pathway to Effective Treatment

Supported by Allergan — *Four Season 2-3*

12:00 p.m. – 1:00 p.m.

AUGS Volunteer Appreciation Luncheon

(Invitation only) — **Room 605**

3:30 p.m. – 5:30 p.m.

Social Media And Mobile Applications To Improve Practice

Moderators: Katherine Chen, MD; Jen Gunter, MD; Eric Jelovsek, MD; Patrick Culligan, MD

5:30 p.m. – 7:30 p.m.

Welcome Reception in Exhibit Hall

Hall A

8:00 p.m. – 10:00 p.m.

PFD Research Foundation Bowling

for Dollars — *Denver Athletic Club*
(pre-registration required)

THURSDAY, SEPTEMBER 29

6:45 a.m. – 7:45 a.m.

Meet the Experts Educational

Roundtables — **Room 201**

8:00 a.m. – 9:00 a.m.

General Session 1 — **Hall A**

Moderators: Miles Murphy, MD, MSPH;
Amy Rosenman, MD

8:00 a.m. – 8:13 a.m.

(Papers 1 & 2 are combined)

Paper 1 - REGENERATION OF VAGINAL SUPPORT UTILIZING AN ECM BIOSCAFFOLD: IMPACT ON ACTIVE AND PASSIVE TISSUE MECHANICS

D. Easley¹, K. Knight¹, R. Liang²,
S. D. Abramowitch¹, P. Moalli².

¹Bioengineering, University of Pittsburgh, Pittsburgh, PA; ²OBGYN, University of Pittsburgh, Pittsburgh, PA

Paper 2 - REGENERATION OF VAGINAL SUPPORT UTILIZING AN ECM BIOSCAFFOLD: IMPACT ON VAGINAL STRUCTURAL PROTEINS

P. Moalli¹, R. Liang¹, S. Palcsey², S. D. Abramowitch¹. ¹University of Pittsburgh, Pittsburgh, PA; ²OB&GYN, Magee-Womens Research Institute, Pittsburgh, PA

8:13 a.m. – 8:23 a.m.

Paper 3 - THE EFFECT OF INTRAVENOUS ACETAMINOPHEN ON POSTOPERATIVE PAIN AND NARCOTIC CONSUMPTION FOLLOWING VAGINAL RECONSTRUCTIVE SURGERY: A DOUBLE-BLIND RANDOMIZED PLACEBO-CONTROLLED TRIAL

C. C. Crisp¹, M. L. Khan², L. B. Westermann¹, D. Mazloomdoost¹, D. Lambers², S. D. Kleeman¹, R. N. Pauls¹. ¹Division of Urogynecology and Reconstructive Pelvic Surgery, TriHealth Good Samaritan and Bethesda North Hospitals, Cincinnati, OH; ²Obstetrics and Gynecology, TriHealth, Cincinnati, OH

8:23 a.m. – 8:33 a.m.

Paper 4 - A RANDOMIZED DOUBLE-BLIND PLACEBO-CONTROLLED TRIAL ON THE EFFECT OF LOCAL ANALGESIA ON POSTOPERATIVE GLUTEAL PAIN IN PATIENTS UNDERGOING SACROSPINOUS LIGAMENT COLPOPEXY

C. Unger, M. D. Walters. OBGYN, Cleveland Clinic, Cleveland, OH

8:33 a.m. – 8:43 a.m.

Paper 5 - METHENAMINE HIPPURATE VERSUS CIPROFLOXACIN TO PREVENT POSTOPERATIVE URINARY TRACT INFECTION: RESULTS OF A RANDOMIZED CONTROLLED TRIAL

C. M. Chu², A. L. Smith¹, L. A. Arya², A. K. Pahwa², S. J. Weissbart², K. Desai², U. U. Andy², H. S. Harvie². ¹Urology, Hospital of the University of Pennsylvania, Philadelphia, PA; ²Urogynecology, University of Pennsylvania, Philadelphia, PA

8:43 a.m. – 8:56 a.m.

Video 1 - BENIGN DISEASES OF THE FEMALE URETHRA

P. G. Barboglio Romo, A. Cameron. Department of Urology, University of Michigan, Ann Arbor, MI

9:00 a.m. – 9:45 a.m.

Presidential Address — **Hall A**

Douglass S. Hale, MD

9:45 a.m. – 10:15 a.m.

Business Meeting and Awards — **Hall A**

10:15 a.m. – 10:45 a.m.

Break in the Exhibit Hall — **Hall A**

10:45 a.m. – 11:45 a.m.

Concurrent Session 1 — Surgery and Surgical Pain — *Four Seasons 2-3*

Moderators: Patrick Culligan, MD; Elizabeth Geller, MD

10:45 a.m. – 10:55 a.m.

Paper 6 - USE OF KETOROLAC FOLLOWING OUTPATIENT UROGYNECOLOGIC SURGERY: A RANDOMIZED CONTROL TRIAL

E. Trowbridge¹, L. Caldwell², D. Kim³, D. M. Franko⁴, J. N. Jackson⁵, A. M. Shilling⁶, K. L. Hullfish¹. ¹OBGYN, University of Virginia, Charlottesville, VA; ²George Washington University, Washington, DC; ³School of Medicine, University of Virginia, Charlottesville, VA; ⁴Dartmouth-Hitchcock Medical Center, Hanover, NH; ⁵Urology, University of Virginia, Charlottesville, VA; ⁶Anesthesia, University of Virginia, Charlottesville, VA

10:55 a.m. – 11:05 a.m.

Paper 7 - MINIMALLY INVASIVE PROLAPSE SURGERY; IS THERE A DIFFERENCE IN PAIN AND RECOVERY BETWEEN VAGINAL RECONSTRUCTION AND ROBOTIC SACROCOLPOPEXY?

L. B. Westermann, C. C. Crisp, D. Mazloomdoost, S. D. Kleeman, R. N. Pauls. OBGYN, TriHealth Good Samaritan Hospital, Cincinnati, OH

SCIENTIFIC PROGRAM *(CONTINUED)*

THURSDAY, SEPTEMBER 29

(Continued)

11:05 a.m. – 11:15 a.m.

Paper 8 - SURGICAL PAIN AFTER TRANSOBTURATOR VERSUS RETROPUBIC MIDURETHRAL SLING—A SECONDARY ANALYSIS OF THE TOMUS TRIAL

T. N. Thomas, L. N. Siff, J. E. Jelovsek, M. D. Barber. Cleveland Clinic, Cleveland, OH

11:15 a.m. – 11:25 a.m.

Paper 9 - A RANDOMIZED TRIAL OF URETHRAL LENGTH MEASUREMENT AND RETROPUBIC TVT POSITION

A. Akl, S. K. Taege, C. Brincat, L. Brubaker, E. R. Mueller. Obstetrics/ Gynecology & Urology, Loyola University Stritch School of Medicine, Maywood, IL

11:25 a.m. – 11:35 a.m.

Paper 10 - A PROSPECTIVE CASE SERIES EVALUATING OUTCOMES AND PATIENT SATISFACTION FOLLOWING USE OF DELAYED ABSORBABLE SUTURES IN LAPAROSCOPIC SACROCOLPOPEXY

D. L. Taylor, A. M. Hill, C. K. Cottrell, C. Apostolis. Obstetrics and Gynecology, Akron General Medical Center, Akron, OH

11:35 a.m. – 11:47 a.m.

Video 2 - CERCLAGE SACROHYSTEROPEXY: A NOVEL TECHNIQUE FOR UTEROVAGINAL PROLAPSE

P. L. Rosenblatt, Boston Urogynecology Associates, Mount Auburn Hospital, Cambridge, MA

10:45 a.m. – 11:45 a.m.

Concurrent Session 2 — Basic Science

Four Seasons 1

Moderators: W. Thomas Gregory, MD; R. Ann Word, MD

10:45 a.m. – 10:55 a.m.

Paper 11 - LYSYL OXIDASE LIKE 1 PLAYS A ROLE IN REGULATION OF BIOMECHANICAL PROPERTIES OF THE VAGINA DURING THE PERIPARTUM PERIOD

A. Borazjani, M. Damaser. Cleveland Clinic, Cleveland, OH

10:55 a.m. – 11:05 a.m.

Paper 12 - PREGNANCY AND PARTURITION NEGATIVELY IMPACT VAGINAL ANGLE

S. Oliphant¹, T. P. Canavan³, S. Palcsey², L. A. Meyn², P. Moalli³. ¹University of Arkansas for Medical Sciences, Little Rock, AR; ²Magee-Womens Research Institute, Pittsburgh, PA; ³Magee-Womens Hospital of UPMC, Pittsburgh, PA

11:50 a.m. – 11:15 a.m.

Paper 13 - PELVIC FLOOR MUSCLE RESPONSE TO MECHANICAL STRAINS ASSOCIATED WITH BIRTH INJURY

T. Catanzarite¹, L. N. Bou-Malham², M. C. Esparza³, S. O'Connor³, M. Alperin¹. ¹Reproductive Medicine, Division of FPMRS, University of California, San Diego, San Diego, CA; ²Biological Sciences, University of California, San Diego, San Diego, CA; ³Orthopedic Surgery, University of California, San Diego, San Diego, CA

11:15 a.m. – 11:25 a.m.

Paper 14 - PHYTOESTROGEN DIET AND ESTRADIOL RESCUE OXYTOCIN RECEPTOR EXPRESSION IN UTEROSACRAL LIGAMENTS

R. Iwanaga¹, E. S. Branson¹, D. J. Orlicky¹, M. K. Guess², K. A. Connell¹. ¹OB/GYN, University of Colorado School of Medicine, Aurora, CO; ²Obstetrics & Gynecology, Yale School of Medicine, New Haven, CT

11:25 a.m. – 11:35 a.m.

Paper 15 - LONGITUDINAL INVESTIGATION OF VAGINAL ATP SIGNALING IN AN ANIMAL MODEL OF MENOPAUSE

J. Harroche, S. O. Suadicani. Female Pelvic Medicine and Reconstructive Surgery, Montefiore Medical Center, Bronx, NY

11:35 a.m. – 11:47 a.m.

Video 3 - AUTOLOGOUS SUBURETHRAL SLING USING THE TENSOR FASCIA LATA

M. S. Cramer, M. Madrigal, T. P. Hoke, B. Vakili. OB/GYN, Christiana Care Health System, Newark, DE

10:45 a.m. – 11:45 a.m.

Concurrent Session 3 — Education and Questionnaire Development

Four Seasons 4

Moderators: J. Eric Jelovsek, MD, MMEd; Bela Kudish, MD, MS

10:45 a.m. – 10:55 a.m.

Paper 16 - A RANDOMIZED CONTROLLED TRIAL TESTING THE EFFICACY OF A VALIDATED E-LEARNING MODULE TO TEACH CORE URINARY INCONTINENCE OBJECTIVES

C. Y. Parker-Autry¹, E. Shen², J. M. McDonald³, J. Covarrubias⁴, H. E. Richter⁴. ¹Ob/Gyn, Urology, Wake Forest School of Medicine, Winston-Salem, NC; ²Medical Education, Wake Forest School of Medicine, Winston-Salem, NC; ³School of Medicine, University of Alabama at Birmingham, Birmingham, AL; ⁴Ob/Gyn, University of Alabama at Birmingham, Birmingham, AL

10:55 a.m. – 1:05 a.m.

Paper 17 - THE EFFECTIVENESS OF A RANDOMIZED CONTROLLED TRIAL OF BLADDER HEALTH EDUCATION TO PREVENT URINARY INCONTINENCE

D. K. Newman¹, C. Sampselle³, J. Miller². ¹Surgery/Urology, University of Pennsylvania, Philadelphia, PA; ²School of Nursing, University of Michigan, Ann Arbor, MI; ³School of Nursing, University of Michigan, Ann Arbor, MI

11:05 a.m. – 11:15 a.m.

Paper 18 - COGNITIVE LOAD AND THE RETROPUBIC MIDURETHRAL SLING: A COGNITIVE TASK ANALYSIS

M. F. Ackenbom¹, E. B. Littleton², G. Sutkin¹. ¹University of Pittsburgh Medical Center, Pittsburgh, PA; ²University of Pittsburgh School of Medicine, Pittsburgh, PA

SCIENTIFIC PROGRAM (CONTINUED)

THURSDAY, SEPTEMBER 29

(Continued)

11:15 a.m. – 11:25 a.m.

Paper 19 - DEVELOPMENT OF A NEW PATIENT REPORTED OUTCOMES (PRO) MEASURE ON THE IMPACT OF NIGHTTIME URINATION (INTU) IN PATIENTS WITH NOCTURIA - PSYCHOMETRIC EVALUATION

J. Bennett¹, K. Khalaf⁵, B. Banderas², S. Abrams³, L. Cheng⁴, S. Fein⁴. ¹Grand Rapids Women's Health, Grand Rapids, MI; ²Adelphi Values, Boston, MA; ³Allergan plc, Irvine, CA; ⁴Serenity Pharmaceuticals, LLC, Milford, PA; ⁵Xcenda, Palm Harbor, FL

11:25 a.m. – 11:35 a.m.

Paper 20 - VALIDATION OF AN INSTRUMENT TO ASSESS BARRIERS TO CARE-SEEKING FOR ACCIDENTAL BOWEL LEAKAGE

H. W. Brown¹, M. Wise², D. Westenberg¹, N. B. Schmuhl¹, K. L. Brezoczky⁵, R. G. Rogers⁴, M. L. Constantine³. ¹University of Wisconsin-Madison School of Medicine and Public Health, Madison, WI; ²University of Wisconsin-Madison School of Pharmacy, Madison, WI; ³University of Minnesota School of Public Health, Minneapolis, MN; ⁴University of New Mexico Health Sciences Center, Albuquerque, NM; ⁵Healthy Mature Living Foundation, Los Gatos, CA

11:35 a.m. – 11:47 a.m.

Video 4 - LEFORT COLPOCLEISIS: A SPLIT SCREEN SIMULATION MODEL

A. Petrikovets¹, C. Krudy², J. W. Henderson¹, R. James¹, J. Mangel², R. Pollard², S. T. Mahajan¹. ¹Female Pelvic Medicine & Reconstructive Surgery, University Hospitals Case Medical Center, Cleveland, OH; ²Urogynecology & Reconstructive Pelvic Surgery, MetroHealth Medical Center, Cleveland, OH

12:00 a.m. – 1:00 p.m.

Concurrent Session 4 — Post Operative Recovery — Four Seasons 4

Moderators: Elisabeth Erekson, MD, MPH; John Occhino, MD, MS

12:00 p.m. – 12:10 p.m.

Paper 25 - EVALUATING A PERIOPERATIVE CARE PROCESS BUNDLE FOR HYSTERECTOMY AND POSTOPERATIVE COMPLICATIONS IN MICHIGAN

A. G. Sammarco¹, J. A. Harris², C. W. Swenson¹, S. Uppal², D. M. Morgan¹. ¹Female Pelvic Medicine and Reconstructive Surgery, University of Michigan, Ann Arbor, MI; ²Obstetrics and Gynecology, University of Michigan, Ann Arbor, MI

12:10 p.m. – 12:20 p.m.

Paper 22 - THE PROMISE OF PROMIS IN PELVIC ORGAN PROLAPSE

E. Hall, K. Bochenska, J. Griffith, K. Kenton, A. Alverdy, C. Lewicky-Gaupp, M. G. Mueller. Northwestern University, Chicago, IL

12:20 p.m. – 12:30 p.m.

Paper 23 - ENHANCED RECOVERY AFTER UROGYNECOLOGIC SURGERY: A PROSPECTIVE ANALYSIS

E. Trowbridge¹, S. L. Evans¹, B. Sarosiek², S. C. Modesitt¹, D. L. Redick¹, M. Tiourine³, R. Thiele³, T. Hedrick⁴. ¹OB/GYN, University of Virginia, Charlottesville, VA; ²University of Virginia, Charlottesville, VA; ³Anesthesiology, University of Virginia, Charlottesville, VA; ⁴Surgery, University of Virginia, Charlottesville, VA

12:30 p.m. – 12:40 p.m.

Paper 24 - PSYCHOMETRICS OF THE PSR-13 FOR MEASUREMENT OF POSTOPERATIVE RECOVERY AFTER PELVIC RECONSTRUCTIVE SURGERY

J. S. Carpenter², M. Heit¹, C. X. Chen³, R. Stewart⁴, J. J. Hamner⁴, K. L. Rand⁵. ¹Female Pelvic Medicine and Reconstructive Surgery, Indiana University School of Medicine, Indianapolis, IN; ²Science of Nursing Care, Indiana University School of Nursing, Indianapolis, IN; ³Indiana University School of Nursing, Indianapolis, IN; ⁴Obstetrics and Gynecology, Indiana University School of Medicine, Indianapolis, IN; ⁵Psychology, Indiana University-Purdue University Indianapolis, Indianapolis, IN

12:40 p.m. – 12:50 p.m.

Paper 21 - RESTRICTED CONVALESCENCE; OUTCOMES FOLLOWING UROGYNECOLOGIC PROCEDURES (RECOUP)

M. G. Mueller², C. Lewicky-Gaupp², S. A. Collins⁴, M. Abernethy³, A. Alverdy¹, K. Kenton². ¹OB/GYN, Northwestern University Feinberg School of Medicine, Chicago, IL; ²OB/GYN and Urology, Northwestern University Feinberg School of Medicine, Chicago, IL; ³Gynecology and Obstetrics, Johns Hopkins, Baltimore, MD; ⁴OB/GYN, University of Chicago Pritzker School of Medicine, Chicago, IL

12:50 p.m. – 12:58 p.m.

Video 5 - UTERINE-SPARING UTEROSACRAL LIGAMENT SUSPENSION

J. S. Zigman, J. J. Navas, T. Yazdany, A. E. Rosenman. FPMRS, Harbor-UCLA Medical Center, Los Angeles, CA

THURSDAY, SEPTEMBER 29*(Continued)*

12:00 p.m. – 1:00 p.m.

Concurrent Session 5 — Basic Science, Emerging Technologies and Therapies*Four Seasons 1***Moderators:** Clifford Wai, MD; Blair Washington, MD, MHA

12:00 p.m. – 12:04 p.m.

Oral Poster 1 - A DIVERSE, VIABLE FUNGAL COMMUNITY ("MYCOBIOME") EXISTS IN THE URINE OF HEALTHY ASYMPTOMATIC FEMALES**A. L. Ackerman²**, K. S. Eilber², J. Tang¹, J. Kim³, M. R. Freeman³, J. T. Anger².¹Biomedical Sciences, Cedars-Sinai Medical Center, Los Angeles, CA;²Surgery, Division of Urology, Cedars-Sinai Medical Center, Los Angeles, CA;³Biomedical Sciences and Surgery, Cedars-Sinai Medical Center, Los Angeles, CA

12:04 p.m. – 12:08 p.m.

Oral Poster 2 - FEASIBILITY OF MEASURING BLADDER URINE OXYGEN TENSION**M. Brady**, M. Genereux, C. M. Fitzgerald, C. Brincat, L. Brubaker, E. R. Mueller. Obstetrics and Gynecology, Division of Female Pelvic Medicine and Reconstructive Surgery, Loyola University Medical Center, Maywood, IL

12:08 p.m. – 12:12 p.m.

Oral Poster 3 - QUANTITATIVE MEASUREMENT OF CEREBRAL BLOOD FLOW CHANGES IN THE LIMBIC SYSTEM IN WOMEN WITH OVERACTIVE BLADDER**S. J. Weissbart¹**, S. Xu², H. Rao², L. A. Arya¹. ¹Obstetrics and Gynecology, University of Pennsylvania, Philadelphia, PA; ²Center for functional neuroimaging, University of Pennsylvania, Philadelphia, PA

12:12 p.m. – 12:16 p.m.

Oral Poster 4 - FIBROTIC RESPONSE TO SYNTHETIC MIDURETHRAL SLING MESH IN WOMEN WITH COMPLICATIONS**L. Tennyson¹**, S. Palcsey³, S. D. Abramowitch⁴, P. Moalli². ¹Urology, UPMC, Pittsburgh, PA; ²Urogynecology, Magee-Womens Hospital, UPMC, Pittsburgh, PA; ³Magee Womens Research Institute, Pittsburgh, PA; ⁴Bioengineering, University of Pittsburgh, Pittsburgh, PA

12:16 p.m. – 12:20 p.m.

Questions for Oral Posters 1 — 4

12:20 p.m. – 12:24 p.m.

Oral Poster 5 - RISK FOR PELVIC ORGAN PROLAPSE IS SIGNIFICANTLY INCREASED WITH SUCCESSIVE INCREASES IN PARITY IN BOTH MICE AND WOMEN**A. Borazjani**, J. Pizarro-Berdichevsky, H. B. Goldman, M. Damaser. Cleveland Clinic, Cleveland, OH

12:24 p.m. – 12:28 p.m.

Oral Poster 6 - HISTOMORPHOLOGICAL PROPERTIES OF PELVIC FLOOR MUSCLES IN THE ABSENCE AND PRESENCE OF PELVIC ORGAN PROLAPSE**M. S. Cook²**, Y. Aghajan³, T. Kaddis¹, G. Zazueta-Damian⁴, S. A. Menefee⁴, M. Alperin¹. ¹Reproductive Medicine, Division of FPMRS, University of California, San Diego, La Jolla, CA; ²Integrative Biology and Physiology, University of Minnesota, Minneapolis, MN; ³School of Medicine, University of California, San Diego, San Diego, CA; ⁴Obstetrics and Gynecology, Kaiser Permanente, San Diego, San Diego, CA

12:28 p.m. – 12:32 p.m.

Oral Poster 7 - 12 AND 24 MONTH FOLLOWUP OF PATIENTS IN THE SOLECT TRIAL FOR SUI**S. De Wachter¹**, G. van Koeveeringe², G. A. Tommaselli³, R. Angioli⁴, M. de Wildt⁵, K. Everaert⁶, D. Michiels⁷, E. Koldewijn⁵, W. Scheepens⁵, A. Spinoit⁶, D. Oerlemans², J. Wyndaele¹. ¹Antwerp University Hospital, Antwerp, Belgium; ²Department of Urology, Maastricht University Medical Centre, Maastricht, Netherlands; ³Department of Obstetrics and Gynecology, Università Degli Studi Di Napoli "Federico II", Naples, Italy; ⁴Department of Obstetrics and Gynecology, Università Di Roma Campus Biomedico, Rome, Italy; ⁵Department of Urology, Catharina Ziekenhuis, Eindhoven, Netherlands; ⁶Department of Urology, Ghent University Hospital, Ghent, Belgium; ⁷Department of Urology, UZ Brussel, Brussels, Belgium

12:32 p.m. – 12:36 p.m.

Oral Poster 8 - RESTING MAXIMUM URETHRAL CLOSURE PRESSURES MEASURED BY HIGH-RESOLUTION MANOMETRY INCREASE AFTER URETHRAL BULKING INJECTION**E. J. Wasenda¹**, A. C. Kirby², C. W. Nager¹. ¹Department of Reproductive Medicine, Division of Female Pelvic Medicine and Reconstructive Surgery, UC San Diego Health System, San Diego, CA; ²Department of Obstetrics & Gynecology, Division of Urogynecology, University of Washington, Seattle, WA

SCIENTIFIC PROGRAM (CONTINUED)

THURSDAY, SEPTEMBER 29

(Continued)

12:36 p.m. – 12:40 p.m.

Questions for Oral Posters 5 — 8

12:25 p.m. – 12:29 p.m.

Oral Poster 9 - INVESTIGATING THE KILLING POTENTIAL OF LACTOBACILLI AND T24 UROTHELIAL CELLS IN A CO-CULTURE MODEL

A. M. Johnson¹, C. E. Foust-Wright¹, M. Phillippe², M. M. Weinstein¹, C. Mitchell².

¹Department of Vincent Obstetrics, Gynecology and Reproductive Biology, Vincent Center for Reproductive Biology, Division of Female Pelvic Medicine and Reconstructive Surgery, Massachusetts General Hospital, Harvard Medical School, Boston, MA; ²Department of Vincent Obstetrics, Gynecology and Reproductive Biology, Vincent Center for Reproductive Biology, Massachusetts General Hospital, Harvard Medical School, Boston, MA

12:44 p.m. – 12:48 p.m.

Oral Poster 10 - UNDERSTANDING THE INFLUENCE OF LACTOBACILLI ON HOST IMMUNITY IN WOMEN WITH URINARY TRACT INFECTIONS: ARE LACTOBACILLI THE KEY TO UTI PREVENTION?

A. M. Johnson¹, C. E. Foust-Wright¹, M. Phillippe², M. M. Weinstein³, C. Mitchell².

¹Department of Vincent Obstetrics, Gynecology and Reproductive Biology, Vincent Center for Reproductive Biology, Division of Female Pelvic Medicine and Reconstructive Surgery, Massachusetts General Hospital, Harvard Medical School, Boston, MA; ²Department of Vincent Obstetrics, Gynecology and Reproductive Biology, Vincent Center for Reproductive Biology, Massachusetts General Hospital, Harvard Medical School, Boston, MA; ³Department of Vincent Obstetrics, Gynecology and Reproductive Biology, Division of Female Pelvic Medicine and Reconstructive Surgery, Massachusetts General Hospital, Harvard Medical School, Boston, MA

12:48 p.m. – 12:52 p.m.

Oral Poster 11 - APPLICATION OF A NOVEL PELVIC FLOOR DILATOR DURING ACTIVE LABOR TO PREVENT PELVIC FLOOR INJURIES

F. J. Orejuela¹, W. Lee¹, R. Gandhi¹, L. M. Mack¹, A. Shetty¹, V. George³, H. P. Dietz², S. Ramin¹. ¹Obstetrics and Gynecology, Baylor College of Medicine, Houston, TX; ²University of Sydney, Sydney, NSW, Australia; ³Radiology, Texas Children's Hospital Pavilion for Women, Houston, TX

12:52 p.m. – 12:56 p.m.

Oral Poster 12 - CHANGE IN ANAL SPHINCTER COMPLEX MEASUREMENTS FROM PRE-PREGNANCY TO POSTPARTUM ON DYNAMIC MAGNETIC RESONANCE IMAGING OF PRIMIPAROUS WOMEN

K. V. Meriwether¹, H. E. Richter², M. E. Lockhart². ¹Obstetrics & Gynecology, University of Louisville, Louisville, KY; ²Obstetrics & Gynecology, University of Alabama Birmingham, Birmingham, AL

12:56 p.m. – 1:00 p.m.

Questions for Oral Posters 9 — 12

12:00 a.m. – 1:00 p.m.

Concurrent Session 6 — Surgery-Related Epidemiology — Four Seasons 2-3

Moderators: Eric Sokol, MD; Jennifer Wu, MD, MPH

12:00 p.m. – 12:04 a.m.

Oral Poster 13 - SURGICAL INTERVENTION FOR PELVIC FLOOR DISORDERS DOES NOT INCREASE COMPLICATION RATES IN WOMEN UNDERGOING SURGERY FOR GYNECOLOGIC MALIGNANCIES

K. Bochenska, A. Leader-Cramer, M. G. Mueller, B. Davé, C. Lewicky-Gaupp, K. Kenton. Female Pelvic Medicine and Reconstructive Surgery, Northwestern University, Chicago, IL

12:04 p.m. – 12:08 p.m.

Oral Poster 14 - MID-URETHRAL SLING PROCEDURES IN THE UNITED STATES: READMISSION, REOPERATION, AND COMPLICATIONS

K. Propst¹, D. M. O'Sullivan², P. Tulikangas¹. ¹Urogynecology, Hartford Hospital, Hartford, CT; ²Research Administration, Hartford Hospital, Hartford, CT

12:08 p.m. – 12:12 p.m.

Oral Poster 15 - IMPACT OF PERFORMANCE OF PROPOSED QUALITY MEASURES ON COMPLICATIONS AND REOPERATION FOLLOWING HYSTERECTOMY FOR PROLAPSE

E. Adams-Piper¹, E. L. Whitcomb², N. Guaderrama². ¹Department of Ob/Gyn, Division of Urogynecology, University of California, Irvine, Santa Clara, CA; ²Division of Urogynecology, Department of Ob/Gyn, Southern California Permanente Medical Group, Irvine, CA

12:12 p.m. – 12:16 p.m.

Oral Poster 16 - REPEAT MIDURETHRAL SLING MORE SUCCESSFUL THAN PERIURETHRAL BULKING FOR RECURRENT STRESS URINARY INCONTINENCE FOLLOWING FAILED MIDURETHRAL SLING

K. Buono², A. Alabaster¹, K. Chin³, P. Mallipeddi³. ¹Department of Research, Kaiser Permanente Northern California, Oakland, CA; ²Obstetrics and Gynecology, Kaiser Permanente Santa Clara, Santa Clara, CA; ³Female Pelvic Medicine and Reconstructive Surgery, Kaiser Permanente Santa Clara, Santa Clara, CA

THURSDAY, SEPTEMBER 29*(Continued)*

12:16 p.m. – 12:20 p.m.

Questions for Oral Posters 13 — 16

12:20 p.m. – 12:24 p.m.

Oral Poster 17 - NATURAL HISTORY OF OVERACTIVE BLADDER SYMPTOMS AT THE TIME OF MIDURETHRAL SLING PLACEMENT

B. Davé¹, A. Alverdy¹, K. Kenton¹, M. G. Mueller¹, C. Lewicky-Gaupp¹, A. Leader-Cramer¹, M. Abernethy². ¹Female Pelvic Medicine and Reconstructive Surgery, Northwestern University Feinberg School of Medicine, Chicago, IL; ²Female Pelvic Medicine and Reconstructive Surgery, Johns Hopkins University School of Medicine, Baltimore, MD

12:24 p.m. – 12:28 p.m.

Oral Poster 18 - DOES GENITAL HIATUS SIZE DECREASE AFTER APICAL SUPPORT ALONE: DO WE REALLY NEED A POSTERIOR REPAIR OR PERINEORRHAPHY?

C. M. Carter-Brooks¹, J. L. Lowder², E. S. Lavelle¹, J. P. Shepherd¹. ¹Urogynecology and Reconstructive Surgery, Magee-Women's Hospital of UPMC, PITTSBURGH, PA; ²Urogynecology and Reconstructive Surgery, Washington University at St Louis, St. Louis, MO

12:28 p.m. – 12:32 p.m.

Oral Poster 19 - SAME-DAY DISCHARGE AFTER ROBOTIC-ASSISTED SACROCOLPOPEXY

M. R. Polin, C. K. Kisby, A. G. Visco, N. Y. Siddiqui. Duke University, Durham, NC

12:32 p.m. – 12:36 p.m.

Oral Poster 20 - ASSOCIATION BETWEEN OBESITY AND PERIOPERATIVE MORBIDITY IN OPEN VERSUS LAPAROSCOPIC SACROCOLPOPEXY

G. E. Halder¹, J. L. Salemi², S. Hart³, E. Mikhail¹. ¹OB-GYN, University of South Florida, Tampa, FL; ²Department of Family and Community Medicine, Baylor College of Medicine, Houston, TX; ³Department of Female Pelvic Floor Medicine and Reconstructive Surgery, University of South Florida, Tampa, FL

12:36 p.m. – 12:40 p.m.

Questions for Oral Posters 17 — 20

12:40 p.m. – 12:44 p.m.

Oral Poster 21 - TRENDS IN THE 2012-13 MEDICARE SERVICES PROVIDER USE DATABASE FOR UROGYNECOLOGIC PROCEDURES

D. E. Stone, B. J. Barenberg, S. D. Pickett, D. E. O'Leary, L. Quiroz. Obstetrics and Gynecology, University of Oklahoma Health Science Center, Oklahoma City, OK

12:44 p.m. – 12:48 p.m.

Oral Poster 22 - THE EFFECT OF THE 2011 FDA SAFETY COMMUNICATION ON SURGICAL TREATMENT OF PELVIC ORGAN PROLAPSE AMONG COMMERCIALLY INSURED WOMEN IN THE UNITED STATES

A. G. Sammarco¹, C. W. Swenson¹, N. S. Kamdar¹, E. K. Kobernik¹, B. K. Nallamothu², D. M. Morgan¹. ¹Female Pelvic Medicine and Reconstructive Surgery, University of Michigan, Ann Arbor, MI; ²Internal Medicine, University of Michigan, Ann Arbor, MI

12:48 p.m. – 12:52 p.m.

Oral Poster 23 - DID THE 2011 FDA ADVISORY ON TRANSVAGINAL MESH FOR PROLAPSE IMPACT UTILIZATION OF SLINGS FOR TREATMENT OF URINARY INCONTINENCE?

C. W. Swenson¹, N. S. Kamdar¹, E. K. Kobernik¹, A. G. Sammarco¹, B. K. Nallamothu², D. M. Morgan¹. ¹Obstetrics and Gynecology, University of Michigan, Ann Arbor, MI; ²Internal Medicine, University of Michigan, Ann Arbor, MI

12:52 p.m. – 12:56 p.m.

Oral Poster 24 - HYSTERECTOMY, FRIEND OR FOE WHEN COMBINED WITH LAPAROSCOPIC COLPOPEXY?

A. Leader-Cramer, M. G. Mueller, B. Davé, K. Bochenska, C. Lewicky-Gaupp, K. Kenton. Obstetrics and Gynecology, Division of Female Pelvic Medicine and Reconstructive Surgery, Northwestern University, Chicago, IL

12:56 p.m. – 1:00 p.m.

Questions for Oral Posters 21—24

1:00 p.m. – 2:45 p.m.

Lunch in the Exhibit Hall — Hall A

1:15 p.m. – 2:15 p.m.

PFD Research Foundation Luncheon (Invitation Only) — Room 103

1:15 p.m. – 2:15 p.m.

Brining Nocturia into the Forefront: Heightening Awareness of a Common Condition Supported by Allergan*Four Seasons 2-3*

2:45 p.m. – 4:00 p.m.

General Session 2 — Hall A

Moderators: Kathleen Connell, MD and Kris Strohbe, MD

2:45 p.m. – 2:55 p.m.

Late Breaking Abstract Presentations

2:55 p.m. – 3:05 p.m.

Paper 26 - DIFFERENTIAL RESPONSIVENESS TO SACRAL NEUROSTIMULATION ACROSS THE BLADDER FILLING CYCLE IN RODENTS: LATER-PHASE IS MORE EFFECTIVE FOR INCREASING BLADDER CAPACITY THAN EARLIER-PHASE STIMULATION

B. A. Potts², D. J. Degoski³, J. M. Brooks³, A. C. Peterson², D. E. Nelson⁴, T. S. Brink⁴, M. O. Fraser¹. ¹Surgery / Research and Development, Duke and Durham VA Medical Centers, Durham, NC; ²Surgery, Duke University Medical Center, Durham, NC; ³Institute for Medical Research, Durham, NC; ⁴Global Neuromodulation Research, Medtronic, Inc., Minneapolis, MN

SCIENTIFIC PROGRAM (CONTINUED)

THURSDAY, SEPTEMBER 29

(Continued)

3:05 p.m. – 3:15 p.m.

Paper 27 - THE ASSOCIATION BETWEEN RISK OF LEVATOR ANI DAMAGE AND AGE IN PRIMIPAROUS WOMEN

L. Quiroz¹, G. Rostaminia², S. D. Pickett³, J. Peck⁴, D. E. Stone¹, S. Shobeiri².

¹Obstetrics & Gynecology, University of Oklahoma Health Sciences, Oklahoma city, OK; ²OB/GYN, INOVA Fairfax, Fairfax, VA; ³OB/GYN, Mercy, Edmond, OK; ⁴Biostatistics and Epidemiology, University of Oklahoma Health Sciences, Oklahoma City, OK

3:15 p.m. – 3:25 p.m.

Paper 28 - 2D AND 3D TRANSPERINEAL ULTRASOUND FINDINGS IN WOMEN WITH HIGH PRESSURE VOIDING AFTER MIDURETHRAL SLING PLACEMENT

P. Takacs¹, K. Larson¹, L. A. Scott¹, T. D. CUNNINGHAM², Y. Zhao¹, A. Abuhamad¹.

¹OBGYN/UROGYNECOLOGY, Eastern Virginia Medical School, Norfolk, VA; ²The Center for Health Analytics and Discovery, Eastern Virginia Medical School, Norfolk, VA

3:25 p.m. – 3:35 p.m.

Paper 29 - CYSTOSCOPIC EVALUATION OF URETERAL URINE JETS: A PROSPECTIVE, RANDOMIZED CONTROLLED TRIAL

L. Espallat Rijo¹, L. N. Siff², A. Alas³, S. A. Chadi³, S. Vaish³, M. D. Barber², G. Davila³, E. Hurtado³. ¹Obstetrics and Gynecology, Lehigh Valley Health Network, Bethlehem, PA; ²Obstetrics and Gynecology, Cleveland Clinic Foundation, Cleveland, OH; ³Cleveland Clinic Florida, Weston, FL

3:35 p.m. – 3:50 p.m.

(Papers 30-32 are combined)

Paper 30 - VAGINAL ESTROGEN ALTERS REMODELING OF THE VAGINAL EPITHELIUM AFTER SURGICAL INJURY

C. Ripperda, P. A. Maldonado, J. F. Acevedo, P. Keller, R. A. Word. Obstetrics and Gynecology, UT Southwestern Medical Center, Dallas, TX

Paper 31 - VAGINAL ESTROGEN: A DUAL EDGED SWORD IN POSTOPERATIVE HEALING OF THE VAGINAL WALL

C. Ripperda, P. A. Maldonado, J. F. Acevedo, P. Keller, R. A. Word. Obstetrics and Gynecology, UT Southwestern Medical Center, Dallas, TX

Paper 32 - VAGINAL ESTROGEN ALTERS THE PHENOTYPE OF MACROPHAGES AFTER SURGICAL INJURY

C. Ripperda, P. A. Maldonado, P. Keller, J. F. Acevedo, R. A. Word. Obstetrics and Gynecology, UT Southwestern Medical Center, Dallas, TX

3:50 p.m. – 4:03 p.m.

Video 6 - INTRAOPERATIVE MANAGEMENT OF THE NON-EFFLUXING URETER

R. Sussman¹, L. A. Richter², L. Stamatakis³, C. B. Iglesia². ¹Urology, Georgetown University Hospital, Washington, DC; ²Female Pelvic Medicine and Reconstructive Surgery, MedStar Washington Hospital Center, Washington, DC; ³Urology, MedStar Washington Hospital Center, Washington, DC

4:00 p.m. – 5:00 p.m.

Mesh on Trial: Defendant and Plaintiff Perspectives

Moderators: Pam Moalli, MD, PhD; Miles Murphy, MD, MSPH; Donald Ostergard, MD; Janna Nugent, JD; Derek Potts, JD; Dennis Miller, MD — *Hall A*

5:00 p.m. – 6:00 p.m.

Exhibit Hall Happy Hour — Hall A

7:00 p.m. – 9:00 p.m.

President's Reception (Invitation Only)

Wynkoop Brewery

FRIDAY, SEPTEMBER 30

6:45 a.m. – 7:45 a.m.

Meet the Experts Educational Roundtables Room 201

8:00 a.m. – 8:30 a.m.

General Session 3 — Hall A

Moderators: Deborah Myers, MD; Nicolette Harbach, MD

8:00 a.m. – 8:10 a.m.

Paper 33 - POSTERIOR VAGINAL WALL ANATOMY: IMPLICATIONS FOR SURGICAL REPAIR

P. A. Maldonado, T. I. Montoya, K. S. Carrick, M. Corton. OB/GYN, UT Southwestern Medical Center, Dallas, TX

8:10 a.m. – 8:20 a.m.

Paper 34 - PRE-OPERATIVE GUIDED IMAGERY: A RANDOMIZED TRIAL

E. J. Billquist¹, A. Michelfelder², C. Brincat¹, C. M. Fitzgerald¹, L. Brubaker¹, E. R. Mueller¹. ¹OB GYN, Urology, Loyola University Chicago Stritch School of Medicine, Maywood, IL; ²Family Medicine, Loyola University Chicago Stritch School of Medicine, Maywood, IL

8:20 a.m. – 8:30 a.m.

Paper 35 LONG TERM SYSTEMIC EFFECTS OF VAGINAL MESH: SEEKING THE TRUTH

B. I. Chughtai¹, A. Sedrakyan², J. Mao¹, K. S. Eilber³, J. Clemens⁴, J. T. Anger³. ¹Urology, Weill Cornell Medical College, New York, NY; ²Healthcare Policy and Research, Weill Cornell Medical College, New York, NY; ³Surgery, Division of Urology, Cedars-Sinai Medical Center, Los Angeles, CA; ⁴Division of Neurourology & Pelvic Reconstruction, Urology, University of Michigan, Ann Arbor, MI

FRIDAY, SEPTEMBER 30 (Continued)

8:30 a.m. – 9:00 a.m.

Debate: Refractory Overactive Bladder Treatment: Onabotulinum Toxin Bladder Injection vs. Interstim Direct Sacral Nerve Stimulation — *Hall A*

Moderators: Cindy Amundsen, MD; Karen Noblett, MD; Anthony Visco, MD

9:00 a.m. – 9:30 a.m.

Raymond A. Lee Lecture: Making of a Great Surgeon: Lessons from Ray — *Hall A*
Mark D. Walters, MD

9:30 a.m. – 10:00 a.m.

Break in the Exhibit Hall — *Hall A*

10:00 a.m. – 11:00 a.m.

Concurrent Session 7 — Overactive Bladder (OAB) — *Four Seasons 1*

Moderators: Emily Lukacz, MD

10:00 a.m. – 10:10 a.m.

Paper 36 - COST-EFFECTIVENESS OF ONABOTULINUMTOXINA VS. BEST SUPPORTIVE CARE, ORAL THERAPIES, PERCUTANEOUS TIBIAL NERVE STIMULATION, AND SACRAL NERVE STIMULATION FOR THE TREATMENT OF OVERACTIVE BLADDER FROM THE US PAYER PERSPECTIVE

S. Hessami, MD¹, D. Gultyaev², J. Lister², R. Boer³. ¹New York Medical College, Valhalla, NY; ²LA-SER ANALYTICA, Lörrach, Germany; ³Allergan plc, Irvine, CA

10:10 a.m. – 10:20 a.m.

Paper 37 - THE EFFECT OF PHARMACOLOGIC TREATMENT OF URGENCY URINARY INCONTINENCE ON SLEEP QUALITY AND DAYTIME SLEEPINESS

Q. Warsi¹, A. Huang², J. S. Brown¹, M. Schembri¹, R. Hess³, L. A. Arya⁶, H. E. Richter⁷, C. S. Bradley⁸, R. G. Rogers⁹, D. L. Myers¹⁰, K. Johnson¹¹, W. T. Gregory¹², S. Kraus⁵, K. L. Stone⁴, L. L. Subak¹. ¹Obstetrics, Gynecology & Reproductive Science, University of California, San Francisco, San Francisco, CA; ²General Internal Medicine, UCSF, San Francisco, CA; ³University of Utah, Salt Lake City, UT; ⁴California Pacific Medical Center Research Institute, San Francisco, CA; ⁵Urology, UT Health Science Center, San Antonio, TX; ⁶Obstetrics & Gynecology, University of Pennsylvania, Philadelphia, PA; ⁷Obstetrics & Gynecology, University of Alabama at Birmingham, Birmingham, AL; ⁸Obstetrics & Gynecology, University of Iowa, Iowa City, IA; ⁹Obstetrics & Gynecology, University of New Mexico, Albuquerque, NM; ¹⁰Obstetrics & Gynecology, Brown University, Providence, RI; ¹¹Preventive Medicine, University of Tennessee Health Science Center, Memphis, TN; ¹²Obstetrics & Gynecology, Oregon Health & Science University, Portland, OR

10:20 a.m. – 10:30 a.m.

Paper 38 - HEALTH-RELATED QUALITY OF LIFE FOR ADULT WOMEN BY URINARY INCONTINENCE TYPE AND DEMOGRAPHIC CHARACTERISTICS

L. L. Subak¹, S. Stortz², M. Schembri¹, M. Kuppermann¹, P. S. Goode³, L. Brubaker⁴, E. S. Lukacz⁵, T. C. Chai⁶, S. Kraus⁷, J. W. Kusek⁸. ¹Obstetrics, Gynecology & Reproductive Science, University of California, San Francisco, San Francisco, CA; ²School of Medicine, UCSF, San Francisco, CA; ³Division of Gerontology, Geriatrics, and Palliative Care, University of Alabama at Birmingham, Birmingham, AL; ⁴Obstetrics and Gynecology, Loyola University Chicago Stritch School of Medicine, Chicago, IL; ⁵Division of Female Pelvic Medicine and Reconstructive Surgery, University of California, San Diego, San Diego, CA; ⁶Urology, Yale University, New Haven, CT; ⁷Urology, University of Texas Health Science Center at San Antonio, San Antonio, TX; ⁸National Institute of Diabetes and Digestive and Kidney Diseases, Bethesda, MD

10:30 a.m. – 10:40 a.m.

Paper 39 - LONG-TERM ONABOTULINUMTOXINA TREATMENT RESULTS IN CONSISTENT, DURABLE IMPROVEMENTS IN HEALTH-RELATED QUALITY OF LIFE IN PATIENTS WITH OVERACTIVE BLADDER

P. Pettit¹, A. Magyar², J. Nicandro⁴, D. S. Hale³. ¹Mayo Clinic, Jacksonville, FL; ²Allergan plc, Bridgewater, NJ; ³Urogynecology Associates, Indianapolis, IN; ⁴Allergan plc, Irvine, CA

10:40 a.m. – 10:50 a.m.

Paper 40 - MICRORNAS AS POTENTIAL BIOMARKERS TO PREDICT RISK OF URINARY RETENTION FOLLOWING INTRADETRUSOR ONABOTULINUMTOXIN-A INJECTION

C. Chermansky, B. T. Kadow, M. P. Kashyap, P. Tyagi. Urology, UPMC, Pittsburgh, PA

SCIENTIFIC PROGRAM (CONTINUED)

FRIDAY, SEPTEMBER 30 (Continued)

10:50 a.m. – 11:00 a.m.

Video 7 - BLADDER AUGMENT WITH BLADDER NECK CLOSURE AND CONTINENT STOMA

J. Yeung¹, B. Smith¹, D. Mazloomdoost¹, C. C. Crisp¹, R. N. Pauls¹, S. D. Kleeman¹, A. Mahdy². ¹TriHealth Good Samaritan Hospital, Cincinnati, OH; ²Urology, University of Cincinnati, Cincinnati, OH

10:00 a.m. – 11:00 a.m.

Concurrent Session 8 — Clinic-based Urogynecology, Imaging Technology

Four Seasons 4

Moderators: Megan Schimrf, MD; Emily Whitcomb, MD

10:00 a.m. – 10:04 a.m.

Oral Poster 25 - IS RECTOVAGINAL SEPTUM DEFECT ASSOCIATED WITH THE DEVELOPMENT OF POSTERIOR COMPARTMENT PROLAPSE? 2D AND 3D ENDOVAGINAL ULTRASOUND ASSESSMENT

A. G. Hegde¹, V. C. Aguilar², G. Davila². ¹UPHI, Gurgaon, India; ²Cleveland Clinic Florida, Weston, FL

10:04 a.m. – 10:08 a.m.

Oral Poster 26 - IN VIVO ULTRASOUND CHARACTERISTICS OF VAGINAL MESH KIT COMPLICATIONS

S. Shobeiri¹, M. A. Nihira², L. Quiroz². ¹Ob/Gyn, VCU-Inova Health, Falls Church, VA; ²OBG, OUHSC, Oklahoma City, OK

10:08 a.m. – 10:12 a.m.

Oral Poster 27 - WHAT CHANGES IN POSTPARTUM PELVIC FLOOR FUNCTION AND APPEARANCE ARE ATTRIBUTABLE TO LEVATOR ANI INJURY?

P. S. Fairchild¹, K. Kowalk¹, L. K. Low², J. O. DeLancey¹, D. E. Fenner¹. ¹Department of Obstetrics and Gynecology, University of Michigan, Ann Arbor, MI; ²School of Nursing, University of Michigan, Ann Arbor, MI

10:12 a.m. – 10:16 a.m.

Oral Poster 28 - IS URETHRAL HYPERMOBILITY IN PATIENTS WITH SUI ASSOCIATED WITH LEVATOR ANI MUSCLE SUBDIVISION DEFECTS? 3 DIMENSIONAL ENDOVAGINAL ULTRASOUND ASSESSMENT

A. G. Hegde¹, V. C. Aguilar², G. Davila². ¹UPHI, Gurgaon, India; ²Cleveland Clinic Florida, Weston, FL

10:16 a.m. – 10:20 a.m.

Questions for Oral Posters 25 — 28

10:20 a.m. – 10:24 a.m.

Oral Poster 29 - LONG-TERM SAFETY AND SATISFACTION OF A NOVEL VAGINAL BOWEL CONTROL SYSTEM FOR THE TREATMENT OF ACCIDENTAL BOWEL LEAKAGE IN ADULT WOMEN

M. M. Takase-Sanchez. Female Pelvic Medicine & Reconstructive Surgery, Ventura County ObGyn Medical Group, Ventura, CA

10:24 a.m. – 10:28 a.m.

Oral Poster 30 - OPTIMAL PESSARY CARE: A MODIFIED DELPHI CONSENSUS STUDY

K. O'Dell¹, **G. Hooper²**. ²OB/GYN, UMass Memorial Medical Center, Worcester, MA; ²Urology, University of Alabama, Tuscaloosa, AL

10:28 a.m. – 10:32 a.m.

Oral Poster 31 - MEASURES OF PELVIC FLOOR STRENGTH BY AGE AND PARITY USING THE ELVIE DEVICE

J. H. Coggins¹, R. Cartwright², J. Bergmann³. ¹Chiaro Technology Ltd., London, United Kingdom; ²Faculty of Medicine, School of Public Health, Imperial College London, London, United Kingdom; ³Institute of Biomedical Engineering, University of Oxford, Oxford, United Kingdom

10:32 a.m. – 10:36 a.m.

Oral Poster 32 - THE EFFECT OF COMMONLY PERFORMED EXERCISES ON THE AREA OF THE LEVATOR HIATUS AND THE LENGTH AND STRENGTH OF THE PELVIC FLOOR MUSCLES IN POSTPARTUM WOMEN

L. N. Siff¹, A. J. Hill¹, S. J. Walters², G. Walters³, M. D. Walters¹. ¹Urogynecology, Cleveland Clinic Foundation, Cleveland, OH; ²MetroHealth Medical Center, Cleveland, OH; ³Yoga Alliance, Cleveland, OH

10:36 a.m. – 10:40 a.m.

Questions for Oral Posters 29 — 32

10:40 a.m. – 10:44 a.m.

Oral Poster 33 - DEVELOPMENT OF A FIDELITY INSTRUMENT FOR PELVIC FLOOR PHYSICAL THERAPY FOR FEMALE PELVIC PAIN: A PSYCHOMETRIC VALIDATION STUDY

A. M. Tran⁴, F. Tu⁵, R. K. Kotarinos², M. J. Seitz¹, K. S. Breving¹, Y. Zhou³, S. Iyer⁴, C. Botros⁴, R. Scalabrin Reis⁴, R. Goldberg⁴, J. Tomezsko⁴, S. Botros⁴. ¹Female Pelvic Medicine and Reconstructive Surge, University of Chicago/ NorthShore University Health System, Chicago, IL; ²Pelvic Floor Disorders, IL; ³Statistics, Research Institute/NorthShore University Health System, Evanston, IL; ⁴Division of Female Pelvic Medicine and Reconstructive Surgery, University of Chicago/NorthShore University Health System, Skokie, IL; ⁵Division of gynecologic and minimally invasive surgery, Skokie, IL

10:44 a.m. – 10:48 a.m.

Oral Poster 34 - IS POPQ C-D AN ACCURATE ESTIMATE OF CERVICAL LENGTH? AN EXPLORATORY ANALYSIS
L. X. Caicedo, Z. D. Mulla, V. T. Mallett, T. I. Montoya. Obstetrics and Gynecology, Texas Tech University Health Sciences Center El Paso, El Paso, TX

FRIDAY, SEPTEMBER 30 (Continued)

10:48 a.m. – 10:52 a.m.

Oral Poster 35 - PUTTING POP-Q TO THE TEST: DOES C-D = CERVICAL LENGTH?**L. Dhariwal¹**, K. S. Williams¹, D. F. Shalom¹, L. R. Lind¹, H. A. Winkler¹.¹Urogynecology, Northwell Health, Great Neck, NY; ²Obstetrics & Gynecology, Northwell Health System, New Hyde Park, NY

10:52 a.m. – 10:56 a.m.

Oral Poster 36 - TRANSOBTURATOR SLINGS DEMONSTRATE A WIDE VARIATION IN THEIR ANATOMIC PATHS: A 3D ULTRASOUND STUDY**S. Shobeiri¹**, L. Quiroz², M. A. Nihira².¹Ob/Gyn, VCU-Inova Health, Falls Church, VA; ²OBG, OUHSC, Oklahoma City, OK

10:56 a.m. – 11:00 a.m.

Questions for Oral Posters 33 — 36

10:00 a.m. – 11:00 a.m.

Concurrent Session — 9 Surgery*Four Seasons 2-3***Moderators:** Peter Rosenblatt, MD; Minita Patel, MD

10:00 a.m. – 10:04 a.m.

Oral Poster 37 - IMPACT OF FUNCTIONAL STATUS AND COGNITION IN PATIENTS UNDERGOING PELVIC FLOOR RECONSTRUCTIVE SURGERY**M. D. Nieto**, K. Shei, T. Brueseke, J. Wu. Female Pelvic Medicine and Reconstructive Surgery, University of North Carolina, Chapel Hill, NC

10:04 a.m. – 10:08 a.m.

Oral Poster 38 - RECOVERY TRAJECTORY FOLLOWING LAPAROSCOPIC SACROCOLPOPEXY FOR THE IDENTIFICATION OF MODIFIABLE BEHAVIORS IN WOMEN WITH PELVIC ORGAN PROLAPSE**M. Heit¹**, C. X. Chen², R. Stewart³, J. J. Hamner³, K. L. Rand⁴, J. S. Carpenter⁵. ¹Female Pelvic Medicine and Reconstructive Surgery, Indiana University School of Medicine, Indianapolis, IN; ²Indiana University School of Nursing, Indianapolis, IN; ³Obstetrics and Gynecology, Indiana University School of Medicine, Indianapolis, IN; ⁴Psychology, Indiana University-Purdue University Indianapolis, Indianapolis, IN; ⁵Science of Nursing Care, Indiana University School of Nursing, Indianapolis, IN

10:08 a.m. – 10:12 a.m.

Oral Poster 39 - COMPARING ANTERIOR PROLAPSE REPAIR WITH AND WITHOUT ALLOGRAFT USE: A RANDOMIZED CONTROL TRIAL WITH LONG TERM FOLLOW UP**S. Iyer**, M. J. Seitz, A. M. Tran, S. Botros, J. Tomezsko, P. Sand, Y. Zhou, A. Gafni-Kane. Urogynecology, North Shore University Health System, Skokie, IL

10:12 a.m. – 10:16 a.m.

Oral Poster 40 - OUTCOMES OF RECTOVAGINAL FISTULA REPAIR**J. N. Byrnes¹**, J. Schmitt¹, J. A. Occhino¹, B. M. Faustich¹, K. Mara², A. L. Weaver². ¹Female Pelvic Medicine and Reconstructive Surgery, Mayo Clinic, Rochester, MN; ²Biomedical Statistics and Informatics, Mayo Clinic, Rochester, MN

10:16 a.m. – 10:20 a.m.

Questions for Oral Posters 37 — 40

10:20 a.m. – 10:24 a.m.

Oral Poster 41 - COMPARISON IN OUTCOMES BETWEEN OBSTETRIC AND NON-OBSTETRIC RECTOVAGINAL FISTULA REPAIRS**N. E. Karp¹**, M. B. Berger¹, C. Low², J. O. DeLancey¹, D. E. Fenner¹. ¹Female Pelvic Medicine and Reproductive Surgery, University of Michigan, Ann Arbor, MI; ²Obstetrics and Gynecology, University of Michigan, Ann Arbor, MI

10:24 a.m. – 10:28 a.m.

Oral Poster 42 - SURGEON TRAINING AND REOPERATION FOLLOWING HYSTERECTOMY FOR PELVIC ORGAN PROLAPSE**E. Adams-Piper¹**, N. Guaderrama², E. L. Whitcomb². ¹Department of Ob/Gyn, Division of Urogynecology, University of California, Irvine, Santa Clara, CA; ²Division of Urogynecology, Department of Ob/Gyn, Southern California Permanente Medical Group, Irvine, CA

10:28 a.m. – 10:32 a.m.

Oral Poster 43 - EFFECT OF POPQ STAGE ON SUCCESS OF SACROCOLPOPEXY COMPARED TO UTEROSACRAL LIGAMENT SUSPENSION**E. S. Lavelle¹**, L. E. Giugale¹, D. Winger², W. Li², C. M. CARTER-BROOKS¹, J. P. Shepherd¹. ¹Female Pelvic Medicine and Reconstructive Surgery, Magee-Womens Hospital of UPMC, Pittsburgh, PA; ²Clinical and Translational Science Institute, University of Pittsburgh, Pittsburgh, PA

SCIENTIFIC PROGRAM (CONTINUED)

FRIDAY, SEPTEMBER 30 (Continued)

10:32 a.m. – 10:36 a.m.

Oral Poster 44 - SURGICAL SITE INFECTION OF CLASS I WOUNDS IN GYNECOLOGIC SURGERY: IDENTIFYING INCIDENCE AND RISK FACTORS

M. M. Rieger¹, A. B. White¹, O. Lara¹, H. T. Robertson², K. Sebastian³. ¹Women's Health, Dell Medical School, The University of Texas at Austin, Austin, TX; ²Strategic Planning, Seton Healthcare Family, Austin, TX; ³Dermatology Clinical Studies, Seton Healthcare Family, Austin, TX

10:36 a.m. – 10:40 a.m.

Questions for Oral Posters 41 — 44

10:40 a.m. – 10:44 a.m.

Oral Poster 45 - LEVATOR ANI MUSCLE DEFECTS IN PATIENTS WITH SURGICAL FAILURE

A. M. Wyman, L. Hahn, S. Patton, R. Bassaly, B. Miladinovic, L. Hoyte. Female Pelvic Medicine and Reconstructive Surgery, University of South Florida, Tampa, FL

10:44 a.m. – 10:48 a.m.

Oral Poster 46 - IMPLEMENTATION OF A NEW PROCEDURE: SINGLE PORT ACCESS ROBOTIC-ASSISTED LAPAROSCOPIC SACROCOLPOPEXY VERSUS MULTI-PORT ROBOTIC ACCESS

S. Mustafa-Michael, E. Matanes, R. Lauterbach, L. Lowenstein. Rambam Health Care Campus, Haifa, Israel

10:48 a.m. – 10:52 a.m.

Oral Poster 47 PATIENT REPORTED URINARY SYMPTOMS FOLLOWING REPEAT MIDURETHRAL SLING FOR THE TREATMENT OF RECURRENT STRESS INCONTINENCE: DOES PRIMARY SLING EXCISION MATTER?

S. E. Steele, A. J. Hill, C. Unger. Obstetrics and Gynecology, Cleveland Clinic Foundation, Cleveland, OH

10:52 a.m. – 10:56 a.m.

Oral Poster 48 - OUTCOMES IN PELVIC ORGAN PROLAPSE SURGERY IN WOMEN USING ANTITHROMBOTIC THERAPY

R. High¹, A. Kavanagh², R. Khavari², J. Stewart², D. Antosh³. ¹Obstetrics and Gynecology, Houston Methodist Hospital, Houston, TX; ²Urology, Center for Restorative Pelvic Medicine at Houston Methodist Hospital, Houston, TX; ³Urogynecology, Center for Restorative Pelvic Medicine at Houston Methodist Hospital, Houston, TX

10:56 a.m. – 11:00 a.m.

Questions for Oral Posters 45 — 48

11:15 a.m. – 12:15 p.m.

Concurrent Session 10 — Emerging Science and Novel Technology

Four Seasons 1

Moderators: Leslie Rickey, MD, MPH; Nazema Siddiqui, MD, MHSc

11:15 a.m. – 11:25 a.m.

Paper 41 - EVALUATION OF THE URINARY MICROBIOME OF WOMEN WITH UNCOMPLICATED STRESS URINARY INCONTINENCE

K. J. Thomas-White¹, S. Kliethermes², L. Rickey⁸, E. S. Lukacz³, H. E. Richter⁴, P. Moalli⁵, P. E. Zimmern⁹, P. Norton⁶, J. W. Kusek¹⁰, A. J. Wolfe¹, L. Brubaker⁷. ¹Microbiology and Immunology, Loyola University Chicago, Oak Park, IL; ²Departments of Medicine and Public Health Sciences, Loyola University Chicago, Maywood, IL; ³Department of Reproductive Medicine, University California San Diego, San Diego, CA; ⁴Department of Obstetrics and Gynecology, University of Alabama at Birmingham, Birmingham, AL; ⁵Department of Obstetrics and Gynecology, University of Pittsburgh, Pittsburgh, PA; ⁶Department of Obstetrics and Gynecology, University of Utah, Salt Lake City, UT; ⁷Obstetrics & Gynecology and Urology, Loyola University Chicago, Maywood, IL; ⁸Department of Urology, Yale University, New Haven, CT; ⁹Department of Urology, University of Texas Southwestern Medical Center, Dallas, TX; ¹⁰National Institute of Diabetes and Digestive and Kidney Diseases, National Institutes of Health, Bethesda, MD

11:25 a.m. – 11:35 a.m.

Paper 42 - DIFFERENCES IN THE FEMALE URINARY MICROBIOTA BY CONTINENCE STATUS

T. K. Price¹, E. E. Hilt¹, T. Dune², C. M. Fitzgerald², C. Brincat², L. Brubaker², E. R. Mueller², P. C. Schreckenberger³, A. J. Wolfe¹. ¹Microbiology & Immunology, Loyola University Chicago, Chicago, IL; ²Obstetrics & Gynecology and Urology, Loyola University Chicago, Maywood, IL; ³Pathology, Loyola University Chicago, Maywood, IL

11:35 a.m. – 11:45 a.m.

Paper 43 - MODELING THE BIFURCATION OF THE GREAT VESSELS IN WOMEN RELATIVE TO THE SACRAL PROMONTORY: IMPACT OF AGE

A. Berger¹, S. D. Abramowitch², P. Moalli³. ¹Obstetrics and Gynecology, Thomas Jefferson University Hospital, Philadelphia, PA; ²Swanson School of Engineering, Department of Bioengineering, University of Pittsburgh, Pittsburgh, PA; ³Magee-Womens Research Institute, Department of Obstetrics and Gynecology, University of Pittsburgh School of Medicine, Pittsburgh, PA

11:45 a.m. – 11:55 a.m.

Paper 44 - NGAL SERVES AS A NOVEL BIOMARKER FOR URINARY TRACT INFECTIONS

J. R. Price, C. J. Megli, J. Lim, A. Clark, S. R. Edwards, M. Denman, W. T. Gregory. Female Pelvic Medicine and Reconstructive Surgery Division, Obstetrics and Gynecology Department, Oregon Health & Science University, Portland, OR

11:55 a.m. – 12:05 p.m.

Paper 45 - LEVATOR ANI DEFECT DETECTION COMPARING 3D ULTRASOUND TO 3D MRI

C. S. Calderwood¹, A. Thurmond², A. Holland¹, W. T. Gregory¹. ¹Urogynecology, OHSU, Portland, OR; ²OBGYN, OHSU, Portland, OR

FRIDAY, SEPTEMBER 30 (Continued)

12:05 p.m. – 12:13 p.m.

Video 8 - CYSTOSURE: A NOVEL TECHNIQUE TO MAKE CYSTOSCOPY SAFER, SIMPLER, AND MORE STANDARDIZED**N. Kohli¹**, J. Miklos². ¹Ob/Gyn, Brigham and Women's Hospital, Wellesley, MA; ²Ob/Gyn, Northside Hospital, Atlanta, GA

11:15 a.m. – 12:15 p.m.

Concurrent Session 11 — Clinic-based Urogynecology — Four Seasons 2-3**Moderators:** Dobie Giles, MD, MS; Cheryl Iglesia, MD

11:15 a.m. – 11:19 a.m.

Oral Poster 49 - VIVEVE I: VIVEVE TREATMENT OF THE VAGINAL INTROITUS TO EVALUATE EFFECTIVENESS: RESULTS FROM A RANDOMIZED CLINICAL TRIAL**M. Krychman**, D. Wilkerson. Viveve, Inc., Sunnyvale, CA

11:19 a.m. – 11:23 a.m.

Oral Poster 50 - USE OF A NOVEL FRACTIONAL CO2 LASER FOR THE TREATMENT OF GENITOURINARY SYNDROME OF MENOPAUSE: 1-YEAR OUTCOMES**E. R. Sokol¹**, M. Karam². ¹OB/GYN, Stanford University, Stanford, CA; ²Research division in women's health, The Christ Hospital, Cincinnati, OH

11:23 a.m. – 11:27 a.m.

Oral Poster 51 - DELAY IN SEEKING CARE FOR PELVIC FLOOR DISORDERS AMONG CAREGIVERS**K. Mishra¹**, N. C. Locci-Molina³, B. Chauhan¹, C. A. Raker², V. W. Sung¹. ¹Division of Urogynecology, Women & Infants Hospital, Brown University, Providence, RI; ²Division of Research, Women & Infants Hospital, Providence, RI; ³Warren Alpert Medical School of Brown University, Providence, RI

11:27 a.m. – 11:31 a.m.

Oral Poster 52 - EFFECT OF AN ANTICHOLINERGIC ON COGNITIVE FUNCTION IN POSTMENOPAUSAL WOMEN: A RANDOMIZED TRIAL**E. Geller⁶**, J. Dumond¹, J. M. Bowling⁵, C. Khandelwal², J. Wu⁶, J. Busby-Whitehead⁴, D. I. Kaufer³. ¹School of Pharmacy, UNC-Chapel Hill, Chapel Hill, NC; ²Inpatient Palliative Medicine, Wake Med, Raleigh, NC; ³Neurology, UNC-Chapel Hill, Chapel Hill, NC; ⁴Center for Aging, UNC-Chapel Hill, Chapel Hill, NC; ⁵Gillings School of Public Health, UNC-Chapel Hill, Chapel Hill, NC; ⁶Urogynecology, UNC-Chapel Hill, Chapel Hill, NC

11:31 a.m. – 11:35 a.m.

Questions for Oral Posters 49 — 52

11:35 a.m. – 11:39 a.m.

Oral Poster 53 - SUCCESS OF A REPEATED TINED LEAD TRIAL IN A REFRACTORY OAB POPULATION**K. L. Noblett¹**, J. Mangel², J. Bennett⁷, C. Comiter³, E. T. Bird⁴, T. L. Griebing⁵, S. E. Sutherland⁶, K. J. Berg⁸, F. Kan⁸, S. Siegel⁹. ¹University of California, Riverside, CA; ²MetroHealth Medical Center, Cleveland, OH; ³Stanford University, Stanford, CA; ⁴Scott and White Healthcare, Temple, TX; ⁵University of Kansas, Kansas City, KS; ⁶University of Washington, Seattle, WA; ⁷Female Pelvic Medicine, Grand Rapids, MI; ⁸Clinical, Medtronic, Minneapolis, MN; ⁹Metro Urology, Woodbury, MN

11:39 a.m. – 11:43 a.m.

Oral Poster 54 - WHAT IS THE TRUE RATE OF URINARY RETENTION REQUIRING CATHETERIZATION AFTER BOTOX INJECTION**J. Jamnagerwalla**, J. Houman, D. Patel, J. T. Anger, K. S. Eilber. Urology, Cedars-Sinai, Los Angeles, CA

11:43 a.m. – 11:47 a.m.

Oral Poster 55 - PROSPECTIVE OBSERVATIONS OF PREVALENCE OF PERIPARTUM INCONTINENCE IN NULLIPARAS**R. James¹**, J. Ginsberg², A. Petrikovets¹, A. Khalifa³, M. Ii⁷, A. Mahran³, T. D. Walker⁴, G. Chapman⁵, A. Hijaz⁶. ¹Urology and OB/GYN, University Hospitals Case Medical Center, Cleveland, OH; ²Physiology and Biophysics, Case Western Reserve University Graduate Studies, Cleveland, OH; ³Dept of Urology Lab, University Hospitals Case Medical Center, Cleveland, OH; ⁴University of Akron, Cleveland, OH; ⁵Dept of OB/GYN, University Hospitals Case Medical Center, Cleveland, OH; ⁶Dept. of Urology, University Hospitals Case Medical Center, Cleveland, OH; ⁷Center for Proteomics and Bioinformatics Department of Epidemiology and Biostatistics, School of Medicine CWRU, Cleveland, OH

11:47a.m. – 11:51 p.m.

Oral Poster 56 - ONE AND THE SAME? NOCTURNAL ENURESIS AND OVERACTIVE BLADDER IN THE FEMALE VETERAN POPULATION**C. S. Ninivaggio¹**, H. Riese¹, G. C. Dunivan¹, P. C. Jeppson¹, Y. M. Komesu¹, A. E. Murata², G. H. Murata², R. G. Rogers¹, S. Cichowski². ¹Urogynecology, University of New Mexico, Albuquerque, NM; ²Raymond G. Murphy VA Medical Center, Albuquerque, NM

11:51 a.m. – 11:55 a.m.

Questions for Oral Posters 52 — 55

11:55 a.m. – 11:59 a.m.

Oral Poster 57 - THE PROLAPSE INCONTINENCE SEXUAL QUESTIONNAIRE-IUGA REVISED (PISQ-IR); A NEW SUMMARY SCORE**M. L. Constantine¹**, R. N. Pauls², R. G. Rogers³, T. Rockwood¹. ¹Health Policy and Management, University of Minnesota, Minneapolis, MN; ²Division of Urogynecology and Reconstructive Pelvic Surgery, Good Samaritan Hospital, Cincinnati, OH; ³Division of Urogynecology, University of New Mexico, Albuquerque, NM

SCIENTIFIC PROGRAM (CONTINUED)

FRIDAY, SEPTEMBER 30 (Continued)

11:59 a.m. – 12:03 p.m.

Oral Poster 58 - THE RELATIONSHIP BETWEEN PELVIC ORGAN PROLAPSE AND PAP SMEAR ABNORMALITIES

K. Menhaji, E. R. Cheston, L. A. Arya, P. Levin, H. S. Harvie, U. U. Andy. OBGYN, University of Pennsylvania, Philadelphia, PA

12:03 p.m. – 12:07 p.m.

Oral Poster 59 - IS TESTING FOR OCCULT STRESS URINARY INCONTINENCE (OSUI) PREDICTIVE OF POST-OPERATIVE STRESS URINARY INCONTINENCE IN PATIENTS WITH PELVIC ORGAN PROLAPSE? A LONG TERM (UP TO 10 YEARS) CROSS-SECTIONAL SURVEY

N. Ovtcharenko, M. Harvey, J. Pudwell. Obstetrics and Gynecology, Queen's University, Kingston, ON, Canada

12:07 p.m. – 12:11 p.m.

Oral Poster 60 - COUGH HARDER: THE IMPORTANCE OF PATIENT COUGH EFFORT IN URODYNAMIC TESTING FOR STRESS INCONTINENCE

S. A. Trye, M. Pilkinton, K. Farner, L. R. Lind, H. A. Winkler, D. F. Shalom. OBGYN/Urogynecology, Northwell Health System, Great Neck, NY

12:11 p.m. – 12:15 p.m.

Questions for Oral Posters 57 — 60

11:15 a.m. – 12:15 p.m.

Concurrent Session 12 — Patient/Trainee Education & Knowledge — Four Seasons 4

Moderators: Tyler Muffly, MD; Gena Dunivan, MD

11:15 a.m. – 11:19 a.m.

Oral Poster 61 - RANDOMIZED TRIAL OF AN ENHANCED VISUAL CONSULTATION AND STANDARD CONSULTATION FOR PROLAPSE: IMPACT ON PATIENT SATISFACTION, KNOWLEDGE AND TREATMENT DECISION

C. Liao², J. J. Navas¹, S. Amaya³, T. Yazdany¹. ¹FPMRS, Harbor-UCLA Medical Center, Torrance, CA; ²Kaiser Permanente, Downey, CA; ³Los Angeles Biomedical Research Institute, Los Angeles, CA

11:19 a.m. – 11:23 a.m.

Oral Poster 62 - EVALUATION OF PATIENT PREPAREDNESS FOR SURGERY: A SINGLE BLIND RANDOMIZED CONTROLLED TRIAL

K. Greene¹, L. A. Scott², A. M. Wyman³, L. Hoyte³, S. Hart³, R. Bassaly³. ¹OBGYN, Emory University School of Medicine, Atlanta, GA; ²OBGYN, Eastern Virginia Medical School, Norfolk, VA; ³OBGYN, University of South Florida, Tampa, FL

11:23 a.m. – 11:27 a.m.

Oral Poster 63 - THE INFLUENCE OF SUPPLEMENTAL PATIENT EDUCATION VIDEO ON OVERWEIGHT AND OBESE WOMEN WITH PELVIC FLOOR DISORDERS

T. E. Padilla, M. A. Barker. University of South Dakota Sanford School of Medicine, Sioux Falls, SD

11:27 a.m. – 11:31 a.m.

Oral Poster 64 - VALIDATION OF A VAGINAL HYSTERECTOMY TASK TRAINER: USING STANDARDIZED ASSESSMENT TOOLS FOR EVERY LEVEL OF EXPERIENCE

D. R. Malacarne¹, C. Lam¹, K. L. Ferrante¹, D. Szyld², V. T. Lerner¹. ¹Obstetrics and Gynecology, NYU, New York, NY; ²Emergency Medicine, NYU Langone Medical Center, New York, NY

11:31 a.m. – 11:35 a.m.

Questions for Oral Posters 61 — 64

11:35 a.m. – 11:39 a.m.

Oral Poster 65 - A URINARY TRACT INJURY REPAIR SIMULATION MODEL

M. E. Florian-Rodriguez, S. Balgobin. Female Pelvic Medicine and Reconstructive Surgery, UT Southwestern, Dallas, TX

11:39 a.m. – 11:43 a.m.

Oral Poster 66 - SELF-PERCEPTION OF SURGICAL APTITUDE DOES NOT ALIGN WITH ACTUAL TECHNICAL ABILITY: A ROLE FOR SURGICAL APTITUDE TESTING USING SIMULATION

M. T. Nguyen¹, J. Y. Mei², V. N. Vu³, J. Chrin⁴, C. Tarnay¹. ¹Obstetrics and Gynecology, Female Pelvic Medicine and Reconstructive Surgery, UCLA David Geffen School of Medicine, Los Angeles, CA; ²UCLA David Geffen School of Medicine, Los Angeles, CA; ³UCLA School of Public Health, Los Angeles, CA; ⁴Surgery, Center for Advanced Surgical and Interventional Technology, UCLA, Los Angeles, CA

11:43 a.m. – 11:47 a.m.

Oral Poster 67 - PELVIC FLOOR DISORDER KNOWLEDGE IN WOMEN INVOLVED IN HIGH-INTENSITY INTERVAL TRAINING AND WEIGHT TRAINING EXERCISE

L. Hahn, A. M. Wyman, S. Patton, R. Bassaly. Department of Female Pelvic Medicine and Reconstructive Surgery, University of South Florida, Tampa, FL

11:47 a.m. – 11:51 a.m.

Oral Poster 68 - RESIDENT EDUCATION IN FEMALE PELVIC MEDICINE AND RECONSTRUCTIVE SURGERY

K. Propst¹, D. M. O'Sullivan², A. C. Steinberg¹, C. LaSala¹. ¹Urogynecology, Hartford Hospital, Hartford, CT; ²Research Administration, Hartford Hospital, Hartford, CT

FRIDAY, SEPTEMBER 30 (Continued)

11:51 a.m. – 11:55 a.m.

Questions for Oral Posters 65 — 68

11:55 a.m. – 11:59 a.m.

Oral Poster 69 - PATIENTS' KNOWLEDGE OF AND ATTITUDE TOWARDS ROBOTIC SURGERY FOR PELVIC ORGAN PROLAPSE: A FELLOWS' PELVIC RESEARCH NETWORK MULTICENTER STUDY

C. M. Chu¹, A. Agrawal², D. Mazloomdoost³, B. J. Barenberg⁴, T. Dune⁵, M. Pilkinton⁶, E. E. Weber LeBrun⁷, L. A. Arya¹, H. S. Harvie¹. ¹Urogynecology, Hospital of the University of Pennsylvania, Philadelphia, PA; ²Urogynecology, University of Louisville, Louisville, KY; ³Urogynecology, TriHealth/Good Samaritan Hospital, Cincinnati, OH; ⁴Urogynecology, University of Oklahoma Health Science Center, Oklahoma City, OK; ⁵Urogynecology, Loyola University, Chicago, IL; ⁶Urogynecology, North Shore-LIJ Health System, Great Neck, NY; ⁷Urogynecology, University of Florida, Gainesville, FL

11:59 a.m. – 12:03 p.m.

Oral Poster 70 - INFLUENCE OF LOWER URINARY TRACT SYMPTOMS ON PROFICIENCY OF URINARY INCONTINENCE KNOWLEDGE

S. D. Delpe², A. Russo¹, J. Yeh³, E. McKay¹, L. S. Lundsberg¹, J. Chao¹, D. Miller¹, M. K. Guess¹. ¹ObGyn, Yale University, New Haven, CT; ²Urology, Yale University, New Haven, CT; ³ObGyn, Danbury Hospital, Danbury, CT

12:03 p.m. – 12:07 p.m.

Oral Poster 71 - DOES ANXIETY PREDICT SUBJECTIVE SHORT-TERM OUTCOME OF PROLAPSE REPAIR SURGERY?

A. Collins¹, P. Doyle¹, E. Duecy¹, T. G. Lee¹, L. Lipetskaia¹, P. Wigent¹, E. Poleshuck², G. M. Buchsbaum¹. ¹Obstetrics and Gynecology, University of Rochester Medical Center, Rochester, NY; ²Psychiatry, University of Rochester Medical Center, Rochester, NY

12:07 p.m. – 12:11 p.m.

Oral Poster 72 - PRIMARY CARE PROVIDERS' EXPERIENCE, MANAGEMENT, AND REFERRAL PATTERNS REGARDING PELVIC FLOOR DISORDERS; A NATIONAL SURVEY

D. Mazloomdoost, C. C. Crisp, S. D. Kleeman, R. N. Pauls. OBGYN, TriHealth/Good Samaritan Hospital, Cincinnati, OH

12:11 p.m. – 12:15 p.m.

Questions for Oral Posters 69 — 72

12:15 p.m. – 2:00 p.m.

Lunch in the Exhibit Hall — Hall A

12:30 p.m. – 1:30 p.m.

Industry Supported Education Transitioning from a Transobturator (TO) to a Single Incision Sling (SIS), Supported by Coloplast — Room 205, 207

12:45 p.m. – 1:45 p.m.

Industry Supported Education Evidence-based Medicine — Patient-based Care, Supported by Medtronic*Room 201, 203*

12:30 p.m. – 2:00 p.m.

Past Presidents Luncheon (Invitation Only)*Room 103*

2:00 p.m. – 3:00 p.m.

J. Marion Sims Lecture: Best Evidence and Biggest Challenges of Global Urogynecologic Registries — Hall A

3:15 p.m. – 4:30 p.m.

Concurrent Session 13 — Basic Science & Related Clinical — Four Seasons 1

Moderators: Marsha Guess, MD; Amanda White, MD

3:15 p.m. – 3:25 p.m.

Paper 47 - STRUCTURE-FUNCTION RELATIONSHIP OF HUMAN EXTERNAL ANAL SPHINCTER

A. M. Stewart¹, M. S. Cook², M. C. Esparza¹, K. Y. Dyer³, M. Alperin¹. ¹Reproductive Medicine, UCSD, San Diego, CA; ²Integrative Biology and Physiology, University of Minnesota, Minneapolis, MN; ³Female Pelvic Medicine and Reconstructive Surgery, Kaiser Permanente, San Diego, CA

3:25 p.m. – 3:35 p.m.

(Papers 48 & 49 are combined)

Paper 48 - THE EFFECT OF CESAREAN DELIVERY ON HIATAL DIMENSION IN SQUIRREL MONKEYS

J. S. Joyce¹, V. Tran¹, M. Reyes¹, J. M. Gendron¹, J. Ruiz², W. Larsen¹, T. J. Kuehl¹. ¹Baylor Scott and White Healthcare, Temple, TX; ²The University of Texas MD Anderson Cancer Center, Bastrop, TX

Paper 49 - THE ASSOCIATIONS OF PELVIC ORGAN PROLAPSE, AGE AND PARITY WITH HIATAL DIMENSIONS IN SQUIRREL MONKEYS

J. S. Joyce¹, V. Tran¹, M. Reyes¹, J. M. Gendron¹, J. Ruiz², W. Larsen¹, T. J. Kuehl¹. ¹Baylor Scott and White Healthcare, Temple, TX; ²The University of Texas MD Anderson Cancer Center, Bastrop, TX

3:35 p.m. – 3:48 p.m.

Paper 50 - THE MYTH: IN VIVO DEGRADATION OF POLYPROPYLENE MESHES

S. F. Thames², J. B. White¹, K. Ong¹. ¹Exponent, Inc., Philadelphia, PA; ²USM School of Polymers, Hattiesburg, MS

3:48 p.m. – 3:58 p.m.

Paper 51 - PREVENTING MESH PORE COLLAPSE THROUGH AUXETIC GEOMETRIES: A COMPREHENSIVE EVALUATION VIA COMPUTATIONAL MODELING

K. Knight¹, P. Moalli², S. D. Abramowitch¹. ¹Musculoskeletal Research Center, Department of Bioengineering, University of Pittsburgh, Pittsburgh, PA; ²Department of Obstetrics and Gynecology and Reproductive Sciences at Magee-Womens Hospital, Magee-Womens Research Institute, Pittsburgh, PA

3:58 p.m. – 4:07 p.m.

Video 9 - 12 MONTH IN-DWELLING INTRAVESICAL AIR-FILLED BALLOON REMOVAL FOLLOWED BY NEW BALLOON REPLACEMENT PER THE SUCCESS CLINICAL TRIAL PROTOCOL
D. M. Elser. Women's Health Institute of Illinois, Oak Lawn, IL

SCIENTIFIC PROGRAM (CONTINUED)

FRIDAY, SEPTEMBER 30 (Continued)

3:15 p.m. – 4:30 p.m.

Concurrent Session 14 — Epidemiology/ “Big Data” — *Four Seasons 4*

Moderators: Rebecca Rogers, MD; Leslee Subak, MD

3:15 p.m. – 3:25 p.m.

Paper 52 - ROLE OF OBESITY ON ROUTE OF HYSTERECTOMY IN A NATIONWIDE SAMPLE

M. Meister¹, Y. Yan², J. L. Lowder³.

¹Ob/Gyn, Barnes Jewish Hospital/
Washington University in St. Louis,
Saint Louis, MO; ²Surgery, Washington
University in St. Louis, Saint Louis, MO;
³Ob/Gyn, Washington University in St.
Louis, Saint Louis, MO

3:25 p.m. – 3:35 p.m.

Paper 53 - UTILIZATION OF APICAL VAGINAL SUPPORT PROCEDURES AT TIME OF HYSTERECTOMY PERFORMED FOR UTEROVAGINAL PROLAPSE: A NATIONAL ESTIMATE

W. T. Ross¹, M. Meister¹, J. P. Shepherd⁴,
M. A. Olsen³, J. L. Lowder². ¹Obstetrics
and Gynecology, Barnes-Jewish
Hospital/Washington University in St.
Louis, Saint Louis, MO; ²Obstetrics and
Gynecology, Washington University in
St. Louis, Saint Louis, MO; ³Medicine
and Surgery, Washington University in
St. Louis, Saint Louis, MO; ⁴Obstetrics,
Gynecology, and Reproductive Medicine,
University of Pittsburgh, Pittsburgh, PA

3:35 p.m. – 3:45 p.m.

Paper 54 - READMISSION AND REOPERATION AFTER SURGERY FOR PELVIC ORGAN PROLAPSE

E. D. Hokenstad¹, E. B. Habermann², A.
E. Glasgow², J. A. Occhino¹. ¹Obstetrics
and Gynecology, Mayo Clinic, Rochester,
MN; ²Robert D. and Patricia E. Kern
Center for the Science of Health Care
Delivery, Mayo Clinic, Rochester, MN

3:45 p.m. – 3:55 p.m.

Paper 55 - TEMPORAL RELATIONSHIP BETWEEN RECTOCELE AND DEFECATORY SYMPTOMS

V. L. Handa¹, K. M. Townsend¹, J. L.
Blomquist², A. Munoz¹. ¹Johns Hopkins,
Baltimore, MD; ²Gyn, Greater Baltimore
Medical Center, Baltimore, MD

3:55 p.m. – 4:05 p.m.

Paper 56 OBESITY AND PERIOPERATIVE COMPLICATIONS IN PELVIC RECONSTRUCTIVE SURGERY IN 2013: ANALYSIS OF THE NATIONAL INPATIENT SAMPLE

T. Pratt¹, C. O. Hudson, K. Greene.
Gynecology & Obstetrics, Emory School
of Medicine, Atlanta, GA

4:05 p.m. – 4:11 p.m.

Tip and Trick 1 - SALINE INFUSION VAGINOGRAPHY IS AN ACCURATE NOVEL METHOD FOR DETECTION OF URETEROVAGINAL FISTULA

P. Escobar¹, O. Rotenberg¹, J. Kaplan¹,
P. Dar¹, T. A. Fligelman². ¹Obstetrics,
Gynecology, and Women's Health, Albert
Einstein College of Medicine/Montefiore
Medical Center, New York, NY; ²Female
Pelvic Medicine and Reconstructive
Surgery, Albert Einstein College of
Medicine/Montefiore Medical Center,
New York, NY

4:11 p.m. – 4:20 p.m.

Video 10 - REVISION OF INTRAVESICAL MESH

S. Patton¹, L. Hahn, A. M. Wyman, L.
Wiegand, R. Bassaly, S. Hart. University
of South Florida, Tampa, FL

4:20 p.m. – 4:33 p.m.

Video 11 - ROBOTIC EXCISION OF A MID-URETHRAL SLING EROSION IN THE SUPERIOR ASPECT OF THE URETHRA

A. Shariati¹. Urogynecology, FRMIU,
Coconut Creek, FL

3:15 p.m. – 4:30 p.m.

Concurrent Session 15 — General Clinical & Surgical Care — *Four Seasons 2-3*

Moderators: Heather van Raalte, MD;
Anthony Visco, MD

3:15 p.m. – 3:26 p.m.

Video 12 - SURGICAL TECHNIQUES FOR URETHRAL RECONSTRUCTION USING A VAGINAL FLAP

D. R. Malacarne¹, A. Drain, V. W. Nitti.
Urology, NYU Langone Medical Center,
New York, NY

3:26 p.m. – 3:36 p.m.

Paper 58 - OBSTETRICAL ANAL SPHINCTER INJURIES (OASIS): DOES OBSTETRICAL CARE PROVIDER MATTER? A QUALITY ASSURANCE STUDY IN ONTARIO

K. Pizzuto¹, M. Harvey, J. Pudwell, G.
Smith. Obstetrics and Gynecology,
Queen's University, Kingston, ON, Canada

3:36 p.m. – 3:46 p.m.

Paper 59 - PRE-OPERATIVE OBESITY IS A RISK FACTOR FOR FAILURE OF MID- URETHRAL SLING SURGERY AT 5 YEARS

E. A. Brennand¹, S. Tang¹, C. Birch¹,
M. Robert¹, S. Ross². ¹Obstetrics &
Gynecology, University of Calgary,
Calgary, AB, Canada; ²Obstetrics &
Gynecology, University of Alberta,
Edmonton, AB, Canada

3:46 p.m. – 3:56 p.m.

Paper 60 - FEMALE SEXUAL DYSFUNCTION: A SYSTEMATIC REVIEW OF OUTCOMES ACROSS VARIOUS TREATMENT MODALITIES

J. M. Weinberger², J. Houman¹, J.
Jamnagerwalla¹, J. T. Anger¹. ¹Urology,
Cedars-Sinai, Los Angeles, CA;
²Urology, University of Los Angeles,
Los Angeles, CA

3:56 p.m. – 4:06 p.m.

Paper 61 - PATIENT SATISFACTION AND INFORMED CONSENT FOR SURGERY

J. L. Hallock¹, R. Rios², V. L. Handa¹.
¹Gyn/Ob-FPMRS, Johns Hopkins
University, Baltimore, MD; ²Internal
Medicine, Johns Hopkins Bayview
Medical Center, Baltimore, MD

FRIDAY, SEPTEMBER 30 (Continued)

4:06 p.m. – 4:16 p.m.

Paper 62 - PROSPECTIVE OUTCOMES OF A PELVIC FLOOR REHABILITATION PROGRAM INCLUDING VAGINAL ELECTROGALVANIC STIMULATION FOR URINARY, DEFECATORY AND PELVIC PAIN SYMPTOMS**J. Schmitt**, R. Singh, R. Harvey-Springer, F. Fick, J. A. Occhino. Gynecologic Surgery, Mayo Clinic, Rochester, MN

4:16 p.m. – 4:22 p.m.

Tip and Trick 2**AN INEXPENSIVE ANATOMICALLY-BASED MODEL FOR SACROCOLPOPEXY TRAINING SIMULATION****K. P. Norris**, M. E. Florian-Rodriguez, S. Balgobin. Female Pelvic Medicine and Reconstructive Surgery, University of Texas Southwestern, Dallas, TX

4:22 p.m. – 4:33 p.m.

Video 13 - SMALL BOWEL OBSTRUCTION FOLLOWING INTERNAL HERNIATION THROUGH PERITONEAL DEFECT: A RARE COMPLICATION OF LAPAROSCOPIC SACROCOLPOPEXY**L. Hahn**, A. M. Wyman, S. Patton, L. Hoyte, S. Hart. Department of Female Pelvic Medicine and Reconstructive Surgery, University of South Florida, Tampa, FL

7:00 p.m. – 11:00 p.m.

AUGSOME: Taste of Denver*Hard Rock Pavillion, Glenarm Place between 15th and 16th Street***SATURDAY, OCTOBER 1**

9:00 a.m. – 10:00 a.m.

General Session 4 — Hall A**Moderators:** Charles Nager, MD; Kimberly Kenton, MD, MS

9:00 a.m. – 9:10 a.m.

Paper 63 - A RANDOMIZED, DOUBLE BLIND, PLACEBO CONTROLLED TRIAL OF TOPICAL ANESTHETIC USE IN PESSARY MANAGEMENT: THE TAP STUDY**S. K. Taege**¹, E. R. Mueller¹, L. Brubaker¹, C. M. Fitzgerald¹, W. Adams², C. Brincat¹.¹Obstetrics and Gynecology, Loyola University Chicago Stritch School of Medicine, Maywood, IL; ²Departments of Medicine and Public Health Sciences, Loyola University Chicago Stritch School of Medicine, Maywood, IL

9:10 a.m. – 9:20 a.m.

Paper 64 - INCREASING AGE IS A RISK FACTOR FOR DECREASED POSTPARTUM PELVIC FLOOR STRENGTH**L. Quiroz**⁴, S. D. Pickett², J. Peck¹, G. Rostaminia³, S. Shobeiri³. ¹Biostatistics and Epidemiology, University of Oklahoma Health Sciences, Oklahoma city, OK; ²OB/GYN, Mercy, Edmond, OK; ³OB/GYN, INOVA, Fairfax, VA; ⁴OB/GYN, University of Oklahoma Heal Sciences, Oklahoma City, OK

9:20 a.m. – 9:30 a.m.

Paper 65 - THE TRAJECTORY OF RECOVERY IN WOMEN AT HIGH RISK FOR BIRTH INJURY**P. S. Fairchild**¹, K. Kowalk¹, L. K. Low², J. O. DeLancey¹, D. E. Fenner¹. ¹Department of Obstetrics and Gynecology, University of Michigan, Ann Arbor, MI; ²School of Nursing, University of Michigan, Ann Arbor, MI

9:30 a.m. – 9:40 a.m.

Paper 66 - EVALUATING THE IMPACT OF OPERATIVE TEAM TURNOVER ON SURGICAL AND PATIENT OUTCOMES**L. E. Giugale**, S. Sears, E. S. Lavelle, C. M. CARTER-BROOKS, J. P. Shepherd. Obstetrics, Gynecology and Reproductive Sciences, Magee-Womens Hospital, Pittsburgh, PA

9:40 a.m. – 9:50 a.m.

Paper 67 - THE DECLINE IN PHYSICAL PERFORMANCE AND ONSET OF SARCOPENIA IS ASSOCIATED WITH THE DEVELOPMENT OF URINARY INCONTINENCE IN OLDER COMMUNITY DWELLING WOMEN**C. Y. Parker-Autry**⁶, D. K. Houston¹, J. Rushing², H. E. Richter³, L. L. Subak⁴, A. M. Kanaya⁵, S. Kritchevsky¹. ¹Gerontology, Wake Forest School of Medicine, Winston-Salem, NC; ²Biostatistical Sciences, Wake Forest School of Medicine, Winston-Salem, NC; ³Ob/Gyn, University of Alabama at Birmingham, Birmingham, AL; ⁴Ob/Gyn, University of California - San Francisco, San-Francisco, CA; ⁵Internal Medicine, Epidemiology, Biostatistics, University of California - San Francisco, San-Francisco, CA; ⁶Ob/Gyn, Urology, Wake Forest School of Medicine, Winston-Salem, NC

9:50 a.m. – 9:59 a.m.

Video 14 - ROBOTIC EXCISION OF SUTURE ENTRAPMENT OF THE LUMBOSACRAL TRUNK**A. Dave**, J. Yi, J. Magrina. Gynecologic Surgery, Mayo Clinic, Phoenix, AZ

10:00 a.m. – 1:00 a.m.

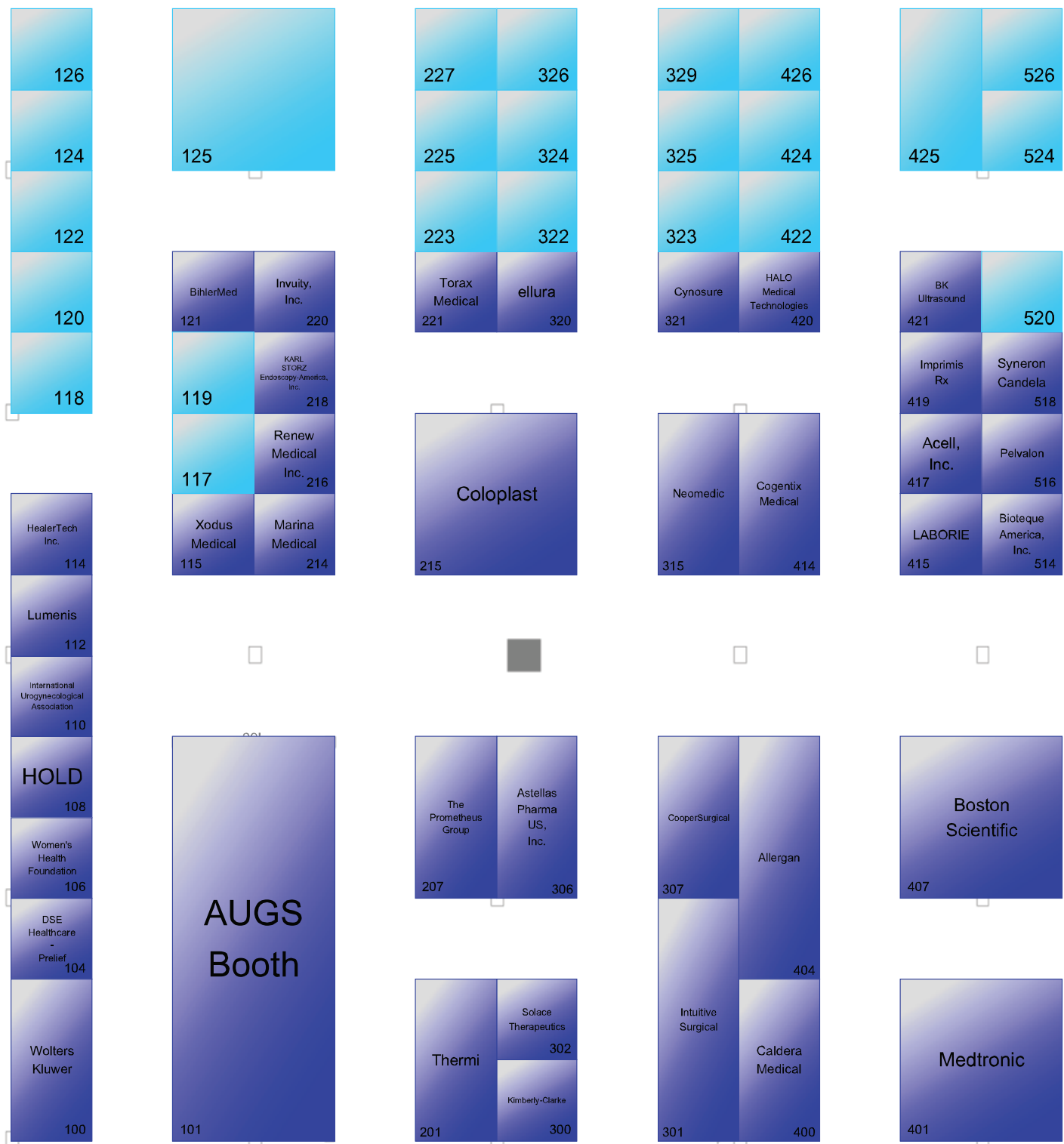
Live Surgery Session — Hall A

Tristi W. Muir, MD; Paul M. Magtibay, MD; Roger Goldberg, MD, MPH; Dionysios Veronikis, MD; Vincent Lucente, MD, FACOG

1:00 p.m.

Adjourn

EXHIBIT HALL FLOOR PLAN



EXHIBITOR LISTING

Company	Booth Number	Company	Booth Number
ACell Inc.	417	Japan Society of Pop Surgery.....	122
Avanced Tactile Imaging, Inc.	322	KARL STORZ Endoscopy-America, Inc.....	218
Allergan	404	Kimberly-Clark.....	300
Astellas Pharma US, Inc.	306	LABORIE	415
American Urogynecologic Society (AUGS).....	101	Lumenis	112
BihlerMed	121	Marina Medical Instruments.....	214
Bioteque America, Inc.	514	Medspira, LLC.....	118
BK Ultrasound.....	421	Medtronic, Inc.	401
Boston Scientific.....	407	Neomedic International, S.L.	315
Caldera Medical.....	400	Nino - Med	108
Cogentix Medical	414	Pelvalon.....	516
Coloplast	215	The Prometheus Group	207
CooperSurgical	307	Renew Medical Inc.....	216
Cynosure	321	Sciton	117
Desert Harvest.....	524	Shionogi, Inc.....	323
DSE Healthcare Solutions - PRELIEF.....	104	Solace Therapeutics	302
ellura (by Trophikos).....	320	Syneron Candela.....	518
Ethicon US, LLC	119	Teva Women's Health.....	120
Focus Medical	526	Thermi.....	201
Halo Medical Technologies.....	420	Tissue Regenix	422
Hawaiian Moon.....	520	Torax Medical Inc.....	221
Healer Tech Inc.	114	UT DBA Pathnotics.....	419
International Urogynecological Association (IUGA)	110	Wolters Kluwer	100
Intuitive Surgical	301	Women's Health Foundation	106
Invuity, Inc.....	220	Xodus Medical, Inc.....	115

EXHIBITOR DESCRIPTIONS

ACELL

Booth 417

6640 Eli Whitney Drive
Columbia, Maryland 21046
800-826-2926
www.acell.com

MatriStem® Pelvic Floor Matrix (PFM) products are medical devices that maintain and support a healing environment through constructive remodeling. Comprised of naturally-occurring urinary bladder matrix (UBM), MatriStem maintains an intact epithelial basement membrane. MatriStem is appropriate for anterior, posterior, and apical repairs.

ADVANCED TACTILE IMAGING

Booth 322

ALLERGAN

Booth 404

2525 Dupont Drive
Irvine, California 92612
714-246-4500
www.allergan.com

Allergan (NYSE: AGN) is a unique, global pharmaceutical company focused on developing, manufacturing, and commercializing high quality generic and innovative branded pharmaceutical products for patients around the world. The company has approximately 30,000 employees worldwide and maintains global headquarters in Dublin, Ireland. For more information, visit www.Allergan.com.

ASTELLAS PHARMA US, INC.

Booth 306

One Astellas Way
Northbrook, Illinois 60062
800-888-7704
www.astellas.us

Astellas Pharma US, Inc., is a U.S. affiliate of Tokyo-based Astellas Pharma Inc. Astellas is a pharmaceutical company dedicated to improving the health of people around the world through the provision of innovative and reliable pharmaceutical products.

AMERICAN UROGYNECOLOGIC SOCIETY (AUGS)

Booth 101

1100 Wayne Avenue, Suite 670
Silver Spring, Maryland 20910
301-273-0570
www.augs.org

The American Urogynecologic Society (AUGS), founded in 1979, is the premier society dedicated to research and education in urogynecology, and the detection, prevention, and treatment of female pelvic floor disorders. As the leader in Female Pelvic Medicine and Reconstructive Surgery, AUGS promotes the highest quality patient care through excellence in education, research, and advocacy. Visit AUGS in Booth 101 for information on membership, the PFD Registry, and patient resources.

BIHLERMED

Booth 121

85 Industrial Drive, Building B
Phillipsburg, New Jersey 08865
908-329-9137
www.bihlermed.com

At BihlerMed, our continuing mission is to design, develop, and produce advanced medical devices. We are the developer of the Scintillant Surgical lighting line, the first battery powered LED surgical light, and have a growing portfolio of new products. With access to 35+ years of manufacturing experience, let BihlerMed be your partner in innovation.

BIOTEQUE AMERICA, INC

Booth 514

1025 Junction Avenue
San Jose, California 95131
800-889-9008
Bioteque.com

Bioteque America focus is on women's health and conservative treatments of the pelvic floor. We carry a complete and unique line of vaginal pessaries and individual pessary fitting sets. Please stop by booth # 514 for special pricing and learn how to get free fitting sets.

BK ULTRASOUND

Booth 421

8 Centennial Drive
Peabody, Massachusetts 01960
978-326-1300
www.bkultrasound.com

BK Ultrasound is a global leader in pelvic floor ultrasound. Our unique multi-compartment solution lets you image the anterior, middle, and posterior compartments allowing you to see the pelvic floor architecture in superb detail and high-resolution 3D. The bk3000 and Flex Focus ultrasound systems deliver excellent image quality, mobility, and flexibility.

BOSTON SCIENTIFIC

Booth 407

300 Boston Scientific Way
Marlborough, Massachusetts 01752
508-683-4000
www.bostonscientific.com

As the pelvic floor landscape continues to change, Boston Scientific remains committed to the treatment of pelvic floor disorders and to you and your patients. We are anchored in our guiding principle to provide innovative products that are supported with clinical data and offer robust professional programs to advance the quality of care. We stand by the quality of our products and our overall commitment to women's health.

CALDERA MEDICAL

Booth 400

5171 Clareton Drive
Agoura Hills, California 91301
818-483-7614
www.calderamedical.com

Caldera Medical is a Women's Health medical device company which focuses on improving the quality of life for women. Caldera Medical develops, manufactures, and markets differentiated surgical implants for the treatment of Stress Urinary Incontinence (Desara® Sling System) and Pelvic Organ Prolapse (Vertessa® Lite).

COGENTIX MEDICAL

Booth 414

5420 Feltl Road
Minnetonka, Minnesota 55343
www.cogentixmedical.com

Cogentix Medical products include Urgent® PC, a low-risk, office-based OAB treatment that provides clinically significant and durable results; EndoSheath® Systems that combine state-of-the-art endoscopic technology with a sterile, disposable microbial barrier; and Macroplastique® bulking agent for adult female SUI. Cogentix was formed through a merger of Uroplasty and Vision-Sciences.

COLOPLAST

Booth 215

1601 West River Road
Minneapolis, Minnesota 55411
800-258-3476
www.coloplast.us

With a 50-year legacy of commitment and dedication to female pelvic health, Coloplast offers innovative solutions for the treatment of SUI and POP, featuring products such as the Altis® Single Incision Sling System, Aris® and Supris® full length slings, Restorelle Smartmesh®, the Meridian Vaginal Positioning System, and the Digitex® Suture Delivery System.

COOPERSURGICAL

Booth 307

75 Corporate Drive
Trumbull, Connecticut 06611
203-601-5200
www.coopersurgical.com

Since our founding in 1990, CooperSurgical has researched, developed, and manufactured a wide range of trusted brands that have advanced the standard of care for families. Our diversified portfolio of products and services focuses on women's health, fertility, and diagnostics. Come visit us at 307 to interact with our industry leading solutions and experience why CooperSurgical is at the forefront of women's healthcare.

CYNOSURE

Booth 321

5 Carlisle Road
Westford, Massachusetts 01886
www.cynosure.com

MonaLisa Touch is an innovative laser that delivers fractional CO2 laser energy to the vaginal wall tissue to improve gynecologic health. Fast, gentle and effective, the therapy provides both immediate and lasting relief of symptoms related to declines in estrogen levels. Thousands of women have been successfully treated since 2008.

DESERT HARVEST

Booth 524

PO Box 1412
Hillsborough, North Carolina 27278
www.desertharvest.com

Since 1993 Desert Harvest has been manufacturing nutritional supplements and skin care products based on aloe vera. Desert Harvest was the first to discover the connection between super-concentrated freeze-dried aloe vera capsules and Interstitial Cystitis/Bladder Pain Syndrome/Chronic Pelvic Pain. Please visit the Desert Harvest booth to learn more about their research.

DSE HEALTHCARE SOLUTIONS - PRELIEF

Booth 104

105 Fieldcrest Avenue, Suite 502A
Edison, New Jersey 08817
732-417-1870
www.prelief.com

DSE Healthcare Solutions offers products that provide solutions for specialty health concerns. Each member of the leadership team has extensive experience developing products that meet consumer needs and bringing them to market. A common experience they share is that they were all executives at Johnson & Johnson. PRELIEF®, is a dietary supplement, that takes the acid out of food so patients can avoid bladder discomfort caused by acid foods.

ELLURA (BY TROPHIKOS)

Booth 320

1212 Collier Road
Atlanta, Georgia 30318
877-421-7160
www.myllura.com

Only ellura® contains 36 mg of PAC (proanthocyanidins) in one daily capsule and is proven effective as prophylactic therapy for patients with recurrent urinary tract infections (UTIs). Visit our booth to learn more about our non-antibiotic alternative for UTI prevention.

ETHICON US, LLC

Booth 119

4545 Creek Road
Cincinnati, Ohio 45242
www.ethicon.com

Ethicon US, LLC brings to market a broad range of innovative surgical products, solutions and technologies used to treat some of today's most prevalent medical issues, such as: colorectal and thoracic conditions, spine and cardiovascular conditions, cancer, obesity and other conditions requiring general surgery. Learn more at www.ethicon.com.

FOCUS MEDICAL

Booth 526

EXHIBITOR DESCRIPTIONS

HALO MEDICAL TECHNOLOGIES

Booth 420

1805 Faulk Road
Wilmington, Delaware 19810
www.halomedtech.com

Halo Medical Technologies leads the world in the design of next generation medical ultrasound systems for specialist physicians treating pelvic floor disorders. Our intelligent and efficient tools enable more reliable diagnosis right at the doctor's office and automatically generates precise, comprehensive and EMR-ready reports. We aim to create new possibilities for patients suffering from debilitating quality-of-life conditions by supplying never-before-available, accurate, accessible and affordable diagnostics at the patient's local point-of-service.

HAWAIIAN MOON

Booth 520

HEALER TECH, INC.

Booth 114

1101 North Fair Oaks Avenue, Unit 212
Sunnyvale, California 94089
802-777-5780
www.healertech.com

We are a smart fitness device startup company based in Silicon Valley, California. Our company was founded in 2016. Our vision is to optimize people's fitness, exercise and healthcare experience by new technology.

INTERNATIONAL UROGYNECOLOGICAL ASSOCIATION (IUGA)

Booth 110

2030 M Street NW, Suite 701
Washington, District of Columbia 20036
1-202-733-3234
www.iuga.org

IUGA is the international leader in the urogynecological field and is dedicated to global advancement of urogynecological knowledge and patient care through education and the promotion of research. IUGA publishes the International Urogynecology Journal (IJU), conducts education programs worldwide, advocates regarding urogynecology, develops consensus terminology, and produces patient education materials.

INTUITIVE SURGICAL

Booth 301

1266 Kifer Road, Building 101
Sunnyvale, California 94086
925-413-5984
www.intuitivesurgical.com

Intuitive Surgical is the global leader in minimally invasive, robotic-assisted surgery. Its da Vinci® Surgical System – with a 3D-HD vision system and EndoWrist® instrumentation – enables surgeons to offer a minimally invasive approach for a range of complex procedures. da Vinci is used in more than 3,500 hospitals around the world.

INVUITY, INC.

Booth 220

444 DeHaro Street, Suite 100
San Francisco, California 94107
www.invuity.com

Invuity is a medical technology company focused on pioneering the use of advanced photonics to provide surgeons with improved direct visualization of surgical cavities during open minimally invasive and minimal access procedures. Our patented intelligent photonics technology enables superior illumination and visualization and is designed to overcome the significant limitation of traditional surgical lighting options in the operating room.

JAPAN SOCIETY OF POP SURGERY

Booth 122

KARL STORZ ENDOSCOPY-AMERICA, INC.

Booth 218

2151 East Grand Avenue
El Segundo, California 90245
800-421-0837
www.karlstorz.com

KARL STORZ Endoscopy-America has remained a leading manufacturer for over 70 years, providing reusable endoscopy products and related technologies that emphasize patient care, including the latest urogynecologic procedures. Beginning with our legendary optical technologies as well as precision instrumentation, KARL STORZ offers a comprehensive range of diagnostic and operative solutions.

KIMBERLY-CLARK

Booth 300

2300 County Road II
Neenah, Wisconsin 54956
www.kimberly-clark.com

Kimberly-Clark is a global consumer goods company with leading brands sold in over 175 countries. At Kimberly-Clark, developing and acquiring new technologies and strategic partnerships has enabled the creation of innovative products and design solutions across our personal care, consumer tissue, healthcare, and business-to-business segments.

LABORIE

Booth 415

400 Avenue D, Suite 10
Williston, Vermont 05495
800-522-6743
www.laborie.com

LABORIE takes great pride in improving patients' lives through innovations in pelvic floor and gastroenterology diagnostic and treatment options. LABORIE's product line includes solutions for Urodynamics, Anorectal Manometry, Uroflowmetry, Ultrasound, Pelvic Floor Rehabilitation, and Gastroenterology. For more information on LABORIE's global product platform and educational course offerings please visit www.laborie.com.

LUMENIS

Booth 112

2033 Gateway Place
San Jose, California 95110
408-764-3824
www.lumenis.com

Achieve the Master's Touch in Women's Health with the AcuPulse™ DUO CO2 laser: FemTouch™ for improved Vaginal Health; FiberLase™ CO2 fiber for laparoscopic/robotic procedures aimed at improving fertility and pain; Micromanipulators for precise treatment of intraepithelial neoplasia; and SurgiTouch™ scanning software for application-guided surgical automation.

MARINA MEDICAL INSTRUMENTS

Booth 214

MEDSPIRA, LLC

Booth 118

2718 Summer Street NE
Minneapolis, Minnesota 55413
www.medspira.com

Medspira partners with leading medical institutions to develop and market cost-effective diagnosis and treatment solutions for a variety of medical conditions. Medspira's mcompass is a portable anorectal manometry system utilized by private offices and hospitals alike. We are happy to be able to include ultrasound, EMG testing, and our FDA approved biofeedback pelvic floor retraining module on the same hardware platform. The mcompass is a great solution to help in the diagnosis and treatment of patients with fecal incontinence and constipation.

MEDTRONIC, INC.

Booth 401

710 Medtronic Parkway
Minneapolis, Minnesota 55432
770-689-7054
www.medtronic.com

Through innovation and collaboration, Medtronic improves the lives and health of millions of people each year. Products include the InterStim System, providing Sacral Neuromodulation for Bladder Control and Bowel Control and the NURO System, providing Percutaneous Tibial Neuromodulation for Overactive Bladder. Learn more about our technology, services and solutions at Medtronic.com.

NEOMEDIC INTERNATIONAL, S.L.

Booth 315

Carrer del Maestrat, 41
Terrassa-Barcelona, Spain 08225
+34-937-80-45-05
www.neomedic.com

Neomedic International "The Continence Company" provides you with the right product for every case. Female Remeex: readjustable system for Female Urinary Incontinence, for ISD and Recurrent patients. Perfect results in non easy patients. Male Remeex: Unique lifetime re-adjustable system for male Urinary Incontinence. Excellent results, low complications, and physiological urination. Needleless: Single incision TOT, proven three years same results as a TOT without groin pain. The only single incision sling with completed FDA 522 Postmarket Surveillance Study. Kim: Knottless Incontinence Mesh: the tissue friendly mesh for urethral support. Microelastic and Macrorigid. Uplift: The laparoscopic sacrocolpopexy mesh with promontory fixation system. Anchorsure: reliable least invasive anchoring system. Neomedic Int, "the continence company."

NINO-MED

Booth 315

PELVALON

Booth 516

923 Thompson Place
Sunnyvale, California 94085
408-768-1814
www.eclipsesystem.com

The Eclipse System is an innovative, non-surgical therapy offering immediate results for women experiencing loss of bowel control. Pelvalon's development of Eclipse originated from Stanford University's Biodesign program, a collaboration between the schools of Medicine and Engineering. Eclipse is currently available in limited geographies across the US.

EXHIBITOR DESCRIPTIONS

THE PROMETHEUS GROUP

Booth 207

1 Washington Street, Suite 303
Dover, New Hampshire 03820
800-442-2325
www.theprogrp.com

New! WiCAM Wireless Digital Endoscope Camera. Advanced platforms for pelvic muscle rehabilitation, urodynamics, uroflowmetry, anorectal manometry, 360 endorectal ultrasound for fecal incontinence, and supporting consumables and accessories.

RENEW MEDICAL, INC.

Booth 216

1065 East Hillsdale Boulevard
Foster City, California 94404
888-987-2929
www.renew-medical.com

Renew Medical announces the US launch of the Renew Insert, an innovative silicone rectal insert device now available by prescription for patients with Accidental Bowel Leakage (ABL), otherwise termed fecal incontinence. Renew Inserts are safe, easy-to-use and reduce ABL by 82% with high patient satisfaction.

SCITON

Booth 117

925 Commercial Street
Palo Alto, California 94303
650-493-9155
www.sciton.com

Sciton, Inc., is a privately owned medical device company that provides advanced laser and light sources to medical professionals worldwide. The Sciton JOULE™ is the world's first laser and light platform to accommodate three distinct delivery modes for medical, aesthetic, and surgical applications: arm, fiber, and BBL. The newest product to use HFL technology, diVa™, continues to expand the broad range of JOULE platform capabilities to address a woman's most intimate challenges.

SOLACE THERAPEUTICS

Booth 302

SOLACE THERAPEUTICS

Booth 302

135 Newbury Street
Framingham, Massachusetts 07101
508-283-1200
www.solacctx.com

Solace Therapeutics is an emerging women's health company focused on a revolutionary non-surgical office based treatment for unexpected bladder leaks, the primary symptom of female Stress Urinary Incontinence (SUI). SUI, the most prevalent form of incontinence among women, affects an estimated one in three adult women. Solace is dedicated to improving the quality of life for women whose daily life is disrupted by their incontinence.

SYNERON CANDELA

Booth 518

530 Boston Post Road
Wayland, Massachusetts 01778
916-541-6287
www.syneron-candela.com

Syneron Candela is a leading global aesthetic device company with a comprehensive product portfolio. The company's technology enables physicians to provide advanced solutions for a broad range of applications including body contouring, hair removal, tattoo removal, wrinkle reduction, and the treatment of vascular/pigmented lesions, acne, leg veins, and cellulite.

TEVA WOMEN'S HEALTH

Booth 120

THERMI

Booth 201

8304 Esters Boulevard, Suite 890
Irving, Texas 75063
866-981-5017
www.thermi.com

Thermi™ is a leading global manufacturer of Temperature Controlled Radiofrequency technology. The company's flagship product is ThermiRF®, a platform technology that uses temperature as an endpoint for various minimally and noninvasive aesthetic applications (ThermiTight®, ThermiRase®, ThermiDry®, ThermiSmooth® Face, ThermiVa®). Thermi also offers the Thermi250 device as the newest innovative RF for body.

TISSUE REGENIX

Booth 422

2611 North Loop 1604 W, Suite 201
San Antonio, Texas, 78258
www.tissueregenixUS.com

Tissue Regenix presents DermaPure®, a decellularized human dermis that signals a new direction for healing. It distinguishes itself as a 99% DNA free, pristine extracellular matrix retaining intact vascular-like structures which stimulates revascularization. DermaPure attracts the cells that signal the body's biologic response for healing while limiting fibrosis.

TORAX MEDICAL, INC.**Booth 221**

4188 Lexington Avenue North
Shoreview, Minnesota 55126
651-361-8900
www.toraxmedical.com

Torax Medical's core technology applies the unique properties of specialized magnets to precisely restore the barrier function of sphincters. Our technology platform, Magnetic Sphincter Augmentation, uses the attraction forces to augment weak or defective sphincter muscles to treat Gastroesophageal Reflux Disease (GERD) and Accidental Bowel Leakage (fecal or bowel incontinence).

UT DBA PATHNOTICS**Booth 419**

5000 Overton Plaza, Suite 130
Fort Worth, Texas 76109
www.utlabconsultants.com

Universal Triumph provides a variety of superior laboratory services with a focus in Urology and Women's Health diagnostic testing. Our new Guidance UGx™ test utilizes next generation molecular assay technology to provide significantly improved results over traditional urine culture to aid in the diagnosis and treatment of your UTI patients.

WOLTERS KLUWER**Booth 100**

2001 Market Street
Philadelphia, Pennsylvania 19103
215-521-8300
www.lww.com

Wolters Kluwer is a leading publisher of medical, health and science publications. We offer an extensive selection of medical books, journals, and electronic media for doctors, nurses, specialized clinicians and students. Please visit booth 100 to browse our comprehensive product line.

WOMEN'S HEALTH FOUNDATION**Booth 106**

632 West Deming Place
Chicago, Illinois 60614
773-305-8200
www.womenshealthfoundation.org

Women's Health Foundation (WHF), a nationally focused nonprofit, was founded in 2004 by Missy Lavender. WHF's mission is to improve the pelvic health and wellness of women and girls through grassroots educational initiatives, consumer products, wellness programs, and related research.

XODUS MEDICAL, INC.**Booth 115**

702 Prominence Drive
New Kensington, Pennsylvania 15068
724-337-5500
www.xodusmedical.com

Xodus Medical is making surgery safer with The Pink Pad XL advanced patient positioning system — the innovative, clinically-preferred product for increasing patient safety in Trendelenburg. Prevent unwanted patient movement, while protecting skin from HAPUs and nerves from pressure related injury. See the full line of patient safety offerings.



PFDWEEK2017

OCTOBER 3-7 | RHODE ISLAND CONVENTION CENTER | PROVIDENCE, RI



AUGS LEADERSHIP

BOARD OF DIRECTORS

President



Douglass S. Hale, MD
Methodist Hospital of Indiana

President Elect



Halina M. Zyczynski, MD
University of Pittsburgh School of Medicine

Vice President



Charles R. Rardin, MD, FACOG, FACS
Alpert Medical School of Brown University

Treasurer



Raymond T. Foster, Sr., MD, MS, MHSc
University of Missouri School of Medicine

Immediate Past President



Amy Rosenman, MD
Geffen School of Medicine at UCLA

DIRECTORS AT LARGE



Rony A. Adam, MD
Vanderbilt University



Sandra Culbertson, MD
University of Chicago



Patrick J. Culligan, MD
Weill Cornell Medical College



Shawn A. Menefee, MD
Kaiser Permanente, San Diego



Mikio A. Nihira, MD, MPH
University of Oklahoma Health Sciences Center



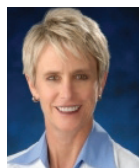
Adam C. Steinberg, DO
Hartford Hospital

PFD Research Foundation Chair



Sandra R. Valaitis, MD
University of Chicago Hospital

PFD Research Foundation Vice Chair



Karen L. Noblett, MD
University of California Riverside School of Medicine

Ex-officio Member



Michelle Zinnert, CAE
Executive Director

AWARD RECIPIENTS

JACK ROBERTSON LIFETIME ACHIEVEMENT AWARD



Alfred Bent, MD

Thursday, September 29 | 9:30 a.m.

AUGS' most prestigious award is presented periodically to an individual who has had a lifetime of outstanding achievements in the field of Female Pelvic Medicine and Reconstructive Surgery and has served as a role model through service, basic or clinical research, and teaching.

Dr. Bent's profound contributions to the society include serving as President and Editor of the FPMRS Journal. Under his leadership, the journal was acquired by AUGS, changed its title to *FPMRS*, and was added to MEDLINE in March of 2012. Dr. Bent is well respected as a trainer of clinicians and an advocate for the field.

ROBIN HAFF RESEARCH AWARD



Gisselle Zazueta-Damian

Thursday, September 29 | 9:30 a.m.

This award is presented annually to an individual in recognition of outstanding and sustained contribution to female pelvic floor disorders research. The Robin Haff Research Award recognizes the important role that clinical research nurses and research coordinators play in the clinical research process. Without dedicated and committed research staff, high quality research would not be possible.

Gisselle Zazueta-Damian is recognized for her remarkable contributions to the specialty and commitment to research. She has been working as a Senior Research Coordinator for both the Urinary Incontinence Treatment and the Pelvic Floor Disorders Networks (PFDN) at Kaiser Permanente, San Diego, since 2004. As a testament to her collegiality, knowledge of responsible research conduct, and rapport with patients, Ms. Zazueta-Damian was elected as the Chair of the PFDN research coordinators last year. She is credited with helping UCSD/Kaiser Permanente, San Diego maintain its outstanding track record of successful recruitment of a large number of subjects and low attrition rate.

PFD RESEARCH FOUNDATION DONOR OF THE YEAR AWARD



Kristinell Keil, MD

Thursday, September 29 | 9:30 a.m.

The PFD Research Foundation presents the Donor of the Year Award to an individual in recognition of commitment to the Foundation's mission of transforming the lives of women through the support of innovative and effective research that advances the prevention, treatment, and cure of female pelvic floor disorders.

Dr. Keil, a past Foundation Chair, is recognized for her generous donations to the PFD Research Foundation, as well as her commitment and creative approach to fundraising.

RESIDENT SCHOLAR AWARDS

This program funds third-year residents who have demonstrated an interest in Female Pelvic Medicine and Reconstructive Surgery to attend the AUGS Annual Scientific Meeting and experience the current research initiatives going on within the field. Each scholar receives a \$1,500 award to cover travel, hotel accommodations, and meeting registration.



Kathryn Barletta

*Brigham & Women's
/ Massachusetts
General Hospital*



Evelyn Hall

*Northwestern
University*



Payton Schmidt

University of Michigan



Emily Slopnick

*University Hospitals –
Case Medical Center*



Gabriela Halder

*University of South
Florida*



Sarah Steele

Cleveland Clinic

FOUNDATION GRANT RECIPIENTS

PFD RESEARCH FOUNDATION AND ICA IC/PBS RESEARCH GRANT

Kristin Jacobs, MD, Women and Infants Hospital

The Female Urinary Microbiome in Interstitial Cystitis/Painful Bladder Syndrome Patients

PFD RESEARCH FOUNDATION FELLOW RESEARCH AWARD

Brian Linder, MD, Mayo Clinic

Prediction of pelvic organ prolapse surgery outcomes with preoperative pessary use: a case-cross over study

JUNE ALLYSON MEMORIAL FUND RESEARCH AWARD

Jennifer Bickhaus, MD, Duke University School of Medicine

Evaluation of host immune and extracellular matrix responses to sacrocolpopexy mesh on differential tension



PFD RESEARCH FOUNDATION

The Official Research Foundation of AUGS

Every contribution to the PFD Research Foundation builds a stronger future for Female Pelvic Medicine and Reconstructive Surgery.

Advancing Research • Developing Future Researchers
Transforming Lives • Funding Young Investigators

Corporate Sponsors

Allergan Foundation
Interstitial Cystitis Association
Medtronic, Inc.

Legacy Circle Members

Linda Brubaker, MD, MS
Andrew P. Cassidenti, MD
Vincent Lucente, MD, FACOG

Donor of the Year



Kristinell Keil, MD

The PFD Research Foundation sincerely thanks the following individuals for their generous support.

**Gifts received between October 14, 2015 – August 25, 2016.*

\$1,000 - \$4,999

Cindy Amundsen	Margie Kahn	Craig Middleton	Charles Nager	Amy Rosenman	Kristene Whitmore
Andrew Cassidenti	Kristinell Keil	Elizabeth Mueller	Karen Noblett	Ryan Stratford	Halina Zyczynski
Roger Goldberg	Vincent Lucente	Deborah Myers	Peter Rosenblatt	Conrad Sweeting	
Cheryl Iglesia	Timothy McKinney				

\$500 - \$999

Matthew Barber	Douglass Hale	Gretchen Lentz	Mikio Nihira	Marc Toglia
C. Sage Claydon	Yuko Komesu	Emily Lukacz	Osvaldo Padron	Sandra Valaitis
Sandra Culbertson	Felicia Lane	Shawn Menefee	Rebecca Rogers	
Renee Edwards	Wilma Larsen	John Nealon	Nazema Siddiqui	

\$250 - \$499

Vivian Aguilar	Amanda Clark	W. Thomas Gregory	Sangeeta Mahajan	David Schleicher
Kathryn Arendt	Autumn Edenfield	Lai-yet Lam	Karen McShane	Elisa Trowbridge
Renee Caputo	Sean Francis	Jerry Lowder	Lisa Peacock	Emily Weber LeBrun
Christopher Chermansky	Chiara Ghetti	Karl Lubert	Laura Plaskon	

\$100 - \$249

Mary Ackenbom	Keisha Dyer	Peter Jeppson	Kate Meriwether	David Rahn	Bernard Taylor
Raymond Bologna	Mark Ellerkmann	Padma Kandadai	Debra Miller	Beri Ridgeway	May Wakamatsu
Sylvia Botros-Brey	Elisabeth Erekson	Michael Karram	Dennis Miller	Barbara Robinson	Stacey Wallach
Catherine Bradley	Tola Fashokun	Linda Kiley	Daniel Morgan	Henley	Emily Whitcomb
Heidi Brown	Dee Fenner	Charles Kilpatrick	Margaret Mueller	Mitchell Schuster	Kyle Wohlrab
Lauren Cadish	Kimberly Ferrante	Anna Kirby	Peggy Norton	Jaime Sepulveda	Jennifer Wu
Sarah Cichowski	Michael Flynn	Elizabeth Kotarinos	Amy O'Boyle	Rebecca Shaffer	Johnny Yi
Jeffrey Clemons	Raymond Foster	Rhonda Kotarinos	Dena O'Leary	Jonathan Shepherd	Michelle Zinnert
Thad Denehy	Dobie Giles	Una Lee	Stephanie Pickett	Sohail Siddiqui	
Alexis Dieter	Karen Gold	Veronica Mallet	Mark Preston	Laura Skoczylas	
Gena Dunivan	Cara Grimes	Jessica McKinney	Lieschen Quiroz	Adam Steinberg	

Under \$100

Emily Adams-Piper	Maria Florian	Jessica Hammett	Leise Knoepp	Brian Nelson	Gary Sutkin
Heather Barbier	Lisa Friendly	Anne Hardart	William Kobak	Jennifer Normoyle	Michelle Takase-
Jessica Bracken	Anthony Gaddi	Gerardo Heredia-	Joseph Kowalski	Sallie Oliphant	Sanchez
Jamie Chao	Ene George	Melero	Pedro Maldonado	Andrey Petrikovets	Jasmine Tan-Kim
Madeline Dick	Laura Gephart	Melissa Huggins	Mamta Mamik	Samantha Pulliam	Kurian Thott
Michael Douso	Elliot Greenberg	Colleen Hughes	Carlos Medina	Allison Rovillos	Michael Vardy
Keith Downing	Joy Greer	Stephanie Jacobs	Jeannine Miranne	Nancy Spector	Stephen Wassinger
Carolyn Drake	Bogdan Grigorescu	Karl Jallad	Bob Moreland	Katherine Stevenson	Tajnoos Yazdany
Tanaka Dune	Noelani Guaderrama	Keisha Jones	Stephanie Morgan	Jeff Stone	Sallis Yip
Janelle Evans	Cynthia Hall	Gregg Kanter	Abraham Morse	Vivian Sung	Dani Zoorob

AUGS LEADERSHIP

PAST PRESIDENTS

Amy Rosenman, MD (2014–2015)
Charles Nager, MD (2013–2014)
Anthony G. Visco, MD (2012–2013)
Matthew D. Barber, MD, MHS (2011–2012)
Deborah Myers, MD (2010–2011)
Rebecca Rogers, MD (2009–2010)
Dee Fenner, MD (2008–2009)
Kris Strohbehn, MD (2007–2008)
Ingrid Nygaard, MD (2006–2007)
Joseph Montella, MD (2005–2006)
Stephen Young, MD (2004–2005)
Michael Aronson, MD (2003–2004)
Linda Brubaker, MD (2002–2003)
Peggy Norton, MD (2001–2002)
W. Conrad Sweeting, MD (2000–2001)
Nicolette Horbach, MD (1999–2000)
Mickey Karram, MD (1998–1999)
Richard Bump, MD (1997–1998)
Robert Shull, MD (1996–1997)
John O. L. DeLancey, MD (1995–1996)
Alfred Bent, MD (1994–1995)
John Higgins, MD (1993–1994)
Charles deProsse (1992–1993)
J. Thomas Benson (1991–1992)
David A. Richardson (1990–1991)
Ernest I. Kohorn (1989–1990)
Henry A. Thiede (1988–1989)
Richard O. Davis, MD (1987–1988)
J. Andrew Fantl, MD (1986–1987)

Gynecologic Urology Society

R. Peter Beck, MD (1985–1986)
Donald R. Ostergard, MD (1984–1985)
Douglas J. Marchant, MD (1983–1984)
W. Glenn Hurt, MD (1982–1983)
Hugh M. Shingleton, MD (1981–1982)
C. Paul Hodgkinson, MD (1980–1981)
Jack R. Robertson, MD (1979–1980)

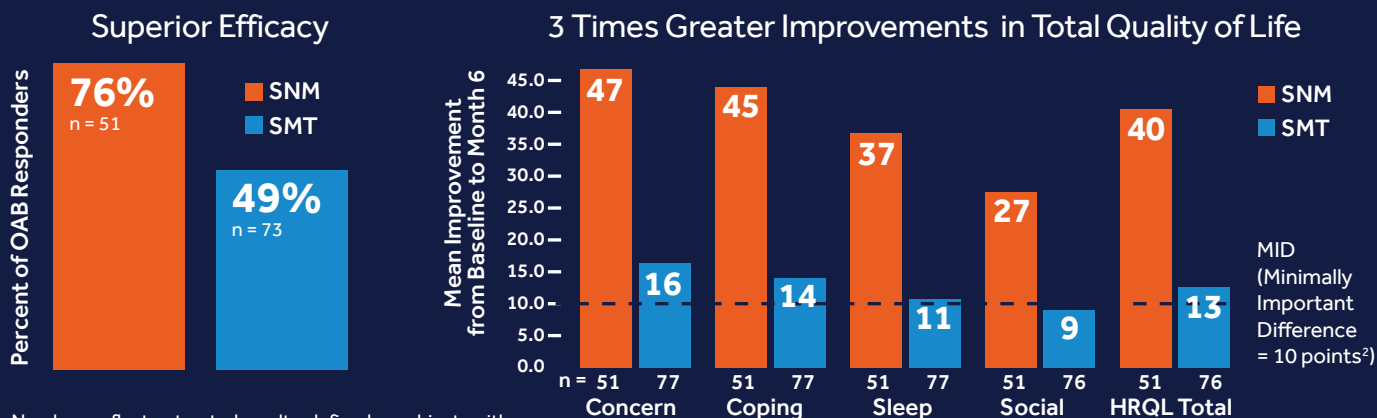
AUGS STAFF

Michelle Zinnert, CAE, Executive Director
Colleen Hughes, Associate Executive Director
Nui Dhepyasuwan, Research and Quality Director
Jessica Eustice, Development Director
Mitra Aminrazavi, Research Program Manager
Tristan Wood, Membership and Community Program Manager
Lindsay Smith, Membership Assistant
Cynthia Stubits, Event Services Manager
Ame Petry, Event Services Coordinator
Cristina Adames, Event Services Associate
Amanda O'Kane, Marketing and Communications Manager
Jayne Corso, Marketing and Communications Coordinator
Lauren Lawson, Education Manager
William Reed, Education Senior Coordinator
Adrienne Fredrick, Education Senior Associate
Jeffrey Reeves, Staff Accountant

EVIDENCE. OUTCOMES. INSIGHT.

Sacral Neuromodulation for Bladder Control

OUTPERFORMS MEDICATIONS AT 6 MONTHS*¹



Numbers reflect as treated results, defined as subjects with diary data at baseline and 6 months ($p=0.002$). Intent to treat results, which include all randomized subjects, are 61% for Sacral Neuromodulation (SNM) and 42% for standard medical therapy (SMT) ($p=0.02$).

*anticholinergic/antimuscarinic

Device-related adverse events occurred in 31% of SNM patients, and medication-related adverse events occurred in 27% of SMT patients.

DEMONSTRATES SUSTAINED EFFICACY AT 12 MONTHS

85% of SNM Patients Achieved Clinical Success^{†3}
For patients with diary data at baseline and 12 months ($n=220$).

Clinical success defined as 50% improvement from baseline.

† Numbers reflect completers analysis. Modified completers analysis which includes subjects who either had a baseline and 12-month evaluation, or withdrew early due to device-related reasons and considered failures, are 82% at 12 months.

Device-related adverse events occurred in 30% of subjects post-implant. The most common device-related AEs were undesirable change in stimulation, implant site pain, and implant site infection.

Medtronic
Further, Together

1. Siegel S, Noblett K, Mangel J, et al. Results of a prospective, randomized, multicenter study evaluating sacral neuromodulation with InterStim® Therapy compared to standard medical therapy at 6-months in subjects with mild symptoms of overactive bladder. *Neurol Urodyn*. 2015;34(3):224-230.
2. Coyne KS, Matza LS, Thompson CL, Kopp ZS, Khullar V. Determining the importance of change in the overactive bladder questionnaire. *J Urol*. 2006;176(2):627-632.
3. Noblett K, Siegel S, Mangel J, et al. Results of a Prospective, Multicenter study evaluating quality of life, safety, and efficacy of sacral neuromodulation at twelve months in subjects with symptoms of overactive bladder. *Neurol Urodyn*. 2016;35(2):246-51.

Indications for Use:

InterStim® Therapy for Urinary Control is indicated for the treatment of urinary retention and the symptoms of overactive bladder, including urinary urge incontinence and significant symptoms of urgency-frequency alone or in combination, in patients who have failed or could not tolerate more conservative treatments.

The following Warning applies only to InterStim Therapy for Urinary Control:

Warning: This therapy is not intended for patients with mechanical obstruction such as benign prostatic hypertrophy, cancer, or urethral stricture.

InterStim® Therapy for Bowel Control is indicated for the treatment of chronic fecal incontinence in patients who have failed or are not candidates for more conservative treatments.

Contraindications for Urinary Control and for Bowel Control: Diathermy. Patients who have not demonstrated an appropriate response to test stimulation or are unable to operate the neurostimulator.

Warnings/Precautions/Adverse Events: For **Urinary Control:** Safety and effectiveness have not been established for bilateral stimulation; pregnancy, unborn fetus, and delivery; pediatric use under the age of 16; or for patients with neurological disease origins such as multiple sclerosis. For **Bowel Control:** Safety and effectiveness have not been established for bilateral stimulation; pregnancy, unborn fetus, and delivery; pediatric use under the age of 18; or for patients with progressive, systemic neurological diseases. For **Urinary Control and for Bowel Control:** The system may be affected by or adversely affect cardiac devices, electrocautery, defibrillators, ultrasonic equipment, radiation therapy, MRI, theft detectors/ screening devices. Adverse events include pain at the implant sites, new pain, lead migration, infection, technical or device problems, adverse change in bowel or voiding function, and undesirable stimulation or sensations, including jolting or shock sensations. Patients should be assessed preoperatively for the risk of increased bleeding. For full prescribing information, please call Medtronic at 1-800-328-0810 and/or consult Medtronic's website at www.medtronic.com. Product technical manual must be reviewed prior to use for detailed disclosure.

USA Rx Only. Rev 0815

What you don't know may **surprise you.**

Transitioning from a TO to an SIS

Listen

Noted physician educators Mickey Karram, MD, Vincent Lucente, MD, and Costas Apostolis, MD share their experiences using Transobturator and Single Incision Slings. Moderated by Marie Fidela Paraiso, MD.

Learn

What to take into account when transitioning to an SIS, including cadaveric placement comparison videos, technique differences and tips, product experiences and results.

Lunch

Friday September 30 2016 / 12:30-1:30 PM / AUGS 2016 Conference
Denver Convention Center / Room 205

Internationally renowned faculty



Dr. Marie Fidela Paraiso
Moderator

Marie Fidela R. Paraiso, MD, is a Staff Physician in the Department of Obstetrics and Gynecology at Cleveland Clinic, where she also serves as Head of the Center for Urogynecology and Reconstructive Pelvic Surgery.



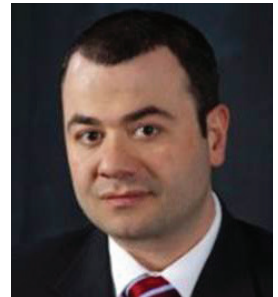
Dr. Mickey Karram
Presenter

Mickey Karram, MD, is the Director of Urogynecology at the Christ Hospital, Cincinnati, Ohio, and Volunteer Professor of Obstetrics and Gynecology at the University of Cincinnati School of Medicine.



Dr. Vincent Lucente
Presenter

Vincent Lucente, MD, MBA, is Medical Director of the Institute for Female Pelvic Medicine and Reconstructive Surgery and FPM Urogynecology Center in Allentown, PA, and Chief of Gynecology in the Department of Obstetrics and Gynecology at St. Luke's University Hospital in Bethlehem, PA.



Dr. Costas Apostolis
Presenter

Costas Apostolis, MD, is a fellowship trained, board certified female pelvic medicine and reconstructive surgery specialist.

