

Conference Program



Advancing Female Pelvic Medicine
and Reconstructive Surgery



PFDWEEK 2015

WASHINGTON STATE CONVENTION CENTER



SEATTLE, WASHINGTON

AUGS 36TH ANNUAL SCIENTIFIC MEETING **OCTOBER 13-17, 2015**

SAVE **THE** DATE



PFD**WEEK****2016**

COLORADO CONVENTION CENTER | DENVER, COLORADO

AUGS 37TH ANNUAL SCIENTIFIC MEETING **SEP 27 - OCT 1, 2016**



DUKE CONTENT REVIEWER

Ingrid Harm-Ernandes, PT, WCS, BCB-PMD
Duke Medicine

PROGRAM COMMITTEE

Miles Murphy, MD, MPH
Chair
The Institute for Female Pelvic Medicine

David "Ike" Rahn, MD
Vice Chair
UT Southwestern

Patrick Culligan, MD
Board Liaison
Atlantic Health

Kathleen Connell, MD
University of Colorado School of Medicine

Minita Patel, MD
Kaiser Permanente

Peter Rosenblatt, MD
Boston Urogynecology Associates

Eric Sokol, MD
Stanford University School of Medicine

Heather van Raalte, MD
Princeton Urogynecology

Emily Whitcomb, MD
Kaiser Permanente Southern California

ABSTRACT REVIEW COMMITTEE

Hasam Abed, MD
Vivian Aguilar, MD
Susan Barr, MD
Toby Chai, MD
Jeffrey Clemons, MD
Catrina Crisp, MD, MOC
Gena Dunivan, MD
Matthew Fraser, PhD
Kristi Greene, MD
Cara Grimes, MD, MAS
Keisha Jones, MD
Amie Kawasaki, MD
Michael Kennelly, MD
Felicia Lane, MD
Christine LaSala, MD
Jerry Lowder, MD, MSC
Gina Northington, MD, PhD
Amy Park, MD
Danielle Patterson, MD, MSC
Beri Ridgeway, MD
Cristina Saiz, MD
Tatiana Sanses, MD
Nazema Siddiqui, MD
Peter Takacs, MD, PhD, MBA
Paul Tulikangas, MD
Babak Vakili, MD
Amanda White, MD
Harvey Winkler, MD

WELCOME TO PFD WEEK!

Dear Colleagues,

Welcome to the inaugural **Pelvic Floor Disorders (PFD) Week**, AUGS' 36th Annual Meeting! PFD Week has been created by AUGS as an expansion of the successful AUGS Annual Scientific Meeting and is the go-to meeting for healthcare professionals interested in or actively practicing Female Pelvic Medicine and Reconstructive Surgery. We are excited to kick-off meeting festivities in the vibrant city of Seattle, Washington. The 2015 Program Committee has created a scientific schedule filled with two full days of clinically-focused workshops and two and a half days of presentations, highlighting groundbreaking research and advancements in technology.

You will have the opportunity to connect with experts in the field as you access top-notch, educational programs including oral scientific presentations, live surgery sessions, e-Poster presentations, educational roundtable discussions, and industry supported education events. There will also be multiple opportunities to explore the PFD Week Exhibit Hall, which showcases new, innovative, and relevant products and services.

During the day you can engage in the scientific program, but at night remember to relax at our networking and social events. These fun activities (listed on page 8) will allow you to connect, catch up, or become acquainted with your industry peers. Be sure to join your colleagues and friends for AUGSome Rockaraoke at the popular EMP (Experience Music Project) Museum on Friday night.

This week, take advantage of all that AUGS and Seattle have to offer. We are excited to share the inaugural PFD Week with you!



Miles Murphy, MD, MPH
Program Committee Chair



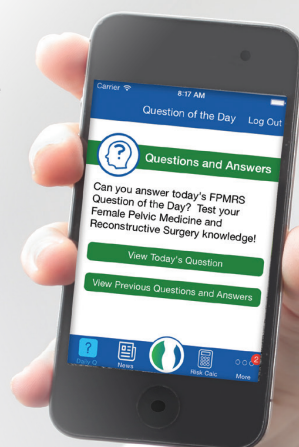
TABLE OF CONTENTS

Important Meeting Information	5	Fellows' Research Day	28
Continuing Education	7	Scientific Program	29-43
Networking Events	8	Meet the Experts Educational Roundtables	44-45
Non-Educational Industry Supporters	11	Industry Supported Education Sessions	47
Schedule at-a-Glance	12-13	Exhibit Hall Floor Plan	48
Concurrent Schedule at-a-Glance	15-19	Exhibitor Listing	49
Keynote Speakers	21	Exhibitor Descriptions	50-55
Special Interest Group Activities	23	Award Recipients	56-57
Live Surgery Information	25	AUGS Leadership and Staff	60-62
Workshop Schedule	26-27		

AUGS NOW delivers valuable resources directly to your mobile device. Download AUGS NOW and stay connected with AUGS by utilizing the following features:

- **Question of the Day** – Test your knowledge with a daily FPMRS question
- **Risk Calculator** – Calculate the risk of de novo postoperative stress urinary incontinence after surgery for pelvic organ prolapse
- **News** – Read the latest articles from FPMRS News, the FPMRS Journal, and the AUGS President's Blog
- **Guidelines and Position Statements** – Review current clinical practice guidelines, committee opinions, and position statements
- **Events** – Learn more about upcoming AUGS events
- **Membership Directory** – Connect and network with colleagues
- **Career Center** – Find or post open positions in the field of urogynecology
- **Social Media** – Stay connected with AUGS on Facebook, Twitter, LinkedIn, and YouTube

Search for "AUGS NOW" in the Apple store to download to your Apple IOS iphone or ipad.



IMPORTANT MEETING INFORMATION

ATTENDEE SERVICES DESK HOURS

South Lobby, Level 4

Tuesday, October 13

7:00 a.m. – 5:00 p.m.

Wednesday, October 14

7:00 a.m. – 6:00 p.m.

Thursday, October 15

6:15 a.m. – 5:00 p.m.

Friday, October 16

6:15 a.m. – 5:30 p.m.

Saturday, October 17

8:30 a.m. – 12:00 p.m.

SPEAKER READY ROOM HOURS

Room 603

AUGS provides a room for all speakers to review and submit their presentations before their session. To better serve you, this process must be completed at least three hours prior to your session.

Tuesday, October 13

6:30 a.m. – 6:30 p.m.

Wednesday, October 14

6:30 a.m. – 6:30 p.m.

Thursday, October 15

6:30 a.m. – 4:30 p.m.

Friday, October 16

6:30 a.m. – 6:00 p.m.

Saturday, October 17

7:30 a.m. – 12:30 p.m.

EXHIBIT HALL HOURS

Wednesday, October 14 5:30 p.m. – 7:30 p.m.

5:30 p.m. – 7:30 p.m.

Welcome Reception in Exhibit Hall

Thursday, October 15 10:30 a.m. – 6:00 p.m.

10:30 a.m. – 11:00 a.m.

Break in Exhibit Hall

12:30 p.m. – 2:30 p.m.

Lunch in Exhibit Hall

5:00 p.m. – 6:00 p.m.

Exhibit Hall Happy Hour

Friday, October 16 10:15 a.m. – 2:30 p.m.

10:15 a.m. – 10:45 a.m.

Break in Exhibit Hall

1:00 p.m. – 2:30 p.m.

Lunch in Exhibit Hall

MISSING: BLUE BEAR

The Denver Blue Bear is missing and needs to find his way back to the Colorado Convention Center.

Search for the Blue Bear in the Exhibit Hall and your reward could be **free registration** for PFD Week 2016 in Denver, Colorado!



EXPAND YOUR MEETING EXPERIENCE WITH THE PFD WEEK MOBILE APP

Connect with fellow attendees and access program details all through your mobile device. Search “AUGS PFD Week” in the Apple App Store or Google Play Store to download the app.

- Quickly reference meeting logistics including times and locations
- Search the meeting schedule and build your personal agenda
- Find your favorite speakers and view all the sessions he/she is presenting
- Access the 2015 exhibitor list and navigate the Exhibit Hall





Discover everything AUGS has to offer...

stop by booth #119

Join or Renew Today, and Just Stop By...

- Explore the course offerings in the AUGS FPMRS Education Portal
- Join us for a martini bar at the Welcome Reception
- Find out more about the PFD Registry and how you can participate
- Learn more about your AUGS membership benefits or how to become a member
- Learn about Voices for PFD patient resources

CONTINUING EDUCATION



DukeMedicine

Jointly provided by the Duke University Health System Department of Clinical Education and Professional Development and the American Urogynecologic Society (AUGS).



ANCC
AMERICAN NURSES CREDENTIALING CENTER



This activity has been planned and implemented by the Duke University Health System Department of Clinical Education and Professional Development and AUGS for the advancement of patient care. The Duke University Health System Department of Clinical Education & Professional Development is accredited by the American Nurses Credentialing Center (ANCC), the Accreditation Council for Pharmacy Education (ACPE), and the Accreditation Council for Continuing Medical Education (ACCME) to provide continuing education for the health care team.

TARGET AUDIENCE

This activity is designed for physicians, nurses, physical therapists, students, researchers, educators, and other healthcare professionals interested in Female Pelvic Medicine and Reconstructive Surgery. New treatment techniques and developments in both surgical and non-surgical settings will be shared through a variety of educational formats designed to encourage interactive discussion. Scientific material will be presented through oral presentations, posters, video, live surgeries, and tips and tricks presentations. Physicians and nurses are eligible to receive Joint Accreditation credits for this activity. No attendance certificates are issued for this course.

CE CERTIFICATE INFORMATION

In order to receive CE credit, participants must attend the activity and complete the post-event evaluation. Evaluations will be e-mailed to all participants immediately following the meeting. After the activity, you will receive an e-mail from Duke notifying you of instructions for how to obtain your certificate.

CREDIT DESIGNATION

Physicians: Duke University Health System Department of Clinical Education and Professional Development designates this jointly-accredited activity for a maximum of 32.0 *AMA PRA Category 1 Credits™*. Physicians should claim only credit commensurate with the extent of their participation in the activity.

Nursing: Duke University Health System Department of Clinical Education and Professional Development designates this activity for up to 32.0 credit hours for nurses. Nurses should claim only credit commensurate with the extent of their participation in this activity.

COMMERCIAL SUPPORT ACKNOWLEDGMENT

This Continuing Education (CE) activity is supported by educational grants. A complete list of supporters is published on page 11.

EDUCATIONAL GOALS AND OBJECTIVES

At the conclusion of this activity, participants should be able to:

- Describe and discuss the pathophysiology of pelvic floor disorders, including pelvic organ prolapse, urinary incontinence, fecal incontinence, and sexual dysfunction

- Identify risk factors and the epidemiology of pelvic floor disorders
- Explain the impact of pelvic floor disorders on the quality of life for women who suffer from these conditions
- Recognize the standard and new tools to assess and quantify pelvic floor disorders
- Describe non-surgical and surgical treatments used to manage pelvic floor disorders

DISCLOSURES

It is the policy of the Duke University Health System Department of Clinical Education and Professional Development to require the disclosure of anyone who is in a position to control the content of an educational activity. All relevant financial relationships with any commercial interests and/or manufacturers must be disclosed to participants at the beginning of each activity.

RESOLUTION OF CONFLICTS OF INTEREST

Duke University Health System Department of Clinical Education and Professional Development has implemented a process to resolve any potential conflicts of interest for each continuing education activity in order to help ensure content objectivity, independence, fair balance, and that content is aligned with the interest of the public.

NETWORKING EVENTS

AUGS MEMBER VOLUNTEER APPRECIATION LUNCHEON (INVITATION ONLY)

Wednesday, October 14

12:00 p.m. – 1:00 p.m.

AUGS would like to thank all of our volunteers for their support and time throughout the past year. Please join us for a lunch in your honor, as we celebrate the great work we have achieved this year.

PFD WEEK WELCOME RECEPTION

Wednesday, October 14

5:30 p.m. – 7:30 p.m.

Help us kick off PFD Week with the Welcome Reception held in the Exhibit Hall. Check out our industry exhibitors and catch up with colleagues as you enjoy light refreshments.

AUGS PRESIDENT'S RECEPTION (INVITATION ONLY)

Thursday, October 15

7:00 p.m. – 9:00 p.m.

Join AUGS President Amy Rosenman, MD and the Board of Directors for an intimate reception at the Seattle Space Needle. Enjoy cocktails and hors d'oeuvres as we reflect on the achievements of the past year.

SPECIAL INTEREST GROUP (SIG) BUSINESS MEETINGS

Are you a member of one of the many AUGS SIGs? If not, would you like to be? The groups below will be meeting to discuss the SIG goals and projects for the upcoming year. More information about meeting times and locations can be found on page 23.

- Advanced Practice, Physical Therapy, and Allied Health
- Basic Science
- Global Health
- Mesh/Graft Use in Pelvic Reconstructive Surgery
- Private Practice



AUGSOME ROCKARAOKE AT THE EMP MUSEUM

Friday, October 16

7:00 p.m. – 11:00 p.m.

Tickets can be purchased at Attendee Services for \$75 for physicians and \$25 for students.

Join AUGS at the EMP Museum for a night of food, drinks, music, and a unique karaoke (rockkaraoke) experience! Rockkaraoke offers teams and individuals the chance to perform with a live rock band. Release your inner rockstar!

The EMP is a leading-edge museum, dedicated to the ideas and risk-taking that fuel contemporary popular culture. If you are not interested in karaoke, there is still plenty for you to do. Museum exhibits will be open the entire night for you to view and enjoy. All ticket sales will benefit the PFD Research Foundation.



Interested in a VIP, backstage experience?

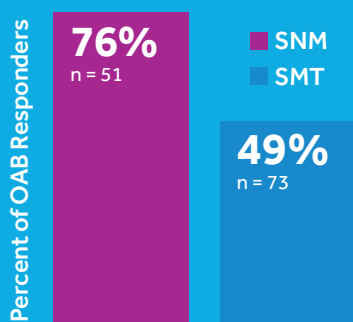
Have a true backstage experience at the AUGSOME Rockkaraoke Event! Winners of our silent auction, and up to four friends, will be whisked away to the VIP Lounge with a private birds-eye view of the Rockkaraoke stage. Winners will also have exclusive access to the "On Stage" Exhibit for the first hour-and-a-half of the event. To participate in the silent auction, visit the AUGS/PFD Research Foundation Booth by Friday, October 16 at noon.

EVIDENCE. OUTCOMES. INSIGHT.

Sacral Neuromodulation for Bladder Control

OUTPERFORMS MEDICATIONS AT 6 MONTHS*¹

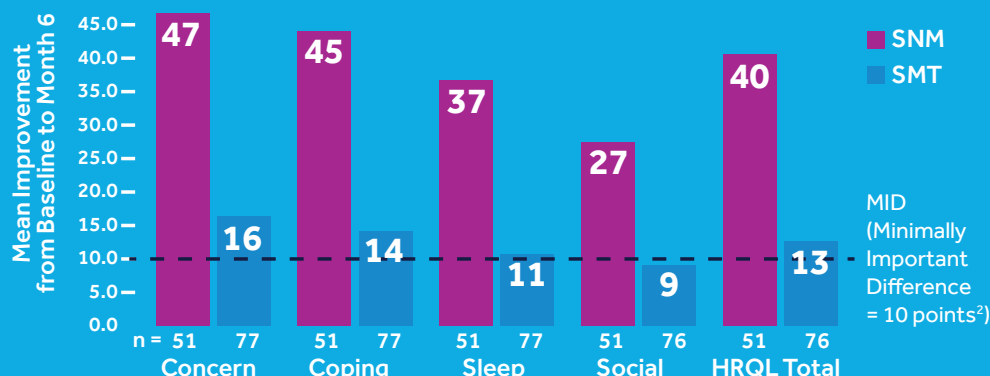
Superior Efficacy



Numbers reflect as treated results, defined as subjects with diary data at baseline and 6 months (p=0.002). Intent to treat results, which include all randomized subjects, are 61% for Sacral Neuromodulation (SNM) and 42% for standard medical therapy (SMT) (p=0.02).

*anticholinergic/antimuscarinic

3 Times Greater Improvements in Total Quality of Life



Device-related adverse events occurred in 31% of SNM patients, and medication-related adverse events occurred in 27% of SMT patients.

DEMONSTRATES SUSTAINED EFFICACY AT 12 MONTHS

85% of SNM Patients Achieved Clinical Success^{†3}

For patients with diary data at baseline and 12 months (n=220).

Clinical success defined as 50% improvement from baseline.

† Numbers reflect completers analysis. Modified completers analysis which includes subjects who either had a baseline and 12-month evaluation, or withdrew early due to device-related reasons and considered failures, are 82% at 12 months.

Device-related adverse events occurred in 30% of subjects post-implant. The most common device-related AEs were undesirable change in stimulation, implant site pain, and implant site infection.

Medtronic
Further. Together

1. Siegel S, Noblett K, Mangel J, Griebing TL, Sutherland SE, et al. Results of a prospective, randomized, multicenter study evaluating sacral neuromodulation with InterStim® Therapy compared to standard medical therapy at 6-months in subjects with mild symptoms of overactive bladder. *Neurol Urodyn*. Article published online: January 10, 2014. DOI: 10.1002/nau.22544.
2. Coyne KS, Matza LS, Thompson CL, Kopp ZS, Khullar V. Determining the importance of change in the overactive bladder questionnaire. *J Urol*. 2006;176(2):627-632.
3. Noblett K, Siegel S, Mangel J, et al. Results of a Prospective, Multicenter study evaluating quality of life, safety, and efficacy of sacral neuromodulation at twelve months in subjects with symptoms of overactive bladder. *Neurol Urodyn*. 2014. doi:10.1002/nau.22707.

Indications for Use:

InterStim® Therapy for Urinary Control is indicated for the treatment of urinary retention and the symptoms of overactive bladder, including urinary urge incontinence and significant symptoms of urgency-frequency alone or in combination, in patients who have failed or could not tolerate more conservative treatments.

The following Warning applies only to InterStim Therapy for Urinary Control:

Warning: This therapy is not intended for patients with mechanical obstruction such as benign prostatic hypertrophy, cancer, or urethral stricture.

InterStim® Therapy for Bowel Control is indicated for the treatment of chronic fecal incontinence in patients who have failed or are not candidates for more conservative treatments.

Contraindications for Urinary Control and for Bowel Control: Diathermy. Patients who have not demonstrated an appropriate response to test stimulation or are unable to operate the neurostimulator.

Warnings/Precautions/Adverse Events: For Urinary Control: Safety and effectiveness have not been established for bilateral stimulation; pregnancy, unborn fetus, and delivery; pediatric use under the age of 16; or for patients with neurological disease origins such as multiple sclerosis. **For Bowel Control:** Safety and effectiveness have not been established for bilateral stimulation; pregnancy, unborn fetus, and delivery; pediatric use under the age of 18; or for patients with progressive, systemic neurological diseases. **For Urinary Control and for Bowel Control:** The system may be affected by or adversely affect cardiac devices, electrocautery, defibrillators, ultrasonic equipment, radiation therapy, MRI, theft detectors/ screening devices. Adverse events include pain at the implant sites, new pain, lead migration, infection, technical or device problems, adverse change in bowel or voiding function, and undesirable stimulation or sensations, including jolting or shock sensations. Patients should be assessed preoperatively for the risk of increased bleeding. For full prescribing information, please call Medtronic at 1-800-328-0810 and/or consult Medtronic's website at www.medtronic.com. Product technical manual must be reviewed prior to use for detailed disclosure.

USARx Only. Rev 0815



Addressing Barriers to the
Optimal Management of the
OAB PATIENT

www.OABCentral.org

NEW CONTENT COMING SOON!

An educational Web site designed to provide resources and education
on the topic of overactive bladder (OAB) treatment.

Steering Committee:

Peter Rosenblatt, MD (Chair)

Steven Kleeman, MD

Karen Noblett, MD

Charles Rardin, MD

Web Site Features:

- **Webinars on Current and Emerging OAB Therapies**
- **Simulated Patient Encounter Videos**
- **Reviews of Recently Published OAB Articles**
- **Resources and References for Clinicians**
- **Downloadable Patient Tools to Use in Your Office**

NON-EDUCATIONAL INDUSTRY SUPPORTERS

THANK YOU TO THE 2015 PFD WEEK SPONSORS

PLATINUM SPONSORS

American Medical Systems

Coloplast

Astellas Pharma US, Inc.

Medtronic, Inc.

Boston Scientific

GOLD SPONSORS

Allergan

Kimberly-Clark

BRONZE SPONSORS

ACell, Inc.

Elsevier

Intuitive Surgical

SCHEDULE AT-A-GLANCE

TUESDAY, OCTOBER 13	
7:00 a.m. – 5:00 p.m.	Registration Open <i>Attendee Services Desk, South Lobby, Level 4</i>
8:00 a.m. – 5:00 p.m.	Full-Day Pre-Conference Workshops (Advanced Registration Required) <i>Room 606 and 607</i>
8:00 a.m. – 5:00 p.m.	FPMRS Fellowship Program Directors' Workshop: Preparing for Your Site Visit (Advanced Registration Required) <i>Room 616</i>
8:00 a.m. – 12:00 p.m.	Half-Day Pre-Conference Workshops (Advanced Registration Required) <i>Room 608 and 609</i>
1:00 p.m. – 5:00 p.m.	Half-Day Pre-Conference Workshops (Advanced Registration Required) <i>Room 608 and 609</i>
5:30 p.m. – 7:30 p.m.	Basic Science SIG Meeting <i>Room 618</i>
WEDNESDAY, OCTOBER 14	
7:00 a.m. – 6:00 p.m.	Registration Open <i>Attendee Services Desk, South Lobby, Level 4</i>
8:00 a.m. – 6:00 p.m.	FPMRS Fellows' Research Day (Advanced Registration Required) <i>Ballroom 6E</i>
8:00 a.m. – 12:00 p.m.	Half-Day Pre-Conference Workshops <i>Rooms 606-609, and 611</i>
12:00 p.m. – 1:00 p.m.	AUGS Member Volunteer Appreciation Luncheon (Invitation Only) <i>Room 619</i>
12:00 p.m. – 1:00 p.m.	*Diagnosis and Management of Overactive Bladder - <i>Supported by Astellas Pharma US, Inc. Ballroom 6C</i>
12:00 p.m. – 1:00 p.m.	*Evidence-based Innovation in the Surgical Management of SUI - <i>Supported by Coloplast Ballroom 6A</i>
1:00 p.m. – 5:00 p.m.	Half-Day Pre-Conference Workshops (Advanced Registration Required) <i>Room 606-609, 611</i>
3:00 p.m. – 5:00 p.m.	10 Years of Surgical Videos: Greatest Hits <i>Ballroom 6A</i>
5:30 p.m. – 7:30 p.m.	Welcome Reception in the Exhibit Hall <i>Hall 4B</i>
THURSDAY, OCTOBER 15	
6:15 a.m. – 5:00 p.m.	Registration Open <i>Attendee Services Desk, South Lobby, Level 4</i>
6:45 a.m. – 7:45 a.m.	Meet the Experts Educational Roundtables (Advanced Registration Required) <i>Room 606</i>
6:45 a.m. – 7:45 a.m.	*Moving Patients Along the Overactive Bladder Treatment Paradigm - <i>Supported by Allergan Room 608-609</i>
8:00 a.m. – 9:30 a.m.	Opening General Scientific Session <i>Hall 4A</i>
9:30 a.m. – 10:30 a.m.	AUGS Presidential Address and Jack Robertson Lifetime Achievement Award <i>Hall 4A</i>
10:30 a.m. – 11:00 a.m.	Break in the Exhibit Hall and ePoster Viewing in the Registration Area <i>Hall 4B/South Lobby</i>
11:00 a.m. – 12:30 p.m.	Concurrent Scientific Sessions <i>Ballroom 6A-6C</i>
12:30 p.m. – 1:30 p.m.	*Neuromodulation – Putting Data into Practice – <i>Supported by Medtronic Room 608</i>
12:30 p.m. – 1:30 p.m.	*Regeneration and Reinforcement: Two Goals of the Xenform™ Soft Tissue Repair Matrix Biologic Graft - <i>Supported by Boston Scientific Room 606-607</i>
12:30 p.m. – 2:30 p.m.	Lunch in the Exhibit Hall <i>Hall 4B</i>
1:30 p.m. – 2:30 p.m.	Advanced Practice, Physical Therapy, and Allied Health SIG Meeting <i>Room 616</i>

THURSDAY, OCTOBER 15 (CONTINUED)

1:30 p.m. – 2:30 p.m.	Mesh/Graft Use in Pelvic Reconstructive Surgery SIG Meeting <i>Room 615</i>
2:30 p.m. – 3:45 p.m.	General Scientific Session <i>Hall 4A</i>
3:45 p.m. – 4:15 p.m.	Raymond A. Lee Lecture: Achieving Surgical Excellence... No Crystal Star - Vincent Lucente, MD, FACOG, MBA <i>Hall 4A</i>
4:15 p.m. – 5:00 p.m.	AUGS Research Update and Business Meeting <i>Hall 4A</i>
5:00 p.m. – 6:00 p.m.	Exhibit Hall Happy Hour <i>Hall 4B</i>
7:00 p.m. – 9:00 p.m.	AUGS President's Reception (Invitation Only)

FRIDAY, OCTOBER 16

6:30 a.m. – 5:30 p.m.	Registration Open <i>Attendee Services Desk, South Lobby, Level 4</i>
6:45 a.m. – 7:45 a.m.	Meet the Experts Educational Roundtables (Advanced Registration Required) <i>Room 606</i>
6:45 a.m. – 7:45 a.m.	*A Novel Nonsurgical, OTC Treatment Option for Stress Urinary Incontinence (SUI) - <i>Supported by Kimberly-Clark Room 608-609</i>
8:00 a.m. – 9:30 a.m.	General Scientific Session <i>Hall 4A</i>
9:30 a.m. – 10:15 a.m.	J. Marion Sims Lecture: Everything You Learned in Your Residency Will Turn Out to be Wrong - William Parker, MD <i>Hall 4A</i>
10:15 a.m. – 10:45 a.m.	Break in the Exhibit Hall and ePoster Viewing <i>Attendee Services Desk, South Lobby, Level 4</i>
10:45 a.m. – 11:45 a.m.	Concurrent Scientific Sessions <i>Ballroom 6A-6C</i>
12:00 p.m. – 1:00 p.m.	Concurrent Scientific Sessions <i>Ballroom 6A-6C</i>
1:00 p.m. – 2:30 p.m.	Lunch in the Exhibit Hall <i>Hall 4B</i>
1:00 p.m. – 2:00 p.m.	*3½ Years Post-July 2011 FDA Public Health Notice on Vaginal Mesh: What to Do Now for Recurrent and Grades 3–4 POP - <i>Supported by AMS Room 608–609</i>
2:30 p.m. – 3:50 p.m.	General Scientific Session <i>Hall 4A</i>
3:50 p.m. – 4:20 p.m.	The New World of Physician Payment <i>Hall 4A</i>
4:30 p.m. – 5:30 p.m.	Concurrent Scientific Sessions <i>Ballroom 6A-6C</i>
5:30 p.m. – 6:30 p.m.	Global Health SIG Meeting <i>Room 616</i>
5:30 p.m. – 6:30 p.m.	Private Practice SIG Meeting <i>Room 616</i>
7:00 p.m. – 11:00 p.m.	AUGSome Rockaoke (ticket required) <i>EMP Museum</i>

SATURDAY, OCTOBER 17

8:30 a.m. – 12:00 p.m.	Registration Open <i>Attendee Services Desk, South Lobby, Level 4</i>
9:00 a.m. – 12:00 p.m.	On-Site Cadaver Dissection and Live Surgery <i>Hall 4A</i>
12:00 p.m.	Adjourn

*Industry supported education sessions are organized by industry and are not an official part of the AUGS PFD Week Program.

Voices for PFD

So I pee a little when I laugh. That's normal right?

Everyone talks about Kegels. Do they really work? How much is enough?

SHARE

COMPREHENSIVE FPMRS RESOURCES

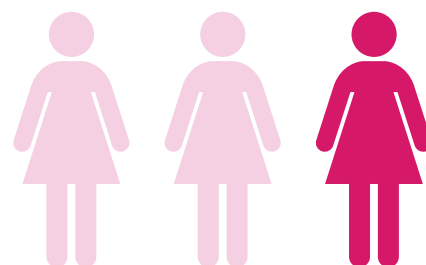
WITH YOUR PATIENTS

Visit www.VoicesforPFD.org



Features of our online community include the following:

- Discussion forums on pelvic organ prolapse, bladder control and bowel control problems
- Ask the Experts: Have a question about pelvic floor disorders? Our physician experts are here to help.
- Educational content and downloadable resources about pelvic floor disorders



..... As many as

1 IN 3 WOMEN

experience pelvic floor disorders.

Our online community, Voices for PFD, is an outlet for women to share their stories, get support from other women, and ask experts about disorders impacting the pelvic floor, such as incontinence and prolapse.



Pelvic Floor Dialogues

Patients can subscribe to our free bi-monthly e-newsletter to learn and keep up-to-date on the latest advancements on pelvic floor disorders.



Voices for PFD Mobile App

Coming soon – a new mobile app from AUGS featuring resources for patients.



Voices for PFD YouTube Channel

Women with pelvic disorders can subscribe to the Voices for PFD YouTube Channel to hear from leading physicians about pelvic floor disorder symptoms, treatment options, and resources. New videos are added throughout the year.



Patient educational resources are sponsored by AUGS and supported in part through educational grants from:



CONCURRENT SESSIONS AT-A-GLANCE

Thursday, October 15

11:00 a.m. – 12:30 p.m.	Time	Scientific Concurrent Session 1 – Surgical/Clinical, Ballroom 6B	Time	Scientific Concurrent Session 2 – Basic Science, Ballroom 6A	Scientific Concurrent Session 3 – Epidemiology Quality of Life, Ballroom 6C
	11:00 a.m. – 11:11 a.m.	Paper 7 - SEXUAL FUNCTION AND PRACTICES AMONG WOMEN USING A PESSARY FOR PELVIC FLOOR DISORDERS	11:00 a.m. – 11:11 a.m.	Paper 15 - PREGNANCY INDUCED ADAPTATIONS IN INTRAMUSCULAR EXTRACELLULAR MATRIX OF PELVIC FLOOR MUSCLES	Paper 23 - A RANDOMIZED COMPARATIVE STUDY CORRELATING COUGH STRESS TEST WITH URODYNAMICS AND 24 HOUR PAD TEST IN THE EVALUATION OF STRESS URINARY INCONTINENCE
	11:11 a.m. – 11:22 a.m.	Paper 8 - REOPERATION FOR RECURRENT STRESS URINARY INCONTINENCE FOLLOWING MIDURETHRAL SLING REVISION; A RETROSPECTIVE COHORT STUDY	11:11 a.m. – 11:22 a.m.	Paper 16 - SIGNIFICANT LINKAGE EVIDENCE FOR EARLY ONSET POP ON CHROMOSOME 11	Paper 24 - THE PREVALENCE OF COGNITIVE IMPAIRMENT IN WOMEN OVER AGE 55 PRESENTING FOR TREATMENT OF PELVIC FLOOR DISORDERS
	11:22 a.m. – 11:33 a.m.	Paper 9 - IF YOU COULD SEE WHAT WE SEE, WOULD IT BOTHER YOU?	11:22 a.m. – 11:33 a.m.	Paper 17 - IMPACT OF A REGENERATIVE BIOLOGIC SCAFFOLD ON VAGINAL STRUCTURE AND FUNCTION	Paper 25 - CARE-SEEKING FOR STRESS INCONTINENCE AND OVERACTIVE BLADDER AMONG PAROUS WOMEN
	11:33 a.m. – 11:44 a.m.	Paper 10 - A MULTICENTER, PROSPECTIVE, RANDOMIZED, CONTROLLED, CROSS-OVER STUDY TO ASSESS CHANGES IN VAGINAL MICROFLORA WHILE USING A NOVEL NON-ABSORBING INTRA-VAGINAL DEVICE IN THE TEMPORARY MANAGEMENT OF STRESS URINARY INCONTINENCE (SUI) IN WOMEN	11:33 a.m. – 11:44 a.m.	Paper 18 - CELL THERAPY FOR NEUROGENIC DETRUSOR OVERACTIVITY	Paper 26 - AUTONOMIC INNERVATION OF THE PELVIS IN UNEMBALMED FEMALE CADAVERS: CLINICAL APPLICATIONS TO PELVIC SURGERY
	11:44 a.m. – 11:55 a.m.	Paper 11 - FALSE NEGATIVES OF STANDARD URINE CULTURES MAY DELAY PATIENT TREATMENT	11:44 a.m. – 11:55 a.m.	Paper 19 - URGENCY URINARY INCONTINENCE AND THE INTEROCEPTIVE NETWORK: BRAIN RESPONSES TO URGE PERCEPTION	Paper 27 - THE PATIENT VOICE IN DEFINING OUTCOMES FOR PELVIC ORGAN PROLAPSE (POP)
	11:55 a.m. – 12:06 p.m.	Paper 12 - ANAL SPHINCTER INJURIES AFTER SPONTANEOUS VS OPERATIVE DELIVERY – IS THERE A DIFFERENCE IN POSTPARTUM SYMPTOMS?	11:55 a.m. – 12:06 p.m.	Paper 20 - LONG TERM BIOSAFETY OF HUMAN INDUCED PLURIPOTENT STEM CELLS	Paper 28 - DECREASE IN HEALTH RESOURCE UTILIZATION FOLLOWING TOPAS® TREATMENT FOR FECAL INCONTINENCE
	12:06 p.m. – 12:21 p.m.	Paper 13 - LEVATOR ANI SUBTENDED VOLUME (LASV): A NOVEL ASSAY FOR PREDICTING SURGICAL FAILURE AFTER UTEROSACRAL LIGAMENT SUSPENSION Paper 14 - ESTIMATED LASV AS A CLINICAL PREDICTOR FOR SURGICAL FAILURE IN UTEROSACRAL LIGAMENT SUSPENSION: AN INTRA-OBSERVER REPEATABILITY ANALYSIS	12:06 p.m. – 12:17 p.m.	Paper 21 - EFFECTS OF AGING UPON THE HOST RESPONSE TO POLYPROPYLENE MESH	Paper 29 - PATIENT SATISFACTION AND REGRET WITH DECISION DIFFER BETWEEN OUTCOMES IN THE COMPOSITE DEFINITION OF SUCCESS AFTER RECONSTRUCTIVE SURGERY
	12:21 p.m. – 12:27 p.m.	Tips and Tricks - ASSESSING URETERAL PATENCY: USING D50 AS A VISUALIZATION MEDIUM IN CYSTOSCOPY	12:17 p.m. – 12:28 p.m.	Paper 22 - THE FEMALE URINARY MICROBIOTA RELATES TO INCONTINENCE MEDICATION EFFICACY	Paper 30 - THE EFFECT OF MAJOR DEPRESSION ON QUALITY OF LIFE AFTER SURGICAL MANAGEMENT OF STRESS URINARY INCONTINENCE: A SECONDARY ANALYSIS OF THE TRIAL OF MID-URETHRAL SLINGS (TOMUS TRIAL)

CONCURRENT SESSIONS AT-A-GLANCE

Friday, October 16

10:45 a.m. – 11:46 a.m.	Time	Scientific Concurrent Session 4 – Clinical, Ballroom 6B	Time	Scientific Concurrent Session 5 – Oral Posters, Surgical, Ballroom 6A	Scientific Concurrent Session 6 – Oral Posters, Clinical, Ballroom 6C
	10:45 a.m. – 10:56 a.m.	Paper 43 - IS THE PELVIC FLOOR ANATOMY DISTORTED DURING PELVIC FLOOR ENDOVAGINAL ULTRASOUND?	10:45 a.m. – 10:58 a.m.	Video 6 - A NOVEL APPROACH TO SACRAL FIXATION DURING LAPAROSCOPIC SUPRACERVICAL HYSTERECTOMY AND SACROCERVICOPEXY FOR UTEROVAGINAL PROLAPSE	Video 7 - TRANSVAGINAL APPROACH TO URETHRAL RECONSTRUCTION AFTER MIDURETHRAL SLING COMPLICATION
	10:56 a.m. – 11:07 a.m.	Paper 44 - THE IMPACT OF OBESITY ON INTRAOPERATIVE COMPLICATIONS AND PROLAPSE RECURRENCE FOLLOWING MINIMALLY INVASIVE SACROCOLPOPEXY	10:58 a.m. – 11:02 a.m.	Oral Poster 1 - OPTIMIZING SACRAL FIXATION OF MESH; EXPANDED COMPARISON OF SURGICAL TECHNIQUES	Oral Poster 10 - A NOVEL APPROACH TO MAP QUANTIFIED FASCICLE DATA ONTO A 3D MODEL OF PELVIC FLOOR MUSCLES
			11:02 a.m. – 11:06 a.m.	Oral Poster 2 - LONG-TERM RESULTS OF ROBOTIC- ASSISTED LAPAROSCOPIC SACROCOLPOPEXY USING LIGHTWEIGHT Y MESH	Oral Poster 11 - 3T PELVIC MRI PRE/POST PREGNANCY AND DELIVERY IN NULLIPAROUS WOMEN PRESENTING FOR INFERTILITY EVALUATION
	11:07 a.m. – 11:18 a.m.	Paper 45 - THE EFFECT OF BODY MASS INDEX ON PELVIC FLOOR SUPPORT ONE YEAR POSTPARTUM	11:06 a.m. – 11:10 a.m.	Oral Poster 3 - OUTCOMES AFTER SURGICAL MANAGEMENT OF STAGE IV COMPARED TO STAGE II APICAL PELVIC ORGAN PROLAPSE: A COHORT STUDY WITH A FOLLOW UP SURVEY	Oral Poster 12 - CHANGES IN THE PERINEAL BODY DURING AND AFTER LABOR ARE RELATED TO POSTPARTUM PELVIC ORGAN PROLAPSE MEASUREMENTS
			11:10 a.m. – 11:14 a.m.	Questions for Oral Posters 1-3	Questions for Oral Posters 10-12
			11:14 a.m. – 11:18 a.m.	Oral Poster 4 - PREVALENCE OF OCCULT PATHOLOGY WITHIN MORCELLATED UTERI REMOVED DURING CONCOMITANT ROBOTIC SACROCOLPOPEXY	Oral Poster 13 - INTRAVESICAL TREATMENT WITH MEFLUQUINE, A PANNEXIN 1 CHANNEL BLOCKER, IMPROVES BLADDER FUNCTION IN MICE WITH CYCLOPHOSPHAMIDE-INDUCED HEMORRHAGIC CYSTITIS
	11:18 a.m. – 11:29 a.m.	Paper 46 - ADHERENCE AND PERSISTENCE OF MIRABEGRON AND ANTICHOLINERGIC THERAPIES IN PATIENTS WITH OVERACTIVE BLADDER: A REAL WORLD CLAIMS DATA ANALYSIS	11:18 a.m. – 11:22 a.m.	Oral Poster 5 - THE ROLE OF OBESITY IN SUCCESS AND COMPLICATIONS IN PATIENTS UNDERGOING RETROPUBIC TENSION-FREE VAGINAL TAPE SURGERY FOR STRESS URINARY INCONTINENCE	Oral Poster 14 - POTENTIAL MECHANISMS FOR MESH-RELATED COMPLICATIONS: EXPOSURE VS. PAIN
			11:22 a.m. – 11:26 a.m.	Oral Poster 6 - RISK FACTORS FOR VAGINAL CUFF DEHISCENCE AFTER HYSTERECTOMY: A RETROSPECTIVE CASE-CONTROL STUDY OF THE FPRN	Oral Poster 15 - EFFECT OF ESTRADIOL AND PROGESTERONE ON TOLL-LIKE RECEPTOR 5 IN CULTURED HUMAN BLADDER EPITHELIAL CELLS
			11:26 a.m. – 11:30 a.m.	Questions for Oral Posters 4-6	Questions for Oral Posters 13-15
	11:29 a.m. – 11:42 a.m.	Video 5 - MANAGEMENT OF DELAYED IATROGENIC URETERAL INJURIES	11:30 a.m. – 11:34 a.m.	Oral Poster 7 - CLINICAL OUTCOMES AFTER OPERATIVE MANAGEMENT OF COMPLICATIONS RESULTING FROM TRANSVAGINAL MESH FOR PELVIC ORGAN PROLAPSE	Oral Poster 16 - IMPACT OF VAGINAL DELIVERY ON STRUCTURE AND FUNCTION OF PELVIC FLOOR MUSCLES
			11:34 a.m. – 11:38 a.m.	Oral Poster 8 - ASSESSING URETERAL PATENCY USING D10 CYSTOSCOPY FLUID: EVALUATION OF URINARY TRACT INFECTION RATES	Oral Poster 17 - NOVEL USE OF CARDIAC ELECTROPHYSIOLOGY CATHETER TO MAP AND PACE BLADDER ELECTRICAL ACTIVITY
			11:38 a.m. – 11:42 a.m.	Oral Poster 9 - PERIOPERATIVE ADVERSE EVENTS FOLLOWING COLPOCLEISIS FOR TREATMENT OF UTEROVAGINAL AND POST-HYSTERECTOMY VAGINAL VAULT PROLAPSE	Oral Poster 18 - HOW DOES A COMPLIANT AIR-FILLED INTRAVESICAL BALLOON INCREASE THE ABDOMINAL PRESSURE REQUIRED TO INDUCE STRESS URINARY INCONTINENCE (SUI) RELATED LEAKAGE?
			11:42 a.m. – 11:46 a.m.	Questions for Oral Posters 7-9	Questions for Oral Posters 16-18

Friday, October 16 (continued)

12:00 p.m. – 1:00 p.m.	Time	Scientific Concurrent Session 7 – Basic Science, Ballroom 6B	Time	Scientific Concurrent Session 8 – Oral Posters, LUTS/Sexual Health, Ballroom 6A	Scientific Concurrent Session 9 – Oral Posters, Epidemiology / Quality of Life, Ballroom 6C
	12:00 p.m. – 12:15 p.m.	Paper 47 - DIFFERENTIAL EFFECTS OF VAGINAL ESTROGENS AND OSPEMIFENE ON THE VAGINAL WALL Paper 48 - EFFECTS OF OSPEMIFENE AND VAGINAL ESTROGEN ON THE RAT LOWER URINARY TRACT	12:00 p.m. – 12:13 p.m.	Video 10 - X-FLAP REPAIR OF ACQUIRED CHRONIC CLOACA	Video 11 - SACRAL HYSTEROPEXY SLING: A VIDEO DEMONSTRATION AND PRELIMINARY RESULTS OF AN APPROACH TO UTERINE CONSERVING SURGERY FOR ADVANCED PROLAPSE
	12:15 p.m. – 12:28 p.m.	Video 8 - BEEF TONGUE MODEL - A PRACTICAL ALTERNATIVE FOR TEACHING THE REPAIR OF OBSTETRIC ANAL SPHINCTER LACERATION	12:13 p.m. – 12:17 p.m.	Oral Poster 19 - BREAKDOWN OF PERINEAL LACERATION REPAIR FOLLOWING VAGINAL DELIVERY	Oral Poster 28 - KNOWLEDGE, PERCEPTIONS AND ATTITUDES TOWARDS PELVIC ORGAN PROLAPSE AND URINARY INCONTINENCE IN SPANISH-SPEAKING LATINAS ON THE US/MEXICO BORDER
			12:17 p.m. – 12:21 p.m.	Oral Poster 20 - RISK FACTORS FOR A PREDICTION MODEL OF OVERACTIVE BLADDER AFTER SACROCOLPOPEXY	Oral Poster 29 - BURDEN OF LOWER URINARY TRACT SYMPTOMS AMONG POSTMENOPAUSAL WOMEN IN AN INTEGRATED HEALTHCARE SYSTEM
			12:21 p.m. – 12:25 p.m.	Oral Poster 21 - WOMEN GET IT RIGHT: THE MY PELVIC ORGAN PROLAPSE PERCEPTION (MYPOPP) STUDY	Oral Poster 30 - BARRIERS TO CARE-SEEKING FOR ACCIDENTAL BOWEL LEAKAGE
			12:25 p.m. – 12:29 p.m.	Questions for Oral Posters 19-21	Questions for Oral Posters 28-30
	12:28 p.m. – 12:43 p.m.	Paper 49 - IN VIVO INTEGRATION AND MECHANISM OF ACTION OF SMOOTH MUSCLE PRECURSOR CELLS DERIVED FROM HUMAN EMBRYONIC STEM CELLS Paper 50 - EFFICACY OF HUMAN SMOOTH MUSCLE PRECURSOR CELLS DERIVED FROM HUMAN EMBRYONIC STEM CELLS FOR TREATMENT OF STRESS URINARY INCONTINENCE	12:29 p.m. – 12:33 p.m.	Oral Poster 22 - ELECTRICAL STIMULATION OF AFFERENT NERVES IN THE FOOT WITH TRANSCUTANEOUS ADHESIVE PAD ELECTRODES IMPROVES OVERACTIVE BLADDER SYMPTOMS	Oral Poster 31 - RISK OF VENOUS THROMBOEMBOLISM IN PATIENTS UNDERGOING SURGERY FOR PELVIC ORGAN PROLAPSE
			12:33 p.m. – 12:37 p.m.	Oral Poster 23 - THE EFFECTS OF THE EROSCILLATOR® GENITAL VIBRATORY STIMULATION DEVICE ON FEMALE SEXUAL DYSFUNCTION	Oral Poster 32 - RISK OF A SUBSEQUENT SURGERY AFTER AN INITIAL STRESS INCONTINENCE AND/OR PELVIC ORGAN PROLAPSE PROCEDURE
			12:37 p.m. – 12:41 p.m.	Oral Poster 24 - EVALUATING SACRAL NEUROMODULATION LEAD PLACEMENT CHARACTERISTICS WITH MOTOR RESPONSES IN A LARGE STUDY OF OVERACTIVE BLADDER	Oral Poster 33 - TRENDS IN UTERINE PRESERVATION AND OTHER SURGICAL MANAGEMENT OF UTEROVAGINAL PROLAPSE IN THE UNITED STATES BETWEEN 2002 AND 2012
			12:41 p.m. – 12:45 p.m.	Questions for Oral Posters 22-24	Questions for Oral Posters 31-33
	12:43 p.m. – 12:56 p.m.	Video 9 - ANATOMY OF THE FEMALE SEXUAL RESPONSE	12:45 p.m. – 12:49 p.m.	Oral Poster 25 - VOIDING SYMPTOMS FOLLOWING MIDURETHRAL SLING REVISION	Oral Poster 34 - A RANDOMIZED-CONTROLLED TRIAL OF PATIENT-CONTROLLED VALVE CATHETER VERSUS INDWELLING FOLEY CATHETER FOR SHORT-TERM BLADDER DRAINAGE
			12:49 p.m. – 12:53 p.m.	Oral Poster 26 - WHAT DOES IT MEAN TO BE SEXUALLY ACTIVE?	Oral Poster 35 - OPTIMIZING PATIENT SATISFACTION WITH SUPRAPUBIC BLADDER DRAINAGE FOLLOWING RECONSTRUCTIVE PELVIC SURGERY
			12:53 p.m. – 12:57 p.m.	Oral Poster 27 - 24-HOUR VOIDING DIARIES VERSUS 3-DAY VOIDING DIARIES: A CLINICAL COMPARISON	Oral Poster 36 - ANALYSIS OF SURGICAL OUTCOMES AND DETERMINANTS INSTIGATING LAWSUITS - CORRELATION OF LITIGATION AND INJURY IN MESH PLACED VAGINALLY (THE CLAIMS STUDY)
		12:57 p.m. – 1:01 p.m.	Questions for Oral Posters 25-27	Questions for Oral Posters 34-36	



In 2013, the urogynecology community lost a dedicated and passionate research nurse, Robin Haff. To recognize not only her contributions, but those of all clinical research nurses and coordinators in the community, AUGS created the Robin Haff Research Award, presented annually to an individual in recognition of outstanding and sustained contributions to female pelvic floor disorders research.

This award recognizes the important role clinical research nurses and coordinators play in the clinical research process. Without dedicated and committed research staff, high quality research would not be possible. Please join us on Thursday, October 15 at 4:15 pm for the AUGS Research Update and Business Meeting where the 2015 Robin Haff Research Award will be presented to Judy Gruss.

ROBIN HAFF RESEARCH AWARD

Congratulations Judy!

You are the backbone of the Magee research program. We are grateful for your generosity in promoting, supporting and guiding us in our early research efforts as residents, fellows and also as faculty. You have been a wonderful role model for many young research assistants and a true friend to all fellows with whom you have worked. Thank you for your encouragement, for showing us the path of least resistance, and for sharing your wisdom. Some of us would still be trying to get our applications through the IRB if it weren't for you! We admire your "voice of reason" and how creative, confident, and calm you are in the midst of storms.

Kudos to the woman who is responsible for recruitment and retention of thousands of women in Pittsburgh for the past 20 years! We cannot think of anyone more deserving of this award.

You live the spirit and dedication of its legacy namesake. Looking forward to seeing you in Seattle!

Vivian Sung
Heidi Brown
Jon Shepherd
Nancy Howden
Jerry L. Lowder
James Daucher
Marianna Alperin

Keisha Jones
Beth Frankman
Laura Skoczylas
Sallie Oliphant
Craig Mayr
Mary Ackenbom

Erin Seifert Lavelle
Gary Sutkin
Michael Bonidie
Pam Moalli
Halina Zyczynski

*The Robin Haff Research Award
is supported by a grant from
American Medical Systems.*

 **AMS**
an endo health solution

CONCURRENT SESSIONS AT-A-GLANCE

Friday, October 16 (continued)

Time	Scientific Concurrent Session 10 – Basic Science, Ballroom 6B	Time	Scientific Concurrent Session 11 – Oral Posters, Miscellaneous, Ballroom 6A	Scientific Concurrent Session 12 – Oral Posters, Miscellaneous, Ballroom 6C
4:30 p.m. – 5:30 p.m.	Paper 55 - SURFACE ORIENTATION IMPACTS MEASURED STIFFNESS OF SURGICAL MESH	4:30 p.m. – 4:43 p.m.	Video 14 - ANATOMIC LANDMARKS DURING ROBOTIC-ASSISTED LAPAROSCOPIC SACRAL COLPOPEXY	Video 15 - CYSTOCELE REPAIR USING AUTOLOGOUS ILIOTIBIAL BAND
	Paper 56 - THE MICROBIOLOGY OF IRRITATIVE BLADDER SYMPTOMS: URINE MICROBIOTA, CYTOKINE PROFILES AND SYMPTOM SEVERITY AMONG WOMEN WITH INTERSTITIAL CYSTITIS/PAINFUL BLADDER SYNDROME	4:43 p.m. – 4:47 p.m.	Oral Poster 37 - ELEVATE-PC PROLAPSE REPAIR SYSTEM: MID-TERM EXPERIENCE	Oral Poster 46 - UTILITY PREFERENCE SCORES FOR PELVIC ORGAN PROLAPSE
		4:47 p.m. – 4:51 p.m.	Oral Poster 38 - BASELINE SYMPTOM SEVERITY AND THERAPEUTIC SUCCESS IN A LARGE PROSPECTIVE TRIAL OF SACRAL NEUROMODULATION THERAPY FOR OVERACTIVE BLADDER PATIENTS	Oral Poster 47 - RESPONSIVENESS OF A COMPUTERIZED-ADAPTIVE TEST FOR URINARY INCONTINENCE SYMPTOMS
	Paper 57 - IMMUNOLOGIC CHARACTERIZATION OF THE LEVATOR ANI MUSCLE IN WOMEN WITH PELVIC ORGAN PROLAPSE	4:51 p.m. – 4:55 p.m.	Oral Poster 39 - LONGER-TERM OUTCOMES OF COMBINED TOLTERODINE AND VAGINAL ESTRADIOL CREAM FOR OVERACTIVE BLADDER SYMPTOMS AFTER SINGLE-THERAPY TREATMENT	Oral Poster 48 - LONG-TERM QUALITY OF LIFE AND SEXUAL FUNCTION AFTER VAGINAL SURGERY FOR APICAL PROLAPSE: ANALYSIS OF A RANDOMIZED TRIAL OF UTEROSACRAL AND SACROSPINOUS
		4:55 p.m. – 4:59 p.m.	Questions for Oral Posters 37-39	Questions for Oral Posters 46-48
		4:59 p.m. – 5:01 p.m.	Oral Poster 40 - PELVIC FLOOR SYMPTOMS AND SPINAL CURVATURE IN WOMEN	Oral Poster 49 - UTILIZING TECHNOLOGY IN ASSESSMENT OF LOWER URINARY TRACT SYMPTOMS: A RANDOMIZED TRIAL OF ELECTRONIC VERSUS PAPER VOIDING DIARIES
	Paper 58 - COMPARISON OF THREE DIFFERENT METHODS FOR GENERATING A STRESS URINARY INCONTINENCE RAT MODEL	5:01 p.m. – 5:05 p.m.	Oral Poster 41 - A LARGE RETROSPECTIVE SERIES OF PREGNANCY AND DELIVERY AFTER MIDURETHRAL SLING	Oral Poster 50 - PATIENT COMPLIANCE TO PELVIC FLOOR PHYSICAL THERAPY FOR URINARY INCONTINENCE
		5:05 p.m. – 5:09 p.m.	Oral Poster 42 - PERSISTENT URINARY SYMPTOMS ONE YEAR POSTPARTUM IN WOMEN SUSTAINING AN OBSTETRIC ANAL SPHINCTER INJURY	Oral Poster 51 - WARM-UP BEFORE ROBOTIC HYSTERECTOMY DOES NOT IMPROVE TRAINEE OPERATIVE PERFORMANCE: A RANDOMIZED TRIAL
		5:09 p.m. – 5:13 p.m.	Questions for Oral Posters 40-42	Questions for Oral Posters 49-51
	Video 13 - A LOW-COST DO-IT-YOURSELF TRAINING MODEL FOR DIAGNOSTIC CYSTOSCOPY	5:13 p.m. – 5:17 p.m.	Oral Poster 43 - PATIENT SATISFACTION WITH NURSE-LED TELEPHONE FOLLOW-UP IN AN AMBULATORY SETTING	Oral Poster 52 - RECTOCELES: IS THERE A CORRELATION BETWEEN CLINICAL EXAM AND RADIOGRAPHIC FINDINGS IN SYMPTOMATIC WOMEN? A RETROSPECTIVE STUDY.
		5:17 p.m. – 5:21 p.m.	Oral Poster 44 - A NEW ALGORITHM FOR POSTOPERATIVE VOID TRIALS	Oral Poster 53 - RISK FACTORS FOR MICROSCOPIC HEMATURIA IN WOMEN
		5:21 p.m. – 5:25 p.m.	Oral Poster 45 - ULTRASOUND INDICATORS OF RECTAL SUPPORT DEFECT IN WOMEN WITH OBSTRUCTIVE DEFECATORY SYMPTOMS	Oral Poster 54 - A REVIEW OF GRAFT-VERSUS-HOST DISEASE ASSOCIATED VULVOVAGINAL SYMPTOMS IN PATIENTS WHO HAVE UNDERGONE BONE MARROW TRANSPLANT
		5:25 p.m. – 5:29 p.m.	Questions for Oral Posters 43-45	Questions for Oral Posters 52-54

See what's ahead for urogynecology.

Allergan Booth #114

Allergan is proud to be a **Gold Level Sponsor**
PFD Week 2015, AUGS 36th Annual Scientific Meeting

Allergan Industry Expert Theater

Moving Patients Along the Overactive Bladder Treatment Paradigm

Thursday, October 15th | 6:45am - 7:45am | Room 608-609

Washington State Convention Center

Live breakfast presentation featuring:

- > **Vincent Lucente, MD, MBA** Institute for Female Pelvic Medicine, Allentown, PA
- > **Jonathan Gleason, MD** Carillion Clinic, Roanoke, VA
- > **Tom Powell** National Director, Urology Practice Consultants, Allergan Urology

Participants can earn a **Certificate of Attendance** by attending the program above
and completing a hands-on demo at the Allergan booth

Meet The Experts at Allergan Booth Hands-on Demonstrations

Wednesday, October 14 – Friday, October 16

Visit our booth for a full schedule.

FEATURED FACULTY:

- > **Jonathan Gleason, MD** Carillion Clinic, Roanoke, VA
- > **Janet Harris-Hicks, MD, FPMRS** Sandhills Gynecology Hamlet, NC
- > **Sam Hessami, MD, FACOG** Sovereign Medical Group, Fair Lawn, NJ
- > **Vincent Lucente, MD, MBA** Institute for Female Pelvic Medicine, Allentown, PA
- > **Rebecca McCrery, MD** Adult Pediatric Urology & Urogynecology, P.C., Omaha, NE
- > **Peter Sand, MD** Evanston Continence Center, Winnetka, IL



Pursuing Next.

KEYNOTE SPEAKERS

RAYMOND A. LEE LECTURE

Thursday, October 15

3:45 p.m. – 4:15 p.m.

Hall 4A

The Raymond A. Lee Endowment is a named lectureship created by AUGS to honor one person annually who contributed to the development and surgical advancement of urogynecology and to further advance the knowledge and teaching of gynecologic surgery through ongoing AUGS educational programs.

ACHIEVING SURGICAL EXCELLENCE... NO CRYSTAL STAR



Vincent Lucente, MD, MBA, FACOG, FPMRS

For the past twenty-five years, Dr. Lucente has dedicated his career to the pursuit of innovation and surgical excellence in minimally invasive approaches for the treatment of female urinary and fecal incontinence, as well as pelvic organ prolapse. He has helped pioneer many new surgical techniques and was the first physician in the United States to perform a transvaginal midurethral sling for stress incontinence. Years later he was among the first to teach single incision sling techniques, which he now performs in his office-based surgical suite for properly selected patients. He has instructed and trained numerous residents and fellows over the years, including colleagues around the globe.

He oversees a busy clinical practice that is highly focused on all aspects of patient satisfaction. He continues to engage patients in thorough discussions about their care, ensuring that they feel comfortable and knowledgeable in selecting their treatment options. He is the Director of the Minimally Invasive Gynecologic Fellowship at St. Luke Health Network, in the Lehigh Valley area of Pennsylvania.

J. MARION SIMS LECTURE

Friday, October 16

9:30 a.m. – 10:15 a.m.

Hall 4A

The J. Marion Sims Lecture is presented annually at the AUGS Annual Scientific Meeting to continue to educate today's gynecological surgeon about the importance of supporting and encouraging innovation within women's health.

EVERYTHING YOU LEARNED IN YOUR RESIDENCY WILL TURN OUT TO BE WRONG



William H. Parker, MD

Dr. William H. Parker is a clinical professor in the department of Obstetrics and Gynecology at the UCLA School of Medicine and is the Director of Minimally Invasive Gynecologic Surgery at Santa Monica-UCLA Medical Center. From 1978 - 2013, he was in private practice in Santa Monica with Drs. Amy Rosenman and Ingrid Rodi.

Dr. Parker has served on the Board of Trustees of the AAGL, was president in 2000 and chair of the advisory board from 2008-14. In 2012, he was the Honorary Chair of the Global Congress of Minimally Invasive Gynecology and in 2013 was the Distinguished Physician of the Southern California Obstetrics and Gynecology Assembly. Dr. Parker has been selected for Best Doctors in America from 1996-2015.

LIVE TWITTER CHAT

Join AUGS and Boston Scientific for a twitter chat on Thursday, October 15 from 1:30 pm – 2:30 pm PST. Drs. Kim Kenton and John Crane will lead "The Great Sacrocolpopexy Debate: Robotic or Laparoscopic." Follow along or join in using #SCPDebate!

Connect with AUGS on Facebook, Twitter, LinkedIn, and YouTube to see highlights from the meeting. These channels are a great way to get the inside scoop and connect with colleagues. Visit the AUGS home page for direct links to all four sites.

Use #PFDweek to view conversations surrounding the meeting and share your experiences with the AUGS community and attendees.





INNOVATION FOR PELVIC HEALTH

LABORIE Aquarius® Systems

THE MOST ADVANCED & INTEGRATED
PELVIC FLOOR DIAGNOSTICS SOLUTION
ON THE MARKET

Practice Building Features Include:

- Anorectal Manometry
- Pelvic Muscle Rehabilitation
- EHR Integration

See our new offerings at Booth 211

LABORIE
400 Avenue D, Suite 10,
Williston, VT 05495
1 800 522 6743
usmarketing@laborie.com
www.laborie.com



Innovation for Pelvic Health

SPECIAL INTEREST GROUP ACTIVITIES

AUGS Special Interest Groups (SIGs) serve as the primary vehicle for developing a sense of community around designated areas of interest as well as providing focused education. SIG meetings are open to all attendees.

BASIC SCIENCE SIG

Chair: Marsha K. Guess, MD
Vice Chair: Matthew Fraser, PhD

Annual Business Meeting

Tuesday, October 13, 2015
5:30 p.m. – 7:30 p.m.
Room 616

Schedule

5:30 p.m. – 5:45 p.m. Poster viewing and networking
5:45 p.m. – 5:50 p.m. Welcome and introductions
5:50 p.m. – 6:50 p.m. Oral poster presentations
6:50 p.m. – 7:30 p.m. Business meeting

The purpose of this meeting is to provide a forum for authors of basic science posters to present to a group of basic science enthusiast peers and senior scientists. This is particularly important for junior investigators (residents, fellows and junior faculty) to both hone oral presentation skills and receive feedback from fellow basic scientists. Following the presentations, the SIG will hold their annual business meeting to prepare for the upcoming year.

ADVANCED PRACTICE, PHYSICAL THERAPY AND ALLIED HEALTH SIG

Chair: Colleen E. Mellen, APRN
Vice Chair: Ingrid Harm-Ernandes, PT, WCS, BCB-PMD

Annual Business Meeting

Thursday, October 15, 2015
1:30 p.m. – 2:30 p.m.
Room 616

Lunch is being served in the Exhibit Hall at 12:30 p.m., so grab lunch prior to the meeting.

MESH/GRAFT USE IN PELVIC RECONSTRUCTIVE SURGERY SIG

Chair: Pamela Moalli, M.D., PhD
Vice Chair: Vincent Lucente, MD, FACOG

Annual Business Meeting

Thursday, October 15, 2015
1:30 p.m. – 2:30 p.m.
Room 615

Lunch is being served in the Exhibit Hall at 12:30 p.m., so grab lunch prior to the meeting.

GLOBAL HEALTH SIG

Chair: Joan L. Blomquist, MD
Vice Chair: Sharon Knight, MD

Annual Business Meeting

Friday, October 16, 2015
5:30 p.m. – 6:30 p.m.
Room 616

PRIVATE PRACTICE SIG

Chair: Richard J. Mooney, Jr., MD
Vice Chair: Jorge F. Peacher, MD

Annual Business Meeting

Friday, October 16, 2015
5:30 p.m. – 6:30 p.m.
Room 619

Poise[®]
IMPRESSA[®]
... BLADDER SUPPORTS ...

SUI treatment that's
conservative
and
or effective.

Rewrite the story in SUI treatment with
Poise[®] Imprensa[®] Bladder Supports



Visit us at booth 108
Visit ImpressaPro.com to learn more

LIVE SURGERIES

NEW THIS YEAR!

Saturday, October 17

9:00 a.m. – 12:00 p.m.

Hall 4A

For the first time at PFD Week, surgeries will be broadcast live from coast to coast featuring our nation's leading gynecologic and urologic experts performing a variety of procedures. These surgeries will feature suture-based, synthetic mesh-augmented, and native-tissue grafted reconstructive techniques for the treatment of pelvic organ prolapse and urinary incontinence. Anatomic correlates will be demonstrated using cadaveric dissections live in the auditorium with special attention paid to the pertinent anatomic landmarks around the sacrospinous ligament and sacral promontory.

"Assistant-Free" robotic sacralcolpopexy will be performed by Patrick Culligan, MD. Dr. Culligan will demonstrate numerous ways in which reliance on assistants to the primary surgeon can be minimized in this complex reconstructive surgery.

"The Michigan Four-Wall" sacrospinous suspension will be performed by John DeLancey, MD, world-renowned pelvic anatomist and surgeon. Dr. DeLancey will demonstrate his time-tested technique for a transvaginal, suture-based repair of post-hysterectomy vaginal prolapse.

"Autologous Fascia Lata" pubovaginal sling will be performed by Shlomo Raz, MD, a leading expert in the field of Female Urology. Dr. Raz will perform harvesting of a fascia lata graft from a patient that he will then use to treat her stress urinary incontinence.

Marlene Corton, MD, will be live in the auditorium demonstrating pertinent anatomic correlates with a full pelvis and a sagittal hemi-pelvis. Special attention will be given to the anatomic pitfalls that can confound surgeons in their attempt to utilize the anterior longitudinal ligament of the sacrum and the sacrospinous ligament to re-suspend prolapsed pelvic organs.

Comprehensive Review Course in Female Pelvic Medicine and Reconstructive Surgery

March 18 – 19, 2016 | Omni Fort Worth Hotel, Fort Worth, TX

Join leading experts for an extensive review of FPMRS.

Attend this course for a comprehensive review and to efficiently prepare for the FPMRS Subspecialty Board Exam.

Topics include:

- ABOG/ABU Guide to Learning for the Subspecialty
- New Developments in FPMRS
- Applicable Clinical Issues



Course Director

J. Eric Jelovsek, MD, MMED
Cleveland Clinic

Registration opens December 2015

For program information, visit
www.reviewcourse.augs.org

FPMRS Question Bank

Practice questions with a yearly subscription.

WORKSHOP SCHEDULE

Workshops require a separate registration. Tickets will be collected by AUGS staff at the workshop entrance.

Tuesday, October 13

8:00 a.m. – 5:00 p.m.

PT 101: Helping Physicians and Advanced Practitioners Understand Physical Therapy Musculoskeletal Assessment and Treatment

Ingrid Harm-Ernandes PT, WCS, BCB-PMD; Alexandra Hill, PT, DPT, CLT; Elizabeth Hartmann, PT, DPT; Katherine Ann Wallace, PT, BCB-PMD

Room 606

8:00 a.m. – 5:00 p.m.

Program Directors' Workshop: Preparing for Your Site Visit

Sylvia Botros-Brey, MD; Vivian Aguilar, MD; Linda Brubaker, MD, MS; AnnaMarie Connolly, MD; Gena Dunivan, MD; Kimberly Kenton, MD, MS; Felicia Lane, MD; Mary Joyce Turner, RHIA, MJ; George Wendel, MD

Room 616

8:00 a.m. – 5:00 p.m.

Making Sense of Interdisciplinary Care for the Treatment of Pelvic Pain Caused by Mesh Surgery

Carina Siracusa Majzun, PT, DPT; MJ Strauhal, PT, DPT, BCB-PMD; Mary McVeary, PT, DPT, WCS; Lora "Lori" Mize, PT, DPT, WCS

Room 607

8:00 a.m. – 12:00 p.m.

Laparoscopic and Robotic Pelvic Reconstructive Surgery

Eric R. Sokol, MD; Marie Paraiso, MD; John Miklos, MD; M. Jonathan Solnik, MD

Room 608

8:00 a.m. – 12:00 p.m.

Defining Your Value through Quality Measurement and Improvement

Rony Adam, MD; Samantha Pulliam, MD; Elisabeth Erekson, MD, MPH; Jill Rathbun

Room 609

1:00 p.m. – 5:00 p.m.

Urology for the Urogynecologist: Evaluation and Management of Neurogenic Bladder, Urethral Stricture, and Genitourinary Operative Trauma

Craig Comiter, MD; Christopher Elliott, PhD, MD; Polina Reyblat, MD

Room 608

1:00 p.m. – 5:00 p.m.

FPMRS Quality Improvement Bootcamp

Robert Flora, MD, MBA, MPH; John Fischer, MD; Steven Swift, MD

Room 609

Wednesday, October 14

8:00 a.m. – 6:00 p.m.

FPMRS Fellows' Research Day

Ballroom 6E

8:00 a.m. – 12:00 p.m.

Advanced Practice, Physical Therapy and Allied Health (APPTAH) SIG Bootcamp: Pelvic Pain and Sexual Dysfunction Related to PFDs

Colleen Mellen, MS, CNS, APRN; Heather Jeffcoat, DPT; Nazema Siddiqui, MD, HSC; Julie Starr, APRN, FNP-BC

Breakout Session Faculty: Ingrid Harm-Ernandes, PT, WCS, BCB-PMI; Elizabeth Hartmann, PT, DPT; Jan Baker, APRN; Katherine Ann Wallace, PT, BCB-PMI; Leah Moynihan, MSN; Katherine O'Dell, PhD, WHNP-BC, CMN(ret.); Stacey Head, PT, WCS, CLT, ATC, RYT-200

Room 606

This continuing nursing education activity was approved by American Nephrology Nurses' Association, an accredited approver by the American Nurses Credentialing Center's Commission on Accreditation.

8:00 a.m. – 12:00 p.m.

Evaluation and Management of Common Female Urological Concerns

Suzette E. Sutherland, MD, MS; Una Lee, MD; Jane Miller, MD;
Claire Yang, MD

Room 607

8:00 a.m. – 12:00 p.m.

Practical Applications for Pelvic Floor Ultrasound: Hands On Approach

S. Abbas Shobeiri, MD; Lieschen Quiroz, MD; Ghazaleh Rostaminia,
MD, MSC

Room 608

8:00 a.m. – 12:00 p.m.

Laparoscopic and Robotic Sacrocolpopexy: Tips, Tricks, and Video Clips

Patrick Culligan, MD; Catherine Matthews, MD; Peter Rosenblatt,
MD

Room 611

8:00 a.m. – 12:00 p.m.

A Day in the Life of a Urogynecologist: The Financial Side of Medicine: Business Planning, Optimizing Work Time, Coding, ICD-10, and More!

Lora Plaskon, MD; Brad Hart, MBA, MS, CMPE, CPC, COBGC;
Mitchell Schuster, MD, FACOG, FACS

Room 609

1:00 p.m. – 5:00 p.m.

The Private Practice of Urogynecology

Richard Mooney, MD; Vincent Lucente, MD, FACOG; Kurian Thott,
MD, FACOG; C. Sage Claydon, MD

Room 607

1:00 p.m. – 5:00 p.m.

Multimodal Pain Therapy to More Effectively Address Post-Operative Pain

Mikio Nihira, MD, MPH, FACOG, FACS; Adam Steinberg, DO, FACOG,
FACS; Lieschen Quiroz, MD

Room 606

1:00 p.m. – 5:00 p.m.

The Original Minimally Invasive Hysterectomy: All That You Wanted to Know About the Benefits and “How To” Do a Vaginal Hysterectomy

Emanuel C. Trabuco, MD, MS; John Occhino, MD, MS

Room 608

1:00 p.m. – 5:00 p.m.

Getting Your Manuscript Published

Ingrid Nygaard, MD, MS; Linda Brubaker, MD, MS

Room 611

1:00 p.m. – 5:00 p.m.

An Evidence-Based Approach to the Management of Accidental Bowel Leakage

Catherine Matthews, MD; Dee Fenner, MD; Tristi Muir, MD;
Holly Richter, PhD, MD

Room 609

10 Years of Surgical Videos: Greatest Hits

WEDNESDAY, OCTOBER 14

3:00 P.M.-5:00 P.M.

FREE BONUS SESSION!

Ballroom A

10 Years of Surgical Videos: Greatest Hits - After checking in to your hotel, join your colleagues to watch some of the best AUGS videos of the past decade. Presenters of the original videos will be in attendance to answer questions and lead discussion after viewing select videos from past AUGS meetings. Additionally, a flash drive with all videos shown, is available for purchase. Attendance is not required to purchase the flash drive. Advanced registration is not required to attend.

FPMRS FELLOWS' RESEARCH DAY

We are pleased to provide a full day of complimentary education to fellows during PFD Week 2015. Pre-registration is required. Visit the Attendee Service desk for more details. All events are taking place in Ballroom 6E.

Wednesday, October 14

BREAKFAST

8:00 a.m. – 8:30 a.m.

FELLOWS' FORUM

8:30 a.m. – 11:30 a.m.

An opportunity for OB/GYN and Urology Fellows from across the country to meet one another and present their scientific work in a fellows-only podium session.

NETWORKING LUNCH

11:30 a.m. – 12:30 p.m.

RESEARCH EDUCATION SESSION

12:30 p.m. – 2:30 p.m.

Learn from research experts in the field of FPMRS. There will be a didactic session on incorporating research into your career followed by roundtable discussions on the following topics:

- Grant Opportunities
- Study Design
- Biostatistics
- Basic Science/Translational Research
- Research in your Career
- Grant Writing

AUGS-SGS FELLOWS' PELVIC RESEARCH NETWORK

3:00 p.m. – 6:00 p.m.

The Fellows' Pelvic Research Network (FPRN) will host an in-person meeting during Fellows' Day. The network enables fellows to work together cooperatively and conduct multi-center pelvic floor research projects. This network is open to all fellows in Female Pelvic Medicine and Reconstructive Surgery. Interested fellows from accredited and non-accredited programs across the United States and Canada are welcome to attend this meeting. All members of the network will have the opportunity to be actively involved in developing, implementing, conducting, and publishing research studies.

FELLOWS' DAY IS SUPPORTED BY:

Allergan

American Medical Systems

Astellas

Boston Scientific

Coloplast

Ethicon

Intuitive Surgical

LABORIE

Medtronic, Inc.

Returning in 2015, AUGS is featuring a lounge exclusively for Fellows in the Exhibit Hall. Visit the fellows' lounge in booth 121 and take advantage of this opportunity to network with your peers and make connections in the field.

SCIENTIFIC PROGRAM

Wednesday, October 14

12:00 p.m. – 1:00 p.m.

AUGS Member Volunteer Appreciation Luncheon (Invitation Only)

Room: 619

12:00 p.m. – 1:00 p.m.

**Industry Supported Education*

Diagnosis and Management of Overactive Bladder

Supported by Astellas Pharma US, Inc.
(Lunch is provided)

Ballroom 6C

12:00 p.m. – 1:00 p.m.

**Industry Supported Education*

Evidence-based Innovation in the Surgical Management of SUI

Supported by Coloplast
(Lunch is provided)

Ballroom 6A

3:00 p.m. – 5:00 p.m.

10 Years of Surgical Videos: Greatest Hits

Ballroom 6A

5:30 p.m. – 7:30 p.m.

Welcome Reception in the Exhibit Hall

Room 4B

Thursday, October 15

6:45 a.m. – 7:45 a.m.

Meet the Experts Educational Roundtables (Pre-Registration Required)

See page 44 for more information

Room 606

6:45 a.m. – 7:45 a.m.

**Industry Supported Education*

Moving Patients Along the Overactive Bladder Treatment Paradigm

Supported by Allergan
(Breakfast is provided)

Room 608-609

8:00 a.m. – 9:30 a.m.

Opening General Scientific Session

Hall 4A

Moderators: Matthew Barber MD, MHS;
Vivian Sung MD, MPH

8:00 a.m. – 8:10 a.m.

Welcome – Miles Murphy, MD, MPH, Program Committee Chair

8:10 a.m. – 8:21 a.m.

Paper 1 - MULTIMODAL PAIN PATHWAY: DECREASING POSTOPERATIVE NARCOTICS IN ADVANCED PELVIC SURGERY, A RANDOMIZED TRIAL

K. M. Reagan¹, D. M. O'Sullivan², A. C. Steinberg¹. ¹Female Pelvic Medicine and Reconstructive Surgery, Hartford Hospital, Hartford, CT; ²Research Administration, Hartford Hospital, Hartford, CT

8:21 a.m. – 8:32 a.m.

Paper 2 - EVALUATION OF ASYMPTOMATIC MICROSCOPIC HEMATURIA AND THE RISK OF URINARY TRACT MALIGNANCY IN WOMEN

Q. K. Lippmann¹, J. M. Slezak², R. K. Loo³, M. E. Koski⁴, C. K. Ng³, S. A. Menefee¹. ¹Obstetrics and Gynecology, Kaiser Permanente San Diego, San Diego, CA; ²Research and Evaluation, Kaiser Permanente Southern California, Pasadena, CA; ³Urology, Southern California Permanente Medical Group, Los Angeles, CA; ⁴Urology, Southern California Permanente Medical Group, San Diego, CA

8:32 a.m. – 8:43 a.m.

Paper 3 - DURABLE IMPROVEMENTS IN URINARY INCONTINENCE AND POSITIVE TREATMENT RESPONSE IN FEMALE PATIENTS WITH OVERACTIVE BLADDER SYNDROME FOLLOWING LONG-TERM ONABOTULINUMTOXINA TREATMENT: FINAL RESULTS OF 3.5-YEAR STUDY

P. Sand¹, T. Rechberger², C. James³, A. Magyar⁴, V. Khullar⁵. ¹Evanston Continence Center, Evanston, IL; ²Medical University, Lublin, Poland; ³Allergan Holdings Ltd., Marlow, United Kingdom; ⁴Allergan, Inc., Bridgewater,

NJ; ⁵Imperial College London, London, United Kingdom

8:43 a.m. – 8:54 a.m.

Paper 4 - EFFECT OF THE FIRST DELIVERY ON DEVELOPMENT OF STRESS URINARY INCONTINENCE

I. Urbankova¹, K. Grohregin, M. Krcmar, L. Krofta, J. Feyereisl. Institute for the Care of Mother and Child, Prague⁴, Czech Republic

8:54 a.m. – 9:05 a.m.

Paper 5 - GENETIC INFLUENCE ON RISK FACTORS FOR PELVIC ORGAN PROLAPSE

K. Allen-Brady¹, L. Cannon-Albright¹, P. Norton². ¹Internal Medicine, University of Utah, Salt Lake City, UT; ²Obstetrics & Gynecology, University of Utah, Salt Lake City, UT

9:05 a.m. – 9:16 a.m.

Paper 6 - DOUBLE-BLIND RANDOMIZED CONTROLLED TRIAL OF MIRALAX[®] VERSUS PLACEBO TO PREVENT CONSTIPATION FOLLOWING UROGYNECOLOGIC SURGERY IN WOMEN RECEIVING ROUTINE DUCUSATE SODIUM

A. L. Edenfield³, N. Y. Siddiqui³, J. Wu¹, A. A. Dieter³, M. Garrett², A. G. Visco³. ¹Department of Ob/GYN, University of North Carolina, Chapel Hill, Chapel Hill, NC; ²Department of Gastroenterology, Duke University, Durham, NC; ³Department of Ob/GYN, Duke University, Durham, NC

9:16 a.m. – 9:29 a.m.

Video 1 - VAGINAL HYSTERECTOMY AND UTEROSACRAL LIGAMENT COLPOPEXY: A VIEW FROM ABOVE

L. N. Siff¹, K. Jallad, M. D. Walters. Urogynecology, Cleveland Clinic Foundation, Cleveland, OH

9:30 a.m. – 10:00 a.m.

Presidential Address

Amy Rosenman, MD

Hall 4A

SCIENTIFIC PROGRAM

Thursday, October 15 (Continued)

10:00 a.m. – 10:30 a.m.

Jack Robertson Lifetime Achievement Award

Presented to: Dee Fenner, MD
Hall 4A

10:30 a.m. – 11:00 a.m.

Break in the Exhibit Hall

Exhibit Hall 4B/ South Lobby

11:00 a.m. – 12:30 p.m.

Scientific Concurrent Session 1 – Surgical/Clinical

Ballroom 6B

Moderators: Halina Zyczynski, MD;
Vincent Lucente, MD, MBA, FACOG

11:00 a.m. – 11:11 a.m.

Paper 7 - SEXUAL FUNCTION AND PRACTICES AMONG WOMEN USING A PESSARY FOR PELVIC FLOOR DISORDERS

K. V. Meriwether¹, R. G. Rogers¹, C. Qualls², H. Davis², S. Peterson³, Y. M. Komesu¹. ¹Obstetrics & Gynecology, University of New Mexico, Albuquerque, NM; ²Department of Biostatistics, University of New Mexico, Albuquerque, NM; ³School of Human Medicine, University of New Mexico, Albuquerque, NM

11:11 a.m. – 11:22 a.m.

Paper 8 - REOPERATION FOR RECURRENT STRESS URINARY INCONTINENCE FOLLOWING MIDURETHRAL SLING REVISION; A RETROSPECTIVE COHORT STUDY

J. Shaw, K. Wohlrab, C. R. Rardin. Urogynecology, Brown University, Providence, RI

11:22 a.m. – 11:33 a.m.

Paper 9 - IF YOU COULD SEE WHAT WE SEE, WOULD IT BOTHER YOU?

N. Kassis¹, J. J. Hamner², M. M. Takase-Sanchez³, W. Khoder³, D. S. Hale³, M. Heit³. ¹Urogynecology, Toledo Clinic Inc., Toledo, OH; ²Obstetrics

and Gynecology, Indiana University, Indianapolis, IN; ³Urogynecology Associates, Indianapolis, IN

11:33 a.m. – 11:44 a.m.

Paper 10 - A MULTICENTER, PROSPECTIVE, RANDOMIZED, CONTROLLED, CROSS-OVER STUDY TO ASSESS CHANGES IN VAGINAL MICROFLORA WHILE USING A NOVEL NON-ABSORBING INTRA-VAGINAL DEVICE IN THE TEMPORARY MANAGEMENT OF STRESS URINARY INCONTINENCE (SUI) IN WOMEN

E. Ziv¹, T. Erlich², N. Keller³. ¹Gynecology-Hertzelia, Ramat Gan, Israel; ²ConTIPI Medical Ltd, Caesarea, Israel; ³Clinical Microbiology, The Chaim Sheba Medical Center, Ramat Gan, Israel

11:44 a.m. – 11:55 a.m.

Paper 11 - FALSE NEGATIVES OF STANDARD URINE CULTURES MAY DELAY PATIENT TREATMENT

T. Dune¹, E. E. Hilt², T. K. Price², L. Brubaker¹, C. Brincat¹, A. J. Wolfe², P. C. Schreckenberger³, E. R. Mueller¹. ¹Female Pelvic Medicine and Reconstructive Surgery, Loyola University Chicago Stritch School of Medicine, Maywood, IL; ²Microbiology and Immunology, Loyola University Chicago Stritch School of Medicine, Maywood, IL; ³Microbiology and Pathology, Loyola University Chicago Stritch School of Medicine, Maywood, IL

11:55 a.m. – 12:06 p.m.

Paper 12 - ANAL SPHINCTER INJURIES AFTER SPONTANEOUS VS OPERATIVE DELIVERY - IS THERE A DIFFERENCE IN POSTPARTUM SYMPTOMS?

B. Dave, A. Leader-Cramer, M. G. Mueller, L. Johnson, K. Kenton, C. Lewicky-Gaupp. OB/GYN, Division of FPMRS, Northwestern University Feinberg School of Medicine, Chicago, IL

12:06 p.m. – 12:21 p.m.

[Papers 13 and 14 are combined]

Paper 13 - LEVATOR ANI SUBTENDED VOLUME (LASV): A NOVEL ASSAY FOR PREDICTING SURGICAL FAILURE AFTER UTEROSACRAL LIGAMENT SUSPENSION

A. M. Wyman¹, A. Rodrigues Jr³, L. Hahn¹, K. Greene², R. Bassaly¹, S. Hart¹, B. Miladinovic⁴, L. Hoyte¹. ¹Division of Female Pelvic Medicine and Reconstructive Surgery, University of South Florida, Tampa, FL; ²Division of Female Pelvic Medicine and Reconstructive Surgery, Emory University, Atlanta, GA; ³University of São Paulo, Department of Surgery, Sao Paulo, Brazil; ⁴University of South Florida, Tampa, FL

Paper 14 - ESTIMATED LASV AS A CLINICAL PREDICTOR FOR SURGICAL FAILURE IN UTEROSACRAL LIGAMENT SUSPENSION: AN INTRA-OBSERVER REPEATABILITY ANALYSIS

A. M. Wyman¹, A. Rodrigues Jr³, L. Hahn¹, K. Greene², R. Bassaly¹, S. Hart¹, B. Miladinovic¹, L. Hoyte¹. ¹Division of Female Pelvic Medicine and Reconstructive Surgery, University of South Florida, Tampa, FL; ²University of São Paulo, Department of Surgery, Sao Paulo, Brazil; ³Division of Female Pelvic Medicine and Reconstructive Surgery, Emory University, Atlanta, GA

12:21 p.m. – 12:27 p.m.

Tip and Trick - ASSESSING URETERAL PATENCY: USING D50 AS A VISUALIZATION MEDIUM IN CYSTOSCOPY

S. Henderson, R. R. Stratford. Obstetrics and Gynecology, Banner - University Medical Center, Phoenix, Phoenix, AZ

11:00 a.m. – 12:30 p.m.

**Scientific Concurrent Session 2 –
Basic Science**

Ballroom 6A

Moderators: R. Ann Word, MD; Marsha K. Guess, MD

11:00 a.m. – 11:11 a.m.

**Paper 15 - PREGNANCY INDUCED
ADAPTATIONS IN INTRAMUSCULAR
EXTRACELLULAR MATRIX OF PELVIC
FLOOR MUSCLES**

M. Alperin¹, D. M. Lawley¹, R. Pichika², R. L. Lieber³. ¹Reproductive Medicine, Division of FPMRS, University of California, San Diego, La Jolla, CA; ²Orthopaedic Surgery, University of California, San Diego, San Diego, CA; ³Rehabilitation Institute of Chicago, Chicago, IL

11:11 a.m. – 11:22 a.m.

**Paper 16 - SIGNIFICANT LINKAGE
EVIDENCE FOR EARLY ONSET POP
ON CHROMOSOME 11**

K. Allen-Brady¹, L. Cannon-Albright¹, P. Norton². ¹Internal Medicine, University of Utah, Salt Lake City, UT; ²Obstetrics & Gynecology, University of Utah, Salt Lake City, UT

11:22 a.m. – 11:33 a.m.

**Paper 17 - IMPACT OF A
REGENERATIVE BIOLOGIC SCAFFOLD
ON VAGINAL STRUCTURE AND
FUNCTION**

R. Liang, A. L. Nolfi, S. Palcsey, Z. Jallah, W. Barone, K. Knight, S. D. Abramowitch, P. Moalli. University of Pittsburgh, Pittsburgh, PA

11:33 a.m. – 11:44 a.m.

**Paper 18 - CELL THERAPY
FOR NEUROGENIC DETRUSOR
OVERACTIVITY**

M. O. Fraser¹, J. M. Brooks², D. J. Degoski², P. C. Dolber³. ¹Surgery / Research and Development, Duke and Durham VA Medical Centers, Durham, NC; ²Institute for Medical Research,

Durham, NC; ³University of Texas Medical Branch, Galveston, TX

11:44 a.m. – 11:55 a.m.

**Paper 19 - URGENCY URINARY
INCONTINENCE AND THE
INTEROCEPTIVE NETWORK: BRAIN
RESPONSES TO URGE PERCEPTION**

Y. M. Komesu¹, L. H. Ketai², R. G. Rogers¹, A. R. Mayer³, A. B. Dodd³, J. M. Ling³. ¹Ob-Gyn, University of New Mexico Health Sciences Center, Albuquerque, NM; ²Radiology, University of New Mexico Health Sciences Center, Albuquerque, NM; ³Neurosciences, Mind Research Network, Albuquerque, NM

11:55 a.m. – 12:06 p.m.

**Paper 20 - LONG TERM BIOSAFETY
OF HUMAN INDUCED PLURIPOTENT
STEM CELLS**

B. Chen, Z. Wang, F. Zhu, B. Sun, Y. Wen, Y. Wei, E. K. Cabral, R. A. Reijo Pera. OBGYN, Stanford University School of Medicine, Palo Alto, CA

12:06 p.m. – 12:17 p.m.

**Paper 21 – EFFECTS OF AGING
UPON THE HOST RESPONSE TO
POLYPROPYLENE MESH**

B. N. Brown, D. Hachim, D. Mani, S. T. LoPresti. Bioengineering, University of Pittsburgh, Pittsburgh, PA

12:17 p.m. – 12:28 p.m.

**Paper 22 - THE FEMALE URINARY
MICROBIOTA RELATES TO
INCONTINENCE MEDICATION
EFFICACY**

A. J. Wolfe¹, K. J. Thomas-White¹, E. E. Hilt¹, C. Fok², M. Pearce¹, E. R. Mueller³, S. Kliethermes⁴, K. M. Jacobs⁵, M. J. Zilliox⁶, C. Brincat³, T. K. Price¹, G. Kuffel⁷, P. C. Schreckenberger⁸, X. Gai⁹, L. Brubaker³. ¹Microbiology and Immunology, Loyola University Chicago, Chicago, IL; ²Urology, University of Minnesota, Minneapolis, MN; ³Obstetrics & Gynecology and

Urology, Loyola University Chicago, Maywood, IL; ⁴Medicine and Public Health Sciences, Loyola University Chicago, Maywood, IL; ⁵Obstetrics & Gynecology, Loyola University Chicago, Maywood, IL; ⁶Public Health Sciences, Loyola University Chicago, Maywood, IL; ⁷Center for Biomedical Informatics, Loyola University Chicago, Maywood, IL; ⁸Pathology, Loyola University Chicago, Maywood, IL; ⁹Ophthalmology, Harvard Medical School, Boston, MA

11:00 a.m. – 12:30 p.m.

**Scientific Concurrent Session 3 –
Epidemiology/Quality of Life**

Ballroom 6C

Moderators: Rebecca Rogers, MD; Jerry Lowder, MD, MSc.

11:00 a.m. – 11:11 a.m.

**Paper 23 - A RANDOMIZED
COMPARATIVE STUDY CORRELATING
COUGH STRESS TEST WITH
URODYNAMICS AND 24 HOUR
PAD TEST IN THE EVALUATION OF
STRESS URINARY INCONTINENCE**

J. W. Henderson¹, S. Kane³, J. Mangel², J. Garibay², E. Kikano¹, R. Pollard², S. T. Mahajan¹, A. Hijaz¹. ¹University Hospitals Case Medical Center, Cleveland, OH; ²MetroHealth, Cleveland, OH; ³Norton Women's Specialists, Louisville, KY

11:11 a.m. – 11:22 a.m.

**Paper 24 - THE PREVALENCE OF
COGNITIVE IMPAIRMENT IN WOMEN
OVER AGE 55 PRESENTING FOR
TREATMENT OF PELVIC FLOOR
DISORDERS**

C. M. Kunkle¹, M. Abernethy¹, L. R. Van Tongeren¹, T. B. Fashokun¹, E. J. Wright³, V. L. Handa¹, J. L. Blomquist², C. Chen¹. ¹Gynecology and Obstetrics, Johns Hopkins University, Baltimore, MD; ²Gynecology and Obstetrics, Greater Baltimore Medical Center, Baltimore, MD; ³Urology, Johns Hopkins University, Baltimore, MD

SCIENTIFIC PROGRAM

Thursday, October 15 (Continued)

11:22 a.m. – 11:33 a.m.

Paper 25 - CARE-SEEKING FOR STRESS INCONTINENCE AND OVERACTIVE BLADDER AMONG PAROUS WOMEN

J. Fitzgerald¹, J. M. Nugent¹, C. Pierce², J. Blomquist³, V. L. Handa¹.
¹Gynecology and Obstetrics, Johns Hopkins, Baltimore, MD; ²Johns Hopkins Bloomberg School of Public Health, Baltimore, MD; ³Urogynecology, Greater Baltimore Medical Center, Baltimore, MD

11:33 a.m. – 11:44 a.m.

Paper 26 - AUTONOMIC INNERVATION OF THE PELVIS IN UNEMBALMED FEMALE CADAVERS: CLINICAL APPLICATIONS TO PELVIC SURGERY

C. Ripperda¹, L. A. Jackson¹, J. Phelan², K. Carrick³, M. Corton¹.
¹Obstetrics and Gynecology, University of Texas Southwestern Medical Center, Dallas, TX; ²Anatomy and Cell Biology, University of Texas Southwestern Medical Center, Dallas, TX; ³Pathology, University of Texas Southwestern Medical Center, Dallas, TX

11:44 a.m. – 11:55 a.m.

Paper 27 - THE PATIENT VOICE IN DEFINING OUTCOMES FOR PELVIC ORGAN PROLAPSE (POP)

C. B. Iglecia¹, V. W. Sung², M. Lavender³, S. Palm⁴, E. Myers⁵. ¹ObGyn and Urology, MedStar Washington Hospital Center and Georgetown University School of Medicine, Washington, DC; ²Women's and Infants' Hospital of Rhode Island, Providence, RI; ³Women's Health Foundation, Chicago, IL; ⁴Association for Pelvic Organ Prolapse Support, Mukwonago, WI; ⁵Duke University Medical Center, Durham, NC

11:55 a.m. – 12:06 p.m.

Paper 28 - DECREASE IN HEALTH RESOURCE UTILIZATION FOLLOWING TOPAS® TREATMENT FOR FECAL INCONTINENCE

D. E. Fenner¹, M. Zutshi², V. Lucente⁵, M. A. Nihira³, P. Culligan⁶, A. Mellgren⁴.
¹OBGYN, University of Michigan, Ann Arbor, MI; ²Colorectal Surgery, Cleveland Clinic, Cleveland, OH; ³OBGYN, University of Oklahoma, Oklahoma City, OK; ⁴Surgery, University of Illinois, Chicago, IL; ⁵Institute of FPM, Allentown, PA; ⁶Mount Sinai, New York, NY

12:06 p.m. – 12:17 p.m.

Paper 29 - PATIENT SATISFACTION AND REGRET WITH DECISION DIFFER BETWEEN OUTCOMES IN THE COMPOSITE DEFINITION OF SUCCESS AFTER RECONSTRUCTIVE SURGERY

W. Khoder¹, E. Hom², A. Guanzon², S. Rose², D. S. Hale¹, M. Heit¹.
¹Female Pelvic Medicine and Reconstructive Surgery, Indiana University, Indianapolis, IN; ²Obstetrics and Gynecology, Indiana University, Indianapolis, IN

12:17 p.m. – 12:28 p.m.

Paper 30 - THE EFFECT OF MAJOR DEPRESSION ON QUALITY OF LIFE AFTER SURGICAL MANAGEMENT OF STRESS URINARY INCONTINENCE: A SECONDARY ANALYSIS OF THE TRIAL OF MID-URETHRAL SLINGS (TOMUS TRIAL)

L. N. Siff, J. E. Jelovsek, M. D. Barber.
 Urogynecology, Cleveland Clinic Foundation, Cleveland, OH

12:30pm – 2:00pm

PFD Research Foundation Grant Recipients' Luncheon (Invitation Only)

Room 619-620

12:30 p.m. – 2:30 p.m.

Lunch in the Exhibit Hall

Hall 4B

12:30 p.m. – 1:30 p.m.

**Industry Supported Education*

Neuromodulation – Putting Data into Practice

*Supported by Medtronic
 (Lunch is provided)
 Room 608-609*

12:30 p.m. – 1:30 p.m.

**Industry Supported Education*

Industry Supported Education: Regeneration and Reinforcement: Two Goals of the Xenform™ Soft Tissue Repair Matrix Biologic Graft

*Supported by Boston Scientific
 (Lunch is provided)
 Room 606-607*

1:30 p.m. – 2:30 p.m.

Mesh/Graft use in Pelvic Reconstructive Surgery SIG Meeting

Room 615

1:30 p.m. – 2:30 p.m.

Advanced Practice, Physical Therapy, Allied Health SIG Meeting

Room 616

2:30 p.m. – 3:45 p.m.

General Scientific Session

Hall 4A

Moderators: Patrick Culligan, MD; Marie Fidela Paraiso, MD

2:30 p.m. – 2:41 p.m.

Paper 31 - THE IMPACT OF ACUTE AND CHRONIC STRENUOUS EXERCISE ON PELVIC FLOOR MUSCLE STRENGTH AND SUPPORT IN NULLIPAROUS HEALTHY WOMEN

M. L. Middlekauff¹, M. J. Egger³, I. Nygaard², J. M. Shaw¹. ¹Exercise and Sport Science, University of Utah, Salt Lake City, UT; ²Urogynecology, University of Utah, Salt Lake City, UT; ³Family and Preventive Medicine, University of Utah, Salt Lake City, UT

2:41 p.m. – 2:52 p.m.

Paper 32 - PREDICTING RISK OF URINARY INCONTINENCE AND ADVERSE EVENTS 12 MONTHS AFTER MIDURETHRAL SLING SURGERY

A. J. Hill², J. E. Jelvosek², K. M. Chagin¹, M. W. Kattan¹, M. D. Barber².
¹Quantitative Health Sciences, Cleveland Clinic, Cleveland, OH; ²Urogynecology and Reconstructive Pelvic Surgery, Cleveland Clinic, Cleveland, OH

2:52 p.m. – 3:03 p.m.

Video 2 - NATIVE TISSUE ANTERIOR REPAIR: KEY STEPS FOR A SUCCESSFUL OUTCOME

C. W. Swenson, D. E. Fenner, J. O. DeLancey. Obstetrics and Gynecology, University of Michigan, Ann Arbor, MI

3:03 p.m. – 3:14 p.m.

Paper 33 - BLADDER MUCOSA RESPONDS DIFFERENTLY THAN DETRUSOR SMOOTH MUSCLE TO DEPOLARIZING STIMULUS - A NEW BLADDER REFLEX?

A. Russo², D. Martin¹, T. C. Chai¹.
¹Urology, Yale University, New Haven, CT; ²Urogynecology, Yale University, New Haven, CT

3:14 p.m. – 3:25 p.m.

Paper 34 - TREATMENT OF INTERSTITIAL CYSTITIS/BLADDER PAIN SYNDROME (IC/BPS) IN WOMEN WITH AF-219, AN ANTAGONIST OF P2X3 RESULTED IN A REDUCTION IN URINARY URGENCY AND PAIN

J. Mangel², M. Kitt¹, R. Moldwin³, R. Beyer⁴, P. Hanno⁵, P. Butera¹, A. P. Ford¹. ¹Afferent Pharmaceuticals, Inc., San Mateo, CA; ²Division of Urogynecology and Reconstructive Pelvic Surgery, The MetroHealth System, Cleveland, OH; ³Pelvic Pain Treatment Center, The Arthur Smith Institute for Urology, North Shore-LIJ

Healthcare System, New Hyde Park, NY; ⁴Women's Health Care Specialist, Kalamazoo, MI; ⁵Urology, University of Pennsylvania Health System, Philadelphia, PA

3:25 p.m. – 3:36 p.m.

Paper 35 - INCIDENCE OF OCCULT UTERINE PATHOLOGY IN WOMEN UNDERGOING HYSTERECTOMY AND SURGICAL REPAIR OF PELVIC ORGAN PROLAPSE

M. F. Ackenbom, L. E. Giugale, Y. Wang, J. P. Shepherd. Obstetrics and Gynecology, University of Pittsburgh Medical Center, Pittsburgh, PA

3:36 p.m. – 3:46 p.m.

Video 3 - RECURRENT APICAL PROLAPSE AFTER LAPAROSCOPIC SACROCOLPOPEXY: WHERE DID IT GO WRONG?

E. Von Bargaen, P. Rosenblatt. Female Pelvic Medicine and Reconstructive Surgery, Mount Auburn Hospital, Cambridge, MA

3:45 p.m. – 4:15 p.m.

Raymond A. Lee Lecture: Vincent Lucente, MD, MBA, FACOG, FPMRS Achieving Surgical Excellence...No Crystal Star

Supported by the Raymond A. Lee Endowment
Hall 4A

4:15 p.m. – 5:00 p.m.

AUGS Research Update and Business Meeting

Join AUGS at the Research Update and Business Meeting as we recognize our award winners and outgoing leaders and for the latest information on the PFD Registry, the AUGS research networks, and research findings from the Systematic Review Subcommittee.

Hall 4A

- Systematic Review Subcommittee presentation on Risk of Urinary Tract Malignancy Among Adult Women with Microscopic Hematuria
- Two AUGS Quality Network Research Project Updates
- AUGS-SGS Fellows Pelvic Research Network Updates

5:00 p.m. – 6:00 p.m.

Exhibit Hall Happy Hour

Hall 4B

7:00 p.m. – 9:00 p.m.

President's Reception (Invitation Only)

Space Needle

Friday, October 16

6:45 a.m. – 7:45 a.m.

Meet the Experts Educational Roundtables (Pre-Registration Required)

See page 44 for more information

Room 606

6:45 a.m. – 7:45 a.m.

***Industry Supported Education**

A Novel Non-Surgical OTC Treatment Option for Stress Urinary Incontinence (SUI)

Supported by Kimberly-Clark (Breakfast is provided)

Room 608-609

8:00 a.m. – 9:30 a.m.

General Scientific Session

Hall 4A

Moderators: Karen Noblett, MD; Michael Heit, MD, PhD

8:00 a.m. – 8:11 a.m.

Paper 36 - A RANDOMIZED, CONTROLLED CLINICAL TRIAL OF AN INTRAVESICAL PRESSURE-ATTENUATION BALLOON SYSTEM FOR THE TREATMENT OF STRESS URINARY INCONTINENCE IN FEMALES

G. A. Tommaselli¹, J. Wyndaele², S. De Wachter², R. Angiolini³, M. de

SCIENTIFIC PROGRAM

Friday, October 16 (Continued)

Wildt⁴, K. Everaert⁵, D. Michielsen⁶, G. Van Koeveeringe⁷. ¹Università Degli Studi Di Napoli "Federico II", Naples, Italy; ²University of Antwerp, Antwerp, Belgium; ³Università di Roma Campus Biomedico, Rome, Italy; ⁴Catharina Ziekenhuis, Eindhoven, Netherlands; ⁵Gent University Hospital, Gent, Belgium; ⁶UZBrussel, Brussels, Belgium; ⁷Maastricht University Medical Centre, Maastricht, Netherlands

8:11 a.m. – 8:22 a.m.

Paper 37 - EFFECTS OF PHYSICAL THERAPY ON PELVIC FLOOR SYMPTOMS AND QUALITY OF LIFE IN POSTPARTUM WOMEN FOLLOWING SEVERE PERINEAL TRAUMA: A RANDOMIZED CONTROLLED TRIAL

S. H. Oakley¹, V. C. Ghodsi², C. C. Crisp¹, M. V. Estanol³, L. B. Westermann¹, K. M. Novicki⁴, S. D. Kleeman¹, R. N. Pauls¹. ¹Division of Female Pelvic Medicine and Reconstructive Surgery, TriHealth Good Samaritan Hospital, Cincinnati, OH; ²Hatton Research Institute, TriHealth, Cincinnati, OH; ³Division of Urogynecology, Beaumont Medical Center, Royal Oak, MI; ⁴Center for Pelvic Floor and Core Rehabilitation, Cincinnati, OH

8:22 a.m. – 8:33 a.m.

Paper 38 - PROMOTING TISSUE INTEGRATION VIA RELEASE OF IL-4 FROM THE SURFACE OF POLYPROPYLENE MESH

B. N. Brown, D. Hachim, S. T. LoPresti. Bioengineering, University of Pittsburgh, Pittsburgh, PA

8:33 a.m. – 8:44 a.m.

Paper 39 - NEW MEASURES FOR PREDICTING OBSTETRIC OUTCOME AND BIRTH RELATED PELVIC FLOOR TRAUMA ANTENATALLY

G. Rostaminia¹, J. Peck³, K. W. Van Delft², R. Thakar², A. Sultan², S. Shobeiri³. ¹Ob&Gyn, Inova Fairfax Hospital, McLean, VA; ²Croydon Health University, London, United Kingdom; ³The University of Oklahoma Health Sciences Center, Oklahoma City, OK

8:44 a.m. – 8:55 a.m.

Paper 40 - CROWDSOURCING: A VALID ALTERNATIVE TO EXPERT EVALUATION OF ROBOTIC SURGERY SKILLS

M. Polin¹, N. Y. Siddiqui¹, C. Brown², H. Hesham², B. Comstock³, T. S. Lendvay³, M. Martino². ¹Duke University, Durham, NC; ²Lehigh Valley Health Network, Allentown, PA; ³University of Washington, Seattle, WA

8:55 a.m. – 9:06 a.m.

Paper 41 - PRE-OPERATIVE URINARY MICROBIOME REVEALS POST-OPERATIVE URINARY TRACT INFECTION RISK

K. J. Thomas-White¹, C. Fok², E. R. Mueller³, A. J. Wolfe¹, L. Brubaker³. ¹Microbiology and Immunology, Loyola University Chicago, Chicago, IL; ²Department of Urology, University of Minnesota, Minneapolis, MN; ³Obstetrics & Gynecology and Urology, Loyola University Chicago, Stritch School of Medicine, Chicago, IL

9:06 a.m. – 9:17 a.m.

Paper 42 - A STAGED FEASIBILITY STUDY OF A NOVEL VAGINAL BOWEL CONTROL SYSTEM FOR THE TREATMENT OF FECAL INCONTINENCE IN ADULT WOMEN

M. M. Takase-Sanchez, Research, Pelvalon, Inc., Sunnyvale, CA

9:17 a.m. – 9:30 a.m.

Video 4 - DORSAL BUCCAL MUCOSAL GRAFT URETHROPLASTY IN FEMALE URETHRAL STRICTURE

B. Hameed, A. Chawla, S. Faizi. Urology, Kasturba Medical College, Manipal, Manipal University, Dakshina Kannada, India

9:30 a.m. – 10:15 a.m.

J. Marion Sims Lecture: William Parker, MD

Everything You Learned in Your Residency will Turn Out to be Wrong

Hall 4A

10:15 a.m. – 10:45 a.m.

Break in the Exhibit Hall

Hall 4B

10:45 a.m. – 11:45 a.m.

Scientific Concurrent Session 4 - Clinical

Ballroom 6B

Moderators: Neeraj Kohli, MD; Tristi Muir, MD

10:45 a.m. – 10:56 a.m.

Paper 43 - IS THE PELVIC FLOOR ANATOMY DISTORTED DURING PELVIC FLOOR ENDOVAGINAL ULTRASOUND?

G. Rostaminia¹, S. Shobeiri³, S. D. Abramowitz². ¹Ob&Gyn, Inova Fairfax Hospital, McLean, VA; ²The University of Pittsburgh, Pittsburgh, PA; ³The University of Oklahoma Health Sciences Center, Oklahoma City, OK

10:56 a.m. – 11:07 a.m.

Paper 44 - THE IMPACT OF OBESITY ON INTRAOPERATIVE COMPLICATIONS AND PROLAPSE RECURRENCE FOLLOWING MINIMALLY INVASIVE SACROCOLPOPEXY

L. Turner¹, E. S. Lavelle¹, J. L. Lowder², J. P. Shepherd¹. ¹UPMC, Pittsburgh, PA; ²Washington University, St. Louis, MO

11:07 a.m. – 11:18 a.m.

Paper 45 - THE EFFECT OF BODY MASS INDEX ON PELVIC FLOOR SUPPORT ONE YEAR POSTPARTUM

M. K. Guess¹, Y. Chen², B. Johnson⁴, F. Li⁴, K. A. Connell³. ¹Obstetrics, Gynecology and Reproductive Sciences, Yale University School of Medicine, New Haven, CT; ²Obstetrics and Gynecology, The Third People's Hospital, Wenzhou Medical College, Wenzhou, Zhejiang, China; ³Obstetrics and Gynecology, University of Colorado, Aurora, CO; ⁴Yale Center for Analytical Sciences, Yale School of Public Health, New Haven, CT

11:18 a.m. – 11:29 a.m.

Paper 46 - ADHERENCE AND PERSISTENCE OF MIRABEGRON AND ANTICHOLINERGIC THERAPIES IN PATIENTS WITH OVERACTIVE BLADDER: A REAL WORLD CLAIMS DATA ANALYSIS

D. Sussman¹, A. Yehoshua², J. Kowalski², W. Lee³, J. Kish³, B. P. Murray⁴. ¹Department of Surgery, Division of Urology, Rowan University School of Osteo Medicine, Stratford, NJ; ²Allergan, Inc., Irvine, CA; ³Xcenda, San Bruno, CA; ⁴Capital Region Urology, Albany, NY

11:29 a.m. – 11:42 a.m.

Video 5 - MANAGEMENT OF DELAYED IATROGENIC URETERAL INJURIES

M. Mueller, K. Kenton. OB/GYN, Northwestern University, Chicago, IL

10:45 a.m. – 11:45 a.m.

Scientific Concurrent Session 5 – Oral Posters, Surgical

Ballroom 6A

Moderators: Denise Elser, MD; Adam Holzberg, DO

10:45 a.m. – 10:58 a.m.

Video 6 - A NOVEL APPROACH TO SACRAL FIXATION DURING LAPAROSCOPIC SUPRACERVICAL HYSTERECTOMY AND SACROCERVICOPEXY FOR UTEROVAGINAL PROLAPSE

E. Von Bargaen, P. Rosenblatt, H. Warda. Female Pelvic Medicine and Reconstructive Surgery, Mount Auburn Hospital, Cambridge, MA

10:58 a.m. – 11:02 a.m.

Oral Poster 1 - OPTIMIZING SACRAL FIXATION OF MESH; EXPANDED COMPARISON OF SURGICAL TECHNIQUES

A. Akl¹, M. Muriuki², L. I. Voronov², R. M. Havey², A. Patwardhan², L. Brubaker¹, C. Brincat¹, C. M. Fitzgerald¹, E. R. Mueller¹. ¹Loyola University Stritch School of Medicine, Oak Park, IL; ²Orthopedic Biomechanics Lab, Edward Hines Jr. VA Hospital, Hines, IL

11:02 a.m. – 11:06 a.m.

Oral Poster 2 - LONG-TERM RESULTS OF ROBOTIC- ASSISTED LAPAROSCOPIC SACROCOLPOPEXY USING LIGHTWEIGHT Y MESH

N. C. Mushonga, C. Salamon, C. Lewis, J. Pagnillo, S. St Louis, P. Culligan. OB/GYN, Atlantic Health System, Morristown, NJ

11:06 a.m. – 11:10 a.m.

Oral Poster 3 - OUTCOMES AFTER SURGICAL MANAGEMENT OF STAGE IV COMPARED TO STAGE II APICAL PELVIC ORGAN PROLAPSE: A COHORT STUDY WITH A FOLLOW UP SURVEY

S. A. El-Nashar¹, A. A. Mukwege¹, D. J. Rhodes². ¹Obstetrics and Gynecology, Mayo Clinic, Rochester, MN; ²Division of Preventive, Occupational, and Aerospace Medicine, Mayo Clinic, Rochester, MN

11:10 a.m. – 11:14 a.m.

Questions for Oral Posters 1 – 3

11:14 a.m. – 11:18 a.m.

Oral Poster 4 - PREVALENCE OF OCCULT PATHOLOGY WITHIN MORCELLATED UTERI REMOVED DURING CONCOMITANT ROBOTIC SACROCOLPOPEXY

V. Vallabh-Patel¹, C. M. Saiz¹, A. Francis², J. Pagnillo¹, C. Salamon¹, P. Culligan¹. ¹Female Pelvic Medicine and Reproductive Surgery, Atlantic Health Systems, Morristown, NJ; ²Obstetrics and Gynecology, Atlantic Health Systems, Morristown, NJ

11:18 a.m. – 11:22 a.m.

Oral Poster 5 - THE ROLE OF OBESITY IN SUCCESS AND COMPLICATIONS IN PATIENTS UNDERGOING RETROPUBIC TENSION-FREE VAGINAL TAPE SURGERY FOR STRESS URINARY INCONTINENCE

A. Berger¹, T. Zhan², J. M. Montella¹. ¹Department of Obstetrics and Gynecology, Thomas Jefferson University Hospital, Philadelphia, PA; ²Department of Biostatistics, Thomas Jefferson University Hospital, Philadelphia, PA

11:22 a.m. – 11:26 a.m.

Oral Poster 6 - RISK FACTORS FOR VAGINAL CUFF DEHISCENCE AFTER HYSTERECTOMY: A RETROSPECTIVE CASE-CONTROL STUDY OF THE FPRN

E. Von Bargaen⁶, A. Lake¹, A. K. Pahwa⁵, A. J. Hill⁴, N. E. Deveneau⁷, J. Patel³, R. Gala², T. C. Chai⁸. ¹Ob/gyn, Yale New Haven Hospital, New Haven, CT; ²Obstetrics and Gynecology, Ochsner Health System, New Orleans, LA; ³Yale School of Medicine, New Haven, CT; ⁴Cleveland Clinic, Cleveland, OH; ⁵Urogynecology, University of Pennsylvania, Philadelphia, PA; ⁶Obstetrics and

SCIENTIFIC PROGRAM

Friday, October 16 (Continued)

Gynecology, Mount Auburn Hospital/
Beth Israel Deaconess Medical Center,
Cambridge, MA; ⁷OB/GYN, University
of Louisville, Louisville, KY; ⁸Urology,
Yale New Haven Hospital, New Haven,
CT

11:26 a.m. – 11:30 a.m.

Questions for Oral Posters 4 – 6

11:30 a.m. – 11:34 a.m.

Oral Poster 7 - CLINICAL OUTCOMES AFTER OPERATIVE MANAGEMENT OF COMPLICATIONS RESULTING FROM TRANSVAGINAL MESH FOR PELVIC ORGAN PROLAPSE

J. J. Yune¹, S. Siddighi¹, A. Staack²,
H. T. Danh¹, J. S. Hardesty¹. ¹FPMRS,
Loma Linda University, Loma Linda,
CA; ²Urology, Loma Linda University,
Loma Linda, CA

11:34 a.m. – 11:38 a.m.

Oral Poster 8 - ASSESSING URETERAL PATENCY USING D10 CYSTOSCOPY FLUID: EVALUATION OF URINARY TRACT INFECTION RATES

L. N. Siff, C. Unger, J. E. Jelovsek, M.
Paraiso, B. Ridgeway, M. D. Barber.
Urogynecology, Cleveland Clinic
Foundation, Cleveland, OH

11:38 a.m. – 11:42 a.m.

Oral Poster 9 - PERIOPERATIVE ADVERSE EVENTS FOLLOWING COLPOCLEISIS FOR TREATMENT OF UTEROVAGINAL AND POST- HYSTERECTOMY VAGINAL VAULT PROLAPSE

A. J. Hill, M. D. Walters, C. Unger.
Urogynecology and Reconstructive
Pelvic Surgery, Cleveland Clinic,
Cleveland, OH

11:42 a.m. – 11:46 a.m.

Questions for Oral Posters 7-9

10:45 a.m. – 11:45 p.m.

Scientific Concurrent Session 6 – Oral Posters, Clinical

Ballroom 6C

Moderators: Anthony Visco, MD; Megan
Schimpf, MD

10:45 a.m. – 10:58 a.m.

Video 7 - TRANSVAGINAL APPROACH TO URETHRAL RECONSTRUCTION AFTER MIDURETHRAL SLING COMPLICATION

T. Nimeh¹, E. Costantini²,
W. Halgrimson¹, M. Di Biase², E.
Kocjancic¹. ¹Urology, University
of Illinois at Chicago, Chicago, IL;
²University of Perugia, Perugia, Italy

10:58 a.m. – 11:02 a.m.

Oral Poster 10 - A NOVEL APPROACH TO MAP QUANTIFIED FASCICLE DATA ONTO A 3D MODEL OF PELVIC FLOOR MUSCLES

M. Alperin¹, D. Easley², P. G.
Menon³, M. S. Cook⁴, W. Barone⁵,
S. D. Abramowitch². ¹Reproductive
Medicine, Division of FPMRS,
University of California, San Diego,
La Jolla, CA; ²Musculoskeletal
Research Center, University of
Pittsburgh, Pittsburgh, PA; ³Electrical
and Computer Engineering, Carnegie
Mellon University, Pittsburgh, PA;
⁴Integrative Biology and Physiology,
University of Minnesota, Minneapolis,
MN; ⁵Bioengineering, University of
Pittsburgh, Pittsburgh, PA

11:02 a.m. – 11:06 a.m.

Oral Poster 11 - 3T PELVIC MRI PRE/ POST PREGNANCY AND DELIVERY IN NULLIPAROUS WOMEN PRESENTING FOR INFERTILITY EVALUATION

H. E. Richter¹, M. E. Lockhart²,
G. W. Bates¹, T. M. Beasley³, D. E.
Morgan². ¹Obstetrics and Gynecology,
University of Alabama at Birmingham,
Birmingham, AL; ²Radiology,
University of Alabama at Birmingham,

Birmingham, AL; ³Biostatistics,
University of Alabama at Birmingham,
Birmingham, AL

11:06 a.m. – 11:10 a.m.

Oral Poster 12 - CHANGES IN THE PERINEAL BODY DURING AND AFTER LABOR ARE RELATED TO POSTPARTUM PELVIC ORGAN PROLAPSE MEASUREMENTS

K. V. Meriwether¹, R. G. Rogers¹,
G. C. Dunivan¹, J. Alldredge¹, L.
Leeman¹, L. Migliaccio¹, C. Qualls².
¹Obstetrics & Gynecology, University
of New Mexico, Albuquerque, NM;
²Biostatistics, University of New
Mexico, Albuquerque, NM

11:10 a.m. – 11:14 a.m.

Questions for Oral Posters 10 – 12

11:14 a.m. – 11:18 a.m.

**Oral Poster 13 - INTRAVESICAL
TREATMENT WITH MEFLOQUINE, A
PANNEXIN 1 CHANNEL BLOCKER,
IMPROVES BLADDER FUNCTION IN
MICE WITH CYCLOPHOSPHAMIDE-
INDUCED HEMORRHAGIC CYSTITIS**
N. Cui¹, S. O. Suadican². ¹OB/GYN,
Montefiore Medical Center/ Albert
Einstein College of Medicine, Bronx,
NY; ²Urology, Albert Einstein College of
Medicine, Bronx, NY

11:18 a.m. – 11:22 a.m.

Oral Poster 14 - POTENTIAL MECHANISMS FOR MESH-RELATED COMPLICATIONS: EXPOSURE VS PAIN

A. L. Nolfi¹, B. N. Brown¹, C. A.
Mayr², L. Turner², S. Palcsey³, M.
Bonidie², S. D. Abramowitch⁴, P.
Moalli². ¹Bioengineering, University of
Pittsburgh, Pittsburgh, PA; ²Obstetrics,
Gynecology, and Reproductive
Sciences, Magee-Womens Hospital,
Pittsburgh, PA; ³Magee-Womens
Research Institute, Pittsburgh, PA;
⁴Bioengineering; Musculoskeletal
Research Center, University of
Pittsburgh, Pittsburgh, PA

11:22 a.m. – 11:26 a.m.

Oral Poster 15 - EFFECT OF ESTRADIOL AND PROGESTERONE ON TOLL-LIKE RECEPTOR 5 IN CULTURED HUMAN BLADDER EPITHELIAL CELLS

C. E. Foust-Wright, M. M. Weinstein, S. J. Pulliam, R. P. Batalden, M. Wakamatsu, T. K. Berk, M. Phillippe. Obstetrics and Gynecology, Massachusetts General Hospital, Boston, MA

11:26 a.m. – 11:30 a.m.

Questions for Oral Posters 13 – 15

11:30 a.m. – 11:34 a.m.

Oral Poster 16 - IMPACT OF VAGINAL DELIVERY ON STRUCTURE AND FUNCTION OF PELVIC FLOOR MUSCLES

M. Alperin¹, M. S. Cook², L. Tuttle³, D. M. Lawley¹, R. L. Lieber⁴. ¹Reproductive Medicine, Division of FPMRS, University of California, San Diego, La Jolla, CA; ²Integrative Biology and Physiology, University of Minnesota, Minneapolis, MN; ³Physical Therapy, San Diego State University, San Diego, CA; ⁴Rehabilitation Institute of Chicago, Chicago, IL

11:34 a.m. – 11:38 a.m.

Oral Poster 17 - NOVEL USE OF CARDIAC ELECTROPHYSIOLOGY CATHETER TO MAP AND PACE BLADDER ELECTRICAL ACTIVITY

R. S. Kelley¹, M. Vardy², G. Simons³, C. Ascher-Walsh¹, M. Brodman¹. ¹Obstetrics and Gynecology, Icahn School of Medicine at Mount Sinai, New York, NY; ²Obstetrics and Gynecology, Englewood Hospital, Englewood, NJ; ³Cardiology, Englewood Hospital, Englewood, NJ

11:38 a.m. – 11:42 a.m.

Oral Poster 18 - HOW DOES A COMPLIANT AIR-FILLED INTRAVESICAL BALLOON INCREASE

THE ABDOMINAL PRESSURE REQUIRED TO INDUCE STRESS URINARY INCONTINENCE (SUI) RELATED LEAKAGE?

C. R. Rardin², K. McCammon³, J. Zuckerman³, S. Duncan¹, K. Connors¹. ¹Solace Therapeutics, Framingham, MA; ²Woman and Infants Hospital, Providence, RI; ³Urology of Virginia, Virginia Beach, VA

11:42 a.m. – 11:46 a.m.

Questions for Oral Posters 16 – 18

12:00 p.m. – 1:00 p.m.

Scientific Concurrent Session 7 – Basic Science

Ballroom 6B

Moderators: Keith Downing, MD; Clifford Wai, MD

12:00 p.m. – 12:15 p.m. [Papers 47 and 48 are Combined]

Paper 47 - DIFFERENTIAL EFFECTS OF VAGINAL ESTROGENS AND OSPEMIFENE ON THE VAGINAL WALL

P. A. Maldonado, I. Montoya, J. F. Acevedo, P. Keller, R. A. Word. OB/GYN, UT Southwestern Medical Center, Dallas, TX

Paper 48 - EFFECTS OF OSPEMIFENE AND VAGINAL ESTROGEN ON THE RAT LOWER URINARY TRACT

P. A. Maldonado, I. Montoya, J. F. Acevedo, P. Keller, R. A. Word. OB/GYN, UT Southwestern Medical Center, Dallas, TX

12:15 p.m. – 12:28 p.m.

Video 8 - BEEF TONGUE MODEL - A PRACTICAL ALTERNATIVE FOR TEACHING THE REPAIR OF OBSTETRIC ANAL SPHINCTER LACERATION

M. H. Vaughan, S. Larkin, E. Trowbridge. Obstetrics and Gynecology, University of Virginia Health System, Charlottesville, VA

12:28 p.m. – 12:43 p.m.

[Papers 49 and 50 are Combined]

Paper 49 - IN VIVO INTEGRATION AND MECHANISM OF ACTION OF SMOOTH MUSCLE PRECURSOR CELLS DERIVED FROM HUMAN EMBRYONIC STEM CELLS

B. Chen¹, Y. Wen¹, Y. Wei¹, Z. Wang¹, M. Green¹, P. Wani¹, G. Swaminathan², A. Ramamurthi², R. A. Reijo Pera¹. ¹OBGYN, Stanford University School of Medicine, Palo Alto, CA; ²Biomedical Engineering, Cleveland Clinic Lerner College of Medicine, Case Western University, Cleveland, OH

Paper 50 - EFFICACY OF HUMAN SMOOTH MUSCLE PRECURSOR CELLS DERIVED FROM HUMAN EMBRYONIC STEM CELLS FOR TREATMENT OF STRESS URINARY INCONTINENCE

B. Chen, Z. Wang, Y. Wen, Y. Wei, P. Wani, M. Green, R. A. Reijo Pera. OBGYN, Stanford University School of Medicine, Palo Alto, CA

12:43 a.m. – 12:56 p.m.

Video 9 - ANATOMY OF THE FEMALE SEXUAL RESPONSE

K. R. Smithling¹, R. S. Rubin³, J. Boileau², C. B. Iglesia¹. ¹Obstetrics and Gynecology, Division of Female Pelvic Medicine and Reconstruction Surgery, MedStar Washington Hospital Center, Washington, DC; ²Georgetown University School of Medicine, Washington, DC; ³Department of Urology, Georgetown University Hospital, Washington, DC

12:00 p.m. – 1:00 p.m.

Scientific Concurrent Session 8 – Oral Posters, LUTS/Sexual Health

Ballroom 6A

Moderators: Dennis Miller, MD; Catherine Bradley, MD, MSCE

SCIENTIFIC PROGRAM

Friday, October 16 (Continued)

12:00 p.m. – 12:13 p.m.

Video 10 - X-FLAP REPAIR OF ACQUIRED CHRONIC CLOACA

C. Jones², H. Barbier¹, D. Gruber¹.

¹FPMRS, WRNMMC, Rockville, MD;

²FPMRS, WRNMMC, Bethesda, MD

12:13 p.m. – 12:17 p.m.

Oral Poster 19 - BREAKDOWN OF PERINEAL LACERATION REPAIR FOLLOWING VAGINAL DELIVERY.

K. Jallad, S. E. Steele, M. D. Barber.

Urogynecology, Cleveland Clinic Foundation, Cleveland, OH

12:17 p.m. – 12:21 p.m.

Oral Poster 20 - RISK FACTORS FOR A PREDICTION MODEL OF OVERACTIVE BLADDER AFTER SACROCOLPOPEXY

C. M. Chu, H. S. Harvie, L. A. Arya, U. U. Andy. Urogynecology, Hospital of the University of Pennsylvania, Philadelphia, PA

12:21 p.m. – 12:25 p.m.

Oral Poster 21 - WOMEN GET IT RIGHT: THE MY PELVIC ORGAN PROLAPSE PERCEPTION (MYPOPP) STUDY

T. Dune¹, P. Raj¹, R. H. Blackwell², E.O. Gunnar¹, C. M. Fitzgerald¹, C. Brincat¹, E. R. Mueller¹, L. Brubaker¹. ¹Female Pelvic Medicine and Reconstructive Surgery, Loyola University Chicago Stritch School of Medicine, Maywood, IL; ²Department of Urology, Loyola University Chicago Stritch School of Medicine, Maywood, IL

12:25 p.m. – 12:29 p.m.

Questions for Oral Posters 19 – 21

12:29 p.m. – 12:33 p.m.

Oral Poster 22 - ELECTRICAL STIMULATION OF AFFERENT NERVES IN THE FOOT WITH TRANSCUTANEOUS ADHESIVE PAD ELECTRODES IMPROVES

OVERACTIVE BLADDER SYMPTOMS

C. Chermansky², J. P. Shepherd¹,

B. Shen², W. C. de Groat³, C. Tai².

¹Obstetrics and Gynecology, UPMC,

Pittsburgh, PA; ²Urology, UPMC,

Pittsburgh, PA; ³Pharmacology and

Chemical Biology, University of

Pittsburgh, Pittsburgh, PA

12:33 p.m. – 12:37 p.m.

Oral Poster 23 - THE EFFECTS OF THE EROSCILLATOR® GENITAL VIBRATORY STIMULATION DEVICE ON FEMALE SEXUAL DYSFUNCTION

M. K. Guess¹, K. A. Connell², O.

Adekoya⁴, S. G. Chudnoff³, K. E.

Nixon¹, C. F. Richmond¹, A. Melman⁵.

¹Obstetrics, Gynecology and Reproductive Sciences, Yale University School of Medicine, New Haven, CT;

²Obstetrics and Gynecology, University

of Colorado, Aurora, CO; ³Obstetrics

and Gynecology and Women's Health, Montefiore Medical Center, Bronx, NY;

⁴none, New York, NY; ⁵Urology, Albert Einstein College of Medicine, Bronx, NY

12:37 p.m. – 12:41 p.m.

Oral Poster 24 - EVALUATING SACRAL NEUROMODULATION LEAD PLACEMENT CHARACTERISTICS WITH MOTOR RESPONSES IN A LARGE STUDY OF OVERACTIVE BLADDER

J. Mangel¹, J. Bennett², C. Comiter³, S. Zylstra⁴, E. T. Bird⁵, T. L. Griebing⁶, D. Culkin⁷, S. E. Sutherland⁸, K. L. Noblett⁹, A. S. Mitchell¹⁰, F. Kan¹⁰, S. Siegel¹¹.

¹MetroHealth Medical Center, Cleveland, OH; ²Female

Pelvic Medicine, Grand Rapids, MI;

³Stanford University, Stanford, CA;

⁴Milford Regional Medical Center,

Whitinsville, MA; ⁵Scott and White

Healthcare, Temple, TX; ⁶University of

Kansas, Kansas City, KS; ⁷University

of Oklahoma, Oklahoma City, OK;

⁸University of Washington, Seattle, WA;

⁹University of California, Riverside, CA;

¹⁰Clinical, Medtronic, Minneapolis, MN;

¹¹Metro Urology, Woodbury, MN

12:41 p.m. – 12:45 p.m.

Questions for Oral Posters 22 – 24

12:45 p.m. – 12:49 p.m.

Oral Poster 25 - VOIDING SYMPTOMS FOLLOWING MIDURETHRAL SLING REVISION

B. J. Barenberg, S. D. Pickett, A.

Weingartner, L. Quiroz, D. E. O'Leary.

FPMRS, University of Oklahoma HSC, Oklahoma City, OK

12:49 p.m. – 12:53 p.m.

Oral Poster 26 - WHAT DOES IT MEAN TO BE SEXUALLY ACTIVE?

K. Greene¹, A. M. Wyman², L. Scott², L. F. Gephart³, T. J. Kuehl³, R. Bassaly².

¹Gynecology and Obstetrics, Emory University, Atlanta, GA; ²University of South Florida, Tampa, FL; ³Baylor Scott & White, Temple, TX

12:53 p.m. – 12:57 p.m.

Oral Poster 27 - 24-HOUR VOIDING DIARIES VERSUS 3-DAY VOIDING DIARIES: A CLINICAL COMPARISON

C. Elmer¹, N. Book², J.O. Elliott³, A.

Murphy⁴. ¹Department of OB/GYN, OhioHealth Riverside Methodist

Hospital, Columbus, OH; ²OhioHealth Urogynecology Physicians, Columbus,

OH; ³Department of Medical

Education, OhioHealth, Columbus, OH;

⁴MaternOhio Specialists in Obstetrics & Gynecology, Dublin, OH

12:57 p.m. – 1:01 p.m.

Questions for Oral Posters 25 — 27

12:00 p.m. – 1:00 p.m.

Scientific Concurrent Session 9 – Oral Posters, Epidemiology/Quality of Life

Ballroom 6C

Moderators: David "Ike" Rahn, MD; Jeffrey Clemons, MD

12:00 p.m. – 12:13 p.m.

Video 11 - SACRAL HYSTEROPEXY SLING: A VIDEO DEMONSTRATION AND PRELIMINARY RESULTS OF AN APPROACH TO UTERINE

**CONSERVING SURGERY FOR
ADVANCED PROLAPSE**

F. G. Gould, S. Al-Salihi, M. P. Carey,
A. Parambi, G. Privato, G. Carey.
Urogynaecology, Royal Women's
Hospital, Prahran, VIC, Australia

12:13 p.m. – 12:17 p.m.

**Oral Poster 28 - KNOWLEDGE,
PERCEPTIONS AND ATTITUDES
TOWARDS PELVIC ORGAN
PROLAPSE AND URINARY
INCONTINENCE IN SPANISH-
SPEAKING LATINAS ON THE US/
MEXICO BORDER**

E. Jackson, L. Hernandez, V. T. Mallett,
I. Montoya. Obstetrics and Gynecology,
Texas Tech University HSC El Paso, El
Paso, TX

12:17 p.m. – 12:21 p.m.

**Oral Poster 29 - BURDEN OF LOWER
URINARY TRACT SYMPTOMS AMONG
POSTMENOPAUSAL WOMEN IN AN
INTEGRATED HEALTHCARE SYSTEM**

A. Clark¹, A. B. Stoneburner⁴, J. E.
Bulkley⁴, M. Leo⁴, K. Beadle³, W. T.
Gregory⁵, K. Vesco². ¹Urogynecology,
Kaiser Permanente Northwest,
Portland, OR; ²Department of
Obstetrics and Gynecology/The
Center for Health Research, Kaiser
Permanente Northwest, Portland,
OR; ³Department of Obstetrics and
Gynecology, Kaiser Permanente
Northwest, Portland, OR; ⁴Center for
Health Research, Kaiser Permanente
Northwest, Portland, OR; ⁵Department
of Obstetrics and Gynecology/
Division of Urogynecology, Fellowship
Director, Female Pelvic Medicine and
Reconstructive Surgery Oregon Health
& Science University, Portland, OR

12:21 p.m. – 12:25 p.m.

**Oral Poster 30 - BARRIERS TO
CARE-SEEKING FOR ACCIDENTAL
BOWEL LEAKAGE**

H. W. Brown¹, M. Wise², R. G. Rogers³.
¹Ob/Gyn and Urology, University of

Wisconsin School of Medicine & Public
Health, Madison, WI; ²Sonderregger
Research Institute, School of
Pharmacy, University of Wisconsin -
Madison, Madison, WI; ³Obstetrics &
Gynecology, University of New Mexico,
Albuquerque, NM

12:25 p.m. – 12:29 p.m.

Questions for Oral Posters 28 – 30

12:29 p.m. – 12:33 p.m.

**Oral Poster 31 - RISK OF VENOUS
THROMBOEMBOLISM IN PATIENTS
UNDERGOING SURGERY FOR PELVIC
ORGAN PROLAPSE**

E. D. Hokenstad¹, E. B. Habermann²,
A. E. Wagie², J. A. Occhino¹. ¹Obstetrics
and Gynecology, Mayo Clinic,
Rochester, MN; ²Robert D. and Patricia
E. Kern Center for the Science of
Health Care Delivery, Mayo Clinic,
Rochester, MN

12:33 p.m. – 12:37 p.m.

**Oral Poster 32 - RISK OF A
SUBSEQUENT SURGERY AFTER AN
INITIAL STRESS INCONTINENCE
AND/OR PELVIC ORGAN PROLAPSE
PROCEDURE**

J. Wu, A. A. Dieter, V. Pate, M. Jonsson
Funk. UNC-Chapel Hill, Chapel Hill, NC

12:37 p.m. – 12:41 p.m.

**Oral Poster 33 - TRENDS IN UTERINE
PRESERVATION AND OTHER SURGICAL
MANAGEMENT OF UTEROVAGINAL
PROLAPSE IN THE UNITED STATES
BETWEEN 2002 AND 2012**

A. M. Madsen, C. A. Raker, V. W. Sung.
Urogynecology and Reconstructive
Pelvic Surgery, Brown University/
Women and Infants, Providence, RI

12:41 p.m. – 12:45 p.m.

Questions for Oral Posters 31-33

12:45 p.m. – 12:49 p.m.

**Oral Poster 34 - A RANDOMIZED-
CONTROLLED TRIAL OF PATIENT-
CONTROLLED VALVE CATHETER
VERSUS INDWELLING FOLEY
CATHETER FOR SHORT-TERM
BLADDER DRAINAGE**

P. Kandadai, O. F. Duenas, A. L.
Pilzek, M. Flynn, J. Saini, K. Leung, D.
Patterson. Obstetrics & Gynecology,
University of Massachusetts Medical
School, Worcester, MA

12:49 p.m. – 12:53 p.m.

**Oral Poster 35 - OPTIMIZING
PATIENT SATISFACTION WITH
SUPRAPUBIC BLADDER DRAINAGE
FOLLOWING RECONSTRUCTIVE
PELVIC SURGERY**

M. M. Takase-Sanchez¹, J. C.
Thompson², D. S. Hale¹, M. Heit¹.
¹Urogynecology, Indiana University,
Indianapolis, IN; ²Obstetrics and
Gynecology, Indiana University,
Indianapolis, IN

12:53 p.m. – 12:57 p.m.

**Oral Poster 36 - ANALYSIS OF
SURGICAL OUTCOMES AND
DETERMINANTS INSTIGATING
LAWSUITS - CORRELATION OF
LITIGATION AND INJURY IN MESH
PLACED VAGINALLY (THE CLAIMS
STUDY)**

D. Zoorob², M. Karram¹, M. Thomas³,
J. Sroga³, J. L. Whiteside¹. ¹The Christ
Hospital, Cincinnati, OH; ²Department
of Obstetrics and Gynecology /
Division of Female Pelvic Medicine
and Reconstructive Surgery, University
Of Kansas Medical Center, Kansas City,
KS; ³Department of Obstetrics and
Gynecology, University Of Cincinnati,
Cincinnati, OH

12:57 p.m. – 1:00 p.m.

Questions for Oral Posters 34-36

SCIENTIFIC PROGRAM

Friday, October 16 (Continued)

1:00 – 2:00 p.m.

**Industry Supported Education*

3½ Years Post–July 2011 FDA Public Health Notice on Vaginal Mesh: What to Do Now for Recurrent and Grades 3–4 POP

Supported by AMS

(Lunch is provided)

Room 608–609

1:00 p.m. – 2:30 p.m.

Lunch in the Exhibit Hall

Hall 4B

2:30 p.m. – 3:30 p.m.

General Scientific Session

Hall 4A

Moderators: Kimberly Kenton, MD, MS;
Charles Nager, MD

2:30 p.m. – 2:41 p.m.

Paper 51 – RESIDENT KNOWLEDGE, SURGICAL SKILL AND CONFIDENCE IN TRANSOBTURATOR VAGINAL TAPE (TOT) PLACEMENT: THE VALUE OF A CADAVER LAB

W. Chong², K. T. Downing², A. R. Leegant², E. H. Banks², D. Fridman², S. A. Downie¹. ¹Anatomy and Structural Biology and Physical Medicine and Rehabilitation, Albert Einstein College of Medicine, Bronx, NY; ²Obstetrics & Gynecology and Women's Health, Albert Einstein College of Medicine/Montefiore Medical Center, Bronx, NY

2:41 p.m. – 2:52 p.m.

Paper 52 – VAGINAL Q-TIP URETHRAL MOBILITY MEASUREMENT AS AN ALTERNATIVE TO TRANSURETHRAL Q-TIP TEST

I. Meyer, J. M. Szychowski, J. D. Illston, A. Parden, H. E. Richter. University of Alabama at Birmingham, Birmingham, AL

2:52 p.m. – 3:03 p.m.

Paper 53 – PATIENT PERCEPTION OF URINARY TRACT INFECTION IS ASSOCIATED WITH DECREASED

URINARY MICROBIAL DIVERSITY

T. K. Price¹, E. E. Hilt¹, T. Dune², E. R. Mueller², C. Brincat², L. Brubaker², A. J. Wolfe¹, P. C. Schreckenberger³. ¹Microbiology and Immunology, Loyola University Chicago Stritch School of Medicine, Maywood, IL; ²Female Pelvic Medicine and Reconstructive Surgery, Loyola University Chicago Stritch School of Medicine, Maywood, IL; ³Microbiology and Pathology, Loyola University Chicago Stritch School of Medicine, Maywood, IL

3:03 p.m. – 3:14 p.m.

Paper 54 – UNIVERSAL CYSTOSCOPY AT THE TIME OF BENIGN HYSTERECTOMY: EXAMINING THE EFFECTS OF AN INSTITUTIONAL POLICY

A. M. Chi, D. M. Morgan, D. Curran, D. E. Fenner, C. W. Swenson. Obstetrics and Gynecology, University of Michigan, Ann Arbor, MI

3:14 p.m. – 3:27 p.m.

Video 12 – APICAL SLING: AN APPROACH TO POST-HYSTERECTOMY PROLAPSE

A. Alas, L. Espallat-Rijo, H. Devakumar, E. A. Hurtado, G. Davila. Department of Gynecology, Division of Female Pelvic Medicine and Reconstructive Surgery, Cleveland Clinic Florida, Weston, FL

3:27 p.m. – 3:38 p.m.

Late-Breaking Abstracts

VAGINAL UPHOLD HYSTEROPEXY AND LAPAROSCOPIC SACRAL HYSTEROPEXY FOR TREATMENT OF UTEROVAGINAL PROLAPSE: A PARALLEL COHORT STUDY

R.E. Gutman¹, A.J. Park¹, C.B. Iglesia¹, A.I. Sokol¹, C.R. Rardin², E. Sokol³, C. Matthews⁴, R. Geoffrion⁵, M. Karram⁶, J.L. Blomquist⁷, M.D. Barber⁸. ¹MedStar Washington Hospital Center/Georgetown Univ, Washington, DC; ²Obstetrics and Gynecology, Alpert

Medical School of Brown University/ Women & Infants' Hospital of Rhode Island, Providence, RI; ³Obstetrics and Gynecology, Stanford University School of Medicine, Palo Alto, CA; ⁴Obstetrics and Gynecology, University of North Carolina, Chapel Hill, NC; ⁵University of British Columbia, Vancouver, British Columbia, Canada; ⁶The Christ Hospital/ University of Cincinnati, Cincinnati, OH; ⁷Greater Baltimore Medical Center, Towson, Maryland; ⁸Cleveland Clinic Foundation, Cleveland, OH

3:38 p.m. – 3:49 p.m.

Late-Breaking Abstracts

PREDICTING INDIVIDUAL RISK OF PELVIC FLOOR DISORDERS 12-20 YEARS AFTER DELIVERY FROM TWO PROSPECTIVE COHORT STUDIES

J.E. Jelovsek¹, M.D. Barber¹, K.M. Chagin², M.W. Kattan², M. Gyhagen³, I. Milsom³, D. Wilson⁴, S. Hagen⁵, A. Elders⁵, B. Areskoug⁶. ¹Obstetrics, Gynecology & Women's Health Institute, Cleveland Clinic, Cleveland, OH; ²Quantitative Health Sciences Institute, Cleveland Clinic, Cleveland, OH; ³Gynecology and Obstetrics, Sahlgrenska Academy at Gothenburg University, Gothenburg, Sweden; ⁴University of Otago, Dunedin, New Zealand; ⁵NMAHP Research Unit, Glasgow Caledonian University, Glasgow, Scotland, United Kingdom; ⁶Department of Mathematics, University of Gothenburg, Gothenburg, Sweden

3:50 p.m. – 4:20 p.m.

The New World of Physician Payment

Hall 4A

4:30 p.m. – 5:30 p.m.

Scientific Concurrent Session 10 – Basic Science

Ballroom 6B

Moderators: Pamela Moalli, MD, PhD;
Gina Northington, MD, PhD

4:30 p.m. – 4:41 p.m.

Paper 55 - SURFACE ORIENTATION IMPACTS MEASURED STIFFNESS OF SURGICAL MESH

D. D. Simon, T. Valdes, S. M. Andrews, B. Robinson, T. O. Woods. U.S. Food and Drug Administration, Silver Spring, MD

4:41 p.m. – 4:52 p.m.

Paper 56 - THE MICROBIOLOGY OF IRRITATIVE BLADDER SYMPTOMS: URINE MICROBIOTA, CYTOKINE PROFILES AND SYMPTOM SEVERITY AMONG WOMEN WITH INTERSTITIAL CYSTITIS/PAINFUL BLADDER SYNDROME

M. Abernethy¹, A. Rosenfeld², D. Klumpp¹, B. White³, M. G. Mueller¹, C. Lewicky-Gaupp¹, K. Kenton¹. ¹Northwestern Memorial Hospital Feinberg School of Medicine, Chicago, IL; ²Columbia University, New York, NY; ³University of Illinois at Urbana-Champaign, Champaign, IL

4:52 p.m. – 5:03 p.m.

Paper 57 - IMMUNOLOGIC CHARACTERIZATION OF THE LEVATOR ANI MUSCLE IN WOMEN WITH PELVIC ORGAN PROLAPSE

S. D. Pickett¹, J. Chastain², R. Gallucci², S. Shobeiri¹. ¹Obstetrics and Gynecology, Female Pelvic Medicine and Reconstructive Surgery, University of Oklahoma Health Sciences Center, Oklahoma City, OK; ²Department of Pharmacology, The University of Oklahoma Health Sciences Center, Oklahoma City, OK

5:03 p.m. – 5:14 p.m.

Paper 58 - COMPARISON OF THREE DIFFERENT METHODS FOR GENERATING A STRESS URINARY INCONTINENCE RAT MODEL

B. Chen¹, Z. Wang¹, F. Zhu¹, Y. Wen¹, Y. Wei¹, M. Chan¹, C. Chien². ¹OBGYN, Stanford University School of Medicine, Palo Alto, CA; ²Urology Department, Stanford University School of Medicine, Palo Alto, CA

5:14 p.m. – 5:27 p.m.

Video 13 - A LOW-COST DO-IT-YOURSELF TRAINING MODEL FOR DIAGNOSTIC CYSTOSCOPY

D. El-Khawand, Female Pelvic Medicine and Reconstructive Surgery, WellSpan Health, York, PA

4:30 p.m. – 5:30 p.m.

Scientific Concurrent Session 11– Oral Posters, Miscellaneous

Ballroom 6A

Moderators: Catherine Matthews, MD; Michael Fialkow, MD, MPH

4:30 p.m. – 4:43 p.m.

Video 14 - ANATOMIC LANDMARKS DURING ROBOTIC-ASSISTED LAPAROSCOPIC SACRAL COLPOPEXY
A. Shariati, Urogynecology, FRMIU, Coconut Creek, FL

4:43 p.m. – 4:47 p.m.

Oral Poster 37 - ELEVATE-PC PROLAPSE REPAIR SYSTEM: MID-TERM EXPERIENCE

K. Guerrero, Southern General Hospital, Glasgow Scotland, United Kingdom

4:47 p.m. – 4:51 p.m.

Oral Poster 38 - BASELINE SYMPTOM SEVERITY AND THERAPEUTIC SUCCESS IN A LARGE PROSPECTIVE TRIAL OF SACRAL NEUROMODULATION THERAPY FOR OVERACTIVE BLADDER PATIENTS

K. L. Noblett¹, J. Mangel², J. Bennett³, C. Comiter⁴, S. Zylstra⁵, E. T. Bird⁶, T. L. Griebing⁷, D. Culkin⁸, S. E. Sutherland⁹, J. Bevens¹⁰, F. Kan¹⁰, S. Siegel¹¹.

¹Department of OB/GYN, University of California, Riverside, Riverside, CA; ²MetroHealth Medical Center, Cleveland, OH; ³Female Pelvic Medicine, Grand Rapids, MI; ⁴Stanford University, Stanford, CA; ⁵Milford Regional Medical Center, Whitinsville, MA; ⁶Scott and White Healthcare, Temple, TX; ⁷University of Kansas, Kansas City, KS; ⁸University of Oklahoma Health Sciences Center, Oklahoma City, OK;

⁹University of Washington, Seattle, WA;

¹⁰Clinical, Medtronic, Minneapolis, MN;

¹¹Metro Urology, Woodbury, MN

4:51 p.m. – 4:55 p.m.

Oral Poster 39 - LONGER-TERM OUTCOMES OF COMBINED TOLTERODINE AND VAGINAL ESTRADIOL CREAM FOR OVERACTIVE BLADDER SYMPTOMS AFTER SINGLE-THERAPY TREATMENT

D. R. Ellington¹, J. M. Malek¹, J. M. Szychowski⁴, K. A. Gerten², K. L. Burgio³, H. E. Richter¹. ¹Division of Urogynecology and Pelvic Reconstructive Surgery, University of Alabama at Birmingham, Birmingham, AL; ²Urogynecology, Park Nicollet, Minneapolis, MN; ³Department of Medicine; Birmingham/Atlanta Geriatric Research, Education, and Clinic Center, Department of Veteran Affairs, University of Alabama at Birmingham, Birmingham, AL; ⁴Department of Biostatistics, University of Alabama at Birmingham, Birmingham, AL

4:55 p.m. – 4:59 p.m.

Questions for Oral Posters 37 – 39

4:59 p.m. – 5:01 p.m.

Oral Poster 40 - PELVIC FLOOR SYMPTOMS AND SPINAL CURVATURE IN WOMEN

I. Meyer¹, T. McArthur¹, Y. Tang¹, J. McKinney², S. L. Morgan¹, H. E. Richter¹. ¹University of Alabama at Birmingham, Birmingham, AL; ²Center for Pelvic and Women's Health, Marathon Physical Therapy and Sports Medicine, Norton, MA

SCIENTIFIC PROGRAM

Friday, October 16 (Continued)

5:01 p.m. – 5:05 p.m.

Oral Poster 41 - A LARGE RETROSPECTIVE SERIES OF PREGNANCY AND DELIVERY AFTER MIDURETHRAL SLING

E. Adams-Piper², K. Buono¹, P. Mallipeddi¹, P. A. Castillo³, E. L. Whitcomb⁴, N. Guadderrama². ¹Ob/Gyn, Kaiser Santa Clara, Santa Clara, CA; ²Ob/Gyn, Division of Urogynecology, University of California - Irvine, Orange, CA; ³Vital Health Institute, Los Gatos, CA; ⁴Ob/Gyn, Division of Urogynecology, Kaiser Permanente Orange County, Irvine, CA

5:05 p.m. – 5:09 p.m.

Oral Poster 42 - PERSISTENT URINARY SYMPTOMS ONE YEAR POSTPARTUM IN WOMEN SUSTAINING AN OBSTETRIC ANAL SPHINCTER INJURY

A. Leader-Cramer, K. Kenton, B. Dave, M. Mueller, L. Johnson, C. Lewicky-Gaupp. Female Pelvic Medicine and Reconstructive Surgery, Northwestern University, Chicago, IL

5:09 p.m. – 5:13 p.m.

Questions for Oral Posters 40-42

5:13 p.m. – 5:17 p.m.

Oral Poster 43 - PATIENT SATISFACTION WITH NURSE-LED TELEPHONE FOLLOW-UP IN AN AMBULATORY SETTING

M. O. Schimpf¹, M. B. Berger¹, J. A. Tucker¹, T. M. Smith², D. E. Fenner¹. ¹ObGyn, University of Michigan, Ann Arbor, MI; ²Virginia Women's Center, Richmond, VA

5:17 p.m. – 5:21 p.m.

Oral Poster 44 - A NEW ALGORITHM FOR POSTOPERATIVE VOID TRIALS

A. R. Meekins, N. Y. Siddiqui, A. A. Dieter. Obstetrics and Gynecology, Duke University Hospital, Durham, NC

5:21 p.m. – 5:25 p.m.

Oral Poster 45 - ULTRASOUND INDICATORS OF RECTAL SUPPORT DEFECT IN WOMEN WITH OBSTRUCTIVE DEFECATORY SYMPTOMS

G. Rostaminia, P. Javadian, S. Shobeiri. The University of Oklahoma Health Sciences Center, Oklahoma City, OK

5:25 p.m. – 5:29 p.m.

Questions for Oral Posters 43 – 45

4:30 p.m. – 5:30 p.m.

Scientific Concurrent Session 12 – Oral Posters, Miscellaneous

Ballroom 6C

Moderators: Andrew Cassidenti, MD; Robert Gutman, MD

4:30 p.m. – 4:43 p.m.

Video 15 - CYSTOCELE REPAIR USING AUTOLOGOUS ILIOTIBIAL BAND

S. A. Cohen, E. M. Mellano, Z. Chaudhry, A. Ackerman, P. Ramart, V. C. Scott, J. Kim, S. Raz. Pelvic Medicine and Reconstructive Surgery, UCLA, Los Angeles, CA

4:43 p.m. – 4:47 p.m.

Oral Poster 46 - UTILITY PREFERENCE SCORES FOR PELVIC ORGAN PROLAPSE

H. S. Harvie, U. U. Andy, S. J. Weissbart, L. A. Arya. University of Pennsylvania, Philadelphia, PA

4:47 p.m. – 4:51 p.m.

Oral Poster 47 - RESPONSIVENESS OF A COMPUTERIZED-ADAPTIVE TEST FOR URINARY INCONTINENCE SYMPTOMS

V. W. Sung¹, R. G. Rogers², J. Griffith³, M. A. Clark¹, C. A. Raker¹. ¹Obstetrics and Gynecology, Brown Medical School/Women and Infants Hospital, Providence, RI; ²University of New Mexico, Albuquerque, NM; ³Northwestern University, Chicago, IL

4:51 p.m. – 4:55 p.m.

Oral Poster 48 - LONG-TERM QUALITY OF LIFE AND SEXUAL FUNCTION AFTER VAGINAL SURGERY FOR APICAL PROLAPSE: ANALYSIS OF A RANDOMIZED TRIAL OF UTEROSACRAL AND SACROSPINOUS SUSPENSIONS

E. S. Lukacz¹, L. K. Warren², H. E. Richter³, L. Brubaker⁴, M. D. Barber⁵, P. Norton⁶, A. C. Weidner⁹, J. N. Nguyen⁷, M. Gantz², S. Meikle⁸. ¹Reproductive Medicine, UC San Diego Health System, La Jolla, CA; ²Statistical & Environmental Sciences, RTI International, Research Triangle Park, NC; ³Department of Obstetrics and Gynecology, University of Alabama at Birmingham, Birmingham, AL; ⁴Department of Obstetrics and Gynecology, Loyola University Chicago Stritch School of Medicine, Chicago, IL; ⁵Obstetrics, Gynecology and Women's Health Institute, Cleveland Clinic, Cleveland, OH; ⁶Department of Obstetrics and Gynecology, University of Utah Medical Center, Salt Lake City, UT; ⁷Department of Obstetrics and Gynecology, Southern California Kaiser Permanente, Downey, CA; ⁸Eunice Kennedy Shriver National Institute of Child Health and Human Development, Bethesda, MD; ⁹Department of Obstetrics and Gynecology, Duke Medical Center, Durham, NC

4:55 p.m. – 4:59 p.m.

Questions for Oral Posters 46 – 48

4:59 p.m. – 5:01 p.m.

Oral Poster 49 - UTILIZING TECHNOLOGY IN ASSESSMENT OF LOWER URINARY TRACT SYMPTOMS: A RANDOMIZED TRIAL OF ELECTRONIC VERSUS PAPER VOIDING DIARIES

R. Sussman¹, L. A. Richter², S. J. Tarplin³, E. Tefera², A. J. Park², A. I. Sokol², R. E. Gutman², C. B. Iglesia². ¹Urology, Georgetown University

Hospital, Washington, DC; ²Medstar Washington Hospital Center, Washington, DC; ³Cleveland Clinic, Cleveland, OH

5:01 p.m. – 5:05 p.m.

Oral Poster 50 - PATIENT COMPLIANCE TO PELVIC FLOOR PHYSICAL THERAPY FOR URINARY INCONTINENCE

F. Farahani, E. Calloway, R. Gibson, K.A. Conrad, W. YingXing, L. Johnson, J. Gleason. Carilion Clinic, Virginia Tech Carilion School of Medicine, Roanoke, VA

5:05 p.m. – 5:09 p.m.

Oral Poster 51 - WARM-UP BEFORE ROBOTIC HYSTERECTOMY DOES NOT IMPROVE TRAINEE OPERATIVE PERFORMANCE: A RANDOMIZED TRIAL

C. Chen¹, E. Tanner¹, A. O. Malpani², S. Vedula², A. N. Fader¹, S. A. Scheib¹, I. C. Green¹, G. D. Hager². ¹GYNOB, Johns Hopkins, Baltimore, MD; ²Computer Science, Johns Hopkins University, Baltimore, MD

5:09 p.m. – 5:13 p.m.

Questions for Oral Posters 49 – 51

5:13 p.m. – 5:17 p.m.

Oral Poster 52 - RECTOCELES: IS THERE A CORRELATION BETWEEN CLINICAL EXAM AND RADIOGRAPHIC FINDINGS IN SYMPTOMATIC WOMEN? A RETROSPECTIVE STUDY.

A. M. Johnson¹, S. J. Pulliam¹, C. E. Foust-Wright¹, L. Bordeianou², L. Savitt², M. M. Weinstein¹. ¹Department of Vincent Obstetrics, Gynecology and Reproductive Biology, Division of Female Pelvic Medicine and Reconstructive Surgery, Massachusetts General Hospital, Harvard Medical School, Boston, MA; ²Division of General and Gastrointestinal Surgery, Colorectal Surgery Program, Massachusetts General Hospital, Harvard Medical School, Boston, MA

5:17 p.m. – 5:21 p.m.

Oral Poster 53 - RISK FACTORS FOR MICROSCOPIC HEMATURIA IN WOMEN

L. A. Richter⁷, K. Jallad², Q. K. Lippmann³, J. Lucas⁴, E. M. Mellano⁵, S. J. Weissbart⁶, J. Kim⁵, R. E. Gutman¹. ¹Female Pelvic Medicine & Reconstructive Surgery, MedStar Washington Hospital Center, Washington, DC; ²Cleveland Clinic, Cleveland, OH; ³UCSD, San Diego, CA; ⁴Virginia Mason, Seattle, WA; ⁵UCLA, Los Angeles, CA; ⁶UPENN, Philadelphia, PA; ⁷MedStar Washington Hospital Center, Washington, DC

5:21 p.m. – 5:25 p.m.

Oral Poster 54 - A REVIEW OF GRAFT-VERSUS-HOST DISEASE ASSOCIATED VULVOVAGINAL SYMPTOMS IN PATIENTS WHO HAVE UNDERGONE BONE MARROW TRANSPLANT

C. P. Chung¹, R. E. Sargent¹, N. T. Chung², J. V. Lacey², M. T. Wakabayashi¹. ¹Gyn Oncology, City of Hope Medical Center, Duarte, CA; ²Department of Population Sciences, City of Hope Medical Center, Duarte, CA

5:25 p.m. – 5:29 p.m.

Questions for Oral Posters 52 – 54

5:30 p.m. – 6:30 p.m.

Global Heath SIG Business Meeting

Room 616

5:30 p.m. – 6:30 p.m.

Private Practice SIG Business Meeting

Room 619

7:00 p.m. – 11:00 p.m.

AUGSome Rockaraoke

EMP Museum

Saturday, October 17

9:00 a.m. – 12:00 p.m.

Live Cadaver Dissection and Telesurgery

Hall 4A

Patrick Culligan, MD., John DeLancey, MD, Shlomo Raz, MD, Marlene Corton, MD

See more details on page 25.

***Industry supported education sessions are organized by industry and are not an official part of the AUGS PFD Week Program.**

ePosters Featuring the Latest Research in FPMRS

Be sure to check out our ePoster viewing stations in the registration area to find the latest research in FPMRS! The ePosters are available for viewing and download through the PFD week mobile app and will be searchable after the conference for extended viewing.

MEET THE EXPERTS EDUCATIONAL ROUNDTABLES

Roundtable discussions provide an informal, small-group setting for clinicians to present cases and discuss solutions with respected authorities in the field. Roundtables have limited availability; pre-registration is required.

THURSDAY, OCTOBER 15

6:45 a.m. – 7:45 a.m., Room 606

STEM CELL AND TISSUE ENGINEERING APPLICATIONS IN FPMRS

Jeffrey L. Cornella, MD

MINIMALLY INVASIVE OBLITERATIVE AND RECONSTRUCTIVE PROCEDURES FOR PROLAPSE – COLPOCLEISIS AND ROBOTIC SACROCOLPOPEXY – WHEN, WHY, AND HOW?

Neena Agarwala, MD

EVOLUTION OF VESICOVAGINAL FISTULA

Ralph Chesson Jr., MD

ENDOSCOPIC MIDURETHRAL, CIRCUMFERENTIAL INJECTION OF CALCIUM HYDROXYLAPATITE FOR URETHRAL BULKING

Robert F. Flora, MD, MBA, MPH

NATURAL ORIFICE SACROCOLPOPEXY

Charles R. Hanes, II, MD, FACOG

WHY VAGINAL HYSTERECTOMY SHOULD BE YOUR GO-TO PROCEDURE

Michael Karram, MD, FACOG

HOW TO INCORPORATE PELVIC FLOOR ULTRASONOGRAPHY INTO YOUR PRACTICE

S. Abbas Shobeiri, MD

ESSENTIAL GYNECOLOGY FOR THE FEMALE PELVIC MEDICINE SPECIALIST

Christopher Tarnay, MD

BOWEL DYSFUNCTION – CONSIDERATION OF THE HYPER AND HYPOSENSITIVE PATIENT

Susan C. Clinton, PT, DScPT, OCS, WCS, COMT, FAAOMPT

ESTABLISHING A POST-PARTUM PELVIC FLOOR CLINIC

Cynthia A. Brincat, MD, PhD; Colleen M. Fitzgerald, MD, MS

EPIC EMR FOR THE UROGYNECOLOGIST...MAKING IT WORK FOR YOU

Roger Goldberg, MD, MPH; Adam S. Holzberg, DO, FACOG

INTERSTITIAL CYSTITIS – EFFICIENT & EFFECTIVE TREATMENT IN A BUSY OFFICE PRACTICE

Bruce Kahn, MD, FACOG

CREDENTIALING FOR ADVANCED SURGICAL PROCEDURES

Charles R. Rardin, MD

MINDFULNESS FOR URINARY URGE INCONTINENCE

Jan Baker, MS, APRN

HOW TO BE A SUCCESSFUL APPLICANT FOR FPMRS FELLOWSHIP

Tyler Muffly, MD

CRITICAL COMPONENTS TO DEVELOPING A RESEARCH CAREER IN UROGYNECOLOGY

Vivian W. Sung, MD, MPH; Jennifer Wu, MD, MPH

TEACHING AND TRAINING IN ROBOTIC SURGERY

Nazema Y. Siddiqui, MD, MHSc

FRIDAY, OCTOBER 16

6:45 a.m. – 7:45 a.m., Room 606

INCORPORATING GLOBAL HEALTH INTO YOUR FPMRS CAREER

Joan Blomquist, MD; Chi Chiung Grace Chen, MD

WHICH WAY DO I GO? CHOOSING SURGICAL ROUTES AND TOOLS FOR PELVIC FLOOR SURGERY AS A PRACTICING SURGEON AND ACADEMIC MENTOR

Marie Fidela Paraiso, MD

ETIOLOGY, PREVENTION, EVALUATION, AND MANAGEMENT OF THE NONFUNCTIONAL BLADDER NECK AND URETHRA

Jane L. Miller, MD

TRANSVAGINAL MESH: THE GOOD, THE BAD, AND YOU

Jorge Peacher, MD

SLING REVISION: WHEN, WHY, AND HOW

Mary Grey Maher, MD

NATIVE TISSUE REPAIRS FOR POP SURGERY- LET'S DISCUSS WHY THESE ARE STILL THE MOST COMMONLY PERFORMED PROCEDURES

R. Edward Varner, MD

SACRAL NERVE STIMULATION (SNS): PRACTICAL TIPS AND TRICKS

Suzette E. Sutherland, MD, MS

IN OFFICE SINGLE INCISION SLINGS...SAFETY FIRST

Vincent Lucente, MD, FACOG

METHODS AND MODELS FOR PESSARY FITTING AND MANAGEMENT

Padma Kandadai, MD, MPH

PERINEAL TEARS, EPISIOTOMY, AND POSTPARTUM SEXUAL FUNCTION

Kathe Wallace, PT, BCB-PMD

MANAGING BIRTH TRAUMA: THE CASE FOR A PERINEAL CLINIC

Christina Lewicky-Gaupp, MD

THREATS AND PROMISES OF ELECTRONIC HEALTH RECORDS: HOW TO MAXIMIZE BENEFITS AND MINIMIZE RISKS

Abraham (Nick) Morse, MD, MBA

THE INS AND OUTS OF RVU'S

Cedric K. Olivera, MD, MS, FACOG, FACS

WHAT DO WE DO WHEN A SURGERY FAILS? PATIENT AND SURGEON PERSPECTIVES

Paul Tulikangas, MD

INTEGRATIVE MEDICINE IN FPMRS: THE BASICS

Karolynn Echols, MD, FACOG

DECONSTRUCTING SKILLS AND PROVIDING FEEDBACK: THE CONSCIOUS COMPETENCE MODEL

Robert F. Flora, MD, MBA, MPH

BEEF TONGUE MODEL - A PRACTICAL ALTERNATIVE FOR TEACHING THE REPAIR OF OBSTETRIC ANAL SPHINCTER LACERATION

Elisa Trowbridge, MD



SIU 2016 BUENOS AIRES *Argentina*

36th Congress of the
Société Internationale d'Urologie

Hilton Buenos Aires

October 20-23, 2016

Featuring the Joint SIU-ICUD Consultation
on Urologic Management of the Spinal
Cord Injured Patient

Why You Should Attend

- SIU is a close-knit community of international urologists, all dedicated to improving urological care around the world by sharing relevant and high-quality urological education.
- Buenos Aires is known as the "Paris of South America": it is a cosmopolitan metropolis with a truly unique Latin flavor and a style like no other.
- The condensed format of SIU Congresses gives you a one-of-a-kind opportunity for more high-quality interactions with leaders in urology.

Abstract Submission Deadline:

April 1, 2016



www.siu-urology.org



#siu16

INDUSTRY SUPPORTED EDUCATION SESSIONS

Industry Supported Education Sessions are educational sessions for Female Pelvic Medicine and Reconstructive Surgeons and are organized and delivered by industry professionals. Attendees should note that industry supported education sessions are not available for CME credit.

WEDNESDAY, OCTOBER 14

12:00 p.m. – 1:00 p.m.

Diagnosis and Management of Overactive Bladder

Ballroom 6C

Supported by Astellas Pharma US, Inc.

Faculty: Peter K. Sand, MD, Urogynecologist, Northshore University Health System

This program will provide an overview of the role of the autonomic nervous system in the regulation of bladder function, describe the symptomatology of OAB, identify available treatment options for OAB, and describe the mechanism of action and key clinical data for the treatment option(s) discussed.

12:00 p.m. – 1:00 p.m.

Evidence-based Innovation in the Surgical Management of SUI

Ballroom 6A

Supported by Coloplast

Faculty: Vincent Lucente, MD; Ty Erickson, MD; Andrea Pezzella

The Altis® Single Incision Sling System is an advancement in the treatment of SUI. The Altis low elasticity sling combined with the helical type introducer allows for predictable sling placement, while the adjustability of Altis allows for a precise fit for your patients. Altis has evolved beyond the 'mini' sling debut to provide a high safety and efficacy profile and patient quality of life.

THURSDAY, OCTOBER 15

6:45 a.m. – 7:45a.m.

Moving Patients Along the Overactive Bladder Treatment Paradigm

Room 608-609

Supported by Allergan

Faculty: Vincent Lucente, MD, MBA Institute for Female Pelvic Medicine, Allentown, Pennsylvania; Jonathan Gleason, MD Carillion Clinic, Roanoke, Virginia ; Tom Powell National Director, Urology Practice Consultants, Allergan Urology

12:30 p.m. – 1:30 p.m.

Regeneration and Reinforcement: Two Goals of the Xenform™ Soft Tissue Repair Matrix Biologic Graft

Room 606-607

Supported by Boston Scientific

Faculty: Dr. Peter Finamore, North Shore LIJ Medical System, Hauppauge, New York; Kevin Cornwell, Senior Scientist, Integra™ Life Sciences (manufacturer of Xenform) Boston, Massachusetts

This program will provide an understanding of how the host response differs depending on the type of biologic grafts used in pelvic organ prolapse procedures, with specific emphasis on the Xenform Soft Tissue Repair Matrix. The presentation will also include surgical technique tips for identifying the key anatomical structures, as well as recommendations for suture and biologic graft management.

CAUTION: Federal Law (USA) restricts this device to sale by or on the order of a physician trained in use of surgical mesh for repair of pelvic organ prolapse.

12:30 p.m. – 1:30 p.m.

Neuromodulation – Putting Data into Practice

Room 608-609

Supported by Medtronic

Faculty: Karen Noblett, MD, Chair, Department of OB/GYN, University of California; Peter Rosenblatt, MD, Director of Urogynecology, Mount Auburn Hospital

Sacral Neuromodulation is an established therapy for the treatment of OAB, non-obstructive urinary retention and chronic fecal incontinence. This program will present the safety, efficacy, and durability of Sacral Neuromodulation and discuss the purpose of implementing a care pathway for treating patients who suffer from these conditions.

FRIDAY, OCTOBER 16

6:45 a.m. – 7:45 a.m.

A Novel Nonsurgical, OTC Treatment Option for Stress Urinary Incontinence (SUI)

Room 608 -609

Supported by Kimberly-Clark

Faculty: Harvey A. Winkler, MD, Co-Chief of Urogynecology Female Pelvic Medicine & Reconstructive Surgery, North Shore - LIJ Health System

While SUI affects about one in three women, the non-surgical treatment options available may not be effective or well suited for everyone, leaving many women to sacrifice quality of life. Led by Dr. Harvey Winkler, this program will introduce a novel, over-the-counter treatment option for SUI, provide an overview of the clinical data behind it, and wrap up with a physician panel discussion.

1:00 – 2:00 p.m.

3½ Years Post–July 2011 FDA Public Health Notice on Vaginal Mesh: What to Do Now for Recurrent and Grades 3–4 POP

Room 608–609

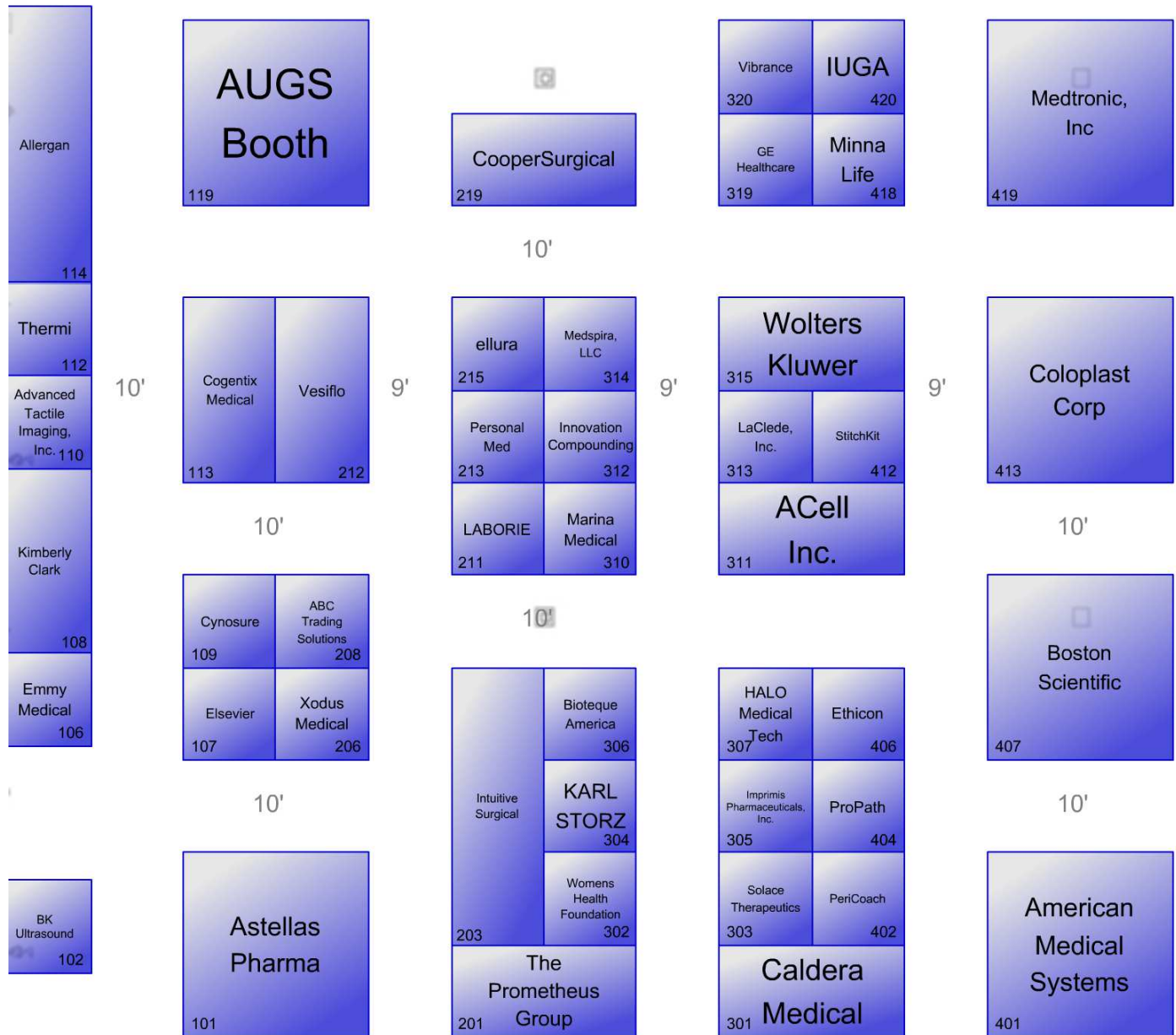
Supported by AMS

Faculty: Andrew Cassidenti, MD, Professor of OB/GYN, Keck/USC School of Medicine; Stephanie Molden, MD, Medical Director and President, Female Pelvic Health Center & Surgicare Associates Ambulatory Surgery Center

Join us for a symposium on pelvic organ prolapse with speakers Andrew Cassidenti, MD and Stephanie Molden, MD. Hear what the experts have to say about sacrocolpopexy vs. transvaginal mesh, discussing mesh technology with patients, and recent published data on the effectiveness of MiniArc™ Slings and the Elevate™ Prolapse Repair System.

The symposium is included and open to all conference attendees. No preregistration required.

EXHIBIT HALL FLOOR PLAN



EXHIBITOR LISTING

Company	Booth Number	Company	Booth Number
ABC Trading Solutions.	208	Intuitive Surgical.	203
ACell, Inc.	311	IUGA	420
Advanced Tactile Imaging, LLC	110	KARL STORZ Endoscopy-America, Inc.	304
Allergan	114	Kimberly-Clark	108
American Medical Systems.	401	LABORIE	211
Astellas Pharma US, Inc.	101	LaClede, Inc.	313
American Urogynecologic Society	119	Marina Medical Instruments	310
Bioteque America, Inc.	306	Medspira, LLC.	314
BK Ultrasound.	102	Medtronic, Inc.	419
Boston Scientific.	407	Minna Life	418
Caldera Medical	301	PeriCoach	402
Cogentix Medical	113	Personal Medical Corp	213
Coloplast	413	PFD Research Foundation	119
CooperSurgical	219	ProPath.	404
Cynosure	109	Solace Therapeutics	303
ellura	215	StitchKit	412
Elsevier (Saunders-Mosby)	107	The Prometheus Group	201
Emmy Medical	106	Thermi	112
Ethicon Women's Health and Urology	406	Vesiflo.	212
Fellows' Lounge	121	Vibrance Pelvic Trainer	320
GE Healthcare.	319	Wolters Kluwer Health/LWW	315
HALO Medical Technologies	307	Women's Health Foundation	302
Imprimis Pharmaceuticals, Inc.	305	Xodus Medical, Inc.	206
Innovation Compounding	312		

EXHIBITOR DESCRIPTIONS

ACELL, INC.

Booth 311

6640 Eli Whitney Drive
Columbia, Maryland, 21046
410.953.8547
www.acell.com

MatriStem® Pelvic Floor Matrix products are biologically-derived devices comprised of Porcine Urinary Bladder Matrix (UBM), a patented, proprietary technology of ACell, Inc. The MatriStem Pelvic Floor Matrix maintains an intact epithelial basement membrane, and facilitates the body's ability to form site-specific tissue at the site of the pelvic floor defect. The product will resorb over time, leaving behind constructively remodeled tissue to continue supporting the patient's pelvic anatomy.

ADVANCED TACTILE IMAGING, INC.

Booth 110

1459 Lower Ferry Road
Trenton, New Jersey 08540
609.333.2127
www.tactile-imaging.com

Advanced Tactile Imaging, Inc. is a developer and supplier of innovative medical devices. The Vaginal Tactile Imager is intended for mapping of pressures within the vagina to aid in diagnosis and evaluation of vaginal and pelvic floor conditions. It enables tissue elasticity assessment as well as functional imaging of the pelvic floor muscles during voluntary and involuntary contractions, relaxation and Valsalva maneuver to provide insight into POP and/or SUI development.

ALLERGAN

Booth 114

Morris Corporate Center III
400 Interpace Parkway
Parsippany, NJ 07054
1.862.261.7000
www.allergan.com

On March 17, 2015, Actavis completed the acquisition of Allergan, creating a unique, global pharmaceutical company among the leaders in Growth Pharma. The combined Company is focused on developing, manufacturing and commercializing innovative pharmaceuticals, high-quality generic and over-the-counter medicines and biologic products for patients around the world.

AMERICAN MEDICAL SYSTEMS

Booth 401

13200 Pioneer Trail, Suite 200
Eden Prairie, Minnesota 55427
952.930.6304
pelvichealthsource.com

American Medical Systems (AMS) is a supplier of medical devices and procedures to treat incontinence, pelvic organ prolapse and other pelvic disorders in women. AMS continues to develop new therapies to restore bodily functions enabling people to regain control of their lives. These therapies provide new options for patients, providers and payers, and are often inspired by the urologists, gynecologists and urogynecologists who choose AMS as their solutions partner. WE ARE Women's Health.

ASTELLAS PHARMA US, INC.

Booth 101

1 Astellas Way
Northbrook, Illinois 60062
800.888.7704
www.astellas.us

Astellas Pharma US, Inc., a U.S. affiliate of Tokyo-based Astellas Pharma Inc., is a pharmaceutical company dedicated to changing tomorrow by improving health around the world through innovative and reliable pharmaceutical products. In the US, Astellas focuses on the following therapeutic areas – Cardiology, Infectious Disease, Oncology, Transplant, and Urology.

AMERICAN UROGYNECOLOGIC SOCIETY

Booth 119

2025 M Street NW, Suite 800
Washington, DC 20036
202.367.1167
www.augs.org

The American Urogynecologic Society (AUGS), founded in 1979, is the premier society dedicated to research and education in urogynecology, and the detection, prevention, and treatment of female pelvic floor disorders. As the leader in Female Pelvic Medicine and Reconstructive Surgery, AUGS promotes the highest quality patient care through excellence in education, research and advocacy. Visit AUGS in Booth 119 for information on membership, the PFD Registry, and patient resources.

BIOTEQUE AMERICA, INC.

Booth 306

2051 Junction Avenue, Suite 128
San Jose, California
800.889.9008
www.bioteque.com

Bioteque markets a full line of vaginal pessaries and other products to manage and assist pelvic floor disorders. Pessary fitting kits are available for most types of pessaries.

BK ULTRASOUND**Booth 102**

8 Centennial Drive
Peabody, Massachusetts 01960
724.586.2799
www.bkultrasound.com

Ultrasound is a minimally invasive and efficient way to examine the pelvic floor region. With premium image quality, our bk3000 and Flex Focus systems let you examine the musculature and ligaments of the pelvic floor in real-time. Conduct dynamic testing, diagnose, discuss treatment, and schedule surgery all in one visit.

BOSTON SCIENTIFIC**Booth 407**

300 Boston Scientific Way
Marlborough, Massachusetts 01752
508.683.4312
www.bostonscientific.com

Boston Scientific is Always there for you, your physicians and your patients. We are anchored in our guiding principle to provide innovative products that are supported with clinical data and offer robust professional programs to advance the quality of care. Visit our exhibit to learn more about our products, programs and commitment to support evidence-based medicine.

CALDERA MEDICAL**Booth 301**

5071 Clareton Drive
Agoura Hills, California 91301
818.483.7614
www.calderamedical.com

Caldera Medical is a women's health medical device company which focuses on improving the quality of life for women. Caldera Medical develops, manufactures and markets differentiated surgical implants for the treatment of Stress Urinary Incontinence (Desara® Sling System) and Pelvic Organ Prolapse (Vertessa® Lite).

COGENTIX MEDICAL**Booth 113**

5420 Feltl Road
Minnetonka, Minnesota 55343
952.426.6140
www.cogentixmedical.com

Cogentix Medical products include Urgent® PC, a low-risk, office-based OAB treatment that provides clinically significant and durable results; EndoSheath® Systems that combine state-of-the-art endoscopic technology with a sterile, disposable microbial barrier; and Macroplastique® bulking agent for adult female SUI. Cogentix was formed through a merger of Uroplasty and Vision-Sciences.

COLOPLAST**Booth 413**

1601 West River Road
Minneapolis, Minnesota 55411
612.337.7955
www.us.coloplast.com

Making life easier for people with intimate healthcare needs, our SUI portfolio features the new Meridian® VPS, Altis® single incision sling system, Aris®, Supris™ and Durasphere® EXP. Treatment options for pelvic organ prolapse include: Restorelle Smartmesh®, the Digitex® suture delivery system, Axis™ cadaveric dermis and Suspend® cadaveric fascia lata.

COOPERSURGICAL**Booth 219**

95 Corporate Drive
Trumbull, Connecticut 06611
800.243.2974
www.coopersurgical.com

CooperSurgical is a leading provider of innovative medical devices and procedure oriented solutions that advance the standard of care for women. Our highly reliable and clinically relevant products and services facilitate the delivery of enhanced outcomes for your patients regardless of the clinical setting. Come visit us at 219 to interact

with our industry leading solutions and experience why CooperSurgical is at the forefront of women's health care.

CYNOSURE**Booth 109**

5 Carlisle Road
Westford, Massachusetts 01886
781.993.2486
www.cynosure.com

MonaLisa Touch®, distributed by Cynosure, is an innovative laser therapy that delivers fractional CO2 laser energy to the vaginal wall tissue for women experiencing changes to their vaginal health. The treatment is delivered via a vaginal probe during three 5-minute, in-office treatments, which require no anesthesia and are virtually painless.

eLLURA**Booth 215**

4200 Northside Parkway NW Building 12
Atlanta, Georgia 30327
404.394.6005
www.myellura.com

ellura is changing the way UTIs are managed. ellura is the only non-antibiotic alternative for UTI prevention that has been proven in published clinical trials. Come by our booth to learn more about our mission to reduce dependency on antibiotics for UTI management.

ELSEVIER (SAUNDERS-MOSBY)**Booth 107**

1600 John F. Kennedy Boulevard, Suite 1800
Philadelphia, Pennsylvania 19103
215.239.3722
www.elsevierhealth.com

ELSEVIER is a leading publisher of health science publications, advancing medicine by delivering superior reference information and decision support tools to doctors, nurses, health practitioners and students. With an extensive media spectrum — print, online and handheld, we are able to supply the information you need in the most convenient format.

EXHIBITOR DESCRIPTIONS

EMMY MEDICAL

Booth 106

18 Hillside Drive
Holliston, Massachusetts 01746
775.800.7300
www.cynosure.com

Emmy Medical has developed CystoSure® - a unique 4-way Foley catheter allowing cystoscopy in under 1 minute with no learning curve and improved patient safety - providing an incredible user experience in the OR, at the Office and from the Bedside. CystoSure® makes cystoscopy safe, simple, and standardized for all clinicians.

ETHICON WOMEN'S HEALTH AND UROLOGY

Booth 406

4545 Creek Road
Cincinnati, Ohio 45242
513.337.1588
www.ethicon.com

Ethicon US LLC brings to market a broad range of innovative surgical products, solutions and technologies used to treat some of today's most prevalent medical issues, such as: colorectal and thoracic conditions, spine and cardiovascular conditions, cancer, obesity and other conditions requiring general surgery. Learn more at www.ethicon.com.

FELLOWS' LOUNGE

Booth 121

Returning in 2015, AUGS is featuring a lounge exclusively for Fellows in the Exhibit Hall. Visit the Fellows' Lounge in booth 121 and take advantage of this opportunity to network with your peers and make connections in the field.

GE HEALTHCARE

Booth 319

9900 Innovation Drive
Wauwatosa, Wisconsin 53226
414.305.2182
www.gehealthcare.com

GE Healthcare provides transformational medical technologies that will shape a new age of patient care. GE Healthcare offers a broad range of services to improve productivity in healthcare and enable healthcare providers to better diagnose, treat and manage patients. For more information about GE Healthcare, visit www.gehealthcare.com.

HALO MEDICAL TECHNOLOGIES

Booth 307

1805 Foulk Road, Suite G
Wilmington, Delaware 19810
302.475.2300
www.halomedtech.com

HALO offers affordable, high resolution 2D/3D ultrasound designed for pelvic floor practitioners. Image anal sphincter defects, surgical mesh implants, and pelvic floor conditions prior to surgical intervention - right in your own office. Use visual biofeedback for pelvic muscle exercise training. Fully interchangeable probes for endoanal, transvaginal, and transperineal exams.

IMPRIMIS PHARMACEUTICALS, INC.

Booth 305

12264 El Camino Real, Suite 350
San Diego, California 92130
858.704.4045
www.imprimispharma.com

San Diego-based Imprimis Pharmaceuticals, Inc. (NASDAQ: IMMY) is a pharmaceutical company dedicated to delivering high quality and innovative medicines to physicians and patients at accessible process. Imprimis' business is focused on proprietary urology drug formulations.

Imprimis recently launched its urology business, which includes a patented formulation to address patients suffering from interstitial cystitis. For more information about Imprimis, please visit the company's corporate website at www.ImprimisPharma.com; urology business websites at www.DefeatIC.com.

INNOVATION COMPOUNDING

Booth 312

6095 Pine Mountain Road NW Suite. 108
Kennesaw, Georgia 30152
770.421.1399
www.innovationcompounding.com

Innovation Compounding offers a complete portfolio of compounded medications for Pelvic Pain and Female Sexual Dysfunction. Our compounds are specifically formulated for vulvo/vaginal application and are hypo-allergenic, dye free, alcohol free, and pH adjusted.

INTUITIVE SURGICAL

Booth 203

1020 Kifer Road
Sunnyvale, California 94086
408.523.2100
www.intuitivesurgical.com

Intuitive Surgical is the global leader in minimally invasive, robotic-assisted surgery. Its da Vinci® System - with a 3D-HD vision system and EndoWrist® instrumentation - enables surgeons to offer a minimally invasive approach for a range of complex procedures. With more than 2,500 Systems installed in hospitals around the world, the da Vinci System is enabling surgeons to redefine the standard-of-care in a range of specialties: urology, gynecology, head and neck, general surgery, cardiac and thoracic surgery.

INTERNATIONAL UROGYNECOLOGICAL ASSOCIATION (IUGA)

Booth 420

2030 M Street NW, Suite 701
Washington, DC 20036
1.202.733.3234
www.iuga.org

IUGA is the international leader in the urogynecological field and is dedicated to global advancement of urogynecological knowledge and patient care through education and the promotion of research. IUGA publishes the International Urogynecology Journal (IUGJ), conducts education programs worldwide, advocates regarding urogynecology, develops consensus terminology and produces patient education materials.

KARL STORZ ENDOSCOPY- AMERICA, INC.

Booth 304

2151 East Grand Avenue
El Segundo, California 90245
800.421.0837
www.karlstorz.com

KARL STORZ Endoscopy-America has remained a leading manufacturer for over 70 years of reusable endoscopy products and related technologies that emphasize patient care. Combining our legendary optical technologies with precision instrumentation, the company offers an array of diagnostic and operative solutions for a full range of applications, including urogynecologic procedures.

KIMBERLY-CLARK

BOOTH 108

2300 Country Road II
Neenah, Wisconsin 54956
416-390-2344
www.kimberly-clark.com

Kimberly-Clark is a global consumer goods company with leading brands sold in more than 175 countries. At Kimberly-Clark,

developing and acquiring new technologies and leveraging strategic partnerships has enabled the creation of innovative product and design solutions across our personal care, consumer tissue, healthcare and business-to-business segments.

LABORIE

Booth 211

400 Avenue D, Suite 10
Williston, Vermont 05495
802.923.1557
www.laborie.com

LABORIE, the global leader in pelvic health diagnostics, brings freedom and dignity to patients suffering from pelvic floor disorders through innovation in diagnostic and treatment options. We help healthcare professionals treat disorders from pelvic floor rehabilitation to Urodynamics testing. LABORIE's product line includes solutions for Urodynamics, Anorectal Manometry, Uroflowmetry, Clinical Informatics, Ultrasound and Cystoscopy.

LACLEDE, INC.

Booth 313

2103 East University Drive
Rancho Dominguez, California 90220
310.605.4280
www.luvencare.com

LaCled Inc. is the manufacturer of Luvena Vaginal Health products specializing in vaginal dryness. Luvena products contain natural enzymes and are free from harmful ingredients such as parabens, hormones and chlorhexidine. The product line includes Luvena Vaginal moisturizer, Luvena wipe, Luvena enhanced moisturizer and Luvena feminine wash.

MARINA MEDICAL INSTRUMENTS

Booth 310

955 Shotgun Road
Hollywood, Florida 33326
800.697.1119
www.marinamedical.com

Marina Medical Instruments designs, manufactures, and distributes medical devices for the plastic, aesthetic, reconstructive, and regenerative medicine fields of surgery. Our innovative product line consists of aesthetic surgery instrumentation and our premium lipoplasty products, which include Koume cannulas and lipoplasty accessories. Se habla español.

MEDSPIRA, LLC

Booth 314

2718 Summer Street NE
Minneapolis, Minnesota 55413
800.345.4502
www.medspira.com

Medspira partners with leading medical institutions to develop and market cost-effective diagnosis and treatment solutions for a variety of medical conditions. Medspira's mcompass is a portable anorectal manometry system utilized by private offices and hospitals alike. We are happy to be able to include ultrasound and our new FDA approved biofeedback pelvic floor retraining module on the same hardware platform. The mcompass is a great solution to help in the diagnosis and now treatment of patients with fecal incontinence and chronic constipation.

EXHIBITOR DESCRIPTIONS

MEDTRONIC, INC.

Booth 419

710 Medtronic Parkway
Minneapolis, Minnesota 55432
763.505.8127
www.medtronic.com

Through innovation and collaboration, Medtronic improves the lives and health of millions of people each year. Products include the InterStim® System, providing Sacral Neuromodulation for Bladder Control and Bowel Control. Learn more about our technology, services and solutions at Medtronic.com.

MINNA LIFE

Booth 418

2325 3rd Street, Suite 204
San Francisco, California 94107
415.202.5300
www.minnalife.com

Minna Life creates smart consumer products to help people quantify, manage and improve their sexual health.

PERICOACH

Booth 402

GPO 670
Brisbane QLD, Australia, 4001
720.403.3344
www.pericoach.com

The PeriCoach™ System is a personalized device, web portal and smart phone app for pelvic floor muscle training. Designed for home use, it is the first system that includes a device, an app providing instruction and real-time feedback and a connection that enables patient management by clinicians remotely. PeriCoach is available in Australia and Europe. PeriCoach is FDA cleared in the US, available by prescription.

PERSONAL MEDICAL CORP

Booth 213

8672 154th Avenue Northeast
Redmond, Washington 98052
425.242.6373
www.personalmed.com

Personal Med provides EvaCare® pessaries for management of prolapse and/or incontinence, as well as a variety of devices for conservative treatments of UI, including biofeedback instruments and sensors, stimulators and vaginal weights.

PFD RESEARCH FOUNDATION

Booth 119

2025 M Street NW, Suite 800
Washington, DC 20036
202.367.1167
www.pfdresearch.org

The PFD Research Foundation, the official research foundation of AUGS, serves the medical profession by supporting promising, innovative research regarding the causes, prevention, cure and treatment of pelvic floor disorders. Visit the PFD Research Foundation in Booth 119 to learn more, donate, and place a bid in the Silent Auction to win the VIP Experience at the AUGSome Rockaraoke Event at the EMP Museum.

PROPATH

Booth 404

1355 River Bend Drive
Dallas, Texas
214.638.2000
www.propath.com

ProPath is a team of pathologists recruited from top-tier medical centers and academic institutions around the country. ProPath has surrounded its physicians with an unsurpassed, internationally-recognized laboratory utilizing a proprietary tracking system for every patient specimen. The ProPath teams of board-certified and subspecialty-trained pathologists are the experts you want rendering your diagnosis.

SOLACE THERAPEUTICS

Booth 303

135 Newbury Street
Framingham, Massachusetts 01701
774.291.1498
www.solacetx.com

Solace Therapeutics is an emerging women's health company focused on a revolutionary non-surgical office based treatment for unexpected bladder leaks, the primary symptom of female Stress Urinary Incontinence (SUI). SUI, the most prevalent form of incontinence among women, affects an estimated 1 in 3 adult women. Solace is dedicated to improving the quality of life for women whose daily life is disrupted by their incontinence.

STITCHKIT

Booth 412

49 Walnut Street
Milton, Massachusetts, 02186
617.910.7112
www.stitchkit.com

StitchKit® is a sterile, single-use canister that contains six strands of ePTFE suture with TH-26 needles (i.e. similar to SH needles). It is designed to facilitate suture/needle management during ROBOTIC SACROCOLPOPEXY. It is indicated for use in all types of soft tissue approximation, including gynecologic, cardiovascular and general surgery. The six sutures are stored in a suture holding compartment within the canister to allow for fast and easy removal of each individual strand.

THE PROMETHEUS GROUP**Booth 201**

1 Washington Street, Suite 303
Dover, New Hampshire 03820
603.749.0733
www.theprogrp.com

Look to The Prometheus Group® to provide the most comprehensive and advanced platforms for pelvic muscle rehabilitation, urodynamics, uroflowmetry with and without EMG, anorectal manometry, abdominal ultrasound for post void residual and kidney imaging, 360° endorectal ultrasound for fecal incontinence, disposable electronic catheters for urodynamics, and supporting consumables and accessories.

THERMI**Booth 112**

8304 Esters Blvd. Suite 890
Irving, Texas 75063
866.981.5017
www.thermi.com

Thermi is a leading manufacturer of Temperature Controlled Radio Frequency technology. The company's flagship product is ThermiRF, a platform technology which uses temperature as an endpoint for various minimally and non-invasive aesthetic applications.

VESIFLO**Booth 212**

8672 154th Avenue Northeast
Redmond, Washington 98052
425.242.6365
www.vesiflo.com

Vesiflo, Inc. is a manufacturer of proprietary medical devices whose mission is to reinvent urinary bladder drainage. The Company's first product, the inFlow™ device, is an active urinary prosthesis that provides a unique alternative to passive urinary catheters for women with underactive bladder.

VIBRANCE PELVIC TRAINER**Booth 320**

No 21, Jalan 4/62A, Bandar Menjalara,
Kepong 52200 Kuala Lumpur, Malaysia
855.984.1600

The Vibrance Pelvic Trainer is the clinically proven, US FDA Cleared, Medical Design Excellence Award winning solution for pelvic muscle training. Patented biofeedback and resistive training features make Vibrance the best choice for women and clinicians choosing a pelvic training device. Vibrance -Empowering Women from Within. Literally.

**WOLTERS KLUWER HEALTH/
LWW****Booth 315**

2001 Market Street
Philadelphia, Pennsylvania 19103
215.521.8423
www.lww.com

Wolters Kluwer is a leading publisher of medical, health, and science publications. We offer an extensive selection of medical books, journals, and electronic media for doctors, nurses, specialized clinicians and students. Please visit booth # 315 to browse our comprehensive product line.

**WOMEN'S HEALTH
FOUNDATION****Booth 302**

632 West Deming Place
Chicago, Illinois 60614
312.415.8246
www.womenshealthfoundation.org

Women's Health Foundation's (WHF) mission is to improve the pelvic health of all women and girls. WHF does this by: driving cutting-edge research initiatives; serving as a national resource on pelvic wellness issues; developing and offering education and wellness programs; and fostering conversation and creating communities for women.

XODUS MEDICAL, INC.**Booth 206**

702 Prominence Drive
New Kensington, Pennsylvania 15068
724.337.5500
www.xodusmedical.com

The latest innovation in Trendelenburg positioning is the NEW Pink Pad XL, featuring an extended length and a perineal cutout. Like the original patented Pink Pad, the next generation XL prevents patient sliding, while protecting against nerve damage, tissue breakdown and pressure ulcers. For added safety, NEW One-Step Arm Protectors safeguard arms and fingers from nerve and tissue injury, while the NEW One-Step Face Protector fends off injury to the face, eyes and head.

AWARD RECIPIENTS

JACK ROBERTSON LIFETIME ACHIEVEMENT AWARD



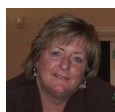
Dee E. Fenner, MD

*Presented Thursday, October 15
9:30 a.m. – 10:30 a.m., Hall 4A*

AUGS' most prestigious award is presented periodically to an individual who has had a lifetime of outstanding achievements in the field of Female Pelvic Medicine and Reconstructive Surgery and has served as a role model through service, basic or clinical research, and teaching.

The AUGS Board of Directors wishes to congratulate this year's recipient, Dee Fenner, MD. Dr. Fenner is recognized for her instrumental role in the establishment of Female Pelvic Medicine and Reconstructive Surgery as a certified subspecialty, as a member of the ABOG/AUA Committee on FPMRS, as well as her career in both education and research. She has served in leadership roles for many organizations, including AUGS President, where she oversaw the acquisition of the FPMRS Journal.

ROBIN HAFF RESEARCH AWARD



Judy Gruss

*Presented Thursday, October 15
4:15 p.m. – 5:00 p.m., Hall 4A*

The Robin Haff Research Award is endowed through the generous support of American Medical Systems.

This award is presented annually to an individual in recognition of outstanding and sustained contribution to female pelvic floor disorders research. The Robin Haff Research Award recognizes the important role that clinical research nurses and research coordinators play in the clinical research process. Without dedicated and committed research staff, high quality research would not be possible.

The AUGS Board of Directors wishes to congratulate this year's recipient, Judy Gruss, for her extraordinary and sustained contributions to our field in research, education, and clinical care over the past 23 years. Ms. Gruss is recognized as a key contributor to the growth and success of the University of Pittsburgh Women's Bladder and Pelvic Health Research program.

PFD RESEARCH FOUNDATION DONOR OF THE YEAR AWARD



Andrew Cassidenti, MD

*Presented Thursday, October 15
4:15 p.m. – 5:00 p.m., Hall 4A*

The PFD Research Foundation presents the Donor of the Year Award to an individual in recognition of commitment to the Foundation's mission of transforming the lives of women through the support of innovative and effective research that advances the prevention, treatment, and cure of female pelvic floor disorders.

The PFD Research Foundation Board of Directors wishes to congratulate this year's recipient, Andrew Cassidenti, MD, and recognize him for his consistent and generous donations to the Foundation.

RESIDENT SCHOLAR AWARDS

*Presented Thursday, October 15
4:15 p.m. – 5:00 p.m., Hall 4A*

This program funds third-year residents who have demonstrated an interest in Female Pelvic Medicine and Reconstructive Surgery to attend the AUGS Annual Scientific Meeting and experience the current research initiatives going on within the field. Each scholar receives a \$1,500 award to cover travel, hotel accommodations, and meeting registration.



Alexander Berger, MD, MPH

Thomas Jefferson University Hospital Ob-Gyn



Jocelyn Fitzgerald, MD

Johns Hopkins University



Ann Peters, MD, MS

Magee Womens Hospital of UPMC



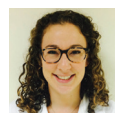
Aparna Ramesashan, MD

OBGYN University of Maryland Medical Center



Amanda Stewart, MD

University of California San Diego



Rachael Sussman, MD

MedStar/Georgetown University Hospital

2015 PFD RESEARCH FOUNDATION GRANT RECIPIENTS

FOUNDATION FELLOW RESEARCH AWARD



Annetta Madsen, MD

Women and Infants Hospital/Brown Alpert Medical School

Improving patient-centered care for pelvic floor disorders through perioperative peer support



Pedro Maldonado, MD

UT Southwestern Medical Center

Effects of ospemifene and vaginal estrogen on the vaginal wall before and after injury

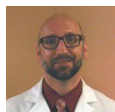
MESH/GRAFT SCIENCE IN PELVIC RECONSTRUCTIVE SURGERY



Joseph Kowalski, MD

University of Iowa

Molecular markers of angiogenesis in polypropylene mesh-related vaginal exposures



Craig Mayr, MD

UPMC Magee Womens Hospital

The tissue redox environment and oxidative macromolecular damage at sites of vaginal mesh placement in women with mesh-related complications

PFD RESEARCH FOUNDATION AND ICA IC/PBS RESEARCH GRANT

Ana Charrua Cordeiro, MD

IBMC - Instituto de Biologia Celular e Molecular

Sympathetic nervous system dysfunction is a trigger to BPS/IC symptoms development



PFD RESEARCH FOUNDATION

The Official Research Foundation of AUGS

BACKSTAGE EXPERIENCE SILENT AUCTION

Have the true backstage experience at the AUGSOME Rockaraoke Event! Winners of the silent auction, and up to four friends, will be whisked away to the VIP Lounge with a private bar and a birds-eye view of the Rockaraoke stage. Winners will also have exclusive access to the "On Stage" Exhibit for the first hour-and-a-half of the event. To enter, visit the AUGS/PFD Research Foundation Booth by Friday, October 16 at noon.

DONOR DRAWING

With every \$100 you donate at PFD Week 2015, you will be given an entry into a drawing for one of our two great prizes. The more you donate, the better your chances are to win a lifetime membership to AUGS or a PFD Week 2016 Package, complete with complimentary meeting registration, including one workshop, flight, and hotel!

Awards

The 2015 Research Grants Program was made possible through the generous support of:

Allergan Foundation
American Medical Systems
Astellas Scientific & Medical Affairs, Inc.
Boston Scientific
Interstitial Cystitis Association



PFD RESEARCH FOUNDATION

The Official Research Foundation of AUGS

Every contribution to the PFD Research Foundation builds a stronger future for Female Pelvic Medicine and Reconstructive Surgery.

Advancing Research • Developing Future Researchers
Transforming Lives • Funding Young Investigators

Corporate Sponsors

The Allergan Foundation
AMS
Astellas
Boston Scientific
Medtronic

Legacy Circle Members

Linda Brubaker, MD, MS
Andrew P. Cassidenti, MD
Vincent Lucente, MD, FACOG

Donor of the Year



Andrew P. Cassidenti,
MD

Institutional Supporters

University of Alabama
at Birmingham
Atlanta
Urogynecology
Associates
Atlantic Health
Brown University
University of
California, Irvine
University of
California, San
Diego
University of Chicago
Hospital/Northshore
Christ Hospital
Cleveland Clinic
Drexel University
College of Medicine
Duke University
Medical Center
Harbor-UCLA
Medical Center
Hartford Hospital

Indiana University
University of Iowa
Hospitals and
Clinics
Louisiana State
University
Loyola University
Medical Center
Massachusetts
General Hospital
Mayo Clinic
MedStar Washington
Hospital Center
University of Michigan
Hospital
Mount Auburn
Mt. Sinai School of
Medicine
University of New
Mexico Health
Sciences Center
University of North
Carolina

Northwestern
University
Oregon Health &
Science University
University of
Pittsburgh
Scott & White
Hospital and Clinic
University of South
Florida
Stanford University
Tulane University
School of Medicine
Walter Reed National
Military Medical
Center
Yale University School
of Medicine

The PFD Research Foundation sincerely thanks the following individuals and organizations for their generous support.

**Gifts received between July 25, 2014 – September 1, 2015.*

\$1,000 - \$4,999

Cindy Amundsen Matthew Barber Peter Bulla Andrew Cassidenti AnnaMarie Connolly Patrick Culligan	Sanjay Gandhi Roger Goldberg Douglass Hale Cheryl Iglesia Margie Kahn Mickey Karram	Kimberly Kenton Vince Lucente Catherine Matthews Timothy McKinney Robert Moore Elizabeth Mueller	Miles Murphy Deborah Myers Charles Nager Karen Noblett Marie Paraiso Holly Richter	Rebecca Rogers Peter Rosenblatt Amy E. Rosenman Ryan Stratford Sandra Valaitis Robert E. Varner	Kristene Whitmore Halina Zyczynski
----------------------------------------------------------------------------------------------------------------	----------------------------------------------------------------------------------------------------	-----------------------------------------------------------------------------------------------------------------	---------------------------------------------------------------------------------------------------	----------------------------------------------------------------------------------------------------------------	---------------------------------------

\$500 - \$999

Alfred Bent Catherine Bradley Michelle Chin Sage Claydon	Sandra Culbertson Christina Guapp Victoria Handa Rhonda Kotarinos	Felicia Lane Wilma Larsen Gretchen Lentz Emily Lukacz	J. Kyle Mathews Shawn Menefee John Miklos Nazema Siddiqui	Scott Smilen Anthony Visco Alison Weidner Jennifer Wu
-------------------------------------------------------------------	----------------------------------------------------------------------------	----------------------------------------------------------------	--------------------------------------------------------------------	----------------------------------------------------------------

\$250 - \$499

Renee Bassaly Linda Brubaker Jeffrey Clemons Sarah Collins Dee Fenner	Tanaz Ferzandi Rene Genadry Chiara Ghetti Kristie Greene W. Thomas Gregory	Anne Hardart Nicolette Horbach Lennox Hoyte Christene LaSala Jerry Lowder	Sangeeta Mahajan Mamta Mamik Karen McShane Joseph Montella Ingrid Nygaard	Begum Ozel Joy Saini Kris Strohbehn Steven Swift Paul Tulikangas
-----------------------------------------------------------------------------------	----------------------------------------------------------------------------------------	---------------------------------------------------------------------------------------	---------------------------------------------------------------------------------------	------------------------------------------------------------------------------

\$100 - \$249

Charles Ascher-Walsh Faisal Aslam Heather Barbier Giti Bensinger Lance Betson Roberta Blandon Sylvia Botros-Brey Jessica Bracken Cynthia Brincat Heidi Brown Tracy Capes Peter Castillo	Elizabeth Chase Amanda Clark Christina Dancz Mary Ann Denman Keisha Dyer Renee Edwards Mark Ellerkmann Andy Fantl Peter Finamore Michael Flynn Robert Furr Alan Garely	Elizabeth Geller Joy Greer Cara Grimes Noelani Guaderrama Oz Harmanli Katherine Hulfish Sharon Jakus-Waldman William Kobak Abner P. Korn Elizabeth Kotarinos Bela Kudish Tam Le	Jennifer Lee Una Lee Cynthia Lewis Karl Luber Spryos Marinis Margaret Mueller Gina Northington Amy O'Boyle Cedric Olivera Blake Osmundsen Brent Parnell Lisa Peacock	Stephanie Pickett Anita Pillai-Allen Samantha Pulliam Leslie Robinson Katherine Sandhu Melanie Santos Megan Schimpf Rebecca Shaffer Aparna Shah Eric Sokol Adam Steinberg Jasmine Tan-Kim	Ranee Thakar Babak Vakili Michael Vardy Stacey Wallach Renee Ward Salim Wehbe Emily Whitcomb Anne Wiskind Tajnoos Yazdany Raul Yordan-Jovet
--------------------------------------------------------------------------------------------------------------------------------------------------------------------------------------------------------------------------	---------------------------------------------------------------------------------------------------------------------------------------------------------------------------------------------------------	------------------------------------------------------------------------------------------------------------------------------------------------------------------------------------------------------------------	-------------------------------------------------------------------------------------------------------------------------------------------------------------------------------------------------------	----------------------------------------------------------------------------------------------------------------------------------------------------------------------------------------------------------------------------	------------------------------------------------------------------------------------------------------------------------------------------------------------------------

Under \$100

Rony Adam Kerrie Adams Andrew Agosta Vivian Aguilar Felix Ajayi Michael Albo Matthew Aungst Betania Batista Nina Bhatia Joan Blomquist Mollie Brooks Lauri Budnick Kent Burk Lauren Cadish Eugen Campian Gerry Campos Donald DeBrakeleer Renee Detollenare Madeline Dick-Biascoechea Keith Downing	Carolyn Drake Dominique El-Khawand Denise Elser Lee Epstein Matt Esplin Tola Fashokun Kimberly Ferrante Michael Fialkow Paul Fine Joseph Fok Anna Virginia Franco Joseph Gauta Thomas Giudice Carol Glowacki Tracey Grant Elliot B. Greenberg Bogdan Grigorescu Robert Gutman Joanne Gutt Cynthia Hall	Sarah Hamilton Robert Harris Nicole Hasala Tomoe Hirakawa Dianne Hotmer Markus Huebner Kelley Huihan Elizabeth Jarvis Marjorie Jean-Michel Peter Jeppson Lisa Johnson Debjyoti Karmakar Amie Kawasaki Linda Kiley Anna Kirby Yuko Komesu Joseph Kowalski Christina Liao Quinn Lippmann Beth Louh	Shazia Malik Padma Mallipeddi Craig Mayr Brook McFadden Jessica McKinney Carlos Medina Gerardo Melero Colleen Mellen Kate Meriwether Stephanie Molden Abraham Morse Linda Narcisi Rebecca Nelken Brian Nelson Michael Noone Jennifer Normoyle Susan Oakley Anthony O'Connell Katharine O'Dell Peter O'Hare	Osvaldo Padron Apurva Pancholy Candace Parker-Autry Dave Perry Lora Plaskon Jameca Price Leslie Rickey Emily Saks Charbel Salamon Gerrit Schipper Mitchell Schuster Jason Sean Begley Stuart Shippey Karen Simpson Andrew Sokol Katherine Stevenson Genevieve St-Gelais Michelle Takase-Sanchez Elena Tunitsky Lindsay Turner	Heleen Van Dongen Heather van Raalte Esther van Swieten Brett Vassallo Clifford Wai Miriam Waligora Kathe Wallace Richard Wasserman Emily Weber LeBrun Milena Weinstein Cecilia Wieslander Lanita Witt Patrick Woodman Sallis Yip Martino Zacche Michelle Zinnert
-------------------------------------------------------------------------------------------------------------------------------------------------------------------------------------------------------------------------------------------------------------------------------------------------------------------------------------------------------------	-----------------------------------------------------------------------------------------------------------------------------------------------------------------------------------------------------------------------------------------------------------------------------------------------------------------------------------------------------------------	-----------------------------------------------------------------------------------------------------------------------------------------------------------------------------------------------------------------------------------------------------------------------------------------------------------------------------------------------------------	---------------------------------------------------------------------------------------------------------------------------------------------------------------------------------------------------------------------------------------------------------------------------------------------------------------------------------------------------------------------	----------------------------------------------------------------------------------------------------------------------------------------------------------------------------------------------------------------------------------------------------------------------------------------------------------------------------------------------------------------------------------------	----------------------------------------------------------------------------------------------------------------------------------------------------------------------------------------------------------------------------------------------------------------------------------------------------------------

AUGS LEADERSHIP

AUGS BOARD OF DIRECTORS

President



Amy Rosenman, MD
Geffen School of Medicine at UCLA
Santa Monica, California

President-Elect



Douglass S. Hale, MD
Methodist Hospital of Indiana
Indianapolis, Indiana

Vice President



Halina M. Zyczynski, MD
University of Pittsburgh School of Medicine
Pittsburgh, Pennsylvania

Treasurer



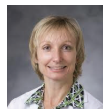
Ryan Stratford, MD, MBA
The Woman's Center for Advanced Pelvic Surgery
Mesa, Arizona

Immediate Past President



Charles W. Nager, MD
University of California, San Diego
La Jolla, California

DIRECTORS AT LARGE



Cindy L. Amundsen, MD
Duke University Medical Center
Durham, North Carolina



Sandra Culbertson, MD
University of Chicago
Chicago, Illinois



Patrick J. Culligan, MD
Atlantic Health
Morristown, New Jersey



Roger P. Goldberg, MD, MPH
NorthShore University Health System
Evanston, Illinois

PFD Research Foundation Chair



Catherine A. Matthews, MD

PFD Research Foundation Vice Chair



Sandra R. Valaitis, MD
University of Chicago Hospital
Chicago, Illinois



Shawn A. Menefee, MD
Kaiser Permanente, San Diego
San Diego, California



Adam C. Steinberg, DO, FACOG, FACS
Hartford Hospital
Hartford, Connecticut

Ex-officio Member



Michelle Zinnert, CAE
Executive Director
Washington, DC



Making a difference means taking the lead.

As leaders in Urology, we make it our priority to stay on the cutting edge of urologic research to address unmet needs in Urology. Our commitment extends beyond product development. We seek to establish meaningful collaborations and alliances throughout the Urology community.

Changing the Urology of tomorrow, today.

AUGS LEADERSHIP

PAST PRESIDENTS

Charles Nager, MD (2013–2014)
Anthony G. Visco, MD (2012–2013)
Matthew D. Barber, MD, MHS (2011–2012)
Deborah Myers, MD (2010–2011)
Rebecca Rogers, MD (2009–2010)
Dee Fenner, MD (2008–2009)
Kris Strohbehn, MD (2007–2008)
Ingrid Nygaard, MD (2006–2007)
Joseph Montella, MD (2005–2006)
Stephen Young, MD (2004–2005)
Michael Aronson, MD (2003–2004)
Linda Brubaker, MD (2002–2003)
Peggy Norton, MD (2001–2002)
W. Conrad Sweeting, MD (2000–2001)
Nicolette Horbach, MD (1999–2000)
Mickey Karram, MD (1998–1999)
Richard Bump, MD (1997–1998)
Robert Shull, MD (1996–1997)
John O. L. DeLancey, MD (1995–1996)
Alfred Bent, MD (1994–1995)
John Higgins, MD (1993–1994)
Charles deProsse (1992–1993)
J. Thomas Benson (1991–1992)
David A. Richardson (1990–1991)
Ernest I. Kohorn (1989–1990)
Henry A. Thiede (1988–1989)
Richard O. Davis, MD (1987–1988)
J. Andrew Fantl, MD (1986–1987)
Gynecologic Urology Society
R. Peter Beck, MD (1985–1986)
Donald R. Ostergard, MD (1984–1985)
Douglas J. Marchant, MD (1983–1984)
W. Glenn Hurt, MD (1982–1983)
Hugh M. Shingleton, MD (1981–1982)
C. Paul Hodgkinson, MD (1980–1981)
Jack R. Robertson, MD (1979–1980)

AUGS STAFF

Michelle Zinnert, CAE, Executive Director
Colleen Hughes, Associate Executive Director
Kate Detweiler, Registry Director
Mitra Aminrazavi, Research and Quality Improvement Coordinator
Tristan Wood, Operations Senior Coordinator
Mollie Brooks, Membership Coordinator
Alyssa Yaguda, Membership Senior Associate
Christine Davis, Development Director
Apryl Alexander-Savino, Event Services Manager
Cristina Adames, Event Services Associate
Amanda Darvill, Marketing and Communications Director
Amanda O'Kane, Marketing and Communications Manager
Jayne Corso, Marketing and Communications Senior Associate
Lauren Lawson, Education Manager
William Reed, Education Senior Coordinator
Jeffrey Reeves, Staff Accountant

Visit us
at Booth
#401



is now

ASTORA
WOMEN'S HEALTH

Our name has changed.

Our unwavering commitment to Women's Health has not.

Women's pelvic health is—and always will be—our world. Our name has changed, but everything you've come to expect from us has not. From outstanding SUI and POP products to exceptional customer service, we remain committed to advancing women's pelvic health and restoring patient quality of life. We look forward to seeing you at booth #401.



Altis®. Now even less is more.

Proven product legacy

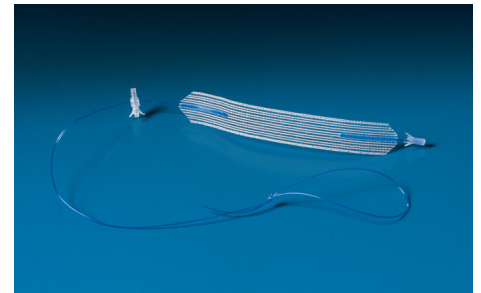
Same mesh material as used in the Aris® and Supris® sling systems

Predictable placement

Helical type introducer allows for ease of passage and placement

Precise adjustability

Anchoring allows for bi-directional tensioning



www.AltisSIS.com

The results are in. Visit booth 413 to review the IDE clinical data and receive a product demonstration.

Indications:

The Altis Single Incision, Aris Transobturator and Supris Retropubic Sling Systems are indicated for the treatment of female stress urinary incontinence (SUI) resulting from urethral hypermobility and/or intrinsic sphincter deficiency (ISD).

Contraindications:

Altis, Aris or Supris slings should not be used in pregnant women, or in women planning future pregnancies or any patient with potential for future growth. Altis, Aris or Supris slings should not be used in those who are taking anticoagulant therapy, who have an abnormal urethra, who have an intra-operative urethral injury, are immunocompromised, who have a sensitivity to polypropylene, have a pre-existing local or systemic infection, who are immunocompromised, or women that have a known or suspected pathology which would compromise implant or implant placement.

Warnings and Precautions:

It is the responsibility of the surgeon to advise the prospective patients or their representatives, prior to surgery, of the possible warnings and precautions associated with the use of this product and the associated surgical risks. Altis, Aris and Supris Sling Systems should only be used by surgeons familiar with the surgical procedures and techniques involving transvaginal placement of non-absorbable meshes and who have adequate education and experience in the treatment of female SUI. Based on physician experience and education, a thorough assessment of each patient should be made to determine the suitability of a synthetic mesh procedure. The patient should be counseled that alternative non-mesh incontinence surgeries may be appropriate, and the reason for choosing a mesh procedure should be explained. Physician should obtain patient consent prior to surgery and ensure that the patient has an understanding of the postoperative risks and potential complications of transvaginal mesh surgery. Patient counseling should include a discussion that the mesh to be implanted is a permanent implant, and that some complications associated with the implanted mesh may require additional surgery; repeat surgery may not resolve these complications. Serious adverse tissue responses or infection may require removal of mesh.

Adverse Effects:

Potential adverse events are those associated with surgery using implantable synthetic mesh materials. As with all foreign bodies, the Altis, Aris, Supris sling is likely to exacerbate any existing infection. Local irritation at the wound site and/or a foreign body response may occur. The following complications are known to occur with synthetic mesh implantation: mesh erosion (e.g., vaginal, bladder), mesh extrusion, mesh exposure, infection, pain (acute or chronic), and bladder, bowel, urethra, vagina, vessel, and/or nerve perforation/injury. There is also the risk of complete failure of the procedure resulting in continued incontinence due to incomplete support or overactive bladder. The occurrence of these events may require partial or complete removal of the sling. Patients should be monitored regularly after the device has been implanted for immediate treatment of any adverse reaction.

See the device instructions for use for detailed information regarding the implant procedure, warnings/precautions, adverse reactions, prior to using this product.

For further information, call Coloplast Corp at 1-800-258-3476 and/or consult the company website at www.coloplast.us.

CAUTION: Federal (USA) law restricts this device to sale by, or on, the order of a physician.